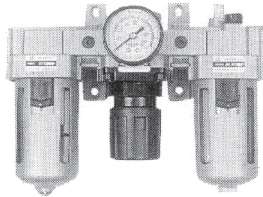
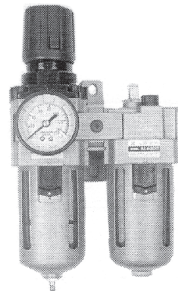


MODULAR TYPE AIR COMBINATION SET

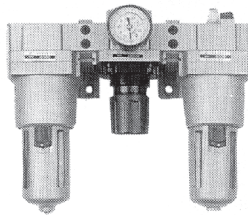
**YAC3000
YAC4000**



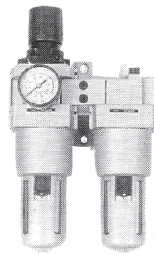
**YAC3010
YAC4010**



YAC5000

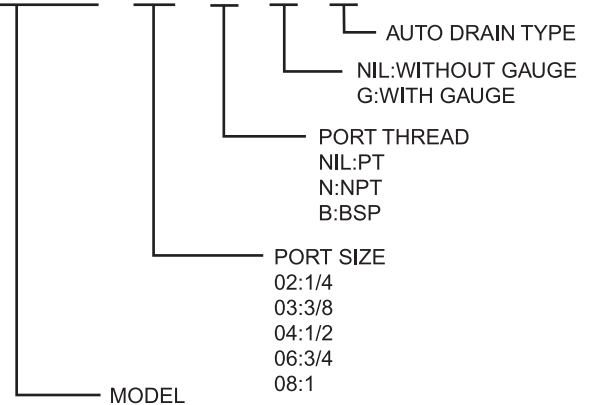


YAC5010

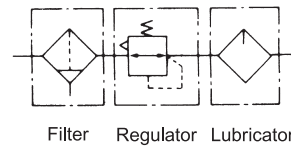


HOW TO ORDER

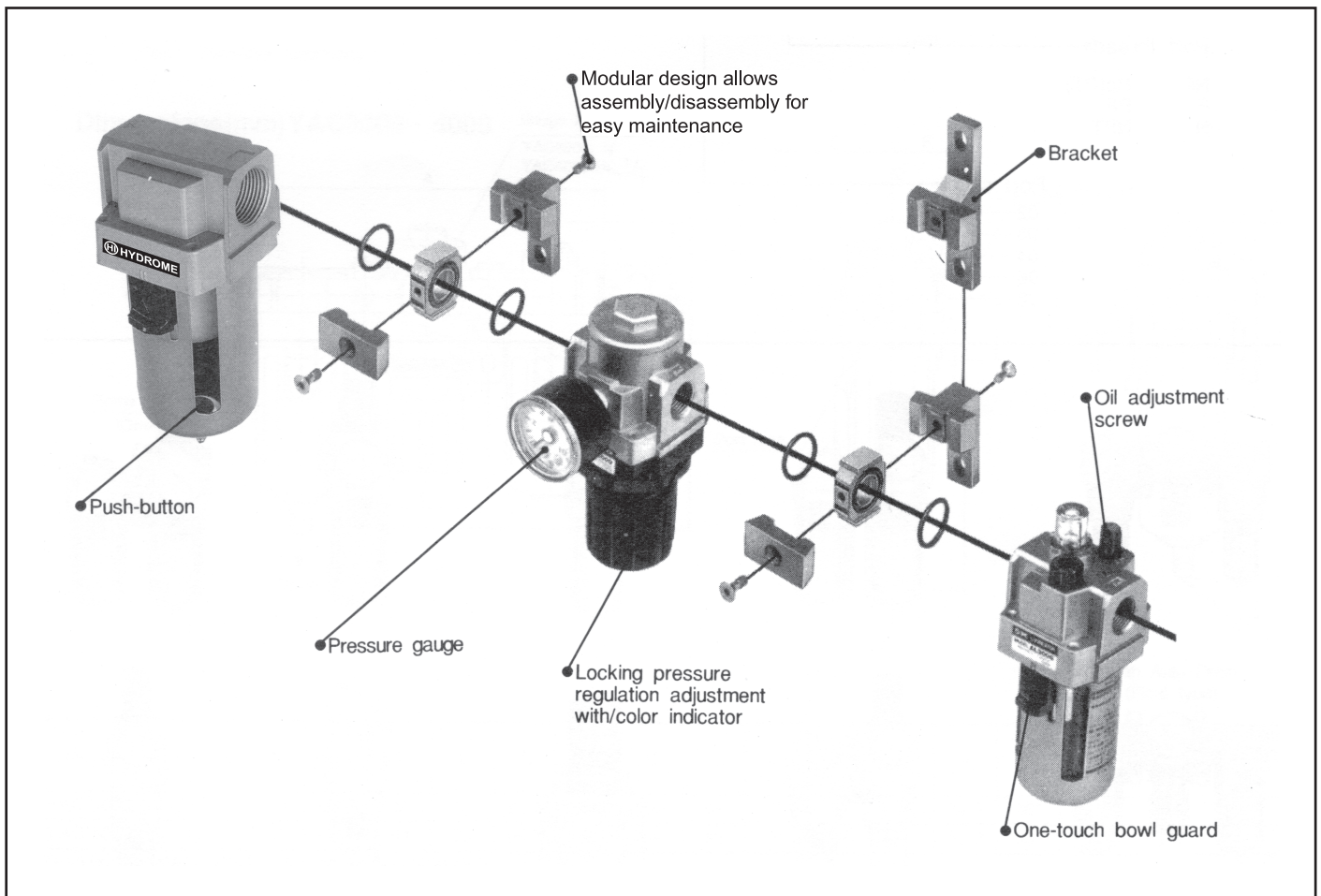
YAC3000 - 03 - N - G - D



Symbol



DECOMPOSITION



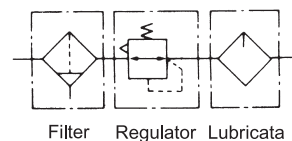
MODULAR TYPE AIR COMBINATION SET

SPECIFICATIONS

MODEL		YAC 3000	YAC 4000	YAC 5000
Combination	Air filter	YAF 3000	YAF 4000	YAF 5000
	Regulator	YAR 3000	YAR 4000	YAR 5000
	Lubricator	YAL 3000	YAL 4000	YAL 5000
Port size		$\frac{1}{4} \cdot \frac{3}{8}$	$\frac{3}{8} \cdot \frac{1}{2} \cdot \frac{3}{4}$	$\frac{3}{4} \cdot 1$
Port size for pressure gauge		$\frac{1}{8}$	$\frac{1}{4}$	$\frac{1}{4}$
Max. supply pressure kgf/cm ²		15		
Max. operating pressure kgf/cm ²		9.9		
Regulating range kgf/cm ²		0.5-8.5		
Max.Flow rate NI/min		2000	4000	5000
Ambient and media temperature		-5~60°C		
Filtration		Standard:5 μ m, Option: 2,10,20,40 μ m		
Recommended oil		Turbin oil ISO VG32		
Bowl material		Polycarbonate		
Construction/Regulator		Relieving type		
Weight kg		1.27	2.52	4.36
Accessories (standard)	Bowl guard	•	•	•
	Bracket	B310L	B410L	B610L

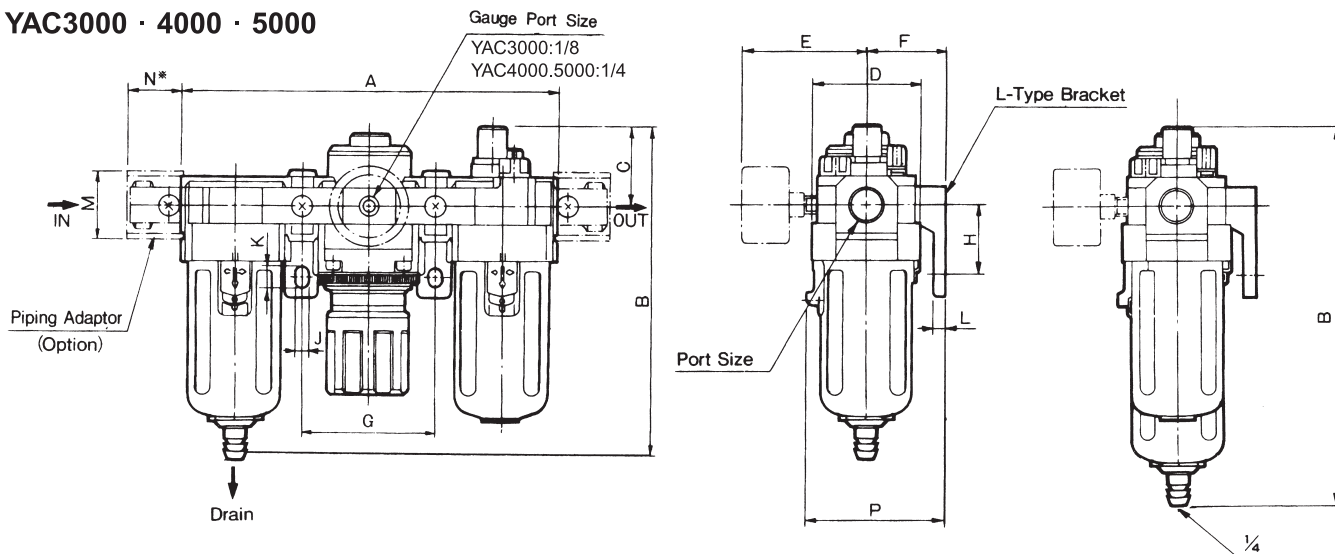
*Conditions: Supply pressure 7kgf/cm², setting pressure:5kgf/cm²

Symbol



DIMENSIONS (mm)

YAC3000 · 4000 · 5000



MODEL	PORT SIZE	A	B	C	D	E	F	G	H	J	K	L	M	N	P
YAC 3000	$\frac{1}{4} \cdot \frac{3}{8}$	181	156.5	38	53	60.8	41	64	34	7	11	7	34.2	26*	70.5
YAC 4000	$\frac{3}{8} \cdot \frac{1}{2} \cdot \frac{3}{4}$	238	191.5	41	70	65.5	50	84	40	9	13	7	42.2	33*	88
YAC 5000	$\frac{3}{4} \cdot 1$	300	267	45	90	75	70	105	50	12	15.5	10	55.2	40*	115

*Pressure Gauge 40 mm for YAC3000. 50mm for YAC4000.5000

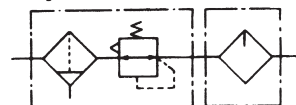
MODULAR TYPE AIR COMBINATION SET

SPECIFICATIONS

MODEL		YAC 3010	YAC 4010	YAC 5010
Combination	Filter Regulator	YAW 3000	YAW 4000	YAW 5000
	Lubricator	YAL 3000	YAL 4000	YAL 5000
Port size		$\frac{1}{4} \cdot \frac{3}{8}$	$\frac{3}{8} \cdot \frac{1}{2} \cdot \frac{3}{4}$	$\frac{3}{4} \cdot 1$
Port size for pressure gauge		$\frac{1}{8}$	$\frac{1}{4}$	$\frac{1}{4}$
Max. supply pressure kgf/cm ²		15		
Max. operating pressure kgf/cm ²		9.9		
Regulating range kgf/cm ²		0.5-8.5		
Max.Flow rate NI/min		1700	3000	5000
Ambient and media temperature		-5~60°C		
Filtration		Standard:5 μ m, Option: 2,10,20,40 μ m		
Recommended oil		Turbin oil ISO VG32		
Bowl material		Polycarbonate		
Construction/Regulator		Relieving type		
Weight kg		0.98	1.93	3.56
Accessories (standard)	Bowl guard	•	•	•
	Bracket	B310T	B410T	B610T

*Conditions: Supply pressure 7kgf/cm², setting pressure:5kgf/cm²

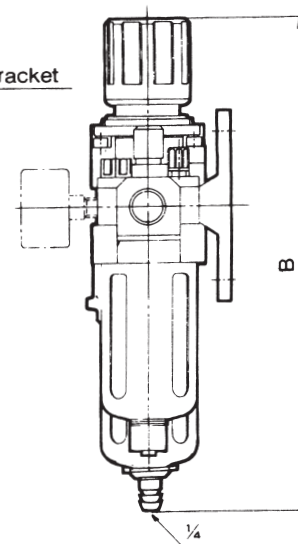
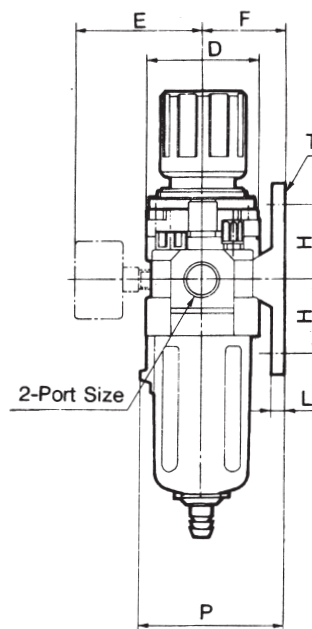
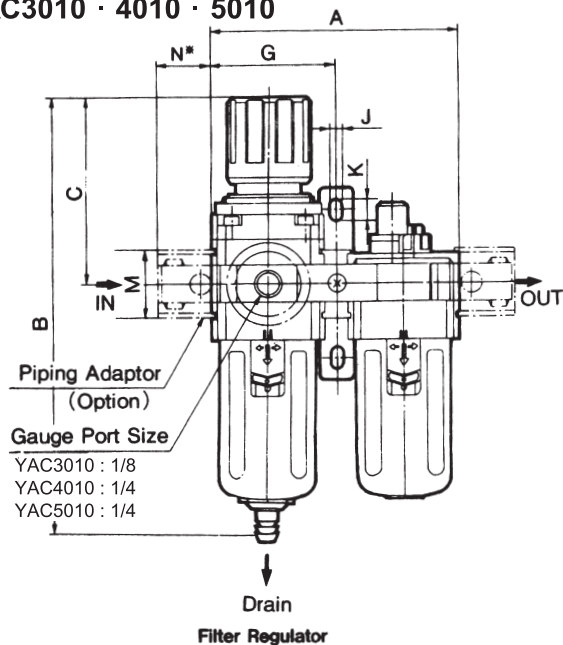
Symbol



Filter Regulator Lubricator

DIMENSIONS (mm)

YAC3010 · 4010 · 5010

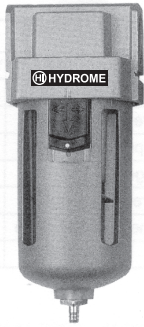


MODEL	PORT SIZE	A	B	C	D	E	F	G	H	J	K	L	M	N	P
YAC 3010	$\frac{1}{4} \cdot \frac{3}{8}$	117	211	92.5	53	60.8	41	58.5	35	7	11	7	34.2	26*	70.5
YAC 4010	$\frac{3}{8} \cdot \frac{1}{2} \cdot \frac{3}{4}$	154	262.5	112	70	70.5	50	77	40	9	13	7	42.2	33*	88
YAC 5010	$\frac{3}{4} \cdot 1$	195	330	120	90	75	70	97.5	50	12	15.5	10	55.2	40*	115

*Pressure Gauge 40 mm for YAC3010. 50mm for YAC4010.5010

AIR FILTER

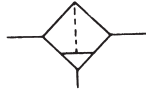
YAF3000
YAF4000



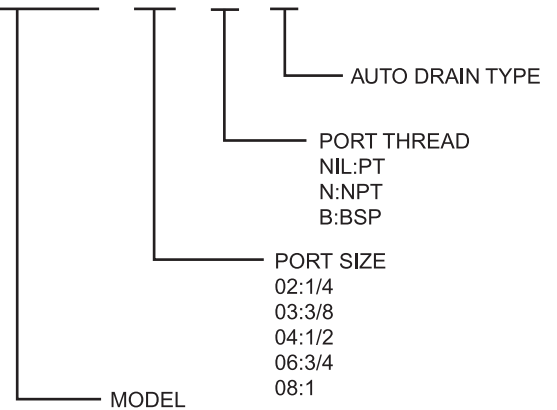
YAF5000



Symbol



HOW TO ORDER YAF3000 - 03 - N - D



SPECIFICATIONS

MODEL	YAF 3000	YAF 4000	YAF 5000
Port size	$\frac{1}{4} \cdot \frac{3}{8}$	$\frac{3}{8} \cdot \frac{1}{2} \cdot \frac{3}{4}$	$\frac{3}{4} \cdot 1$
Max. supply pressure kgf/cm ²	15		
Max. operating pressure kgf/cm ²	9.9		
Ambient and media temperature	-5~60°C		
Filtration	Standard:5 μm, Option: 2,10,20,40,70,100 μm		
Bowl material	Polycarbonate		
Bowl capacity cm ³	20	45	130
Weight kg	0.24	0.45	0.99
Accessory(standard)	Bowl guard	•	•

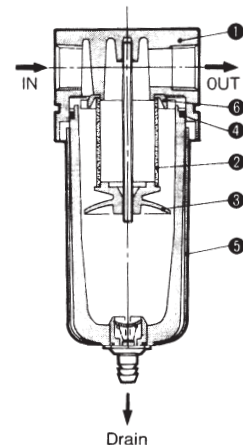
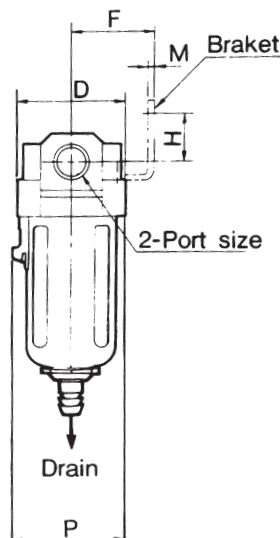
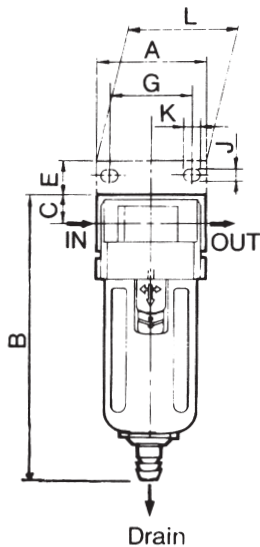
MAIN PARTS

NO.	NAME	MATERIAL	NOTE
		YAF3000,4000,5000	
①	Body	Aluminum die casting	Platinum silver Painting

PARTS LIST

NO.	PART NAME	MATERIAL	PART NO.		
			YAF3000	YAF4000	YAF5000
②	Filter element	Polyrex	111511-5B	11104-5B	11173-5B
③	Baffle	ABS	111522	111622	11175
④	O-ring	NBR	111512	111636	111636
⑤	Bowl assembly	Polycarbonate	C300F	C400F	C400F
⑥	Deflector	ABS	11158	11167	11176

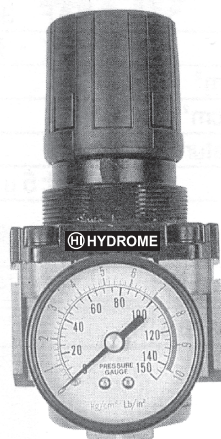
DIMENSIONS (mm)



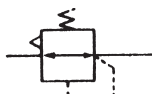
MODEL	PORT SIZE	A	B	C	D	E	F	G	H	J	K	L	M	P
YAF 3000	$\frac{1}{4} \cdot \frac{3}{8}$	53	132.5	14	53	16	41	40	23	6.5	8	53	2.3	56
YAF 4000	$\frac{3}{8} \cdot \frac{1}{2} \cdot \frac{3}{4}$	70	168.5	18	70	17	50	54	26	8.5	10.5	70	2.3	73
YAF 5000	$\frac{3}{4} \cdot 1$	90	247	24	90	23	70	66	35	11	13	90	3.2	90

AIR REGUATOR

YAR3000,4000,5000

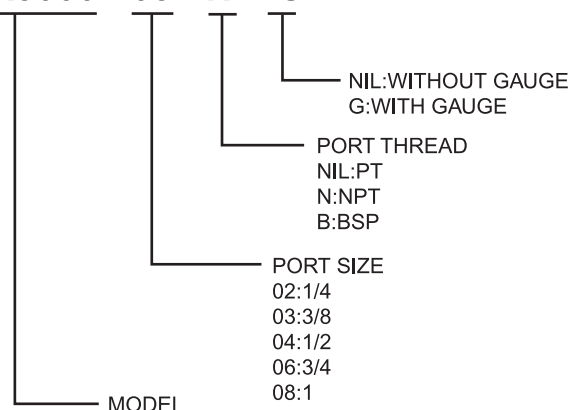


Symbol



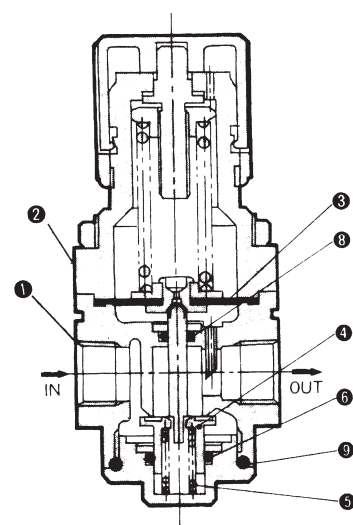
HOW TO ORDER

YAR3000 - 03 - N - G



SPECIFICATIONS

MODEL	YAR 3000	YAR 4000	YAR 5000
Port size	$\frac{1}{4} \cdot \frac{3}{8}$	$\frac{3}{8} \cdot \frac{1}{2} \cdot \frac{3}{4}$	$\frac{3}{4} \cdot 1$
Max. supply pressure kgf/cm ²	15		
Max. operating pressure kgf/cm ²	9.9		
Regulating range kgf/cm ²	0.5~8.5		
Port size for pressure gauge	$\frac{1}{8}$	$\frac{1}{4}$	$\frac{1}{4}$
Ambient and media temperature	-5~60°C		
Weight kg	0.44	0.92	1.4



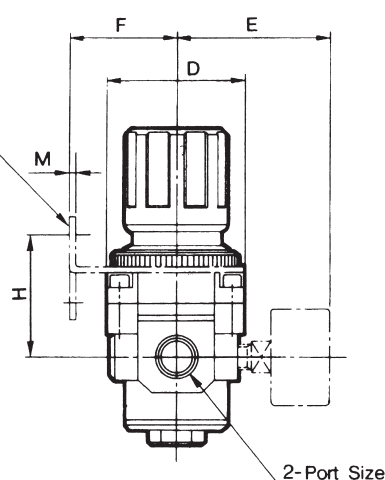
MAIN PARTS

NO.	NAME	MATERIAL	NOTE
		YAR3000,4000,5000	
①	Body	Aluminum die casting	Platinum silver Painting
②	Bonnet	Polyacetal	Black painting

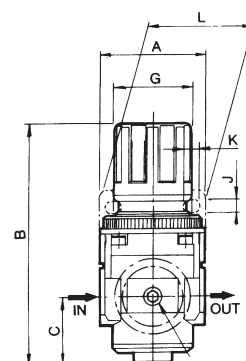
PARTS LIST

NO.	PART NAME	MATERIAL	PART NO.		
			YAR3000	YAR4000	YAR5000
③	Diaphragm ass'y	NBR	131515A	131614A	131614A
④	Valve ass'y	Brass, NBR	13154A	13164A	13173A
⑤	Valve spring	Stainless steel	131558	131613	13174
⑥	Valve O-ring	NBR	JISB2401P14	131643	131710
⑦	Piston mini Y packing	NBR	-	-	-
⑧	O-ring	NBR	JISB2401P5	JISB2401P5	JISB2401P5
⑨	O-ring	NBR	131545	131647	JISB2401P50

Bracket



2-Port Size



Gauge Port

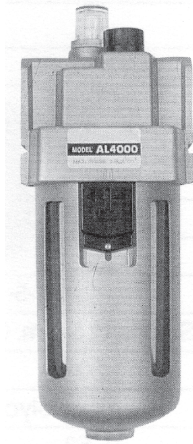
YAR3000:1/8
 YAR4000:1/4
 YAR5000:1/4

DIMENSIONS (mm)

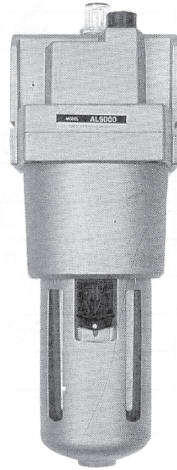
MODEL	PORT SIZE	A	B	C	D	E	F	G	H	J	K	L	M
YAR 3000	$\frac{1}{4} \cdot \frac{3}{8}$	53	127.5	35	53	60.8	41	40	46	6.5	8	53	2.3
YAR 4000	$\frac{3}{8} \cdot \frac{1}{2} \cdot \frac{3}{4}$	70	149.5	37.5	70	65.5	50	54	54	8.5	10.5	70	2.3
YAR 5000	$\frac{3}{4} \cdot 1$	90	164	48	90	75	47	42	63	85	10.5	65	2.3

AIR LUBRICATOR

YAL3000,4000

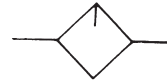


YAL5000



HOW TO ORDER YAL3000 - 03 - N

Symbol



PORT THREAD
NIL:PT
N:NPT
B:BSP

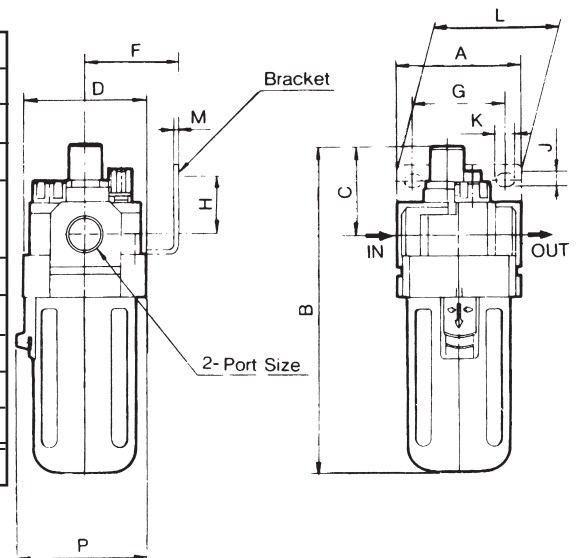
PORT SIZE
02:1/4
03:3/8
04:1/2
06:3/4
08:1

MODEL

SPECIFICATIONS

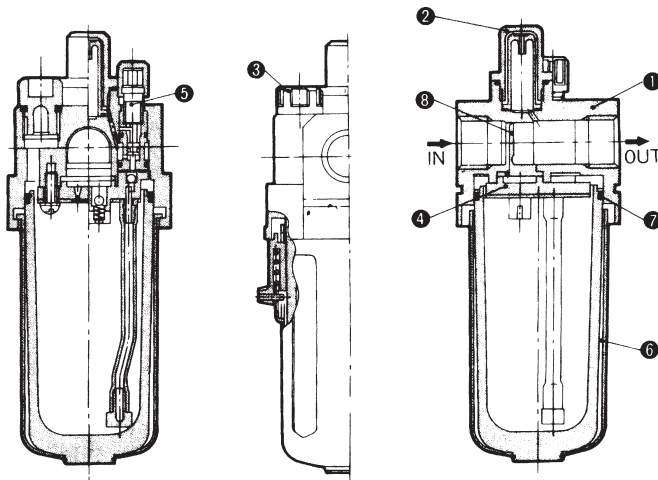
MODEL	YAL 3000	YAL 4000	YAL 5000
Port size	1/4 · 3/8	3/8 · 1/2 · 3/4	3/4 · 1
Max. supply pressure kgf/cm ²	15		
Max. operating pressure kgf/cm ²	9.9		
Min operating flow*NI/min	1/4 : 30 3/8 : 40	3/8 : 40 1/2 : 50	190
Bowl capacity cm ³	50	130	130
Recommended oil	ISO VG32		
Ambient and media temperature	-5~60°C		
Bowl material	Polycarbonate		
Weight kg	0.27	0.49	1.08
Accessory(standard)	Bowl guard	•	•

*Conditions: Supply pressure;5kg/cm²,Number of drop;5 drops/min,ISOVG32.



MAIN PARTS

NO.	NAME	MATERIAL	NOTE
		YAL3000,4000,5000	
①	Body	Aluminum die casting	Platinum silver Painting



PARTS LIST

NO.	PART NAME	MATERIAL	PART NO.		
			YAL3000	YAL4000	YAL5000
②	Sight dome ass'y	Polycarbonate	12155A	12155A	12155A
③	Filler cap ass'y	-	12159A	12164A	12164A
④	Damper guide ass'y	-	121521A	121611A	12325A
⑤	Needle valve ass'y	-	121522A	121522A	121616A
⑥	Bowl ass'y*	-	C300L	C400L	C400L
⑦	O-ring	NBR	111512	111636	111636
⑧	Damper	Synthetic resin	12158 -2(03) -1(02)	12165 -2(04) -1(03)	123210A

*Bowl Assemblies of AL3000, AL4000 and AL5000 are fitted with bowl guard.

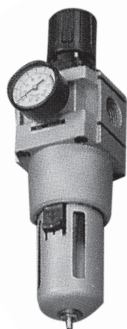
MODEL	PORT SIZE	A	B	C	D	F	G	H	J	K	L	M	P
YAL 3000	1/4 · 3/8	53	142	38	53	41	40	23	6.5	8	53	2.3	56
YAL 4000	3/8 · 1/2 · 3/4	70	177	41	70	50	54	26	8.5	10.5	70	2.3	73
YAL 5000	3/4 · 1	90	254	45	90	70	66	35	11	13	90	3.2	90

AIR FILTER REGULATOR

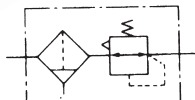
YAW3000
YAW4000



YAW5000

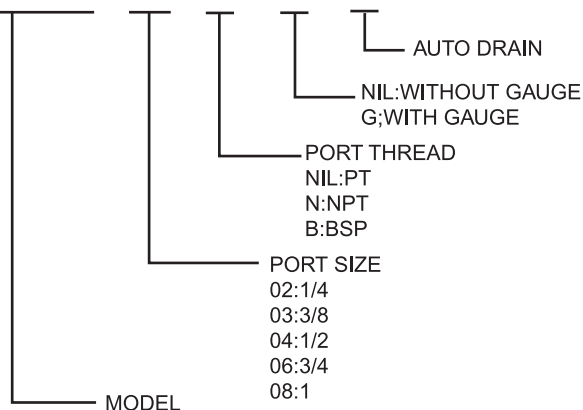


Symbol



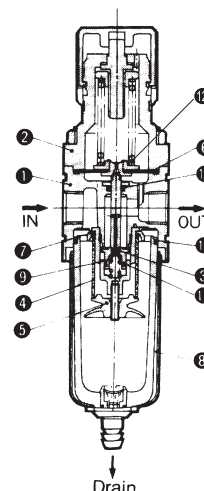
HOW TO ORDER

YAW3000 - 03 - N - G - D



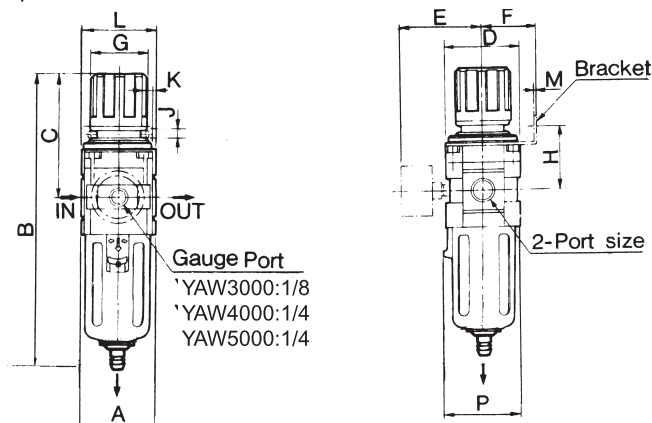
SPECIFICATIONS

MODEL	YAW 3000	YAW 4000	YAW 5000
Port size	$\frac{1}{4} \cdot \frac{3}{8}$	$\frac{3}{8} \cdot \frac{1}{2} \cdot \frac{3}{4}$	$\frac{3}{4} \cdot 1$
Max. supply pressure kgf/cm ²	15		
Max. operating pressure kgf/cm ²	9.9		
Regulating range kgf/cm ²	0.5 - 8.5		
Port size for pressure gauge	$\frac{1}{8}$	$\frac{1}{4}$	$\frac{1}{4}$
Ambient and media temperature	-5~60°C		
Filtration	Standard:5 μm, Option: 2,10,20,40 μm		
Bowl capacity cm ³	20	45	130
Bowl material	Polycarbonate		
Weight kg	0.53	1.15	2.037
Accessory(standard)	Bowl guard	•	•



MAIN PARTS

NO.	NAME	MATERIAL			NOTE
		YAW3000	YAW4000	YAW5000	
①	Body	Aluminum die casting			Platinum silver Painting
②	Bonnet	Polyacetal	Aluminum Die casting		Black painting



PARTS LIST

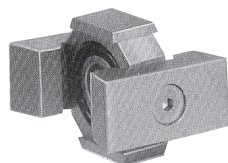
NO.	PART NAME	MATERIAL	PART NO.		
			YAW3000	YAW4000	YAW5000
③	Valve ass'y	Brass. NBR	131523A	131623A	131723A
④	Filter element	Polyrex	111511-5B	11104-5B	11173-5B
⑤	Baffle	ABS	111522	111622	11175
⑥	Diaphragm ass'y	NBR	131515A	131614A	131614A
⑦	Deflector	ABS	11158	11167	11176
⑧	Bowl ass'y	Polycarbonate	C300F	C400F	C500F
⑨	Valve spring	Stainless steel	131525	131625	131725
⑩	Case O-ring	NBR	111512	111636	111636
⑪	Valve O-ring	NBR	131544	131645	131745
⑫	Seal	NBR	-	-	-
⑬	O-ring	NBR	JISB2401P5	JISB2401P5	JISB2401P5

Condition: Bowl assemblies of AW3000, AW4000, AW5000 are fitted with bowl guard.

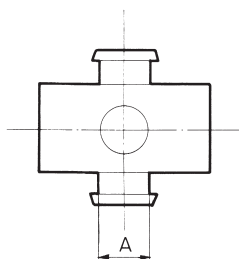
MODEL	PORT SIZE	A	B	C	φD	E	F	G	H	J	K	L	M	P
YAW 3000	$\frac{1}{4} \cdot \frac{3}{8}$	53	211	92.5	53	60.8	41	40	46	6.5	8	53	2.3	56
YAW 4000	$\frac{3}{8} \cdot \frac{1}{2} \cdot \frac{3}{4}$	70	262.5	112	70	70.5	50	54	54	8.5	10.5	70	2.3	73
YAW 5000	$\frac{3}{4} \cdot 1$	90	330	120	90	75	70	66	63	11	13	90	3.2	90

ACCESSORIES OF AIR COMBINATION SET

SPACER

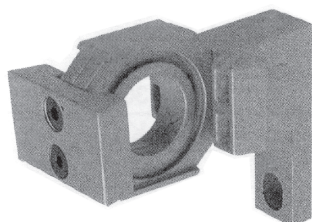


Y30
Y40
Y60



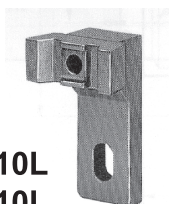
MODEL	A	APPLICABLE MODEL
Y30	11	AC3000
Y40	14	AC4000
Y60	15	AC5000

SPACER WITH L-TYPE BRACKET

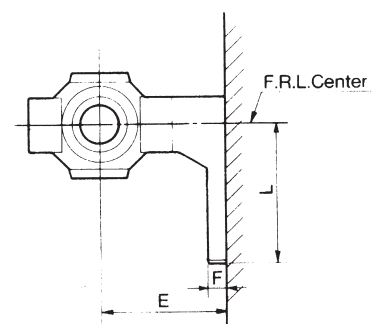
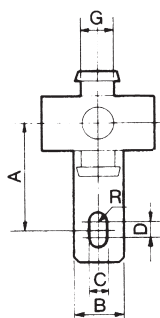


Y30L
Y40L
Y60L

L-TYPE BRACKET

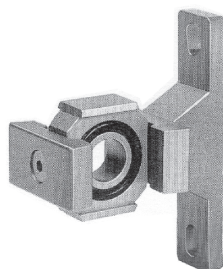


B310L
B410L
B610L



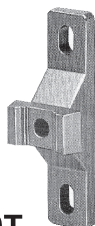
L-TYPE BRACKET	SPACER WITH L-TYPE BRACKET	A	B	C	D	E	F	G	R	L	APPLICABLE MODEL
B310L	Y30L	35	16	7	4	41	7	11	3.5	45	AC3000
B410L	Y40L	40	22	9	4	50	7	14	4.5	50	AC4000
B610L	Y60L	50	24	12	4	70	10	15	6	62.5	AC5000

SPACER WITH T-TYPE BRACKET

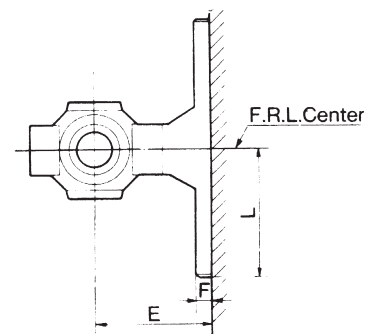
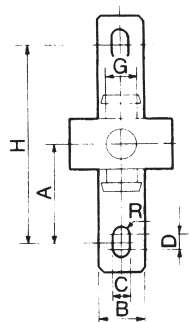


Y30T
Y40T
Y60T

T-TYPE BRACKET



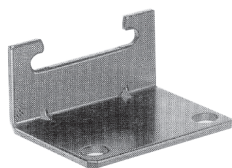
B310T
B410T
B610T



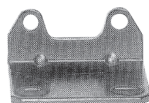
T-TYPE BRACKET	SPACER WITH T-TYPE BRACKET	A	B	C	D	E	F	G	H	R	L	APPLICABLE MODEL
B310T	Y30T	35	16	7	4	41	7	11	70	3.5	45	AC3010
B410T	Y40T	40	22	9	4	50	7	14	80	4.5	50	AC4010
B610T	Y60T	50	24	12	4	70	10	15	100	6	62.5	AC5010

ACCESSORIES OF AIR COMBINATION SET

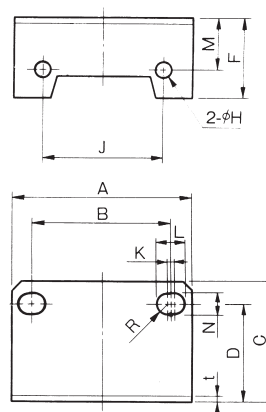
**BRACKET
FOR AF AL**



B440



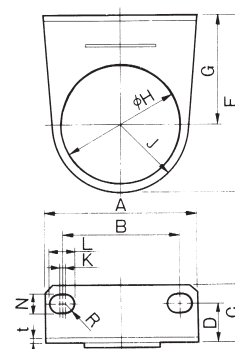
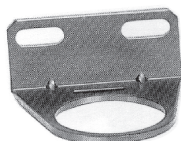
B340



DIMENSIONS (mm)

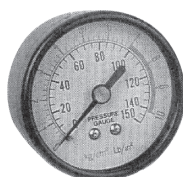
MODEL	A	B	C	D	F	ØH	J	K	L	M	N	R	t	MOUNTING SCREW (HEAD CAP SCREW)	APPLICABLE MODEL
B340	53	40	39	32	22.5	4.5	35	1.5	8	19	6.5	3.25	2.3	M4X8l (Hexagon socket)	AF3000,AL3000
B440	70	54	47	38	31.5	5.5	47	2	10.5	20	8.5	4.25	2.3	M5X10l (Hexagon socket)	AF4000,AL4000
B640	90	66	64	52	43	6.5	65	2	13	30	11	5.5	3.2	M6X10l (Hexagon socket)	AF5000,AL5000

FOR AR AW



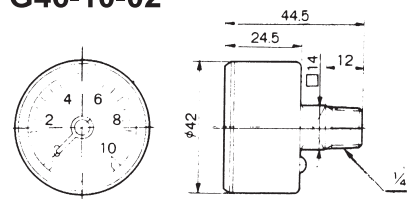
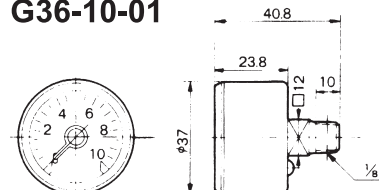
DIMENSIONS (mm)

MODEL	A	B	C	D	F	G	ØH	J	K	L	N	R	t	APPLICABLE MODEL
B320	53	40	21	13.5	66	41	42.5	25	1.5	8	6.5	3.25	2.3	AR3000,AW3000
B420	70	54	27	18	80	50	52.5	30	2	10.5	8.5	4.25	2.3	AR4000,AW4000



PRESSURE GAUGE

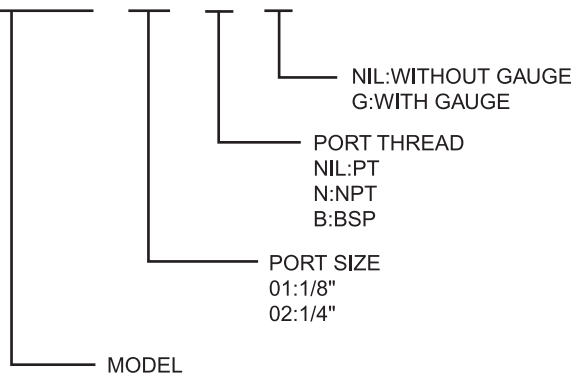
MODEL	APPLICABLE MODEL
G36-10-01	YAR3000 .YAW3000 .YAC3000 .YAC3010
G46-10-02	YAR4000 .YAW4000 .YAC4000 .YAC4010
G46-10-02	YAR5000 .YAW5000 .YAC5000 .YAC5010



MINI TYPE F.R.L COMBINATION

HOW TO ORDER

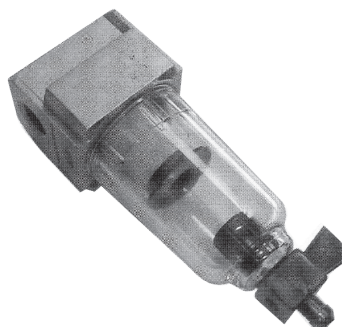
YAC2000 - 01 - N - G



YAR2000



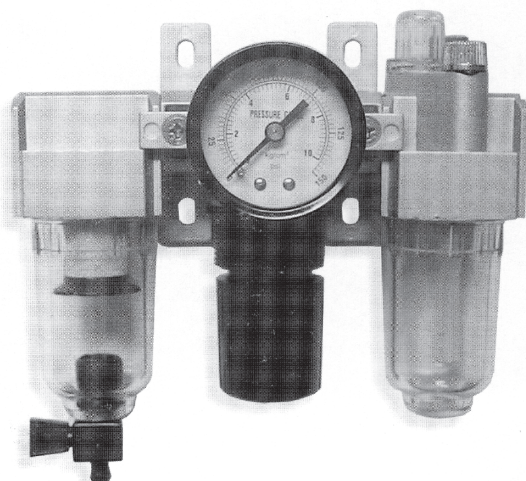
YAW2000



YAF2000



YAL2000



YAC2000



YAC2010

MINI TYPE F.R.L COMBINATION

MODEL	YAC2000		YAC2010		YAW2000		YAR2000		YAF2000		YAL2000	
Port Size	1/8"	1/4"	1/8"	1/4"	1/8"	1/4"	1/8"	1/4"	1/8"	1/4"	1/8"	1/4"
Max. Flow l/min.	1000	1100	1000	1100	1000	1100	1000	1100	1000	1100	1000	1100
Max. Supply pressure	10.5 kgf/cm ²											
Adj. Pressure Range	0.5-9.9 kgf/cm ²											
Ambient Temperature	-5~60℃											
Filtration	20 μ											
Recommended Oil	ISO VG32											
Weight kg	0.92		0.63		0.44		0.26		0.23		0.26	

DIMENSIONS (mm)

