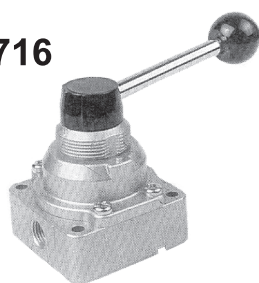


HAND VALVE

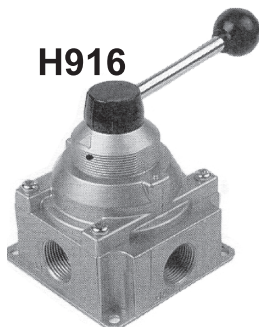
H716



H816



H916



Symbol



SPECIFICATIONS

MODEL	H716	H816	H916
Port size	$\frac{1}{8} \cdot \frac{1}{4}$	$\frac{1}{4} \cdot \frac{3}{8} \cdot \frac{1}{2}$	$\frac{3}{4} \cdot 1$
Max. working pressure kgf/cm ²	10		
Max. working temp.	60°C		
Hand operated degrees	45°		
Weight kg	0.6	0.83	1.43

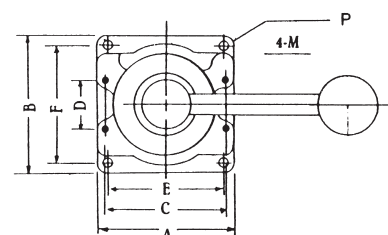
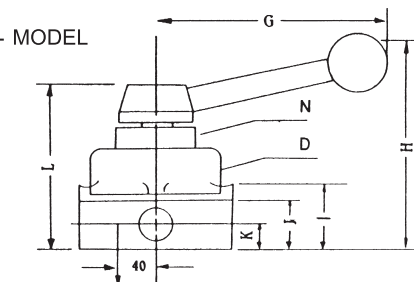
DIMENSIONS (mm)

MODEL	A	B	C	D	E	F	G	H	I	J	K	L	M	N	O	P
H716	62	62	50	26	56	50	93	90	31	23	11	73	M4XP0.7	33Φ	47Φ	4-6Φ
H816	74	74	67	18	61	61	119	113	37	27	13	93	M5XP0.8	40Φ	58Φ	4-7Φ
H916	108	108	92	45	92	92	120	145	46	41	19	120	M6XP1.0	52Φ	82Φ	4-7Φ

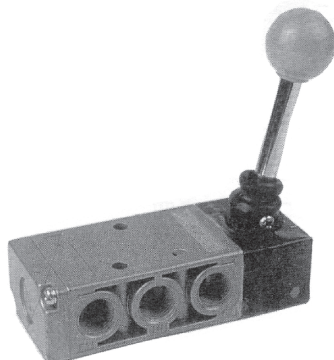
HOW TO ORDER

H816 — 02 — N

PORT THREAD NIL:PT
N:NPT
B:BSP
PORT SIZE
02:1/4 04:1/2 08:1
03:3/8 06:3/4



H815



Symbol



SPECIFICATIONS

MODEL	H815
Port size	$\frac{1}{4} \cdot \frac{3}{8}$
Max. working pressure kgf/cm ²	10
Max. working temp.	60°C
Fluid	Air
Weight kg	1.01

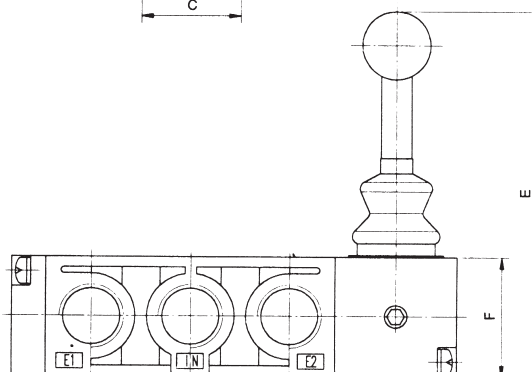
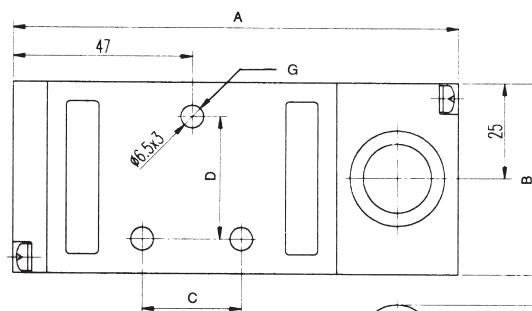
DIMENSIONS (mm)

MODEL	A	B	C	D	E	F	G
H815	117	50	26	32	97	32	3-Φ6.5

HOW TO ORDER

H815 — 02 — N

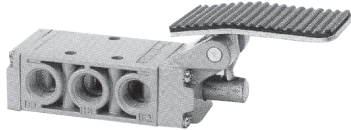
PORT THREAD NIL:PT
N:NPT
B:BSP
PORT SIZE
02:1/4 03:3/8



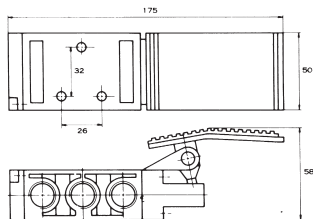
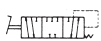
FOOT OPERATED VALVE

5-WAY

F815

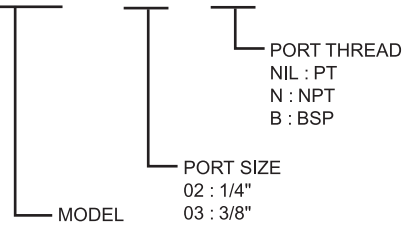


KO256



HOW TO ORDER

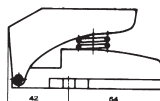
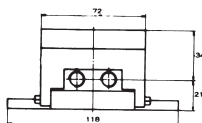
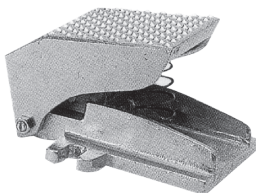
F815 — 02 — N



SPECIFICATIONS :

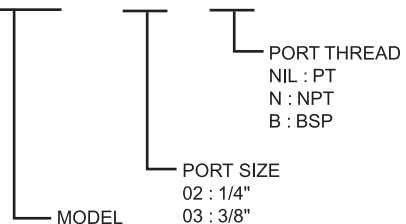
MODEL	PORT SIZE	WORKING PRESSURE	WEIGHT kg
F815-02	1/4"	0-10 kgf/cm ²	1.02
F815-03	3/8"		
KO256	1/4"		0.63
KO258	3/8"		

3-WAY



HOW TO ORDER

F817 — 02 — N



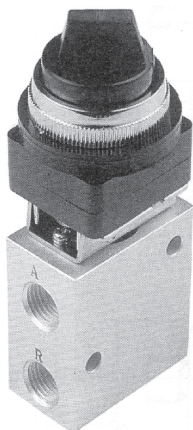
SPECIFICATIONS :

MODEL	PORT SIZE	WORKING PRESSURE	WEIGHT kg
F817-02	1/4"	0-10 kgf/cm ²	0.5
F817-03	3/8"		

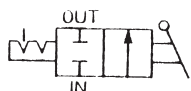
MECHANICAL VALVE

2,3 way

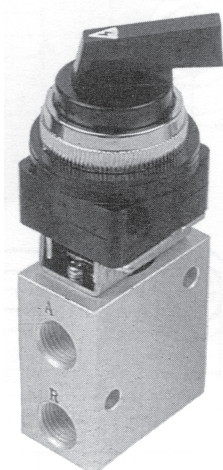
YVM220



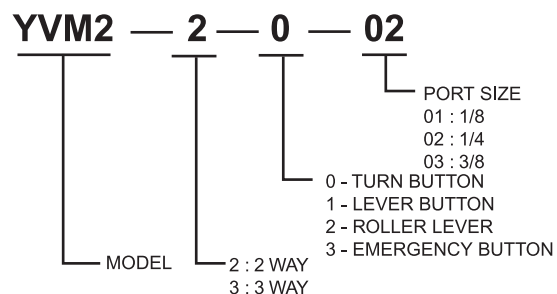
Symbol



YVM221



HOW TO ORDER

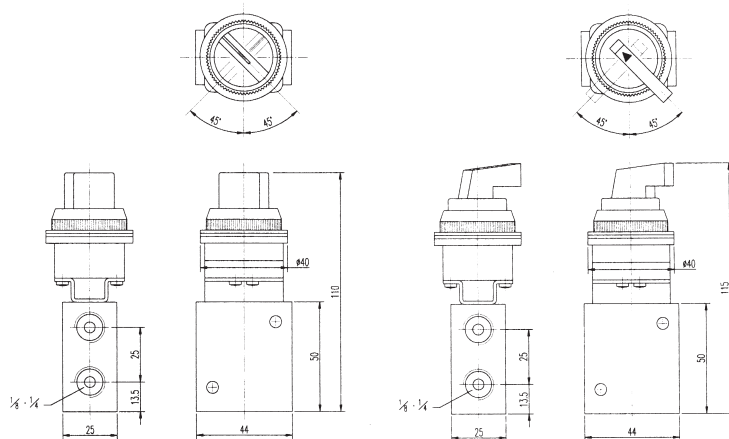
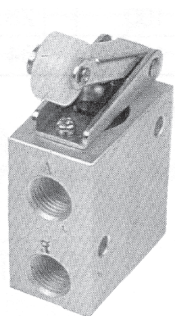
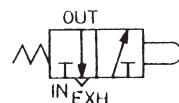
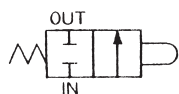


SPECIFICATIONS :

Max. Working Pressure	10 kgf/cm ²
Max. Working Temperature	60°C
Hand Operated Degree	45°
Fluid	Air

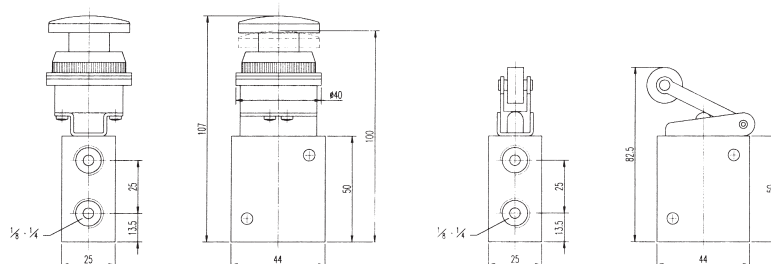
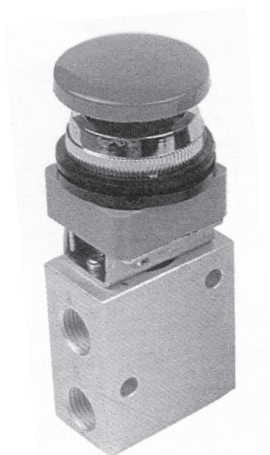
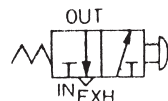
YVM222

Symbol

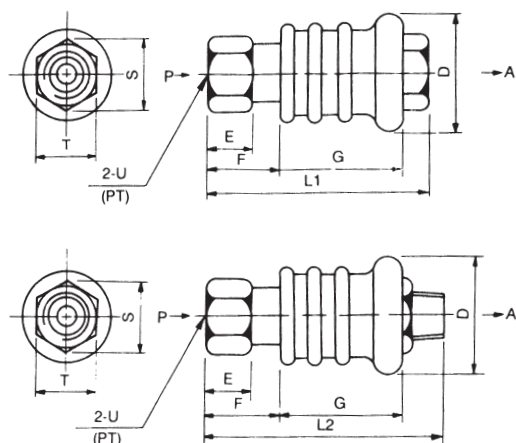
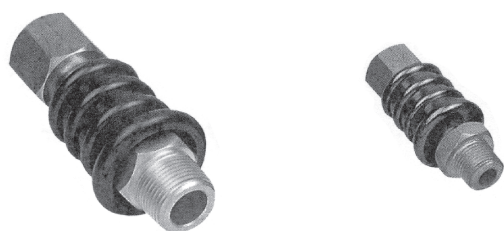


YVM223

Symbol



HAND SILDE VALVE, 3 PORT HAND VALVE



HOW TO ORDER

H 818 — ✕ — 01

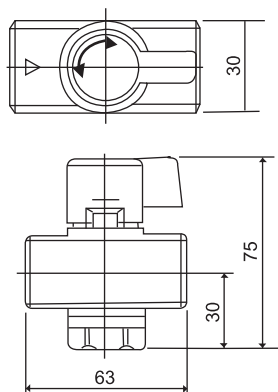
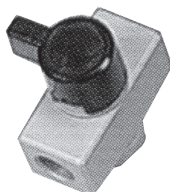
PORT SIZE
01:1/8"
02:1/4"
03:3/8"
04:1/2"

OUT SIDE
MM:MALE→MALE
FM:FEMAL→MALE
MF:MALE→FEMALE
FF:FEMALE→FEMALE

MODEL

MODEL	D	E	F	G	L ₁	L ₂	S	T	U
H818-01	25	10	16	26	51	55	16.2	14	1/8
H818-02	25	15	21	26	57	62	19.6	17	1/4
H818-03	32	15	24	31	65	70	25.4	22	3/8
H818-04	48	20	33.5	46	98	100	28.9	25	1/2

VHS400



HOW TO ORDER

VHS400 — 02 — ✕

PORT SIZE
02:1/4"
03:3/8"
04:1/2"

PORT THREAD
NIL : PT
N : NPT
B : BSP

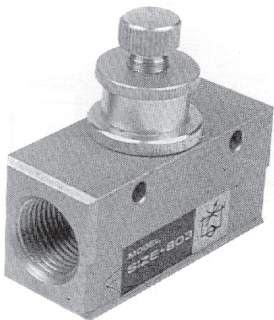
MODEL

SPECIFICATIONS

MODEL	PORT	EFFECTIVE ORIFICE mm ²		PRESSURE kgf/cm ²
		IN → OUT	IN → EXH	
VHS400	1/4 · 3/8 · 1/2	1/4 : 20.8	34.8	1-10
		3/8 : 35.3	53.7	
		1/2 : 57	75.5	

AIR SPEED CONTROL VALVE

S300

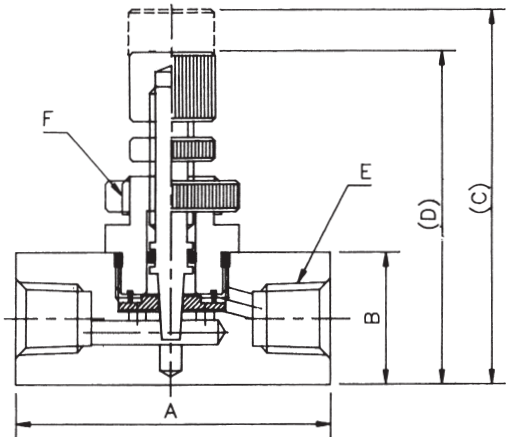
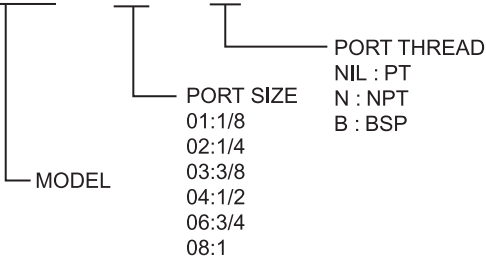


Symbol



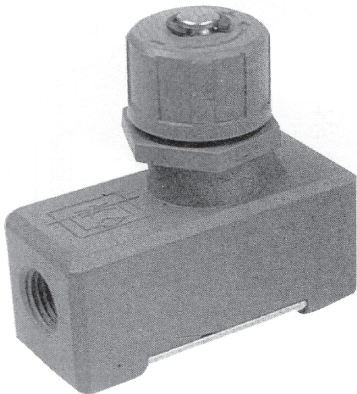
HOW TO ORDER

S300 — 02 — ✖



MODEL	PORT SIZE	A	B	C	D	E	F
S300-01	1/8"	45	19	53	46	14	8
S300-02	1/4"	45	19	53	46	14	11
S300-03	3/8"	55	25	65	55	18	15
S300-04	1/2"	60	32	68	60	22	18
S300-06	3/4"	77	51	123	102	26	26
S300-08	1"	77	51	123	102	30	31

S500

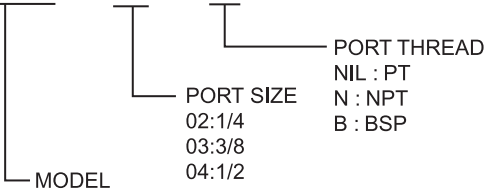


Symbol

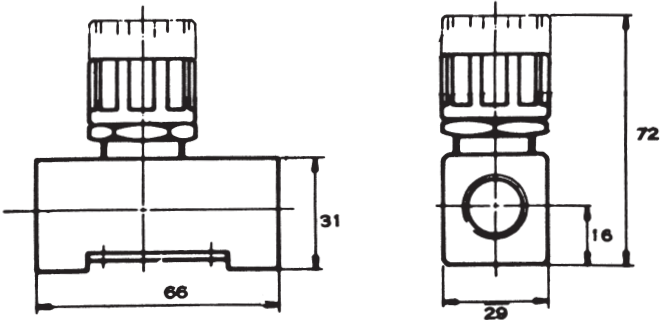


HOW TO ORDER

S500 — 02 — ✖

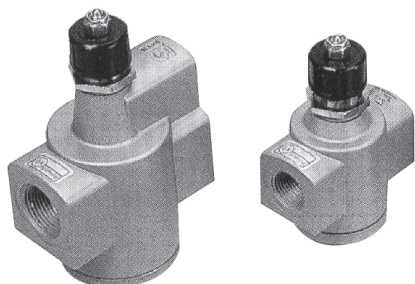


Max. working pressure	10kg/cm ²
Max. working temp	60°C
Fluid	Air



ACTUATORS SPEED CONTROLLER

YAS SERIES



YAS600

YAS500



HOW TO ORDER

YAS-500 — ※ — ※

PORT THREAD
NIL : PT
N : NPT
B : BSP

PORT SIZE
04-1/2
06-3/4
08-1

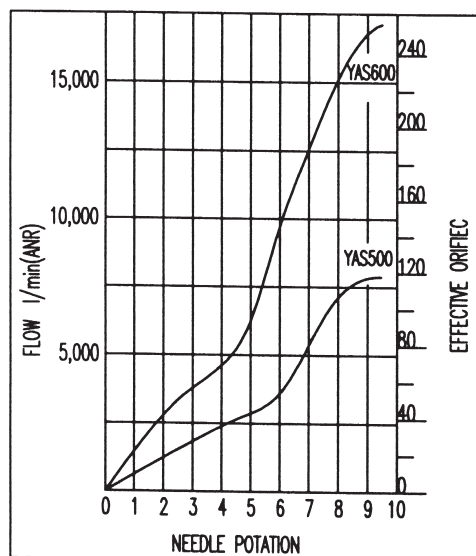
MODEL
500 : 1/2 , 3/4
600 : 3/4 , 1

SPECIFICATIONS

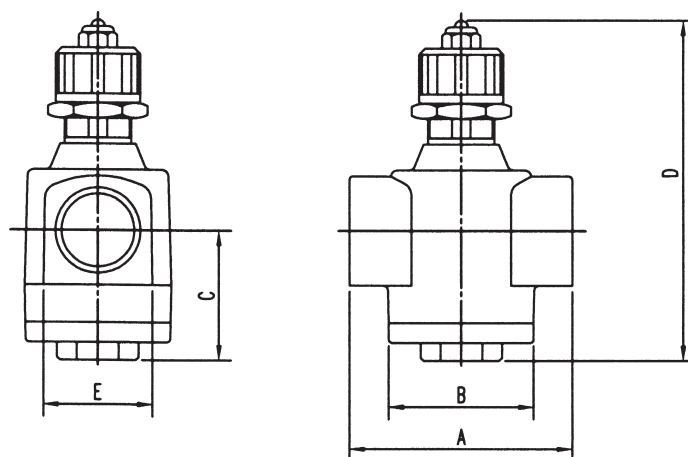
MODEL	PORT	OUT → IN		IN → OUT		FOR AIR CYLINDER BORE (mm)	WEIGHT (g)
		FLOW l/min(ANR)	ORIFICE mm ²	FLOW l/min(ANR)	ORIFICE mm ²		
YAS500-04	1/2	6,600	100	6,700	102	63.80.100.125	480
YAS500-06	3/4	10,100	154	8,100	123	140.160.180.200	450
YAS600-06	3/4	12,100	184	9,800	165	140.160.180.200	820
YAS600-08	1	15,100	230	16,900	258	160.180.200.250	780

Max. pressure	1.5MPa (15.3 kgf/cm ²)
Max. working pressure	1MPa (10.2 kgf/cm ²)
Min. working pressure	0.05MPa (0.51 kgf/cm ²)
Ambient and media temperature	5-60°C
Needle rotation	9 Rotation

FLOW CHARACTERISTICS YAS500 YAS600



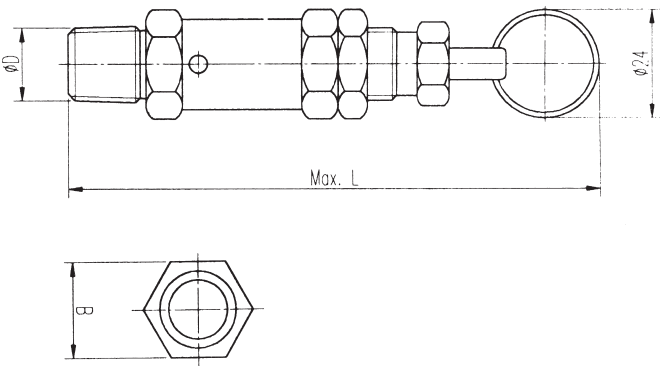
CAUTION :
PLEASE NOTE IN OR OUT
NEEDLE ROTATION 9



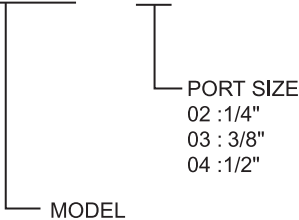
MODEL	PORT SIZE	A	B	C	D		E
					MIN.	MAX.	
YAS 500	1/2 , 3/4	74	∅48	43	110	118	36
YAS 600	3/4 , 1	90	∅60	57	147	156	44

AIR SAFETY VALVE, CHECK VALVE, QUICK EXHAUST VALVE

AIR SAFETY VALVE YS 200



HOW TO ORDER YS200 — 02



MODEL	WORKING PRESSURE	B	D	L
YS200-02	10 kgf/cm ²	SW14	1/4	65
YS200-03		SW19	3/8	105
YS200-04		SW21	1/2	115

CHECK VALVE



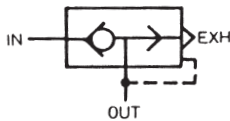
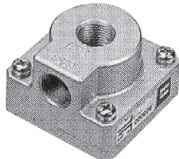
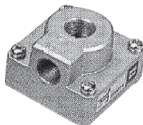
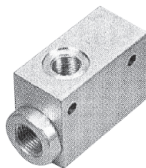
MODEL	PORT SIZE	WORKING PRESSURE
YAK-01	1/8	10 kgf/cm ²
YAK-02	1/4	
YAK-03	3/8	
YAK-04	1/2	

QUICK EXHAUST VALVE

YAQ1500

YAQ3000

YAQ5000



MODEL	PORT SIZE	WORKING PRESSURE
YAQ1500-01	1/8	10 kgf/cm ²
YAQ1500-02	1/4	
YAQ1500-03	3/8	
YAQ3000-03	3/8	
YAQ3000-04	1/2	
YAQ5000-06	3/4	
YAQ5000-08	1	