

## Contents

- 04-08 DUMP TRUCK PUMP 傾倒車泵浦
- 09 FLOW DIVIDER 同步分流閥
- 10-13 HR SERIES HR系列
- 14-16 GP SERIES GP系列
- 17-18 HITACHI SERIES 日立系列
- 19-27 KOMATSU SERIES 小松系列
- 28-29 KOBELCO & CATERPILLAR SERIES 神岡&卡特系列
- 30 FURUKAWA SERIES 古河系列
- 31-32 OTHER PRODUCTS 其他產品

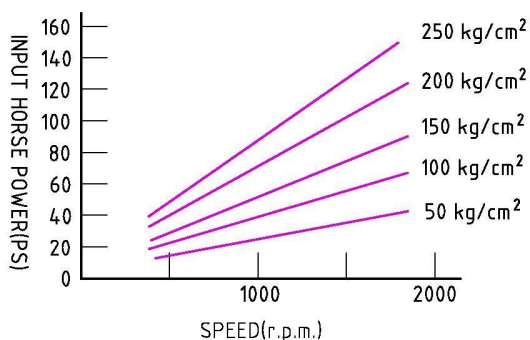
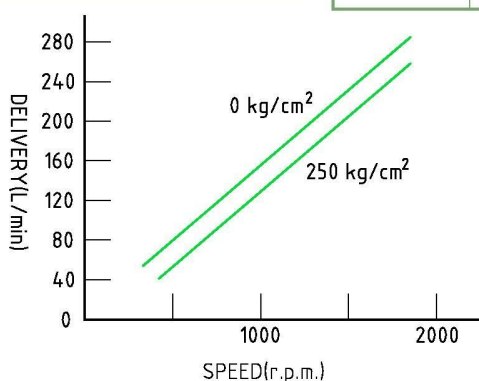
## ■ Dump Truck Pump 傾倒車用泵浦

A: 左迴轉/COUNTERCLOCKWISE  
C: 右迴轉/CLOCKWISE

KP-1505



使用壓力 PRESSURE	MAX.	kg/cm <sup>2</sup>	250	活閥控制線活動壓力 VALVE CONTROL WIRE ACTUATING PRESSURE	kg	15
	RATED	kg/cm <sup>2</sup>	80	軸直徑 SHAFT DIAMETER	mm	30
排油量 DISPLACEMENT		cm <sup>3</sup> /rev.	162	重量 WEIGHT	kg	38
迴轉速度 SPEED	MAX.	r.p.m.	1800	使用油種類 OIL	MOBIL DTE 32 OR EQUIVALENT	
	MIN.	r.p.m.	350	迴轉方向 SHAFT ROTATION	A/C	



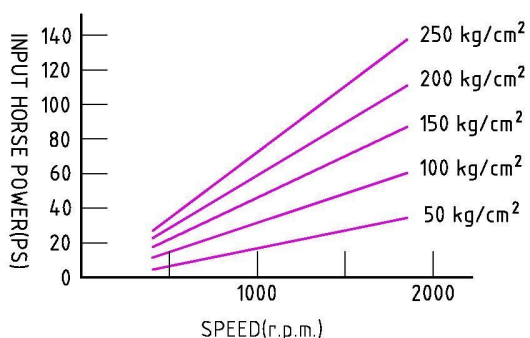
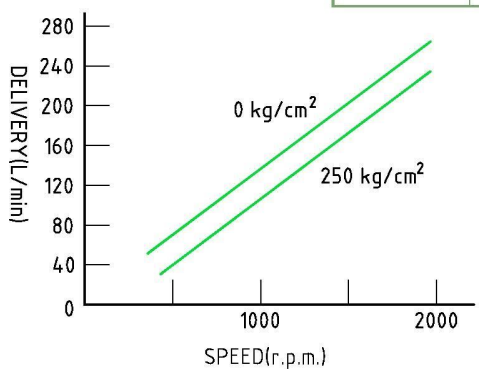
## ■ Dump Truck Pump 傾倒車用泵浦

A: 左迴轉/COUNTERCLOCKWISE  
C: 右迴轉/CLOCKWISE

KP-1403



使用壓力 PRESSURE	MAX.	kg/cm <sup>2</sup>	250	活閥控制線活動壓力 VALVE CONTROL WIRE ACTUATING PRESSURE	kg	15
	RATED	kg/cm <sup>2</sup>	80	軸直徑 SHAFT DIAMETER	mm	30
排油量 DISPLACEMENT		cm <sup>3</sup> /rev.	136.1	重量 WEIGHT	kg	37
迴轉速度 SPEED	MAX.	r.p.m.	1800	使用油種類 OIL	MOBIL DTE 32 OR EQUIVALENT	
	MIN.	r.p.m.	350	迴轉方向 SHAFT ROTATION	A/C	

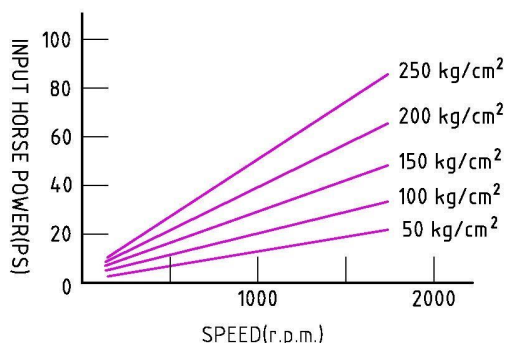
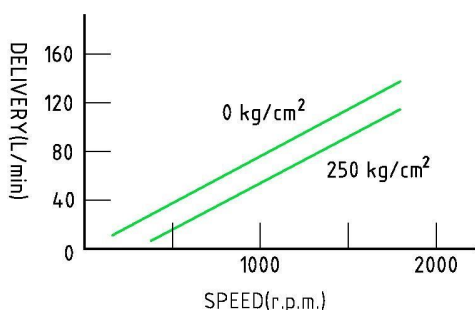


## ■ Dump Truck Pump 傾倒車用泵浦

KP-75



使用壓力 PRESSURE	MAX.	kg/cm <sup>2</sup>	250	活閥控制線活動壓力 VALVE CONTROL WIRE ACTUATING PRESSURE	kg	14
	RATED	kg/cm <sup>2</sup>	70	軸直徑 SHAFT DIAMETER	mm	25
排油量 DISPLACEMENT		cm <sup>3</sup> /rev.	72	重量 WEIGHT	kg	21
迴轉速度 SPEED	MAX.	r.p.m.	1800	使用油種類 OIL	MOBIL DTE 32 OR EQUIVALENT	
	MIN.	r.p.m.	350	迴轉方向 SHAFT ROTATION	A/反轉 (COUNTERCOLCKWISE)	

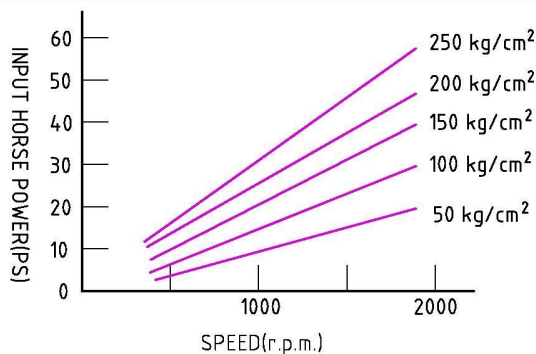
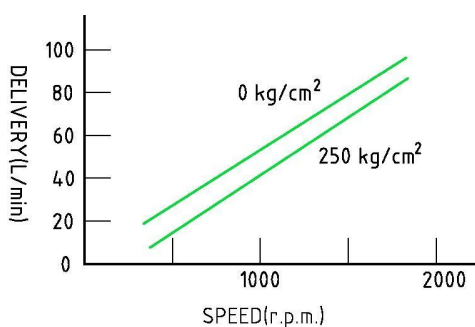


## ■ Dump Truck Pump 傾倒車用泵浦

KP-55



使用壓力 PRESSURE	MAX.	kg/cm <sup>2</sup>	250	活閥控制線活動壓力 VALVE CONTROL WIRE ACTUATING PRESSURE	kg	13
	RATED	kg/cm <sup>2</sup>	60	軸直徑 SHAFT DIAMETER	mm	22
排油量 DISPLACEMENT		cm <sup>3</sup> /rev.	55	重量 WEIGHT	kg	13
迴轉速度 SPEED	MAX.	r.p.m.	1800	使用油種類 OIL	MOBIL DTE 32 OR EQUIVALENT	
	MIN.	r.p.m.	350	迴轉方向 SHAFT ROTATION	A/反轉 (COUNTERCOLCKWISE)	

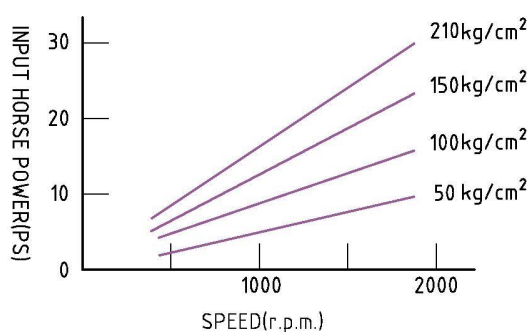
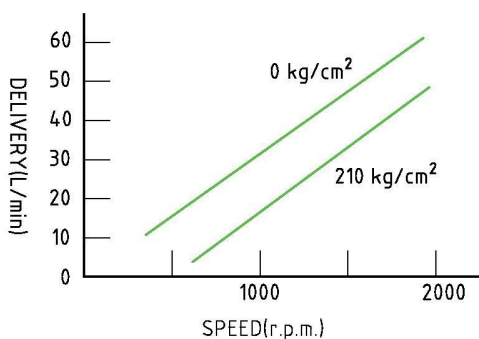


## ■ Dump Truck Pump 傾倒車用泵浦

KP-35



使用壓力 PRESSURE	MAX.	kg/cm <sup>2</sup>	210	活閥控制線活動壓力 VALVE CONTROL WIRE ACTUATING PRESSURE	kg	10
	RATED	kg/cm <sup>2</sup>	60	軸直徑 SHAFT DIAMETER	mm	22
排油量 DISPLACEMENT		cm <sup>3</sup> /rev.	34.7	重量 WEIGHT	kg	10
迴轉速度 SPEED	MAX.	r.p.m.	1800	使用油種類 OIL	MOBIL DTE 32 OR EQUIVALENT	
	MIN.	r.p.m.	350	迴轉方向 SHAFT ROTATION	A/反轉 (COUNTERCLOCKWISE)	



## 新產品 NEW PRODUCT

### ■ KP-1403-88 PNEUMATIC DUMP TRUCK PUMP KP-1403-88 氣動式傾倒車泵浦

- STANDARD EQUIPMENT (A-1~A-2)  
標準配件(A-1~A-2)



- A-1 Air Control Valve (with 5pcs fittings & 2pcs silencer)  
手動控制閥(附5個接頭及2個消音器)



- A-2 Pneumatic Hose  
氣壓軟管



## 油壓升降機

### ■ "Tentsuki Hoist" Composition

#### ■ 特色

1. 馬力大  
理想的X型支架升降設計馬力特大，更堅固。
2. 非常穩定  
X型支架在加壓後可使車體向上移動，傾倒沙土時，穩定性絕佳。
3. 保護底盤框架不受損害  
平均分配重量讓支架快速動作，並保護底盤框架不受損害。

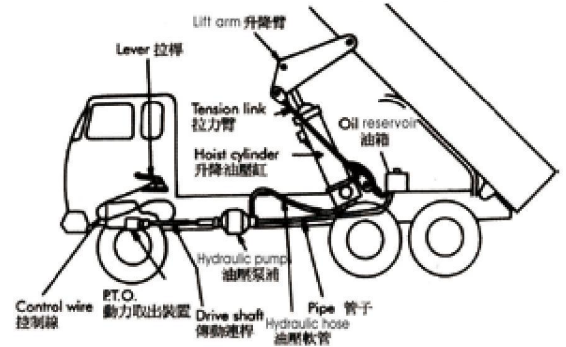
#### ■ Special features

1. Great power  
The perfect X-support hoist is designed to provide exceptional power and to be more rigid.
2. Outstanding stability  
Upon pressurizing the X-shape support, the body would be lifted up to dump out payload with outstanding stability.
3. Protect the chassis frame from damage  
Distribute the weight evenly to enable the frame work effectively and protect the chassis frame from damage.



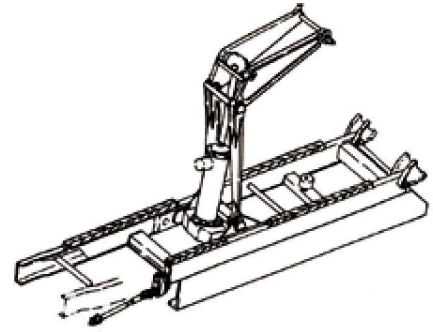
## 油壓驅動線路圖

### ■ Hydraulic Drive Assembly Diagram



## 一般安裝圖示

### ■ Typical Installation



Hoist 升降機	Model型式	KRM-140	KRM-150	KRM-160	KRM-180	KRM-220
	Working power(噸)	4.5 TON	6 TON	8 TON	12 TON	20 TON
	Cylinder bore × stroke 汽缸孔徑×行程	φ 154×450mm	φ 154×660mm	φ 160×770mm	φ 183×880mm	φ 220×880mm
	Dimension(L×W×H) 尺寸(長×寬×高)	1,190×440×330mm	1,480×470×430mm	1,770×830×400mm	1,770×610×510mm	2,020×640×550mm
	Weight重量	Approx.210 kg	Approx.280 kg	Approx.380 kg	Approx.520 kg	Approx.630 kg
	Oil tank capacity 油箱容量(公升)	5 lit.	15 lit.	34 lit.	38 lit.	40 lit.
Hydraulic pump 油壓泵浦	Model型式	KP-35A	KP-55A	KP-75A	KP-1403A/C	KP-1505A/C
	Standard revolution 標準轉速	800r.p.m.	800r.p.m.	800r.p.m.	800r.p.m.	800r.p.m.
	Displacement 排油量	34.7cm <sup>3</sup> /rev.	55 cm <sup>3</sup> /rev.	72 cm <sup>3</sup> /rev.	136.1 cm <sup>3</sup> /rev.	162cm <sup>3</sup> /rev.
	Working pressure 工作壓力	140kg/cm <sup>2</sup>	140kg/cm <sup>2</sup>	140kg/cm <sup>2</sup>	140kg/cm <sup>2</sup>	140kg/cm <sup>2</sup>
	Weight 重量	10kg	13kg	21kg	37kg	38kg

■ 油壓升降機構造

“TENTSUKI HOIST” COMPOSITION

標準配件(A-1~A-5及B)

STANDARD EQUIPMENT(A-1~A-5 AND B)



A-1 Hoist Cylinder Assembly

升降油壓缸



A-2 Lift Arm

升降臂



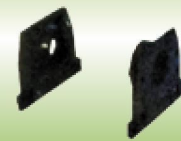
A-3 Tension Link

拉力臂及鏈環



A-4 Trunnion Bracket

樞軸支架



A-5 Body Bracket

本體支架



B. Cylinder Support Assembly

油壓缸支架組合



■ 選購配備(C~H)

OPTIONAL EQUIPMENT(C~H)

F. Drive Shaft Assembly

傳動連桿



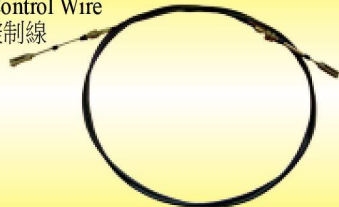
C. Hydraulic Hose

油壓軟管



G. Control Wire

控制線



D. Oil Reservoir

輔助油箱



H. Piping

管路



E. Body Hinge Assembly

本體絞鏈組合



標準配件 STANDARD EQUIPMENT:

- A. 升降機結構配件(A-1~A-5)  
Hoist Mechanism Assembly(A-1~A-5)
- B. 油壓缸支架組合  
Cylinder Support Assembly

選購配件 OPTIONAL EQUIPMENT:

- C. 油壓軟管Hydraulic Hose
- D. 輔助油箱Oil Reservoir
- E. 本體絞鏈組合Body Hinge Assembly
- F. 傳動連桿Drive Shaft Assembly
- G. 控制線Control Wire
- H. 管路Piping

Note: Shall consult with customer in regard to piping, sub-frame and power take off (PTO).

\*Specifications in this catalog are subject to change for improvement without notice.

注意：在管路、舉升支架、動力取出裝置方面需要和客戶討論。

※目錄上的規格有所改良時，不另通知。



## ■ MHR2 FLOW DIVIDER/ MHR2 同步分流閥

型式號碼表示 / MODEL NUMBER DESIGNATION

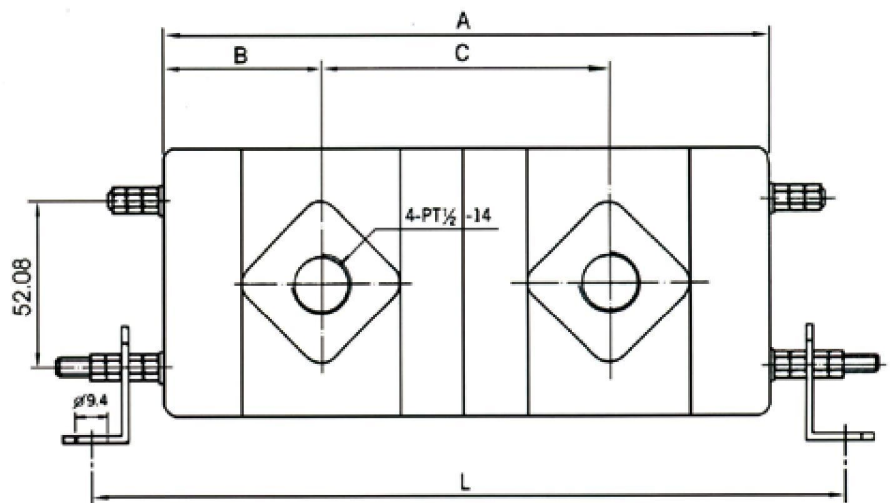
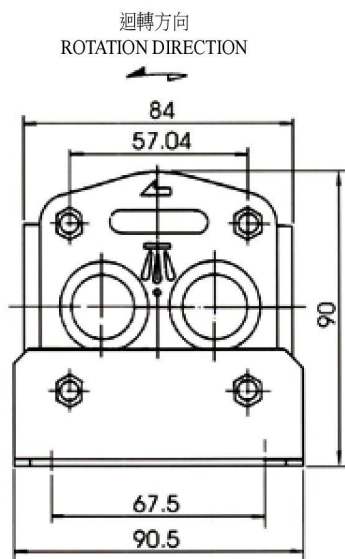
系列號碼 / SERIES	MHR2
前泵浦型號 / FRONT PUMP NUMBER	30
後泵浦型號 / REAR PUMP NUMBER	30
可左右雙向迴轉 / SHAFT ROTATION (LEFT AND RIGHT)	A C

### 用途說明及性能

特性：二連式同步油壓馬達能利用一台油壓動力單元，來同時傳動同步油壓馬達，因其內部均是相同齒徑及齒缸，利用背壓原理，使其兩邊容積產生流量補償，彼此相互牽制，輸出相同之流量及壓力，來同時帶動二支油壓缸，使其工作時，均以同一步驟進行。  
由於其均為同一軸心，故不受負荷不同而有所改變。因同步油壓馬達每個齒缸均是同軸同一工作故能使其油流量在每個齒缸是一致的，而不會產生油量不足之現象。

### Functions and Features

- Features: twin-gear synchronous hydraulic motors requires only one hydraulic power unit to drive both synchronous hydraulic motors at the same time.
- We use the back pressure to let the both parts have compensation in discharge flow. The two parts can restrain each other, and output the same discharge flow and pressure to drive both oil cylinders by the same step because they are driven by the same shaft.
- Each chamber of the synchronous oil motor works by a same shaft and the same working situation, so the discharge of each chamber is the same, and the shortage of oil won't occur. There won't be any change under different load, because they are driven by the same shaft.



型 式 MODEL	流量 DISPLACEMENT (SINGLE) (cm <sup>3</sup> /rev.)	最高使用壓力 MAX. PRESSURE (kg/cm <sup>2</sup> )	二連式迴轉容積 DISPLACEMENT (DOUBLE) (cm <sup>3</sup> /rev.)	迴轉數 SPEED (r.p.m.)		長度 DIMENSION (mm)			
				最高 MAX.	最低 MIN.	A	B	C	L
MHR2-15-15AC	5.27	140	10.54	2500	600	187.3	48.5	89.15	238.8
MHR2-20-20AC	7.05	140	14.1	2500	600	202.5	52.5	96.75	254
MHR2-25-25AC	8.81	140	17.26	2500	600	202.5	52.5	96.75	254
MHR2-30-30AC	10.56	140	21.12	2500	600	202.5	52.5	96.75	254



## ■ SHR1 SERIES/ SHR1 系列

型式號碼表示 / MODEL NUMBER DESIGNATION

系列號碼 / SERIES	SHR1
泵浦型號 / PUMP NUMBER	5
迴轉方向 / SHAFT ROTATION	A/C

A:左迴轉 / COUNTERCLOCKWISE  
C:右迴轉 / CLOCKWISE

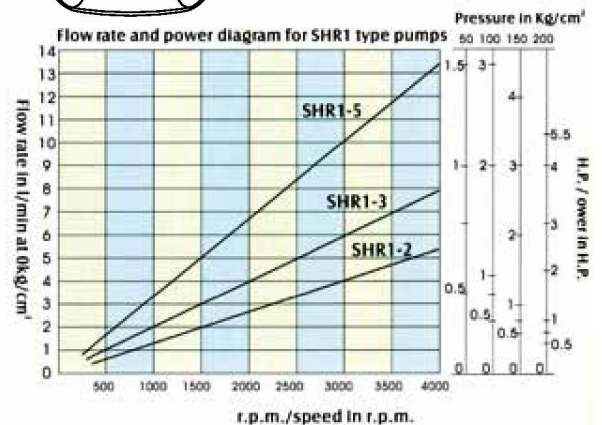
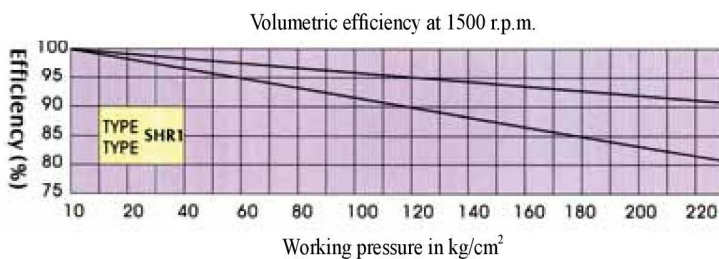
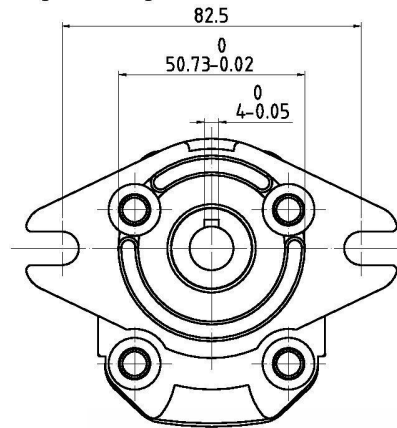
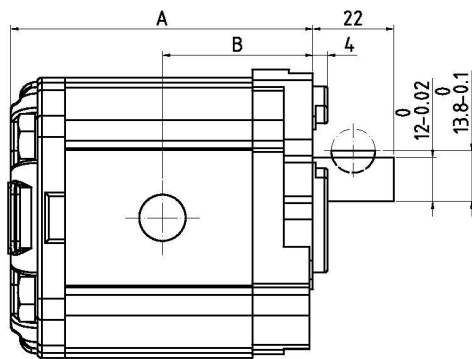
### 用途說明及性能

低噪音，高效率，馬力省，零件少，易於維護及保養

用途：磨床，裁斷機，彎管機，小型單能機壓床，小型油壓單元適用機械。

### Functions and Features

- ▶ Mass-produced SHR1 pumps utilizing the more advanced technology have high efficiency, high working pressure, low noise, and use less parts, easy to maintain and service.
- ▶ SHR 1 pumps have special system for balancing the loads on bushings, for automatic taking up of end plays, and for reducing the radial thrust.
- ▶ Application: grinding machine, radial drilling machine, shear, brake and tube bending machine, small press and power unit.



型 式 MODEL	流量 DISPLACEMENT (cm <sup>3</sup> /rev.)	最高使用壓力 MAX. PRESSURE (kg/cm <sup>2</sup> )	持續使用壓力 RATED PRESSURE (kg/cm <sup>2</sup> )	迴轉數 SPEED (r.p.m.)		出入口管徑 DIAMETER		重量 WEIGHT (kg)	長度 DIMENSION (mm)	
				最高 MAX.	最低 MIN.	入口 INLET	出口 OUTLET		A	B
SHR1-2	1.5	175	140	3000	500	PT 3/8	PT 1/4	0.8	72	40
SHR1-3	2	175	140	3000	500	PT 3/8	PT 1/4	0.9	72	40
SHR1-5	3.5	175	140	3000	500	PT 3/8	PT 1/4	1.3	84	40



## ■ HR3 SERIES/HR3系列

型式號碼表示 / MODEL NUMBER DESIGNATION

系列號碼 / SERIES	HR3
泵浦型號 / PUMP NUMBER	3100
迴轉方向 / SHAFT ROTATION	A/C

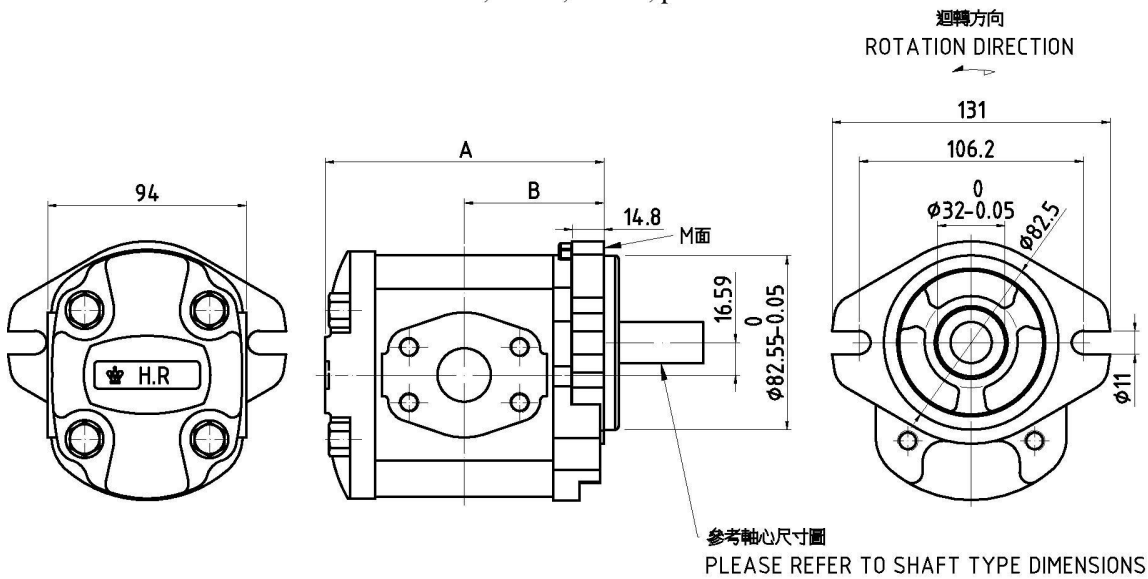
A:左迴轉 / COUNTERCLOCKWISE  
C:右迴轉 / CLOCKWISE

### 用途說明及性能 Functions and Features

軸心分直心與齒心二種，出入油口分PT牙式與法蘭式

用途：農業機械，產業機械，塑膠機械，堆高機，拖網機，車輛，曳引機，建設機械工作母機，油壓動力單元

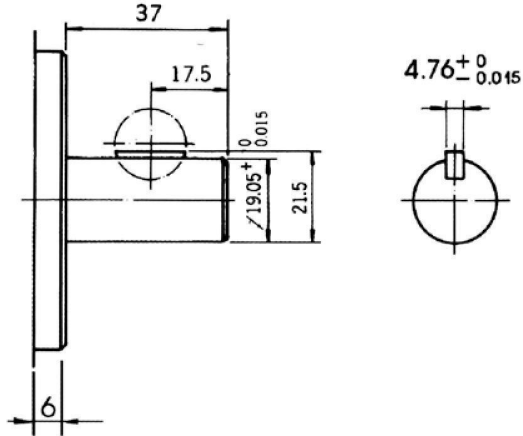
- ▶ Shaft type: straight shaft or teeth shaft
- ▶ Inlet/outlet: pt type or flange type.
- ▶ Mass-produced HR3 pumps utilizing the more advanced technology have high efficiency, high working pressure, low noise, and use less parts, easy to maintain and service. HR3 pumps can be mounted on any position owing to the self-priming design.
- ▶ Application : agricultural machine, building machine, production machine, plastic machine, tractor, forklift, power unit.



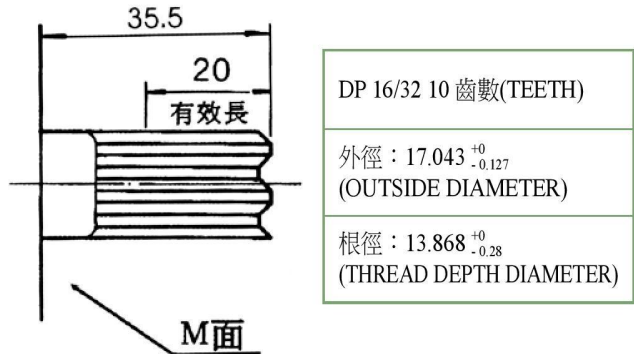
型式 MODEL	流量 DISPLACEMENT (cm <sup>3</sup> /rev.)	最高使用壓力 MAX. PRESSURE (kg/cm <sup>2</sup> )	持續使用壓力 RATED PRESSURE (kg/cm <sup>2</sup> )	迴轉數 SPEED (r.p.m.)		出入口管徑 DIAMETER		重量 WEIGHT (kg)	長度 DIMENSION (mm)		出入 油孔 INLET/ OUTLET TYPE
				最高 MAX.	最低 MIN.	入口 INLET	出口 OUTLET		A	B	
HR3-3044	14.3	210	175	3500	500	PT 3/4	PT 1/2	3.3	119.2	60.1	Y
HR3-3052	16.8	210	175	3500	500	PT 3/4	PT 1/2	3.4	122.5	61.7	
HR3-3060	19.2	210	175	3500	500	PT 3/4	PT 1/2	3.5	125.4	63.2	Y
HR3-3072	22.9	175	125	3500	500	PT 1	PT 3/4	3.6	130	65.5	
HR3-3084	26.5	160	125	3500	500	PT 1	PT 3/4	3.7	132	66.5	
HR3-3100	33.3	140	125	3500	500	PT 1	PT 3/4	3.8	132	66.5	

## 軸心尺寸圖 / SHAFT TYPE

**S** (直心/STRAIGHT SHAFT)



**K** (齒心/TEETH SHAFT)



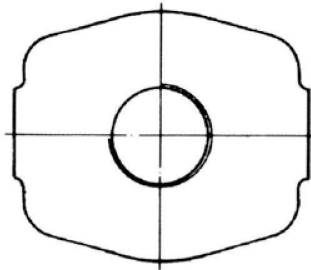
DP 16/32 10 齒數(TEETH)

外徑：17.043<sup>+0</sup><sub>-0.127</sub>  
(OUTSIDE DIAMETER)

根徑：13.868<sup>+0</sup><sub>-0.28</sub>  
(THREAD DEPTH DIAMETER)

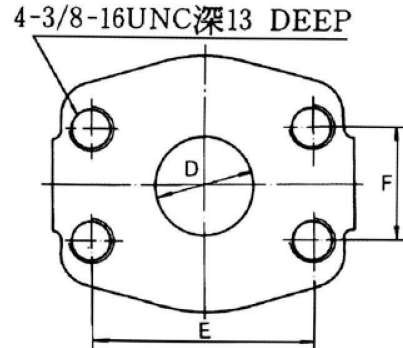
## 出入油口尺寸圖 / INLET & OUTLET TYPE

**Y** (PT牙式/PT TYPE)



型號 MODEL	入油口 INLET	出油口 OUTLET
3044~3060	PT 3/4	PT 1/2
3072~3100	PT 1	PT 3/4

**F** (法蘭式/FLANGE TYPE)



尺寸 DIMENSION (mm)	入油口 INLET	出油口 OUTLET
D	ø25.4	ø18
E	52.4	47.6
F	26.2	22.2

■ HR3



## ■ HR3 DOUBLE GEAR PUMPS/ HR3雙連式

型式號碼表示 / MODEL NUMBER DESIGNATION

系列號碼 / SERIES	HR3
前泵浦型號 / FRONT PUMP NUMBER	3100
後泵浦型號 / REAR PUMP NUMBER	3044
迴轉方向 / SHAFT ROTATION	A/C

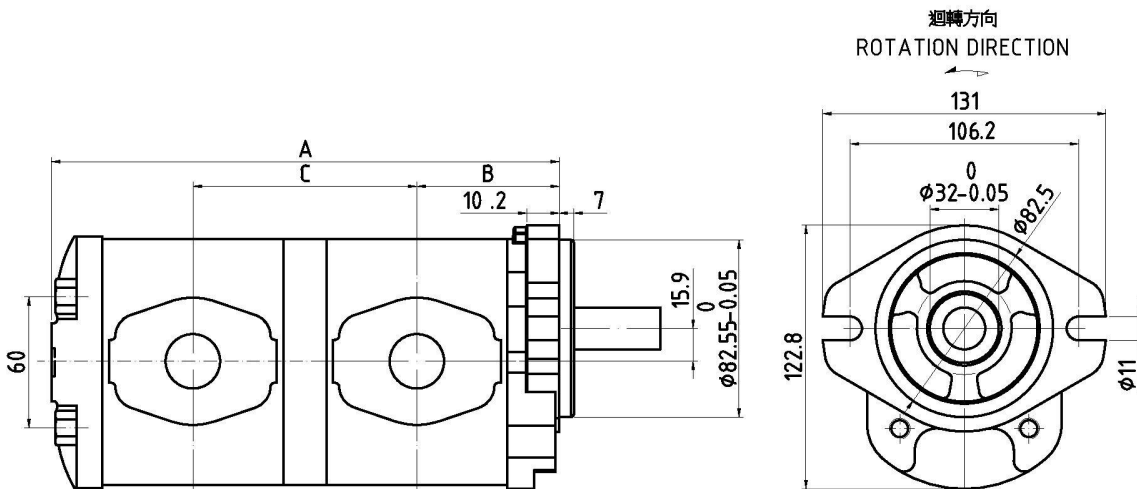
A:左迴轉 / COUNTERCLOCKWISE  
C:右迴轉 / CLOCKWISE

### 用途說明及性能

特性：以一台電動馬達，同時帶動二連式泵浦而能應用機械兩種或兩種以上不同的工作壓力。可採用雙段式同時使用，亦可個別使用依實際需要而定。  
用途：建設機械，小型挖土機，產業機械，雙油路油壓單元組合，高低壓油壓單元，車輛油壓動力方向盤...等。

### Functions and Features

- ▶ A single electrical motor could run a twin-gear pump and can be used in the machinery with two or more different working pressure. The two parts can be used at the same time or individually as needed.
- ▶ Application: building machinery, small excavator, industrial machinery, hydraulic unit assembly with double outlets, hydraulic units with high and low pressure, hydraulic power steering of vehicles, etc.



※軸心尺寸請參考HR3系列

※Shaft type and dimensions please refer to the series HR3

型 式MODEL	長度(mm) DIMENSION			重量(kg) WEIGHT
	A	B	C	
HR3-3044-3044	221.0	66.8	95.0	6.1
HR3-3052-3044	224.2	68.4	96.6	6.2
HR3-3052-3052	227.4	68.4	98.2	6.3
HR3-3060-3044	227.2	70.0	98.1	6.3
HR3-3060-3052	230.4	70.0	99.7	6.4
HR3-3060-3060	233.4	70.0	101.2	6.5
HR3-3072-3044	231.8	72.2	100.4	6.4
HR3-3072-3052	235.0	72.2	102.0	6.5
HR3-3072-3060	238.0	72.2	103.5	6.6
HR3-3072-3072	242.6	72.2	105.8	6.7
型 式MODEL	長度(mm) DIMENSION			重量(kg) WEIGHT
	A	B	C	
HR3-3084-3044	233.8	73.2	101.4	6.5
HR3-3084-3052	237.0	73.2	103.0	6.6
HR3-3084-3060	240.0	73.2	104.5	6.7
HR3-3084-3072	244.6	73.2	106.8	6.8
HR3-3084-3084	246.6	73.2	107.8	6.9
HR3-3100-3044	233.8	73.2	101.4	6.5
HR3-3100-3052	237.0	73.2	103.0	6.6
HR3-3100-3060	240.0	73.2	104.5	6.7
HR3-3100-3072	244.6	73.2	106.8	6.8
HR3-3100-3084	246.6	73.2	107.8	6.9
HR3-3100-3100	246.6	73.2	107.8	7.0



## GP1 SERIES/ GP1 系列

型式號碼表示 / MODEL NUMBER DESIGNATION

系列號碼 / SERIES	GP1
泵浦型號 / PUMP NUMBER	35
迴轉方向 / SHAFT ROTATION	A/C

A:左迴轉 / COUNTERCLOCKWISE

C:右迴轉 / CLOCKWISE

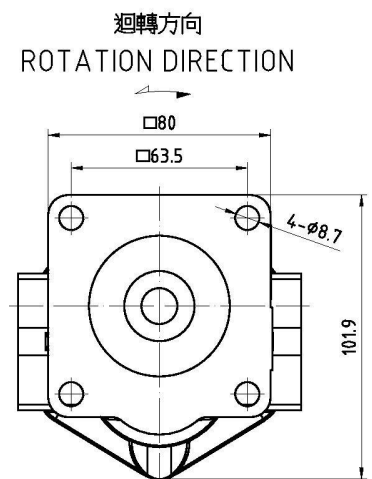
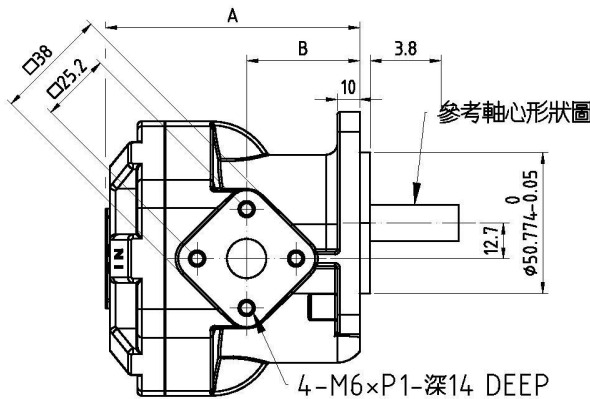
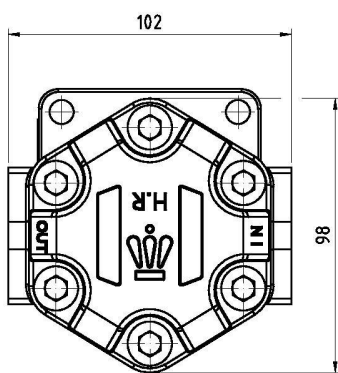
### 用途說明及性能

### Functions and Features

軸心之形式有直心 $\phi 13\text{mm}$ ，直心 $\phi 12.5\text{mm}$ ，齒心、斜心掛牙，共四種。

用途：適用於農業機械，車輪，產業機械，曳引機，油壓機械，油壓動力單元...等。

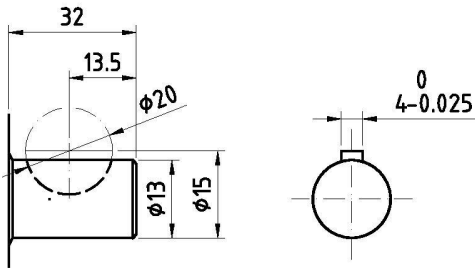
- ▶ Shaft type: straight shaft  $\phi 13\text{mm}$ , straight shaft  $\phi 12.5\text{mm}$ , teeth shaft, or oblique shaft cogged.
- ▶ GP1 pumps can be mounted on any position owing to the self-priming design.
- ▶ Application: agricultural machine, tractor, hydraulic power unit, etc.



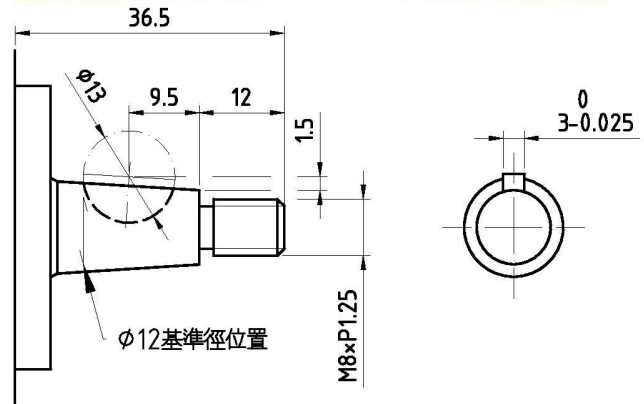
型式 MODEL	流量 DISPLACEMENT ( $\text{cm}^3/\text{rev.}$ )	最高使用壓力 MAX. PRESSURE ( $\text{kg}/\text{cm}^2$ )	持續使用壓力 RATED PRESSURE ( $\text{kg}/\text{cm}^2$ )	迴轉數 SPEED (r.p.m.)		出入口管徑 DIAMETER		重量 WEIGHT (kg)	長度 DIMENSION (mm)	
				最高 MAX.	最低 MIN.	入口 INLET	出口 OUTLET		A	B
GP1-10	3.52	210	175	3000	500	PT 1/2	PT 3/8	1.4	86.5	44.5
GP1-15	5.27	210	175	3000	500	PT 1/2	PT 3/8	1.4	86.5	44.5
GP1-20	7.05	210	175	3000	500	PT 1/2	PT 3/8	1.6	94	44.5
GP1-25	8.81	210	175	3000	500	PT 1/2	PT 3/8	1.6	94	44.5
GP1-30	10.56	140	125	3000	500	PT 3/4	PT 1/2	1.7	94	44.5
GP1-35	12.31	140	125	3000	500	PT 3/4	PT 1/2	1.7	94	44.5

## 軸心尺寸圖 / SHAFT TYPE

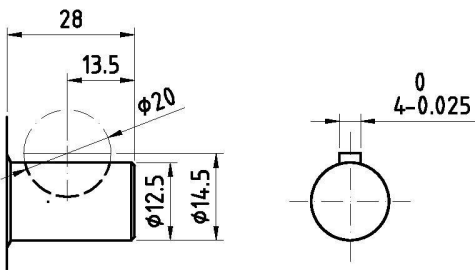
**S** (直心/STRAIGHT SHAFT)



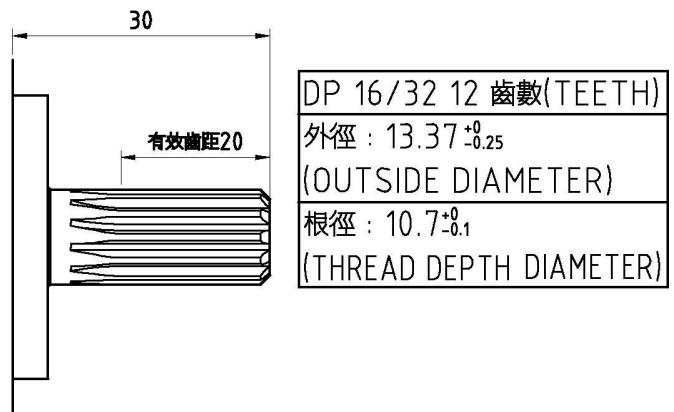
**L** (斜心掛牙/Oblique shaft cogged)



**PA** (軸心為φ12.5m/m /Just shaft is φ12.5m/m)

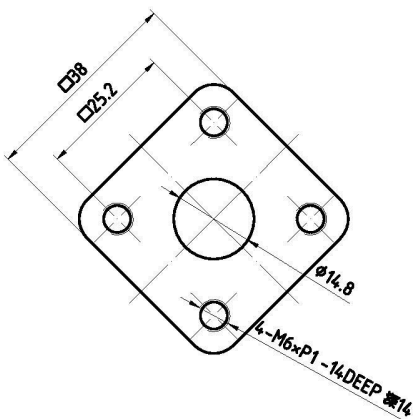


**K** (齒心/TEETH SHAFT)

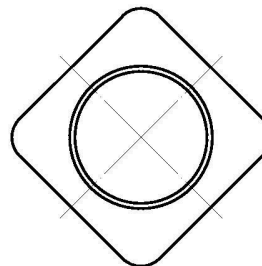


## 出入油口尺寸圖 / INLET & OUTLET TYPE

**F** (法蘭式/FLANGE TYPE)



**Y** (PT牙式/PT TYPE)



	入油口 INLET	出油口 OUTLET
GP1	PT 1/2	PT 3/8

■ GP1



## GP2 SERIES/ GP2系列

型式號碼表示 / MODEL NUMBER DESIGNATION

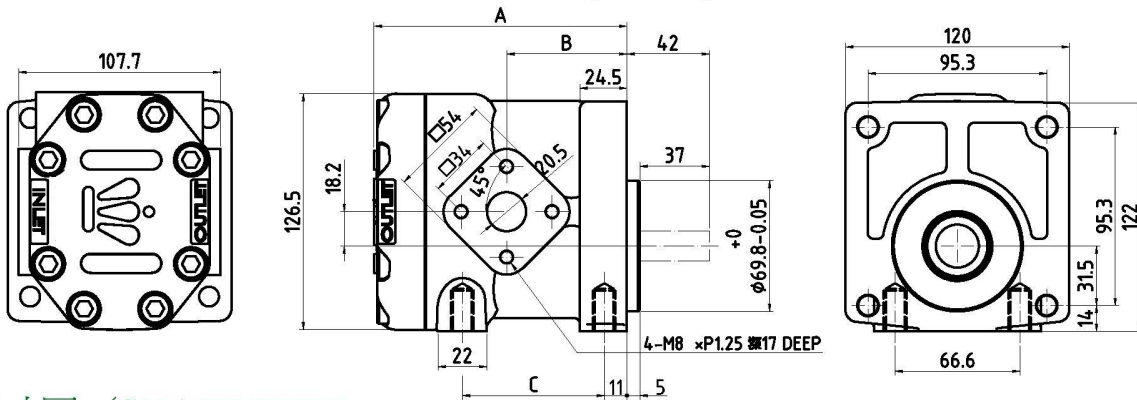
系列號碼 / SERIES	GP2
泵浦型號 / PUMP NUMBER	85
迴轉方向 / SHAFT ROTATION	A/C

A:左迴轉 / COUNTERCLOCKWISE  
C:右迴轉 / CLOCKWISE

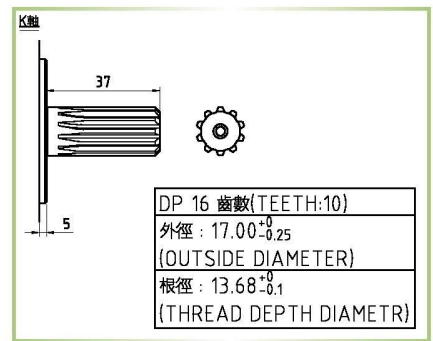
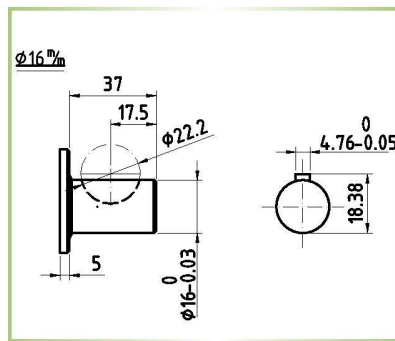
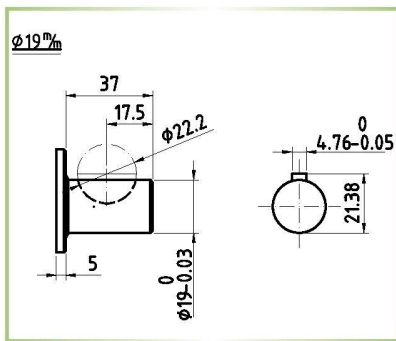
### 用途說明及性能 / Functions and Features

此型式專為重力機械設計，直心之軸徑可有 $\phi 16\text{mm}$ 及 $\phi 19\text{mm}$ 兩種和齒心  
用途:建設機械，堆高機，曳引機，農業機械，產業車輛，油壓動力單元...等.

- ▶ Mass-produced GP2 pumps utilizing the more advanced technology have high efficiency, high working pressure, low noise, and use less parts, easy to maintain and service. GP2 pumps have special systems for balancing the loads on bushings, for automatic taking up of end plays, and for reducing the radial thrust.
- ▶ Pumps of this type can be mounted on any position owing to their easily self-priming.
- ▶ They are specially designed for heavy machinery. The straight shaft comes in two different sizes:  $\phi 16\text{mm}$  and  $\phi 19\text{mm}$
- ▶ Application: building machine, hydraulic crane, tractor, agricultural machine, industrial vehicles, power unit, etc.



### 軸心尺寸圖 / SHAFT TYPE



型 式 MODEL	流量 DISPLACEMENT ( $\text{cm}^3/\text{rev.}$ )	最高使用壓力 MAX. PRESSURE ( $\text{kg}/\text{cm}^2$ )	持續使用壓力 RATED PRESSURE ( $\text{kg}/\text{cm}^2$ )	迴轉數 SPEED (r.p.m.)		重量 WEIGHT (kg)	長度 DIMENSION (mm)		
				最高 MAX.	最低 MIN.		A	B	C
GP2-45	15.3	175	140	3000	500	3.8	118.5	58	76.2
GP2-65	21.7	175	140	3000	500	4.3	134	62.5	76.2
GP2-85	28.5	140	125	3000	500	4.3	134	62.5	76.2
GP2-85ABK	28.5	140	125	3000	500	4.3	134	62.5	76.2

## HR5-4210



### ■ CHARGING PUMP FOR HITACHI EXCAVATOR 日立挖土機用輔助泵浦

產品料號 PART NO.: 307002-4210	GENUINE PART NO.: 4181700
迴轉方向 SHAFT ROTATION: 右迴轉 RK/CLOCKWISE	
流量 DISPLACEMENT: 16.8 cm <sup>3</sup> /rev.	重量 WEIGHT: 2.3 kg
使用壓力 PRESSURE: MAX.: 175 kg/cm <sup>2</sup> RATED: 140 kg/cm <sup>2</sup>	
迴轉速度 SPEED: MAX.: 3000 r.p.m. MIN.: 600 r.p.m.	
適用機種 USE FOR MODEL: EX200-1, EX200K-1, EX220-1, EX270-1, EX300-1, EX400-1, ZX200-3, ZX330-1	

## HR5-4650



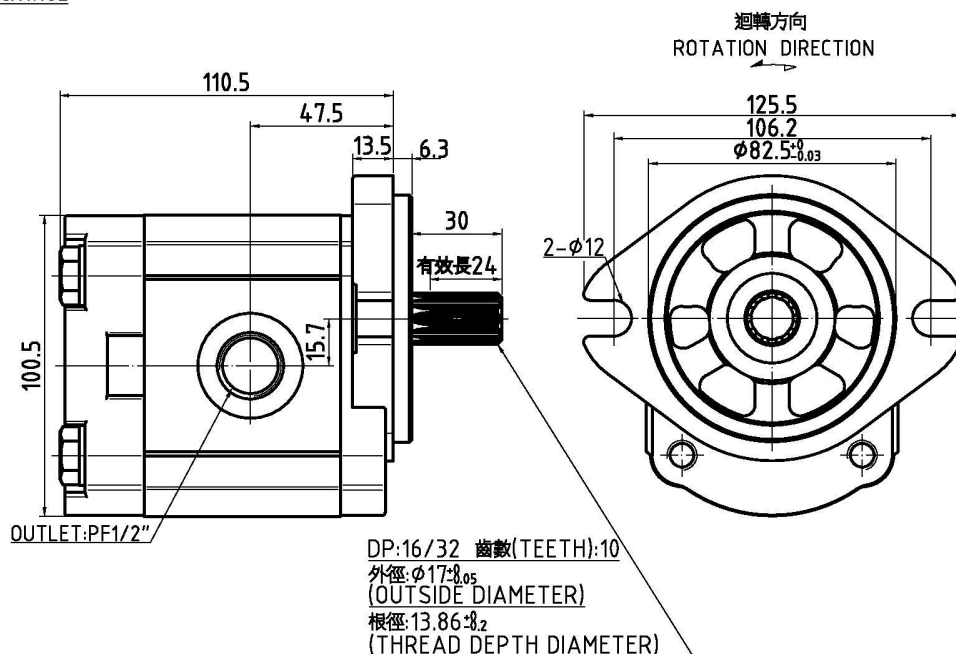
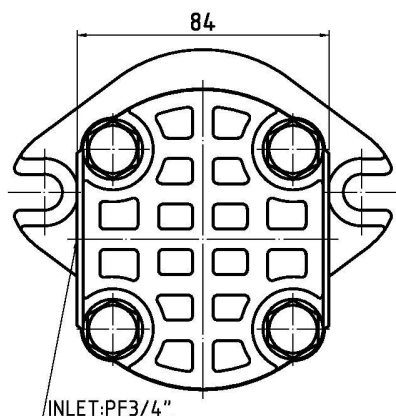
### ■ CHARGING PUMP FOR HITACHI EXCAVATOR 日立挖土機用輔助泵浦

產品料號 PART NO.: 307002-4650	GENUINE PART NO.: 4276918
迴轉方向 SHAFT ROTATION: 左迴轉 LK/ COUNTERCLOCKWISE	
流量 DISPLACEMENT: 16.8 cm <sup>3</sup> /rev.	重量 WEIGHT: 2.3 kg
使用壓力 PRESSURE: MAX.: 175 kg/cm <sup>2</sup> RATED: 140 kg/cm <sup>2</sup>	
迴轉速度 SPEED: MAX.: 3000 r.p.m. MIN.: 600 r.p.m.	
適用機種 USE FOR MODEL: EX100-3, EX100-5, EX100M-5, EX110-5, EX120-3, EX120-5, EX120-5HG, EX120-5LV, EX120-5X, EX120-5Z, EX130H-5, EX120K-5, EX200-5HG, EX200-5LV, EX200-5X, EX200-5Z, EX200K-3, EX200LC-5, EX800H-5, EX210H-5, EX210K-5, EX220-3, EX220-5, EX230-5, EX230H-5, EX230LC-5, EX270-5, EX270LC-5, EX280H-5, EX400-3, EX400-5, EX450H-5, EX450LC-5, EX750-5, EX230K-5	

## HR5-RK/LK

迴轉方向 / SHAFT ROTATION  
RK: 右迴轉 / CLOCKWISE  
LK: 左迴轉 / COUNTER-CLOCKWISE

系列號碼 / SERIES

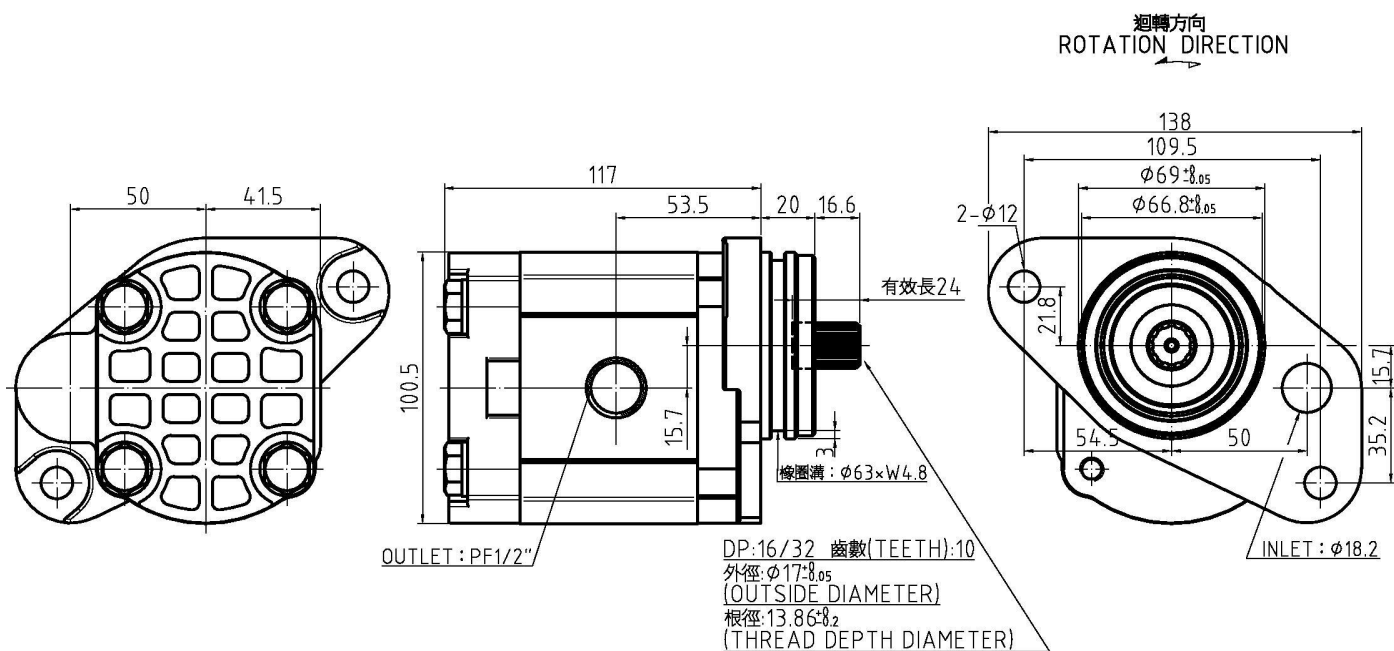


## HR5-4640



## ■ CHARGING PUMP FOR HITACHI EXCAVATOR 日立挖土機用輔助泵浦

產品料號 PART NO.: 307002-4640	GENUINE PART NO.: 4255303
迴轉方向 SHAFT ROTATION: 左迴轉 LK/ COUNTERCLOCKWISE	
流量 DISPLACEMENT: 16.8 cm <sup>3</sup> /rev.	重量 WEIGHT: 2.5 kg
使用壓力 PRESSURE: MAX.: 175 kg/cm <sup>2</sup> RATED: 140 kg/cm <sup>2</sup>	
迴轉速度 SPEED: MAX.: 3000 r.p.m. MIN.: 600 r.p.m.	
適用機種 USE FOR MODEL: EX100-2, EX100M-2, EX120-2, EX200-2, EX200K-2, EX220-2	



## ■ CHARGING PUMP FOR HITACHI SMALL EXCAVATOR 日立小型挖土機用輔助泵浦



型號 MODEL: EX30-1
流量 DISPLACEMENT: 5.4 cm <sup>3</sup> /rev.
重量 WEIGHT: 0.7 kg
適用機種 USE FOR MODEL: EX30-1, EX35-1, AX30-1

## ■ CHARGING PUMP FOR HITACHI SMALL EXCAVATOR 日立小型挖土機用輔助泵浦



型號 MODEL: EX30-2
流量 DISPLACEMENT: 5.5 cm <sup>3</sup> /rev.
重量 WEIGHT: 0.4 kg
適用機種 USE FOR MODEL: EX30-2, EX35-2, AX30-2

### CGP5-33



## ■ STEERING PUMP FOR KOMATSU BULLDOZER 小松推土機用轉向泵浦

產品料號 PART NO.: 07430-72203

迴轉方向 SHAFT ROTATION: 右迴轉 CLOCKWISE

流量 DISPLACEMENT: 33 cm<sup>3</sup>/rev. 重量 WEIGHT: 9.5 kg

迴轉速度 SPEED: MAX.: 3200 r.p.m. MIN.: 600 r.p.m.

適用機種 USE FOR MODEL:

D65A-6, D65A-8, D65E-8, D65P-7, D65P-8, D65S-6, D65S-7, D65S-8, D75A-1

### CGP5-42



## ■ TORQFLOW PUMP FOR KOMATSU BULLDOZER 小松推土機用變速泵浦

產品料號 PART NO.: 07432-71203

迴轉方向 SHAFT ROTATION: 左迴轉 COUNTERCLOCKWISE

流量 DISPLACEMENT: 42 cm<sup>3</sup>/rev. 重量 WEIGHT: 10 kg

迴轉速度 SPEED: MAX.: 3200 r.p.m. MIN.: 600 r.p.m.

適用機種 USE FOR MODEL:

D65A-6, D65A-8, D65E-8, D65P-7, D65P-8, D65S-6, D65S-7, D65S-8, D75A-1,  
D80A-18, D80E-18, D80P-18, D85A-18, D85A-21, D85A-21B, D85E-18, D85E-21,  
D85P-18, D85P-21, D95S-1, D95S-2, GD605A-1

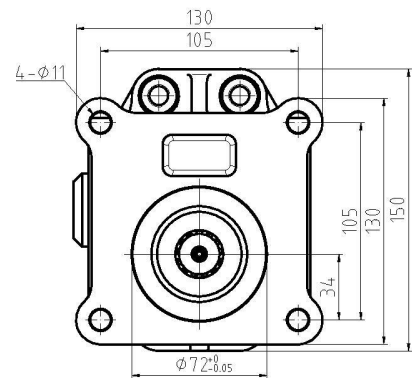
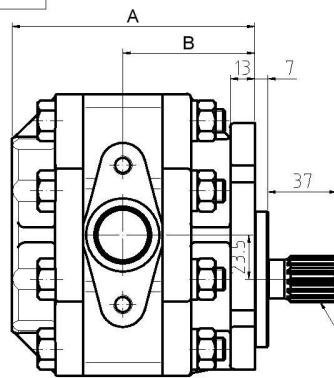
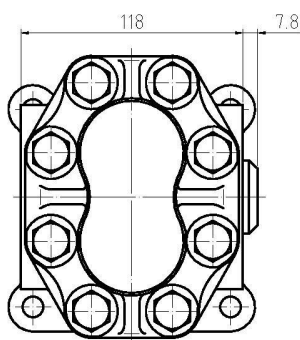
CGP5-42-A

CGP5-33-C

迴轉方向 / SHAFT ROTATION  
C: 右迴轉 / CLOCKWISE  
A: 左迴轉 / COUNTER-CLOCKWISE

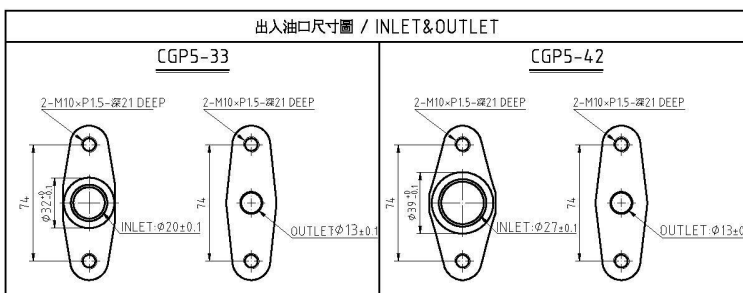
泵浦型號 / DELIVERY NUMBER

系列號碼 / SERIES



M: 1.72 齒數 (TEETH): 13  
外徑  $\phi 24.50^{+0.03}$   
(OUTSIDE DIAMETER)  
根徑  $\phi 21.5^{+0.2}$   
(THREAD DEPTH DIAMETER)

出入口尺寸圖 / INLET & OUTLET



型式 MODEL	長度(mm) DIMENSION	
	A	B
CGP5-42	129.3	70.2
CGP5-33	120.3	65.7

## GCP-40



### ■ SCAVENGE PUMP FOR KOMATSU BULLDOZER 小松推土機用循環油泵浦

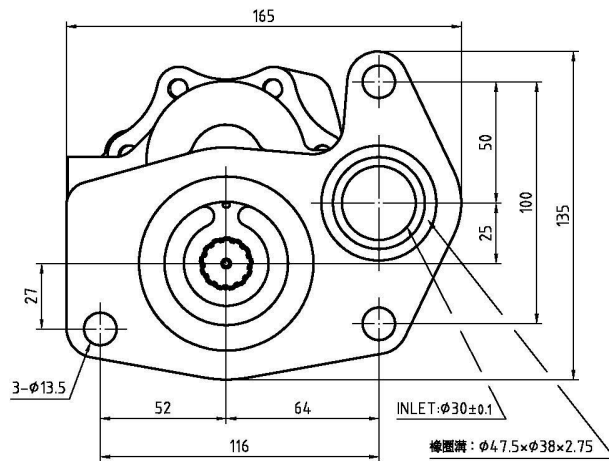
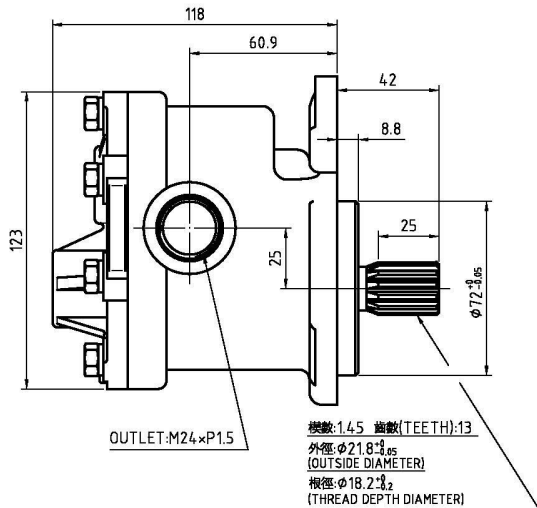
產品料號 PART NO.: 14X-49-11600

流量 DISPLACEMENT: 66.4 cm<sup>3</sup>/rev.

重量 WEIGHT: 5.5 kg

迴轉速度 SPEED: MAX.: 3200 r.p.m. MIN.: 600 r.p.m.

D64E-12, D65E-12-C, D65E-12-E, D65EX-12, D65EX-12-CH, D65EX-12-E, D65P-12, D65P-12-E, D65PX-12, D65PX-12-E, D85E-SS-2A-E, D85E-SS-2-E, S6D114E



## PC100-5



### ■ CHARGING PUMP FOR KOMATSU EXCAVATOR 小松挖土機用輔助泵浦

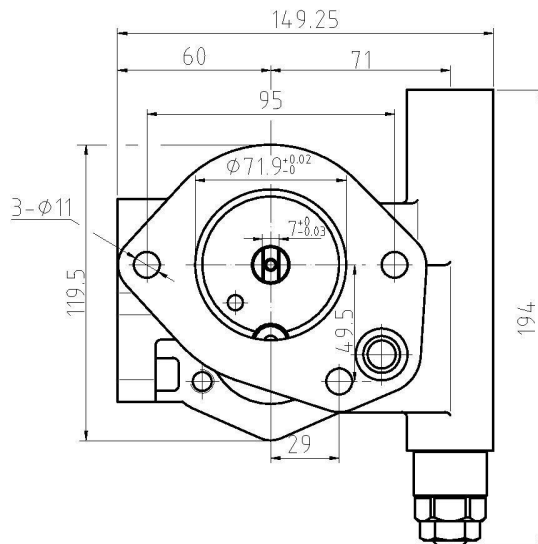
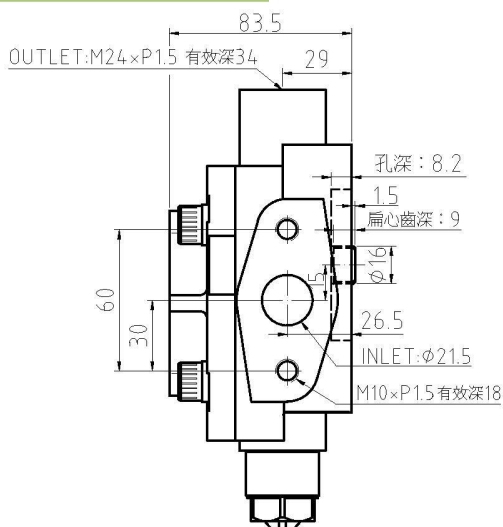
產品料號 PART NO.: 704-24-26401

流量 DISPLACEMENT: 16.4 cm<sup>3</sup>/rev.

重量 WEIGHT: 5.3 kg

適用機種 USE FOR MODEL:

PC100-3, PC100L-3, PC100-5, PC100L-5, PC120-3, PC120-5, PC150HD-5, PC240-3, PF3-1, PF3W-1



### PC200-3



## ■ CHARGING PUMP FOR KOMATSU EXCAVATOR 小松挖土機用輔助泵浦

產品料號 PART NO.: 704-24-28200

流量 DISPLACEMENT: 24.4 cm<sup>3</sup>/rev.

重量 WEIGHT: 7.5 kg

迴轉速度 SPEED: MAX.: 3200 r.p.m. MIN.: 800 r.p.m.

適用機種 USE FOR MODEL:

PC200-3

### PC200-5



## ■ CHARGING PUMP FOR KOMATSU EXCAVATOR 小松挖土機用輔助泵浦

產品料號 PART NO.: 704-24-28230

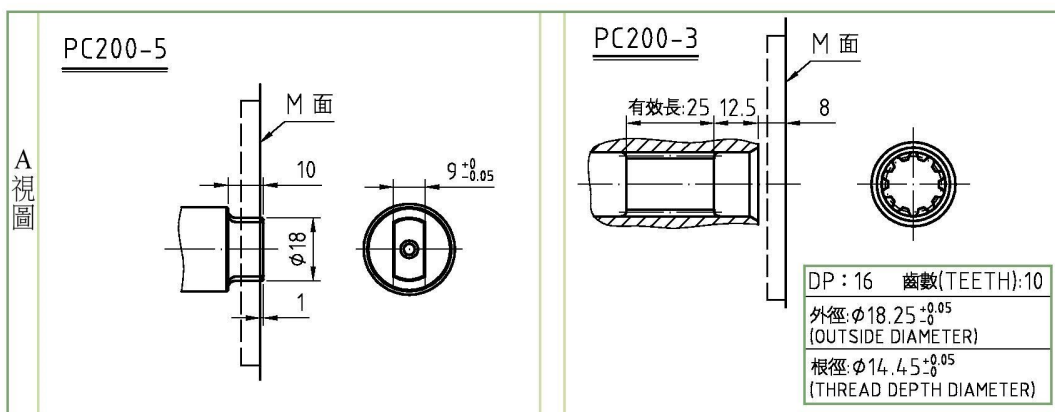
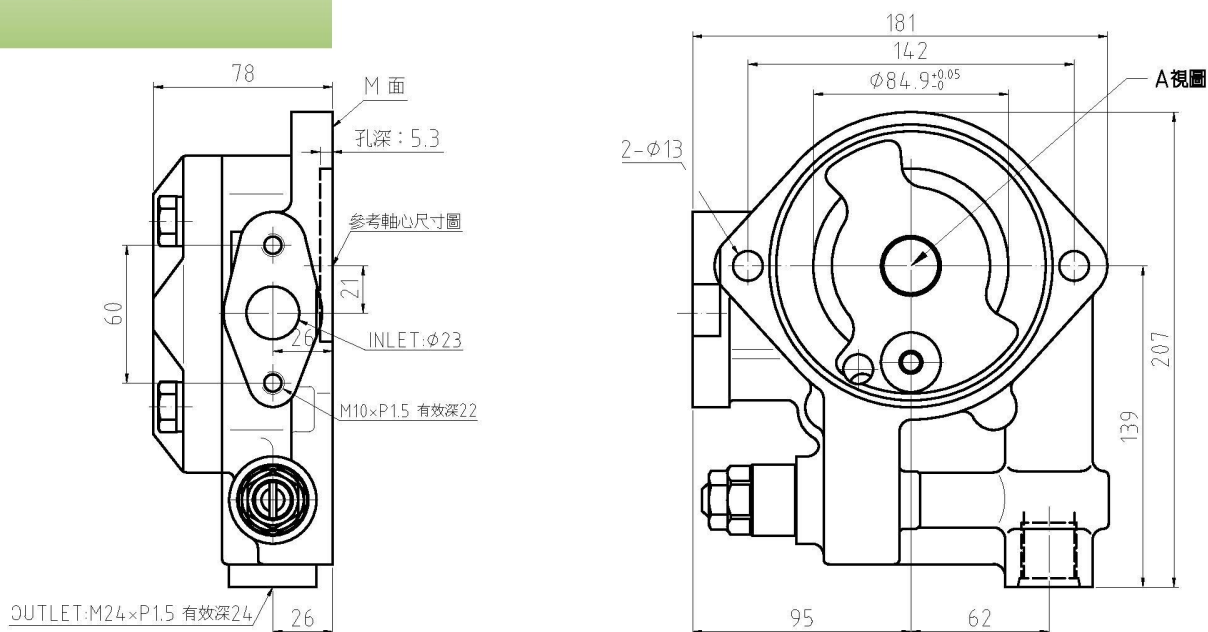
流量 DISPLACEMENT: 24.4 cm<sup>3</sup>/rev.

重量 WEIGHT: 7.5 kg

迴轉速度 SPEED: MAX.: 3200 r.p.m. MIN.: 800 r.p.m.

適用機種 USE FOR MODEL:

PC200-5



## PC200-6



### ■ CHARGING PUMP FOR KOMATSU EXCAVATOR 小松挖土機用輔助泵浦

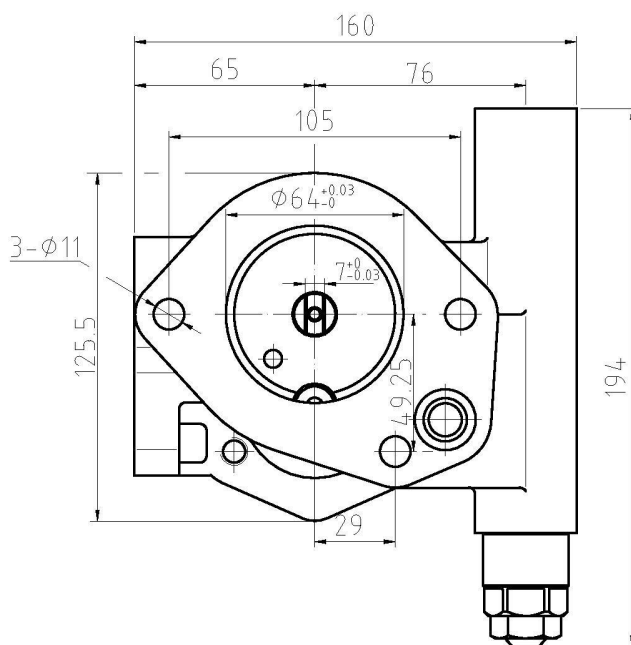
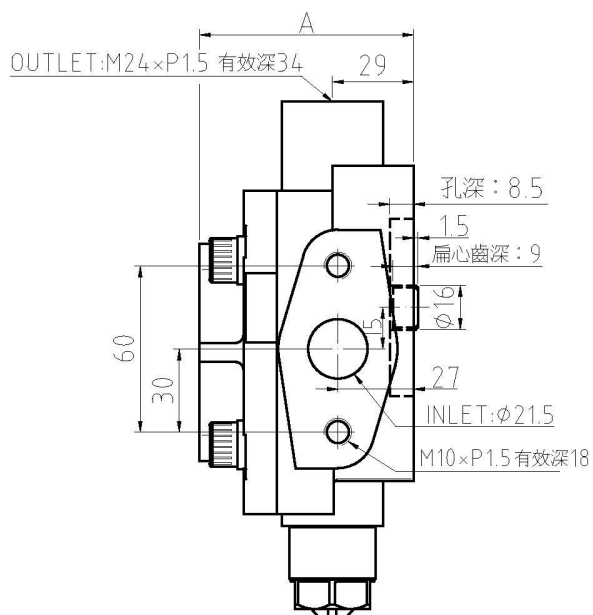
產品料號 PART NO.: 704-24-24420	
流量 DISPLACEMENT: 16.4 cm <sup>3</sup> /rev.	重量 WEIGHT: 5.3 kg
使用壓力 PRESSURE: MAX.: 36 kg/cm <sup>2</sup> RATED: 30 kg/cm <sup>2</sup>	
迴轉速度 SPEED: MAX.: 3200 r.p.m. MIN.: 800 r.p.m.	
適用機種 USE FOR MODEL: PC200-6	

## PC300-6



### ■ CHARGING PUMP FOR KOMATSU EXCAVATOR 小松挖土機用輔助泵浦

產品料號 PART NO.: 704-24-26430	
流量 DISPLACEMENT: 21.4 cm <sup>3</sup> /rev.	重量 WEIGHT: 5.5 kg
使用壓力 PRESSURE: MAX.: 36 kg/cm <sup>2</sup> RATED: 30 kg/cm <sup>2</sup>	
迴轉速度 SPEED: MAX.: 3200 r.p.m. MIN.: 800 r.p.m.	
適用機種 USE FOR MODEL: PC300-6	



型式 MODEL	長度(mm) DIMENSION
	A
PC200-6	77.5
PC300-6	84

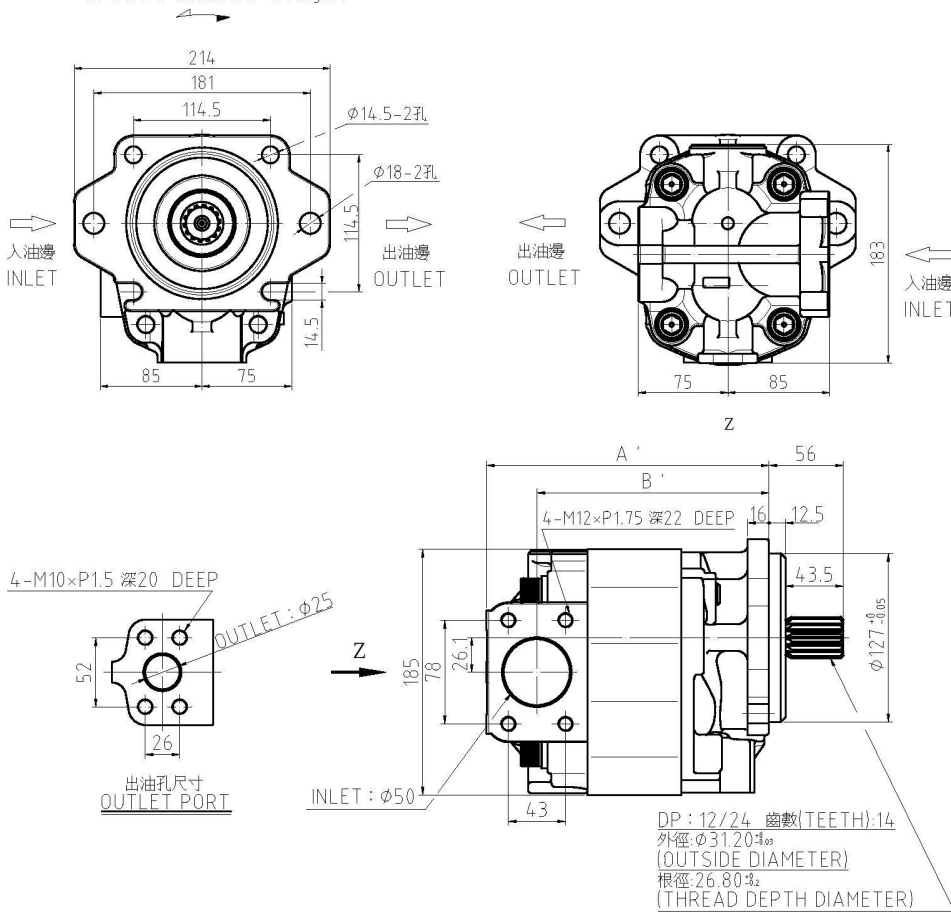
## SAR3-100



## GEAR PUMP FOR KOMATSU LOADER (SINGLE) 小松鏟土機用齒輪泵浦(單連)

產品料號 KOMATSU PART NO.	型號 HYDROME MODEL	迴轉方式 SHAFT ROTATION	KOMATSU適用機種 USE FOR KOMATSU MODEL
705-12-38010	SAR3-080	R: CLOCKWISE 右迴轉 L: COUNTERCLOCKWISE 左迴轉	WA470, WA500, HD465-2/3/5, etc.
705-11-38010	SAL3-080		
705-12-40010	SAR3-100		
705-11-40010	SAL3-100		
705-22-40070	SAR3-100-13T		

迴轉方向：右  
ROTATION DIRECTION: CW(right)



PART NO	MODEL
705-22-40070	SA3-100-13T
M:1.45 齒數(TEETH):13 外徑: $\phi 21.70_{-0.03}$ (OUTSIDE DIAMETER) 根徑: $18.40_{\pm 0.2}$ (THREAD DEPTH DIAMETER)	
SA3-100(NS) 軸心尺寸	

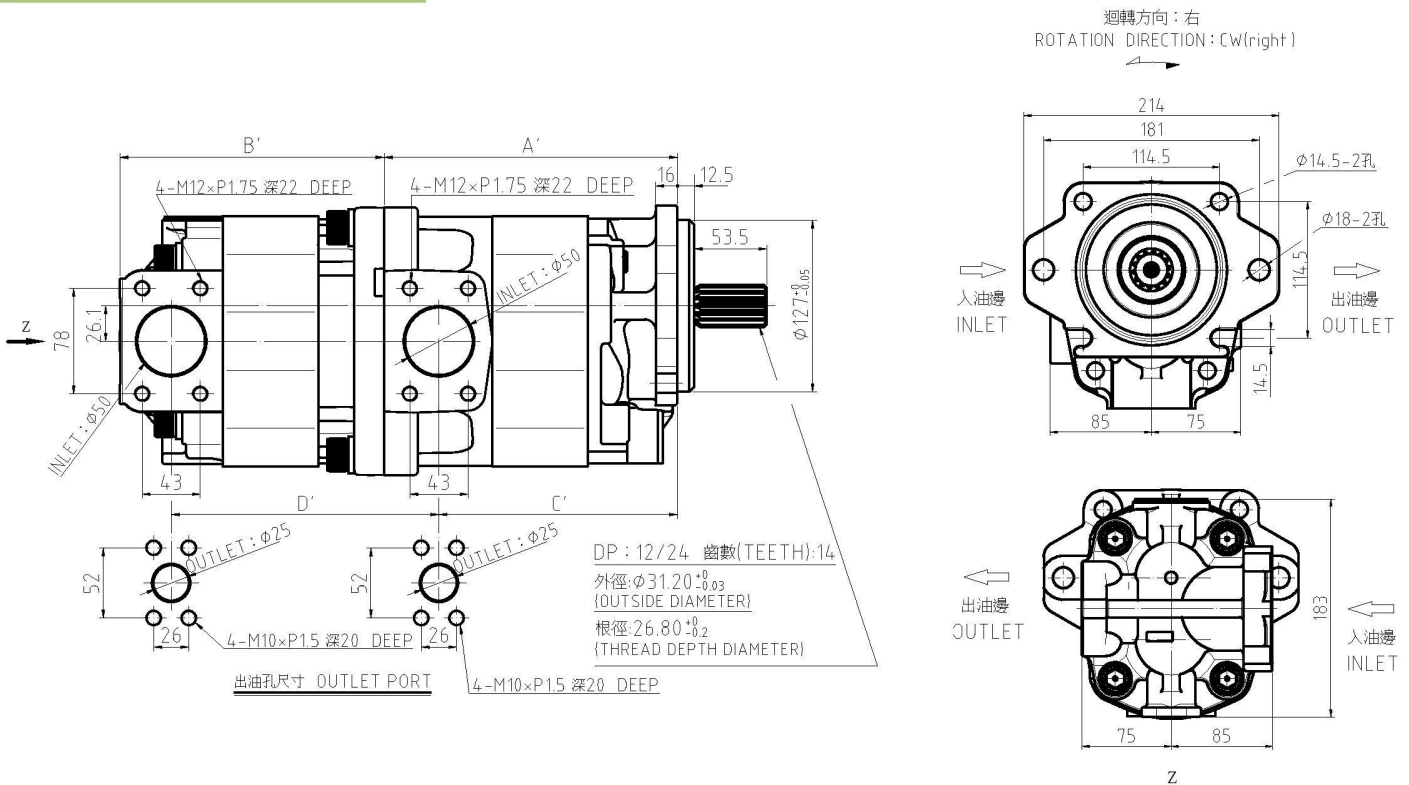
型式 MODEL	流量 DISPLACEMENT (cm <sup>3</sup> /rev.)	最高使用壓力 MAX. PRESSURE (kg/cm <sup>2</sup> )	持續使用壓力 RATED PRESSURE (kg/cm <sup>2</sup> )	迴轉數SPEED (r.p.m.)		長度 DIMENSION (mm)	
				最高 MAX.	最低 MIN.	A	B
SA3-056	56.0	250	210	2500	500	187.5	149.5
SA3-063	63.1					191.5	153.5
SA3-071	68.5					194.5	156.5
SA3-080	80.0					201.0	163.0
SA3-090	90.7					207.0	169
SA3-100	100.5					212.5	174.5
SA3-112	112.9	210	175	2000	500	219.5	181.5
SA3-125	125.4	175	155	2000	500	226.5	188.5

## SAR3-100+100



## GEAR PUMP FOR KOMATSU LOADER (DOUBLE) 小松鏟土機用齒輪泵浦(雙連)

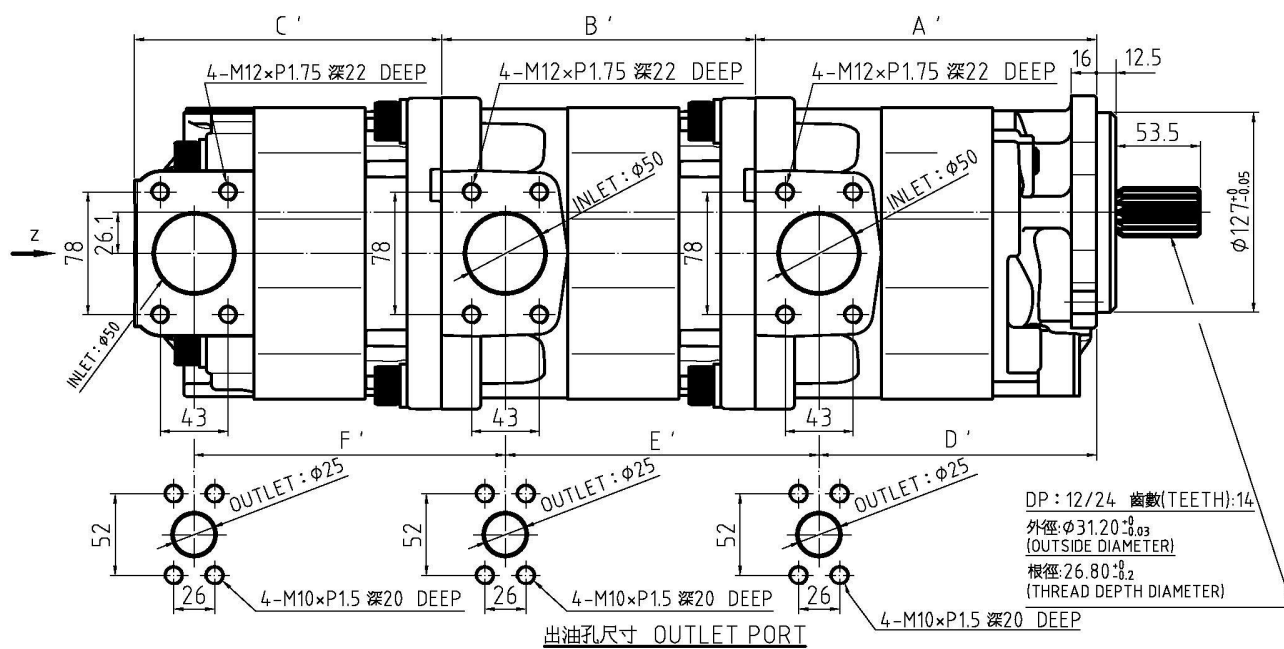
產品料號 KOMATSU PART NO.	型號 HYDROME MODEL	迴轉方式 SHAFT ROTATION	KOMATSU適用機種 USE FOR KOMATSU MODEL
705-52-32001	SAR3-080+080	R: CLOCKWISE 右迴轉	HD465-2/3/5, etc.
705-52-32270	SAR3-100+100	L: COUNTERCLOCKWISE 左迴轉	



型式 MODEL	流量 DISPLACEMENT (cm <sup>3</sup> /rev.)	最高使用壓力 MAX. PRESSURE (kg/cm <sup>2</sup> )	持續使用壓力 RATED PRESSURE (kg/cm <sup>2</sup> )	迴轉數SPEED (r.p.m.)		前段長度 FRONT PUMP DEMENSION (mm)		後段長度 REAR PUMP DEMENSIO (mm)	
				最高 MAX.	最低 MIN.	A'	C'	B'	D'
SA3-032	32.0	250	210	2500	500	/	/	152.0	154.0
SA3-036	36.5							154.5	156.5
SA3-040	40.0							156.5	158.5
SA3-050	49.8							162.0	164.0
SA3-056	56.0					191.5	151.5	165.5	167.5
SA3-063	63.1					195.5	155.5	169.5	171.5
SA3-071	68.5					198.5	158.5	172.5	174.5
SA3-080	80.0					205.0	165.0	179.0	181.0
SA3-090	90.7					211.0	171.0	190.0	192.0
SA3-100	100.5					216.5	176.5	195.5	197.5
SA3-112	112.9	210	175	2000	223.5	183.5	202.5	204.5	
SA3-125	125.4	175	155	230.5	190.5	209.5	211.5		

## ■ GEAR PUMP FOR KOMATSU LOADER (TRIPLE) 小松鏟土機用齒輪泵浦(三連)

型式 MODEL	流量 DISPLACEMENT (cm <sup>3</sup> /rev.)	最高使用壓力 MAX. PRESSURE (kg/cm <sup>2</sup> )	持續使用壓力 RATED PRESSURE (kg/cm <sup>2</sup> )	迴轉數SPEED (r.p.m.)		長度 DIMENSION (mm)					
				最高 MAX.	最低 MIN.	A'	D'	B'	C'	E'	F'
SA3-032	32.0	250	210	2500	500	191.5	151.5	156.0	152.0	156.0	154.0
SA3-036	36.5							158.5	154.5	158.5	156.5
SA3-040	40.0							160.5	156.5	160.5	158.5
SA3-045	45.3							163.5	159.5	163.5	161.5
SA3-050	49.8							166.0	162.0	166.0	164.0
SA3-056	56.0					191.5	151.5	169.5	165.5	169.5	167.5
SA3-063	63.1					195.5	155.5	173.5	169.5	173.5	171.5
SA3-071	68.5					198.5	158.5	176.5	172.5	176.5	174.5
SA3-080	80.0					205.0	165.0	183.0	179.0	183.0	181.0
SA3-090	90.7					211.0	171.0	194.0	190.0	194.0	192.0
SA3-100	100.5	216.5	176.5	199.5	195.5	199.5	197.5				
SA3-112	112.9	210	175	2000	223.5	183.5	206.5	202.5	206.5	204.5	
SA3-125	125.4	175	155		230.5	190.5	213.5	209.5	213.5	211.5	



## OP-12



## ■ OIL PUMP FOR KOMATSU ENGINE

### 小松引擎用機油泵浦

產品料號 PART NO.: 6204-51-1100

流量 DISPLACEMENT: 9.5 cm<sup>3</sup>/rev. 重量 WEIGHT: 0.7 kg

COVER ASS'Y PART NO.: 6204-51-1201

GEAR PART NO.: 6204-51-1610 (GEAR LENGTH: 12 m/m)

COUNTER SHAFT PART NO.: 6204-51-1620

適用機種 USE FOR MODEL:

C60-3, PC60-5, PC60-6, PC60-7, PC70-6, PC75UU-1, PC75UU-2, PC75UU-3, PC80-3, PC90-1, PW60-3, D20-6, D20-7, D21-6, D21-7

## OP-16



## ■ OIL PUMP FOR KOMATSU ENGINE

### 小松引擎用機油泵浦

產品料號 PART NO.: 6206-51-1100

流量 DISPLACEMENT: 12.7 cm<sup>3</sup>/rev. 重量 WEIGHT: 0.7 kg

COVER ASS'Y PART NO.: 6206-51-1201

GEAR PART NO.: 6206-51-1610 (GEAR LENGTH: 16 m/m)

COUNTER SHAFT PART NO.: 6206-51-1620

適用機種 USE FOR MODEL:

D37E-5, D31P-18, D31E-20, PW150-1, PC120-3, PC100-3, PW150-1, PC120-3, PC100-3

## OP-21



## ■ OIL PUMP FOR KOMATSU ENGINE

### 小松引擎用機油泵浦

產品料號 PART NO.: 6207-51-1100

流量 DISPLACEMENT: 16.6 cm<sup>3</sup>/rev. 重量 WEIGHT: 0.7 kg

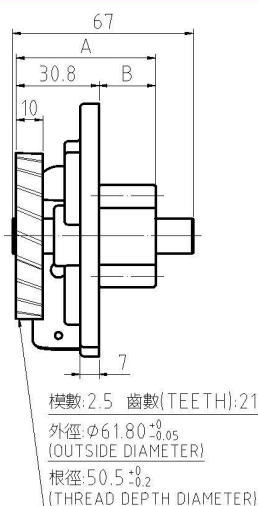
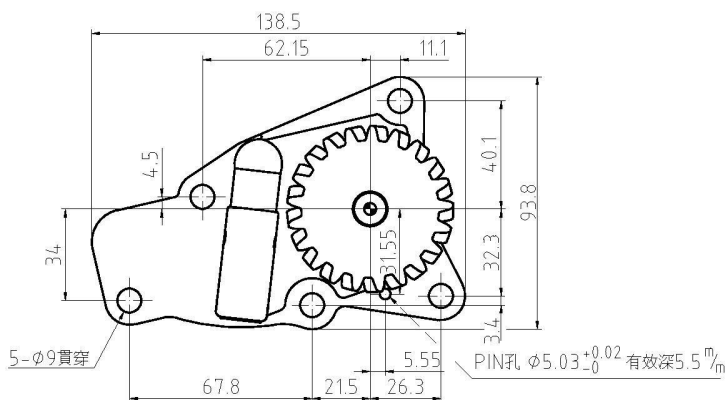
COVER ASS'Y PART NO.: 6207-51-1201

GEAR PART NO.: 6207-51-1610 (GEAR LENGTH: 21 m/m)

COUNTER SHAFT PART NO.: 6207-51-1620

適用機種 USE FOR MODEL:

PW100-3, PC150-3, PC150-5, PC130-6, PC128UU-1, PC120-6, PC100-6, PC100-5, PC120-5, PC130-5



型式 MODEL	長度(mm) DIMENSION	
	A	B
OP-12	42.8	12
OP-16	46.8	16
OP-21	51.8	21

## OP-32-21T



## ■ OIL PUMP FOR KOMATSU ENGINE

### 小松引擎用機油泵浦

產品料號 PART NO.: 6209-51-1100

流量 DISPLACEMENT: 25.3 cm<sup>3</sup>/rev.

重量 WEIGHT: 0.9kg

COVER ASS'Y PART NO.: 6209-51-1201

GEAR PART NO.: 6209-51-1610 (GEAR LENGTH: 32 m/m)

COUNTER SHAFT PART NO.: 6209-51-1620

適用機種 USE FOR MODEL:

PC200-5, PC220-5

## OP-32-20T



## ■ OIL PUMP FOR KOMATSU ENGINE

### 小松引擎用機油泵浦

產品料號 PART NO.: 6209-51-1101

流量 DISPLACEMENT: 25.3 cm<sup>3</sup>/rev.

重量 WEIGHT: 0.9kg

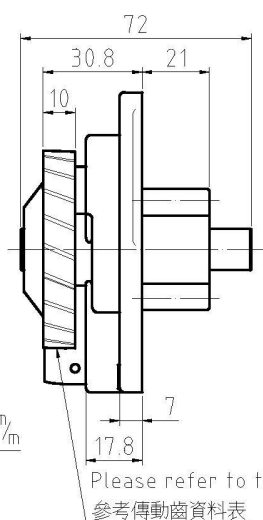
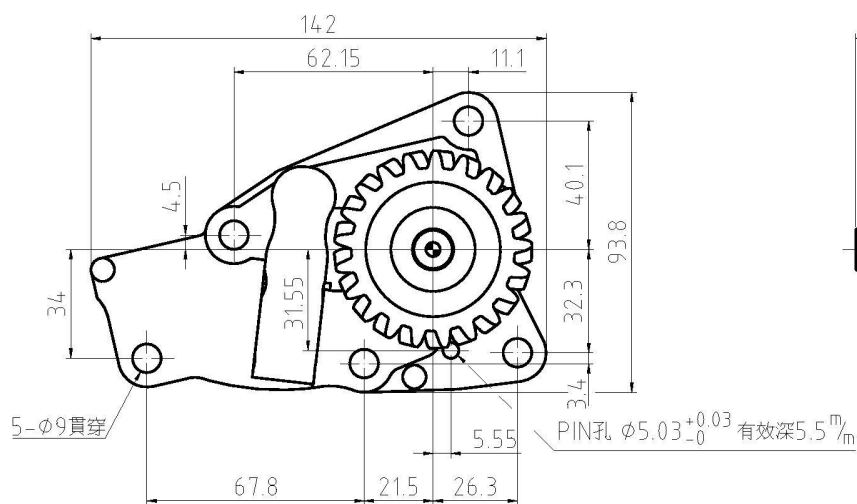
COVER ASS'Y PART NO.: 6209-51-1201

GEAR PART NO.: 6209-51-1610 (GEAR LENGTH: 32 m/m)

COUNTER SHAFT PART NO.: 6209-51-1620

適用機種 USE FOR MODEL:

PC200-6, PC220-6, PC230-6



## ■ Details of Transmission Gear

### 傳動齒資料

型號 (MODEL)	OP-32-21T	OP-32-20T
模數 (MODULE)	M2.5xRH23°	M2.5xRH23°
齒數 (NUMBER OF TEETH)	21	20
外徑 (OUTSIDE DIAMETER)	ø61.75	ø61.75
根徑 (THREAD DEPTH DIAMETER)	ø50.10	ø50.30

## KP-1009CLFSS



## ■ CHARGING PUMP FOR KOBELCO EXCAVATOR 神鋼挖土機用輔助泵浦

KP1007CLFSS Part No.: KP1007CLFSS

KP1009CLFSS Part No.: KP1009CLFSS

KP1011CLFSS Part No.: KP1011CLFSS

適用機種 USE FOR MODEL:

SK120, SK200, SK300, etc.

## KP-1009CHFSS

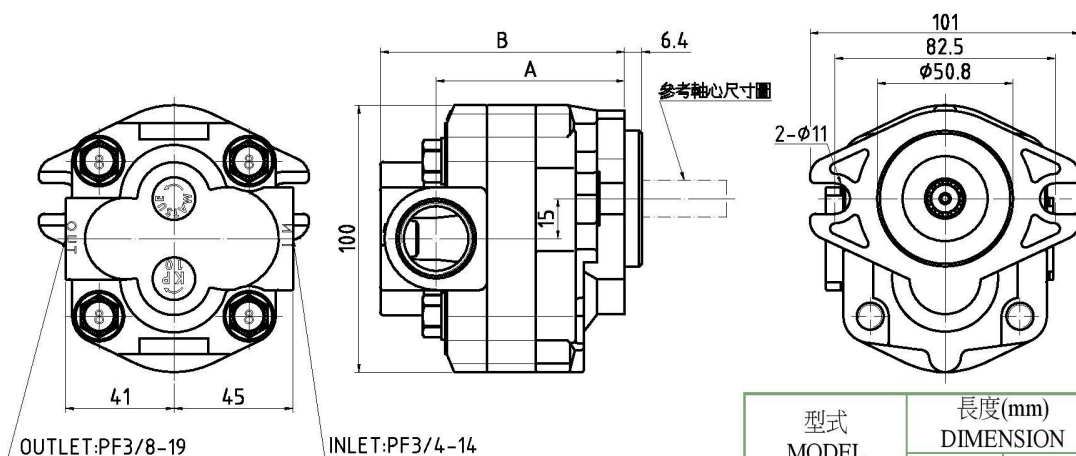


## ■ CHARGING PUMP FOR CATERPILLAR EXCAVATOR 卡特挖土機用輔助泵浦

產品料號 PART NO.: KP-1009CHFSS

適用機種 USE FOR MODEL:

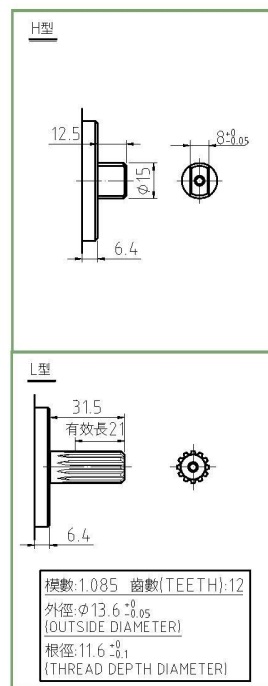
E200B



OUTLET:PF3/8-19

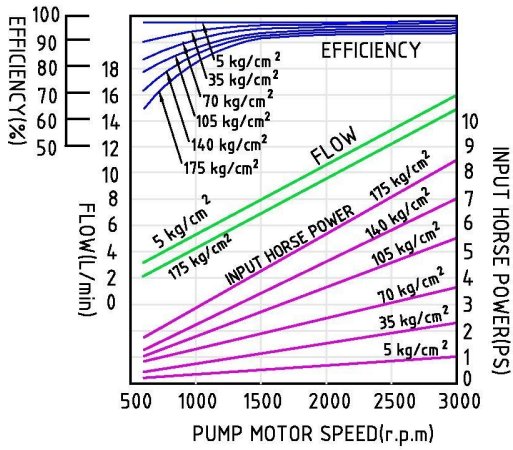
INLET:PF3/4-14

型式 MODEL	長度(mm) DIMENSION	
	A	B
KP-1007	68	88.4
KP-1009	71	91.4
KP-1011	74.5	94.9

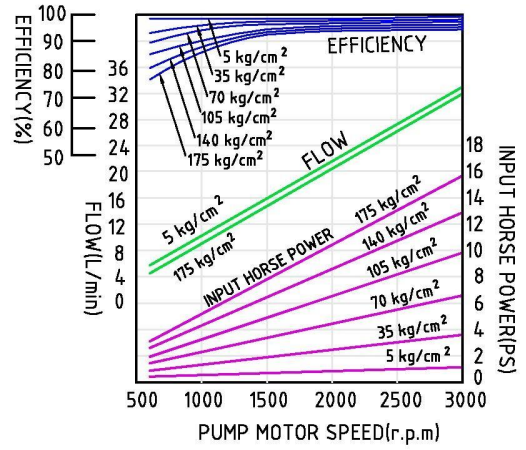


型號 MODEL	流量 DISPLACEMENT (cm <sup>3</sup> /rev.)	最高壓力 MAX. PRESSURE (kg/cm <sup>2</sup> )	迴轉速度 SPEED (r.p.m.)		重量 WEIGHT (kg)
			最高 MAX.	最低 MIN.	
KP-1005	5.45	175	3000	600	1.5
KP-1007	7.26	175	3000	600	1.6
KP-1009	9.08	175	3000	600	1.7
KP-1011	11.20	175	3000	600	1.8
KP-1013	13.02	175	3000	600	1.9
KP-1015	14.84	175	3000	600	2.0

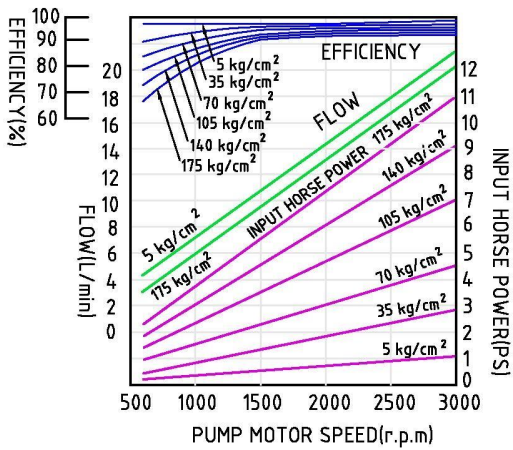
## KP1005



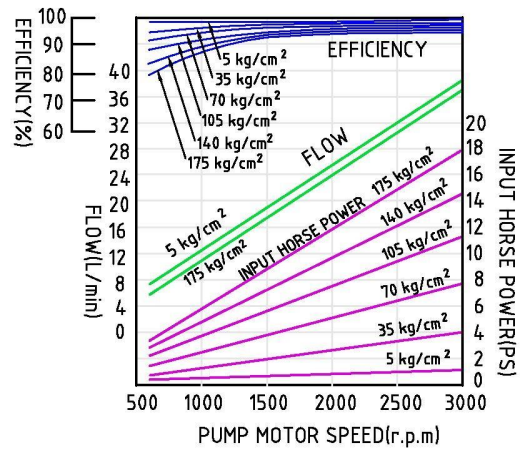
## KP1011



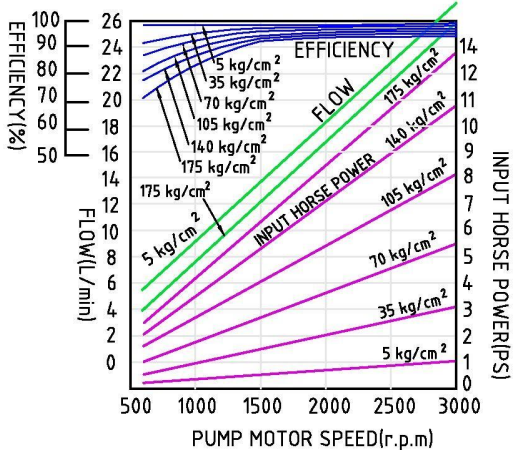
## KP1007



## KP1013



## KP1009



## KP1015

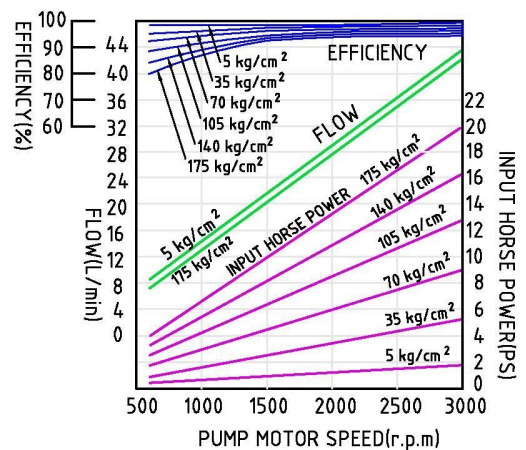
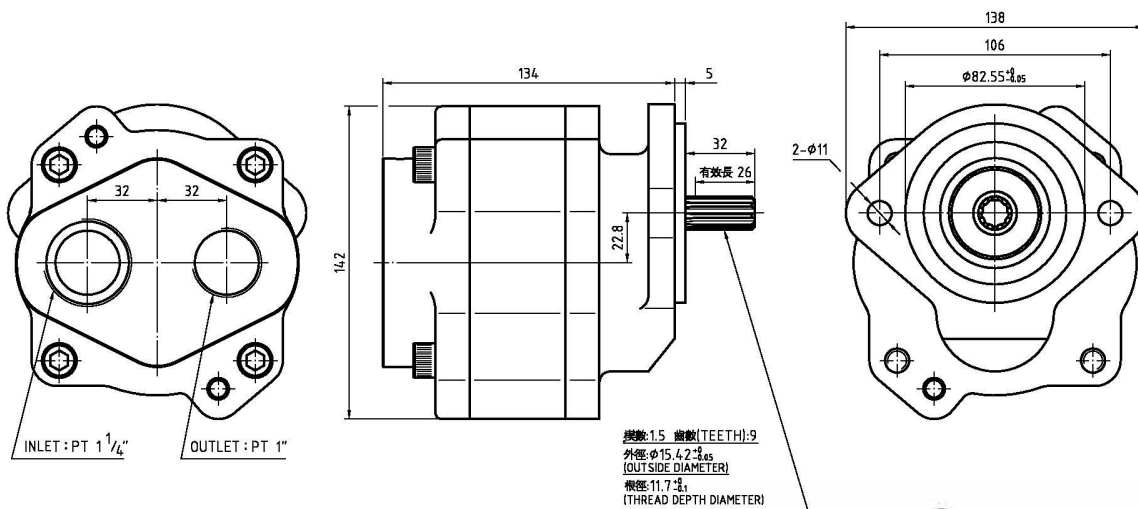


FIG.18-03



■ CHARGING PUMP FOR FURUKAWA WHEEL LOADER  
古河輪式鏟土機用輔助泵浦

產品料號 PART NO.: 95518-03001	
流量 DISPLACEMENT: 41.3cm <sup>3</sup> /rev.	重量 WEIGHT: 9.5 kg
使用壓力 PRESSURE: MAX.: 36 kg/cm <sup>2</sup> RATED.: 25 kg/cm <sup>2</sup>	
迴轉速度 SPEED: MAX.: 3200 r.p.m. MIN.: 600 r.p.m.	
適用機種 USE FOR MODEL: FL230-1, FL230-2	



## ■ TRACK ADJUSTER GREASE VALVE 履帶張緊缸逆止閥(黃油嘴)

### HITACHI SERIES



型號 MODEL: HIT2642

產品料號 PART NO.: 4255055

適用機種 USE FOR MODEL:  
所有HITACHI履帶型建築機械  
ALL MODELS OF HITACHI CRAWLER BUILDING MACHINE.

### KOMATSU SERIES



型號 MODEL: KOM2770

產品料號 PART NO.: 07959-3000

適用機種 USE FOR MODEL:  
所有KOMATSU履帶型推土機  
ALL MODELS OF KOMATSU CRAWLER BULLDOZER.

### KOMATSU SERIES



型號MODEL: KOM1969

產品料號 PART NO.: 07959-2000

適用機種 USE FOR MODEL:  
所有KOMATSU履帶型建築機械  
ALL MODELS OF KOMATSU CRAWLER BUILDING MACHINE.

### CATERPILLAR SERIES

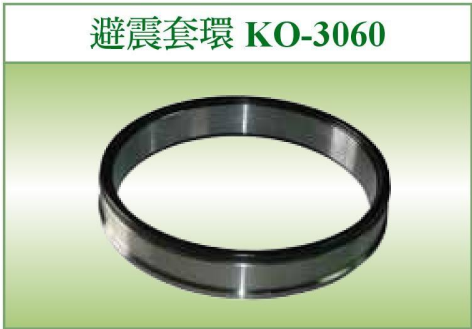


型號 MODEL: CAT2255

產品料號 PART NO.: 2S5925

適用機種 USE FOR MODEL:  
所有CATERPILLAR履帶型建築機械  
ALL MODELS OF CATERPILLAR CRAWLER BUILDING MACHINE.

■ **OTHER PARTS FOR KOMATSU**  
小松其他零件



■ **OTHER PRODUCTS**  
其他產品



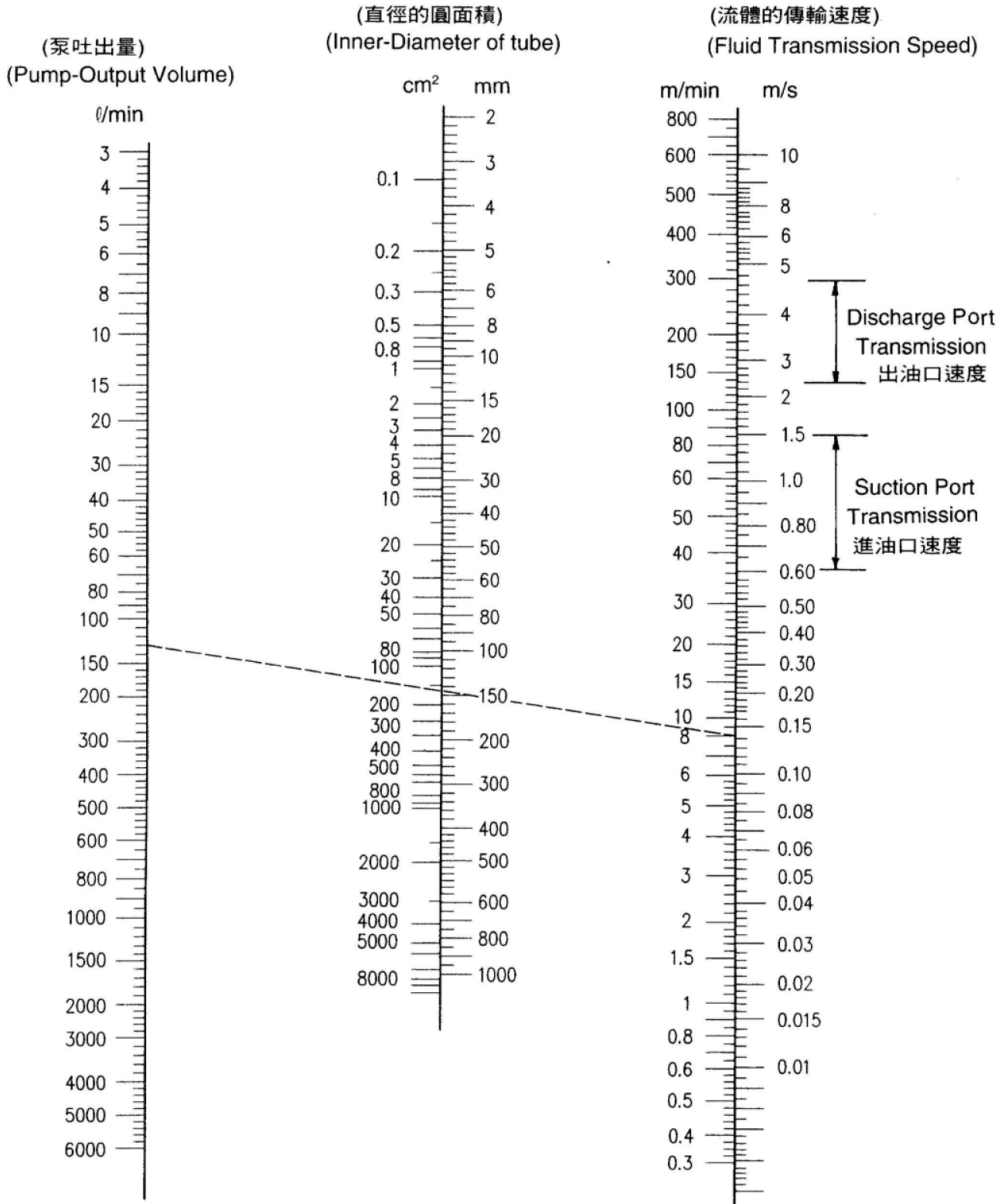
**OEM PRODUCTS**



■ Gear Pump  
齒輪泵

液壓常識

Piping Diameter - Fluid Transmisson - Flow Volume Drawing  
使用管徑與流速關係表



Viscosity - Temperature Diagram  
使用管徑與流速關係表

