

GAUGE COCK, GAUGE DAMPER, STOP VALVE

Gauge Cock



GCT-02~03



GCLT-02~03



Gauge Damper



SB-02~04

Stop Valve



ST-02~08



K

How to order

GCT, SB, ST - 02

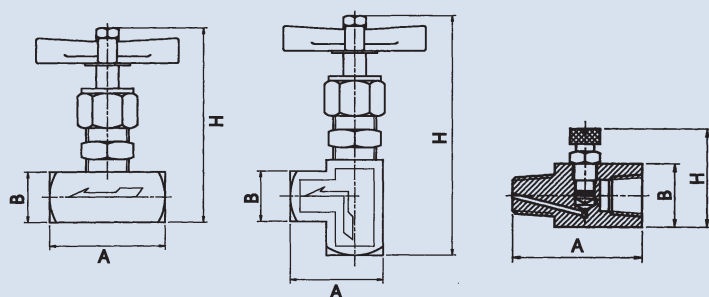
	1	2
1	Model	GCT, SB, ST: 180° GCLT: 90°
2	Port size	02: 1/4" 03: 3/8" 04: 1/2" 06: 3/4" 08: 1"

Specifications

Model	Type	Port Size (PT)	Max. Pressure (bar)	Flow (lpm)	Weight (kg)	Model	Port Size (pt)	Max. Pressure (bar)	Flow (lpm)	Orifice (inch)	Weight (kg)
GCT-02	180 °	1/4"	250	3	0.35	ST-02	1/4"	350	20	3/16	0.33
GCT-03		3/8"		21	0.39	ST-03	3/8"		40	9/32	0.43
GCLT-02	90 °	1/4"		3	0.34	ST-04	1/2"		80	11/32	0.65
GCLT-03		3/8"		21	0.38	ST-06	3/4"		120	7/16	1.46
SB-02	180 °	1/4"	100	0.5	0.1	ST-08	1"		300	9/16	2.50
SB-03		3/8"		0.7	0.12						
SB-04		1/2"		1.5	0.19						

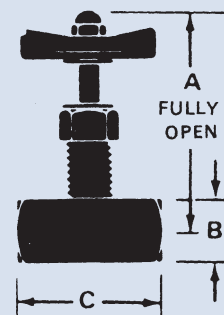
Dimensions

Unit: mm



Model	A	B	H
GCT-02	52.5	26	95.5
GCT-03	52.5	26	95.5
GCLT-02	44.5	26	109
GCLT-03	44.5	26	109
SB-02	43	21	32
SB-03	45	23	34
SB-04	52	27	38

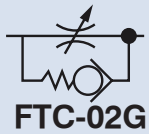
Unit: inch



Model	A	B	C
ST-02	3-1/16	7/8	2
ST-03	4-1/32	1	3-2/8
ST-04	3-15/16	1-1/4	2-7/8
ST-06	4-15/16	1-1/2	3-5/8
ST-08	5-5/16	2	4-1/16

FLOW CONTROL VALVE

SUB-PLATE MOUNTING TYPE



PIPE CONNECTION TYPE



How to order

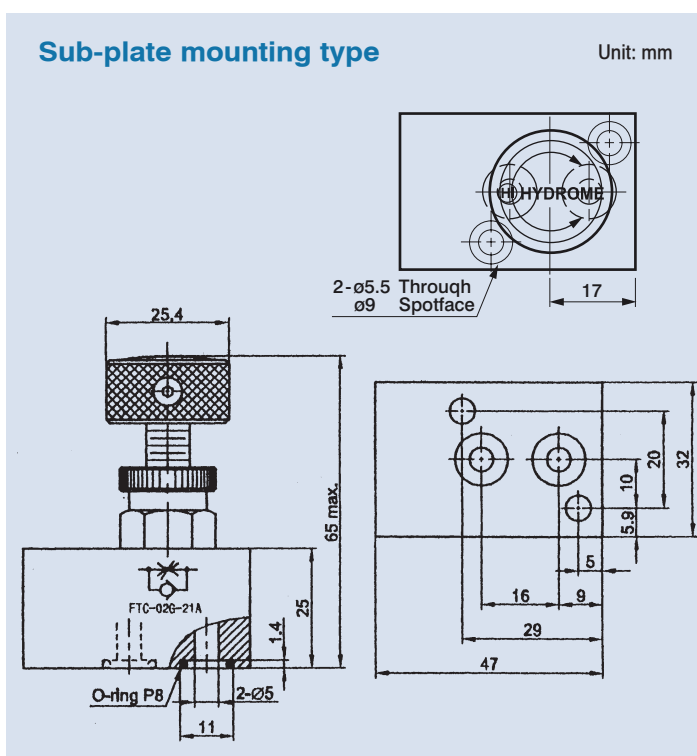
FTC - 02 G - 21A

1	2	3	4
1	Model	FTC: Throttle and check valve	FT: Throttle valve only
2	Valve size		
3	Mounting type	G: Sub-plate mounting	
4	Design no.		

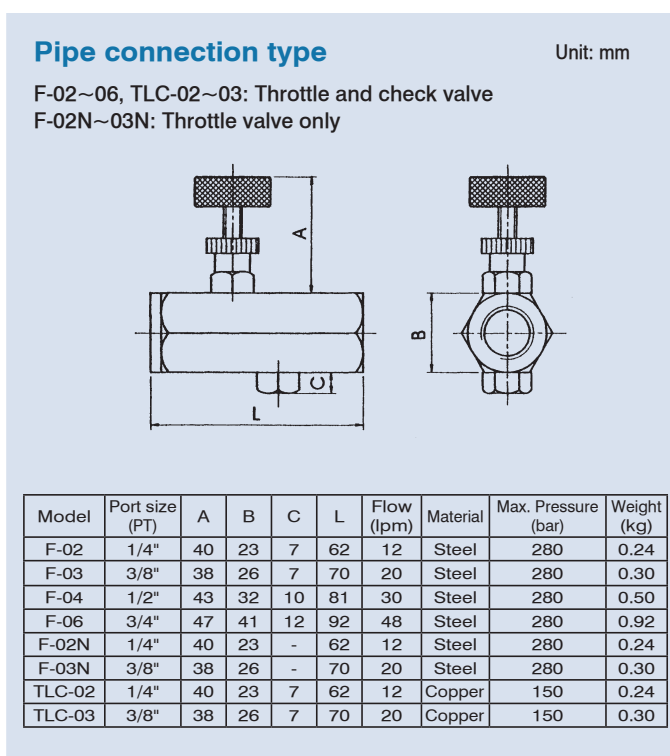
Specifications

Model	Max. Pressure (bar)	Flow (lpm)	Weight (kg)	Bolt size
FTC-02G	230	10	0.36	M5x25L
FT-02G				

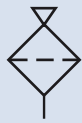
Dimensions



Specifications / Dimensions



OIL FILLER BREATHER



AB-1162(S)
AB-1163(S)



SY-10



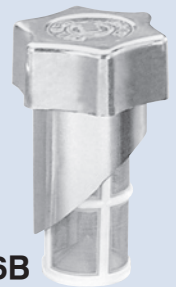
HY-24



CB-16



CB-16B



How to order

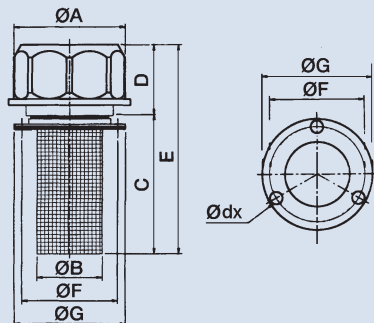
AB - 1163 S

1	2	3
1	Model	
2	1163: General use	1162: Miniature type
3	Omit: Plastic strainer	S: Stainless steel screen

Dimensions

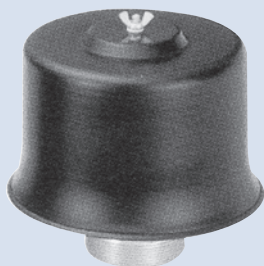
AB-1162(S), AB-1163(S), SY-10, HY-24, CB-16, CB-16B

Unit: mm



Model	Port	A	B	C	D	E	F	G	d x Hole	Filtration Micron		Weight (kg)
										Air	Oil	
AB-1162	32	53	31	65	34	99	46.5	53	ø6 x 3	40	400	0.09
AB-1162S												
AB-1163	50	80	48	95	50	147	71	82	ø6 x 3		500	0.26
AB-1163S												
SY-10	50	80	49	150	52	187	78	88	ø6 x 4			0.3
HY-24	88	137	85	213	56	269	120	141	ø8 x 4			1.34
CB-16	53	85	46	120	38	158	Welding type	-		400	0.61	
CB-16B								For tank side using			0.60	

AIR FILTER



AB-02~32



AB-02A~04A



AB-04B~08B

How to order

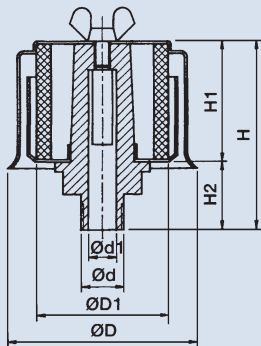
AB - 02

1	2
1	Model
2	Port size Thread connection

Dimensions

AB-02~32

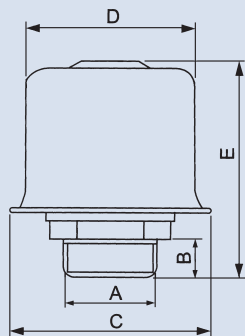
Unit: mm



Model	Port Size d (PT)	d1	D	D1	H1	H2	H	Filtration Micron	Weight (kg)
AB-02	1/4"	8	52	41	36	22	58	40	0.2
AB-03	3/8"								0.2
AB-04	1/2"	19	67	51	41	27	68		0.3
AB-06	3/4"								0.3
AB-08	1"	25	100	65	45	26	74		0.4
AB-12	1-1/2"								0.65
AB-16	2"	48	130	92	90	37	130		0.65
AB-20	2-1/2"								1.5
AB-24	3"	61	187	150	115	59	174		1.5
AB-32	4"								2.3

AB02A~04A AB04B~08B

Unit: mm

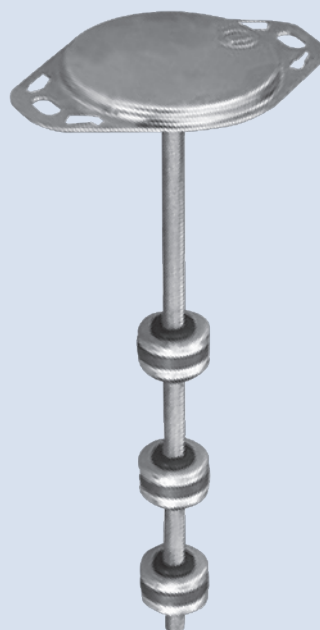
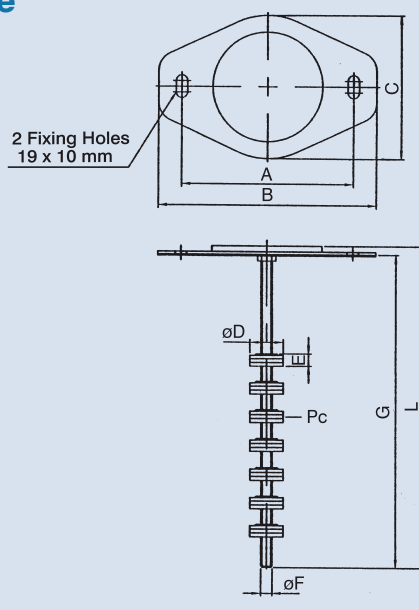


Model	Port Size A (PT)	B	C	D	E	Weight (kg)
AB-02A	1/4"	16	57.5	52	56	0.08
AB-03A	3/8"	16	57.5	52	56	0.08
AB-04A	1/2"	18	57.5	52	63	0.1
AB-04B	1/2"	18	86	79.5	75.5	0.18
AB-06B	3/4"	21	86	79.5	76.5	0.21
AB-08B	1"	23	86	79.5	82.5	0.28

MAGNET FLANGE FOR TANK, TANK END COVER

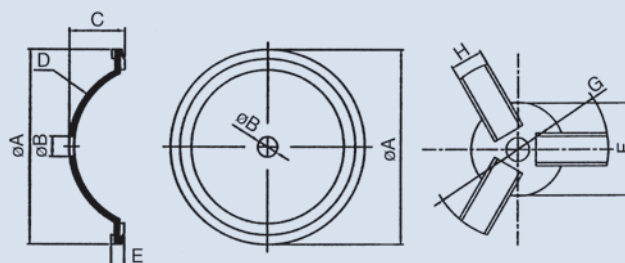
Dimensions

Magnet Flange



Model	Dimensions (mm)								Qt'y of Magnet (PC)
	A	B	C	øD	E	øF	G	L	
FJ-200-2P	120	142	102	32	26	8	200	209	2
FJ-300-3P	120	142	102	32	26	8	300	309	3
FJ-400-5P	120	142	102	32	26	8	400	409	5
FJ-500-6P	120	142	102	32	26	8	500	509	6
FJ-600-7P	120	142	102	32	26	8	600	609	7
FJ-700-8P	120	142	102	32	26	8	700	709	8
FJ-800-10P	120	142	102	32	26	8	800	809	10
FJ-1000-13P	120	142	102	32	26	8	1000	1009	13

Tank End Cover



Model	Dimensions (mm)								Tank Cutting DIA. (mm)	Weight (kg)
	øA	B	C	D	E	øF	G	H		
THY-08	210	16	40	4.5	17	115	182	26.5	160	2.88
THY-10	260	16	41	4.5	17	115	248	26.5	210	3.70
THY-12	310	16	47	4.5	17	140	316	26.5	250	5.12
THY-14	367	16	47	4.5	17	140	368	26.5	300	6.28
THY-18	465	16	68	4.5	17	140	452	26.5	400	9.12

SUCTION STRAINER



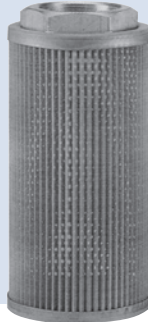
SFW



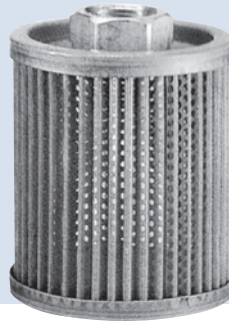
SFN



MF



MFN

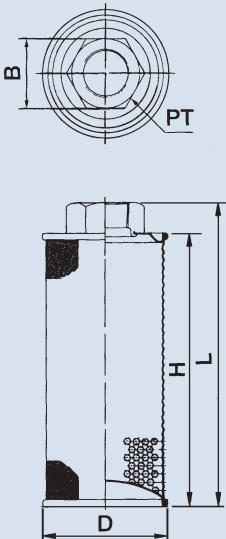


Specifications / Dimensions

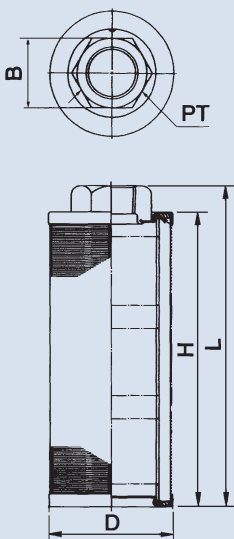


Unit: mm

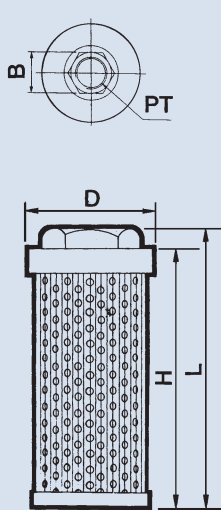
SFW



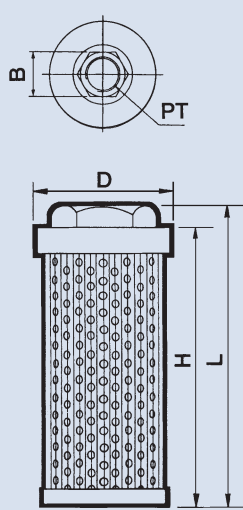
SFN



MF



MFN



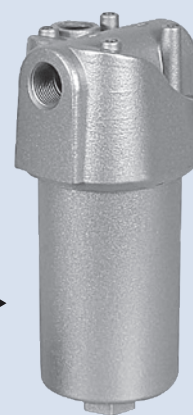
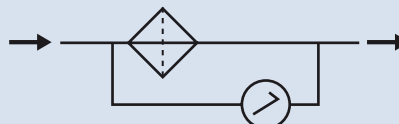
Model	Port (PT)	Flow (lpm)	D	L	H	B	Filtration Mesh	Weight (kg)
SFW-02	1/4	14	55	109	100	22	120	0.13
SFW-03	3/8	17	55	109	100	22		0.13
SFW-04S	1/2	20	55	113	100	30		0.14
SFW-04	1/2	30	55	145	132	30		0.16
SFW-06	3/4	50	65	163	145	34		0.19
SFW-08	1	100	87	208	188	42		0.35
SFW-10	1-1/4	180	106	230	208	54		0.50
SFW-12	1-1/2	246	126	247	228	65		0.70
SFW-16	2	384	126	330	300	75		0.82
SFW-20	2-1/2	700	157	414	390	97		1.36
SFW-24	3	800	157	458	435	110	150	1.47
SFW-32	4	1000	208	380	357	142		2.45
SFN-04	1/2	35	64	160	153	30		0.27
SFN-06	3/4	46	64	166	153	34		0.28
SFN-08	1	90	85	210	198	42		0.48
SFN-10	1-1/4	150	103	231	215	54		0.77
SFN-12	1-1/2	205	120	246	232	65		0.96
SFN-16	2	320	120	332	317	75		1.27
SFN-20	2-1/2	550	148	434	419	97		2.00
SFN-24	3	600	148	434	419	110		2.68

Model	Port (PT)	Flow (lpm)	D	L	H	B	Filtration Micron	Weight (kg)
MF-03	3/8	24	58	96	90	22	100	0.10
MF-04	1/2	32	58	100	90	29		0.14
MF-06	3/4	56	58	137	124	34		0.18
MF-08	1	110	58	170	155	42		0.2
MF-10	1-1/4	210	71	186	170	54		0.35
MF-12	1-1/2	285	85	196	182	61		0.49
MF-16	2	395	103	215	202	72		0.65
MF-20	2-1/2	750	148	274	252	97		1.20
MF-24	3	800	148	274	252	110		1.21
MF-32	4	1000	208	380	357	142		2.45
MFN-02	1/4	25	64	90	85	22	100	0.11
MFN-03	3/8	30	64	90	85	22		0.11
MFN-04	1/2	50	64	115	103	30		0.15
MFN-06	3/4	90	64	145	131	34		0.18
MFN-08	1	160	85	175	162	42		0.35
MFN-10	1-1/4	280	103	200	187	54		0.50
MFN-12	1-1/2	420	120	205	190	65		0.80
MFN-16	2	550	120	225	208	75		1.00
MFN-20	2-1/2	850	148	309	292	97		1.30
MFN-24	3	1000	148	309	292	110		1.45
MFN-32	4	1200	208	380	357	142		2.45

PRESSURE LINE FILTER

FEATURES:

- The body's material is aluminum alloy code A356.
- The O-Ring is NBR for temperature Max. 100 °C.
- The indicator is a difference pressure switch with pressure more than 2.5 bar.
- The resistance of filter element should be lower than 5.5 bar to keep it life long, its life is normally 300~400 working hours.



How to order

TF - 06 - ✖ - ✖

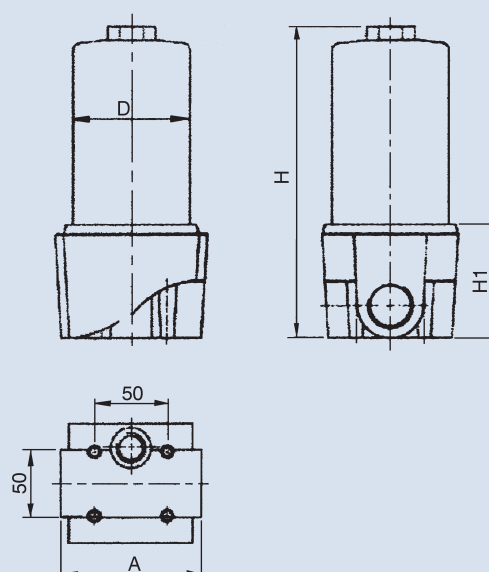
1 2 3 4

1	Model	Material: Aluminum alloy A356	2	Port size	06: PT 3/4" 08: PT 1"
3	Filter element		4	Indicator	
	Code	Element		Code	Indicator
	A3	Fiber 3μ B ≥ 200		N	Plug
	A10	Fiber 10μ B ≥ 200		V	Visual
	A25	Fiber 25μ B ≥ 200		E	Visual-electrical
	M60	60 mesh/cm			
	M100	100 mesh/cm			
	M150	150 mesh/cm			

Specifications / Dimensions

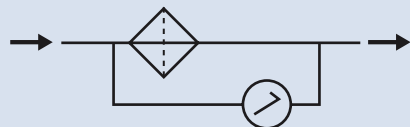
Model	Port Size (PT)	Max. Pressure (bar)	Element Code	Flow (lpm)	Weight (kg)
TF-06	3/4"	100	A3	30	1.7
			A10	45	
			A25	60	
			M60	180	
			M100	160	
			M150	140	
TF-08	1"		A3	35	
			A10	50	
			A25	70	
			M60	200	
			M100	180	
			M150	150	

Unit: mm



A	D	H	H1
100	85	236	86
100	85	236	86

PRESSURE LINE FILTER



How to order

HP-06 - 1 - ✖ - ✖ - ✖ - ✖

1	Model Material: Steel						3	Element				
2	H length											
	HP-06-※	H Length	HP-08-※	H length	HP-10-※	H length		Code	Element		Code	Element
	1	175 mm	1	225 mm	1	282 mm		A3	Fiber 3μ B ≥ 200		A25	Fiber 25μ B ≥ 200
	2	198 mm	2	335 mm	2	373 mm		A6	Fiber 6μ B ≥ 200		T40	Metal 40μ
	3	298 mm			3	492 mm		A10	Fiber 10μ B ≥ 200			
4	Indicator						5	Seal				
	Code	Indicator						Code	Material			
	N	Plug						N	Nbr			
	V	Visual						V	Viton			
	E	Visual-electrical										
6	Port thread	PT	BSP	NPT	SAE							

Specifications

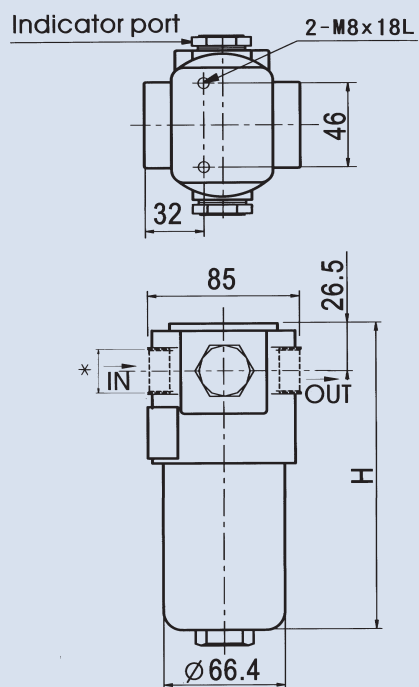
Model	Element Code	Port Size	Max. Pressure (bar)	Flow (lpm)	Weight (kg)	Model	Element Code	Port Size	Max. Pressure (bar)	Flow (lpm)	Weight (kg)
HP-06-1	A03	3/4"	350	20	3.6	HP-08-2	A03	1"	350	70	8.3
	A06			25			A06			90	
	A10			35			A10			120	
	A25			50			A25			150	
	T40			75			T40			200	
HP-06-2	A03			3.9	HP-10-1	A03	1"	70		15.5	
	A06					A06		90			
	A10					A10		120			
	A25					A25		150			
	T40					T40		200			
HP-06-3	A03			5	HP-10-2	A03	1-1/4"	140		21.2	
	A06					A06		240			
	A10					A10		290			
	A25					A25		360			
	T40					T40		400			
HP-08-1	A03	1"		35	3.9	HP-10-3	A03	1-1/2"		180	25.5
	A06						A06			300	
	A10						A10			360	
	A25						A25			450	
	T40						T40			500	

PRESSURE LINE FILTER, INDICATOR

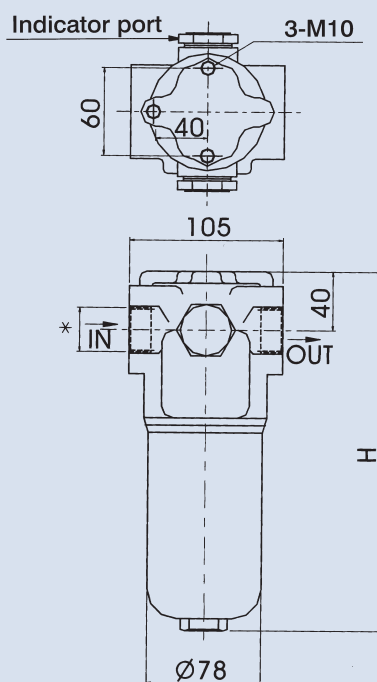
Dimensions

K

HP-06

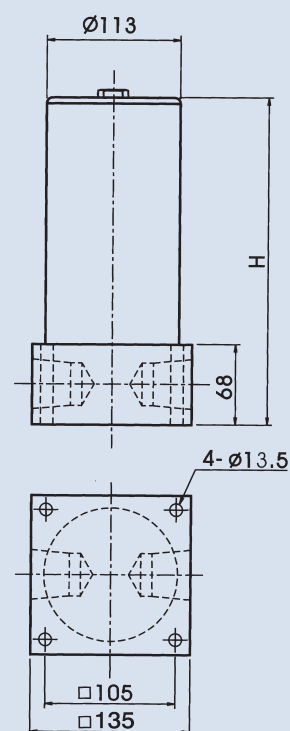


HP-08

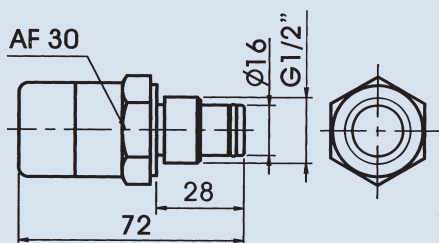


HP-10

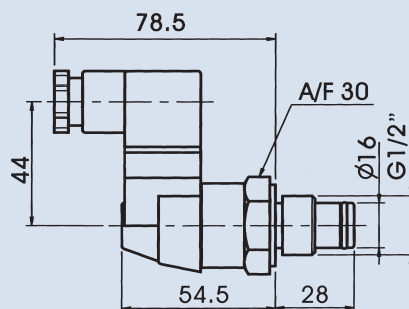
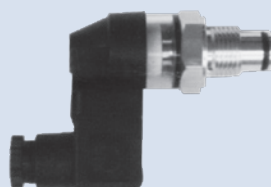
Unit: mm



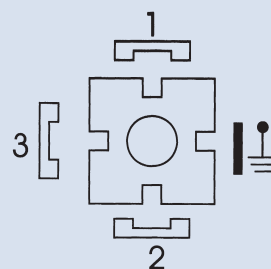
Visual



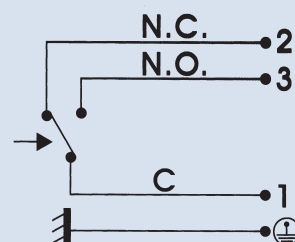
Visual-electrical



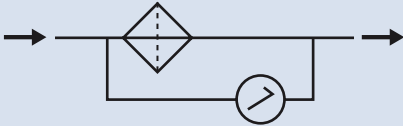
CONNECTOR



ELECTRICAL CONNECTION



PRESSURE LINE FILTER



How to order

DHP - 06 - ✖ - ✖ - ✖ - ✖

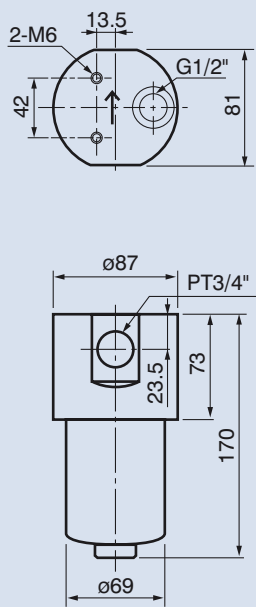
1 2 3 4 5 6

1	Model	Material: Aluminum alloy	2	Port size	06: 3/4" 08: 1" 10: 1 1/4"
3	Element		4	Indicator	
	Code	Element		Code	Indicator
	A3	Fiber 3μ B≥200		N	Plug
	A6	Fiber 6μ B≥200		V	Visual
	A10	Fiber 10μ B≥200		E	Visual-electrical
		Code	Element		
		A25	Fiber 25μ B≥200		
		T40	Metal 40μ		
5	Seal		6	Port thread	BSP NPT SAE
	Code	Material			
	N	Nbr			
	V	Viton			

Specifications / Dimensions

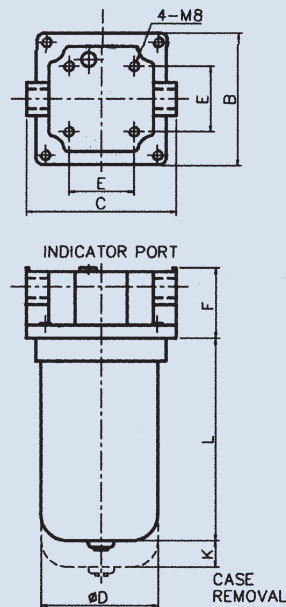
Model	Element Code	Port Size	Max. Pressure (bar)	Flow (lpm)	Weight (kg)
DHP-06	A03	3/4"	250	20	1.6
	A06			25	
	A10			35	
	A25			50	
	T40			75	
DHP-08	A03	1"	120	70	2.5
	A06			120	
	A10			150	
	A25			180	
	T40			200	
DHP-10	A03	1 1/4"		140	5.2
	A06			240	
	A10			290	
	A25			360	
	T40			400	

DHP-06



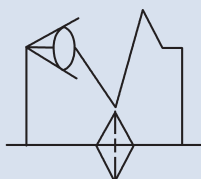
DHP-08, 10

Unit: mm



Port size	B	C	øD	E	F	K	L
08	100	115	90	50	54	20	155
10	134	140	115	68	67	25	236

PIPING TYPE RETURN, SUCTION FILTER



How to order

PRI - 10 - ✖ - ✖ - ✖

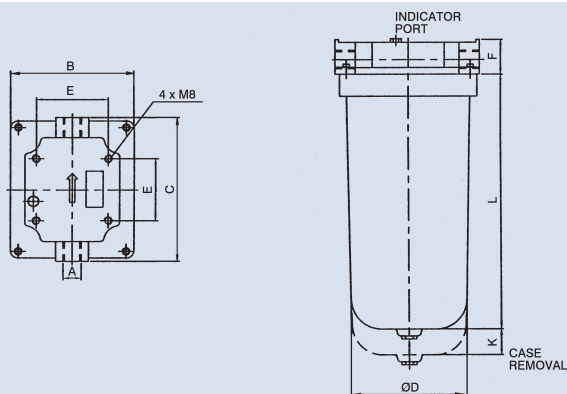
1	Model							
2	Port size (PT)	06: 3/4"	06L: 3/4" (long size)	08: 1"	08L: 1" (long size)	10: 1-1/4"	12: 1-1/2"	16: 2"
3	Flow type	N: Suction line Y: Return line						
4	Filter element							
Wire Mesh (mesh/cm)		Fiber Micron (μ) for return line						
M100		M300	FC3					
M120		M400						
M150		M600	FC10					
M200		M800						
M250		-	FC25					

5	Indicator	None: Plug	With indicator (see page 262)
For Suction Line		For Return Line	
Code	Description	Code	Description
1	Vacuum gauge 2" V-AD	3	Presssure gauge TT-12
2	Vacuum switch PS 82	4	Pressure switch PS 41
		5	Difference pressure switch

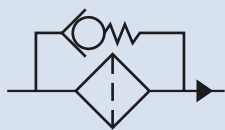
Specifications

Model	Port Size (PT) øA	Max. Pressure (bar)	Flow (lpm)	Dimensions (mm)							Weight (kg)
				B	C	øD	E	F	K	L	
PRI-06	3/4	70	110	114	131	100	45 x 80	48	25	166	2.8
PRI-06L			160	114	131	100	45 x 80	48	25	226	3.3
PRI-08	1		120	114	131	100	45 x 80	48	25	166	2.8
PRI-08L			180	114	131	100	45 x 80	48	25	226	3.3
PRI-10	1- 1/4		320	134	140	112	68	67	25	236	4.5
PRI-12	1 -1/2		350	134	140	112	68	67	25	236	4.5
PRI-16	2		500	140	170	135	80	90	40	290	6.6

Dimensions



SPIN-ON RETURN FILTER



CF-06, 08 ,10



CFG-06



How to order

CF - 06 - ✖ - ✖

1	2	3	4
1	Model CF: Pipe connection CFG: Mounted on tank		
2	Port size 06: 3/4" 08: 1" 10: 1-1/4" 12: 1-1/2"		
3	Filtration None: 10μ (general use)		
4	Indicator (see page 262) None: With pressure gauge TT-12 (normal) O: Without pressure gauge TT-12		

Specifications

Model	Port size (PT)	Max. Pressure (bar)	Flow (lpm)	Filtration (μ)	Weight (kg)
CF-06	3/4"	12	60 (10μ)	10: 10μ 25: 25μ	0.62
CF-08	1"		80 (10μ)		0.62
CF-10	1-1/4"		144 (10μ), 160 (25μ)		1.84
CF-12	1-1/2"		344 (10μ)		5.20
CFG-06	3/4"		60 (10μ)		0.87

Dimensions

CF-06, 08, 10

Model	A	B	C	D	H1	H	Mounted
CF-06	92	38	82	93	127	170	Piping
CF-08	92	38	82	93	127	170	
CF-10	137	48	136	128	167	236	
CFG-06	97	70	90	93	127	207	Tank

CFG-06

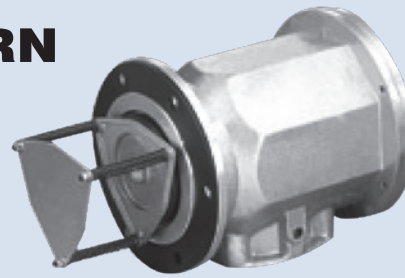
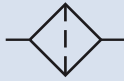
Model	A	B	C	D	H1	H	Mounted
CFG-06	97	70	90	93	127	207	Tank

CF-12

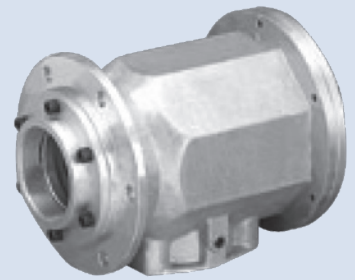
Model	A	B	D	F	H	L	M	N	P	Mounted
CF-12	PT 1-1/2"	77	230	127	307	284	165	146	171	Piping

Unit: mm

SUCTION OR RETURN LINE FILTER



For side of tank



For up-side of tank

K

How to order

FSS - 10 - ✱ - ✱

1 2 3 4

1	Model	2	Port size																
3	None: For suction line B: For return line	4	Filter media																
		<table> <tr> <th colspan="3">Wire Mesh (mesh/cm) for suction line</th><th>Fiber Micron (μ) for return line</th></tr> <tr> <td>M100</td><td>M200</td><td>M800</td><td>FC3</td></tr> <tr> <td>M120</td><td>M400</td><td>-</td><td>FC10</td></tr> <tr> <td>M150</td><td>M600</td><td>-</td><td>FC25</td></tr> </table>		Wire Mesh (mesh/cm) for suction line			Fiber Micron (μ) for return line	M100	M200	M800	FC3	M120	M400	-	FC10	M150	M600	-	FC25
Wire Mesh (mesh/cm) for suction line			Fiber Micron (μ) for return line																
M100	M200	M800	FC3																
M120	M400	-	FC10																
M150	M600	-	FC25																

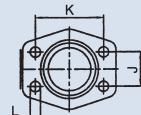
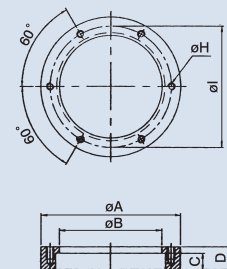
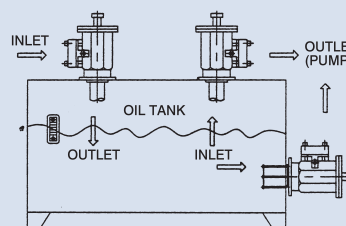
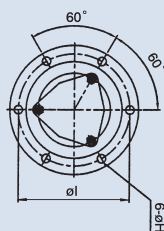
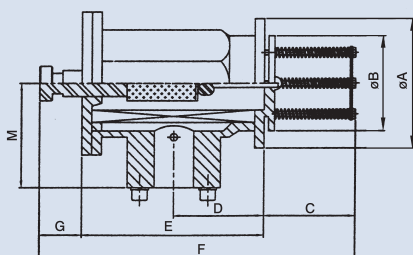
Specifications

Model	Port Size	Flow (lpm)		Dimensions (mm)													Fix. Bolt	Weight (kg)
		Suction	Return	A	B	C	D	E	F	G	H	I	J	K	L	M		
FSS-10-(B)	1-1/4"	250	160														M8 x 25 x 6pcs	6.5
FSS-12-(B)	1-1/2"	300	210	166	112	120	110	215	335	45	10	130	43	78	13	87		6.4
FSS-1602-(B)	2"	320	250															6.3
FSS-16-(B)	2"	400	300														M10 x 35 x 6pcs	10.6
FSS-20-(B)	2-1/2"	550	400	220	150	120	120	235	355	45	13	180	62	106	18	112		10.2
FSS-24-(B)	3"	700	520															9.6
FSS-28-(B)	3-1/2"	760	570	242	180	120	120	262	382	45	15	210	78	130	18	125	M12 x 35 x 6pcs	13.8
FSS-32-(B)	4"	820	630															13

Dimensions

FSS-✱

F-112-180 Unit: mm



Model	Dimensions (mm)				H Screw thd.	I Type of Fixing P.C.D.	Used For	Weight (kg)
	A	B	C	D				
F-112	150	112	15	20	M8	6 Hole x ø130	FSS10 (B)-1602 (B)	1.1
F-150	210	150	22	28	M10	6 Hole x ø180	FSS16 (B)-24 (B)	3.48
F-180	242	180	22	28	M12	6 Hole x ø210	FSS28 (B)-32 (B)	4.22

SUCTION OR RETURN LINE FILTER



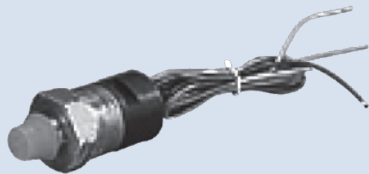
2" V-AD



TT-12



PS-41



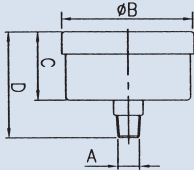
PS-82

Specifications

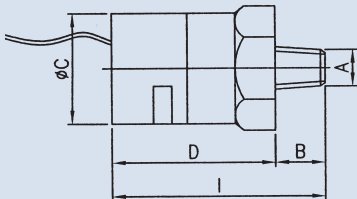
Model	Description	Prot Size A	Dimensions (mm)				Used For Filter		Weight (kg)
			B	C	D	I			
2" V-AD	Vacuum Gauge	PT 1/4	53	28	44	-	Suction line	PRI	0.1
PS82	Vacuum Switch	PT 1/4	14	28	38	52		FSS	0.08
TT-12	Pressure Gauge	PT 1/8	42	23	38	-	Return line	PRI-※-Y	0.06
PS41	Pressure Switch	PT 1/8	13	31	48	88		FSS-※-B CF	0.1
TK-K2	Difference Presure Switch-visual type	M18 x 1.5	-					PRI-※-Y	0.08
TK-5E		M20 x 1.5						-	
TK-Y2	Difference pressure switch-visual with electrical	M18 x 1.5						PRI-※-Y	0.1
TK-T2		M20 x 1.5						-	

Dimensions

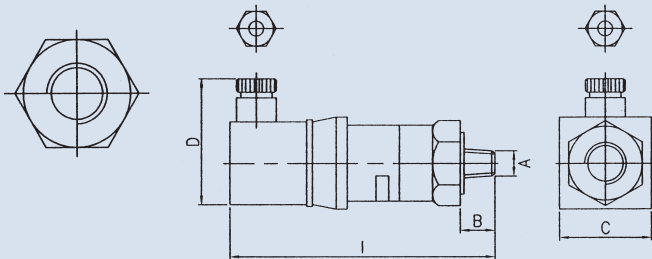
2"V-AD
TT-12



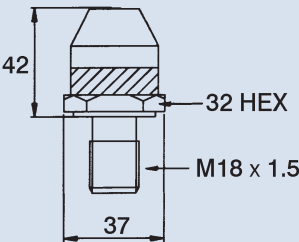
PS82



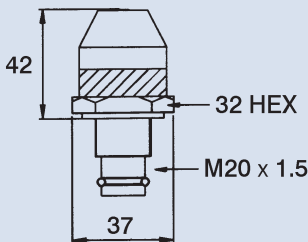
PS41



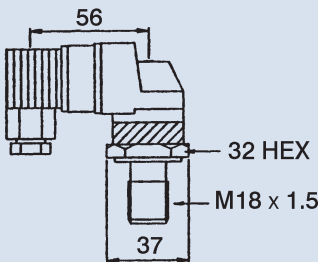
TK-K2



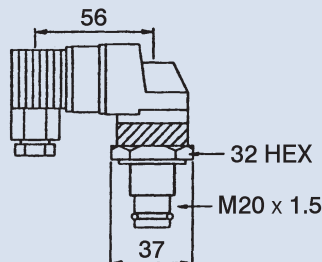
TK-5E



TK-Y2

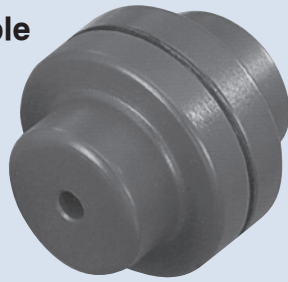


TK-T2

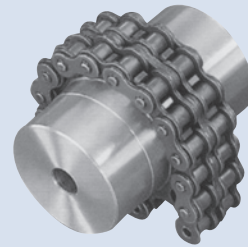
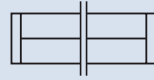


COUPLING

NM-Super flexible coupling



HT-Roller chain flexible coupling



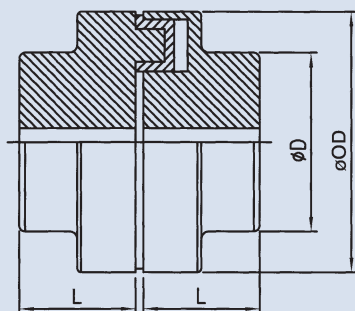
Specifications / Dimensions NM-Super flexible coupling

Model	Torque		Max. Speed (rpm)	Bore Diameter		Boss Dia. D	Outside Dia. OD	Distance Through boss L	Spare & Perm. Tolerance	Weight (kg)
	Normal Kg-m	Max. Kg-m		Min.	Max.					
NM-50	1.3	2.3	13500	7	19	33	50	25	2.5±0.5	0.48
NM-67	2.2	4	10000	9	28	46	67	30	2.5±0.5	1.02
NM-82	5.0	9	8000	10	32	53	82	40	3.0±1.0	1.88
NM-97	10.5	19	7000	12	42	69	97	50	3.0±1.0	3.54
NM-112	16.7	30	6000	14	48	79	112	60	3.5±1.0	5.40
NM-128	26.7	48	5000	18	55	90	128	70	3.5±1.0	8.10
NM-148	41.7	75	4500	22	65	107	148	80	3.5±1.0	13.5
NM-168	69.5	125	4000	28	75	126	168	90	3.5±1.0	19.3
NM-194	112	200	3500	32	85	140	194	100	3.5±1.0	26.3
NM-214	167	300	3000	45	95	157	214	110	4.0±2.0	35.7
NM-240	267	480	2750	60	110	179	240	120	4.0±2.0	46.7
NM-265	417	750	2500	70	120	198	265	140	5.5±2.0	66.3

HT-Roller chain flexible coupling

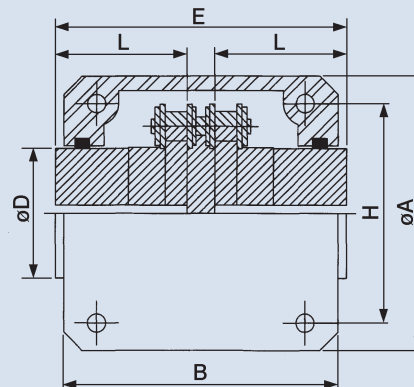
Model	Bore Diameter		E	L	D	H	Weight (kg)	Case	A	B	Weight (kg)
	Min.	Max.									
HT4012	11	22	80	36	35	61	0.8	HT4012	75	75	0.3
HT4016	15	30	80	36	50	77	1.4	HT4016	92	75	0.4
HT5016	15	40	100	45	60	96	2.6	HT5016	111	85	0.6
HT5018	19	45	100	45	70	106	3.5	HT5018	122	85	0.7
HT6018	22	55	120	54	85	128	6.2	HT6018	142	106	1.0
HT6022	25	75	120	54	110	152	9.8	HT6022	167	106	1.2
HT8018	30	78	150	67	115	170	13.9	HT8018	186	130	2.3
HT8022	35	95	150	67	140	202	20.2	HT8022	220	130	2.4
HT10020	35	110	201	91	160	228	34	HT10020	248	152	3.2
HT12018	48	120	261	119	170	252	51	HT12018	305	180	5.6
HT12022	58	150	261	119	210	300	66	HT12022	355	180	7.1

NM-Super flexible coupling



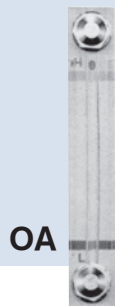
HT-Roller chain flexible coupling

Unit: mm

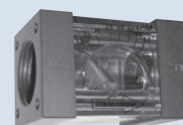


FLUID LEVEL & TEMPERATURE GAUGE, VISIBLE FLOW METER

Fluid level &
Temperature
gauge



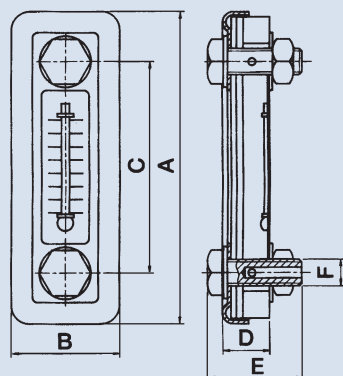
Visible flow meter



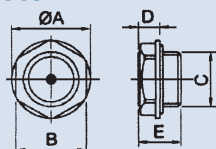
FMB

Dimensions

Fluid level & Temperature gauge



Fluid level

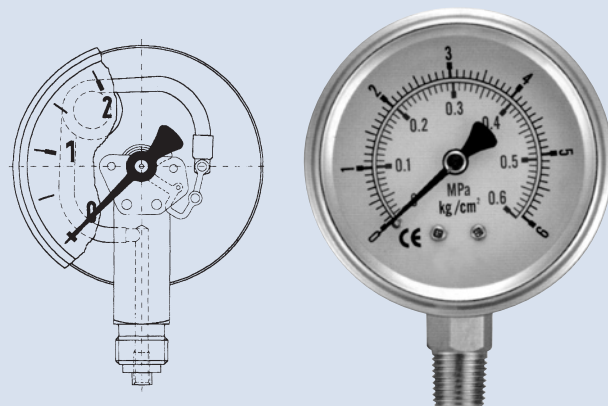


Model	Dimensions (mm)					Bolt Size F	Weight (kg)
	A	B	C	D	E		
LS-3"	118	41	80	18	37	M10	0.20
LS-5"	180	52	127	19.5	46	M12	0.35
GS-3"	102	38	76	20	39	3/8"	0.11
GS-5"	153	38	127	20	39	3/8"	0.15
OA-3"	105	25	76	13	46.5	M10	0.12
OA-4"	129	25	100	13	46.5	M10	0.13
OA-5"	155	25	127	13	46.5	M10	0.14
OA-68 mm	96	25	68	13	33	3/8"	0.11
OA-80 mm	109	25	80	12.5	46	M10	0.12
OA-120 mm	148	25	120	15	46.5	M10	0.14
OA-140 mm	170	25	140	20	46.5	M10	0.15
OA-148 mm	179	25	148	13	33	M10	0.17
OA-200 mm	230	28	200	25	54	M12	0.29
OA-230 mm	270	30	230	25	55	M12	0.34
OA-300 mm	330	28	300	25	63	M12	0.38
OA-400 mm	430	28	400	25	54	M12	0.44
OA-500 mm	530	28	500	25	54	M12	0.52
GA-60 mm	94	30	60	13	31	3/8"	0.07
GA-100 mm	126	30	100	13	31	3/8"	0.08
OL-3/4"	35	29	26	8	18	-	0.005

Specifications and Dimensions Visible flow meter

Model	Port Size	Max. Pressure (bar)	Flow (lpm)	Max. Temp. °C	Dimension WxHxL (mm)	Weight (kg)
FMC-18	PT 3/8"	10	18	115	Hex.22 x 67L	-
FMB-3A10L	NPT 3/8"		10		39 x 39 x 62	0.3
FMB-3A30L	NPT 3/8"		30			0.3
FMB-4A10L	NPT 1/2"		10			0.27
FMB-4A30L	NPT 1/2"		30			0.27
FMB-6A60L	NPT 3/4"		60		50.8 x 50.8 x 76.5	0.26
FMB-6A80L	NPT 3/4"		80			0.26
FMB-8A60L	NPT 1"		60			0.24
FMB-8A80L	NPT 1"		80			0.24
FMB-8A160L	PF 1"		160		57 x 64 x 120	0.79
FMB-10A160L	PF 1-1/4"		160			0.67
FMB-12A400L	PF 1-1/2"		400		76 x 83 x 140	1.3
FMB-16A400L	PF 2"		400			1.2

GLYCERINE BOURDON TUBE PRESSURE GAUGE



K

How to order

A - 2-1/2" - ✖

1 2 3

1 Type A: Bottom connection D: Back connection W/O flange AD: Back connection W/O flange with U-clamp BD: Back connection with flange

2 Dial diameter

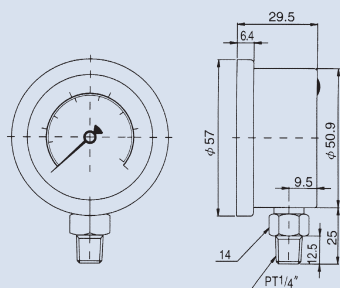
3 Pressure range

Specifications

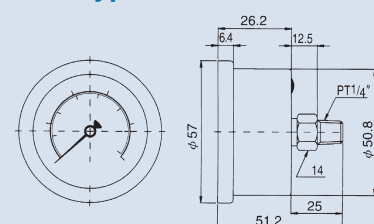
Dial Size	Case, Bezel	Thread	Socket	Bourdon Tube	Movement	Single, Dual Scale	Accuracy (% F.S.)	Ambient Temperature	Weight(kg)	
									A	BD
1-1/2"	SUS 304	1/8" PT, BSP, NPT	Brass or sus 316	Brass or sus 316	Brass or sus 304	psi, kpa, kg/cm², bar	1~2	-50 °F to 160 °F	0.1	0.1
2"		1/4" PT, BSP, NPT							0.18	0.16
2-1/2"									0.25	0.32
4"									3/8", 1/2" PT, BSP, NPT	0.73

Dimensions

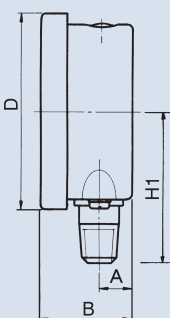
A-Type Dia. 2"



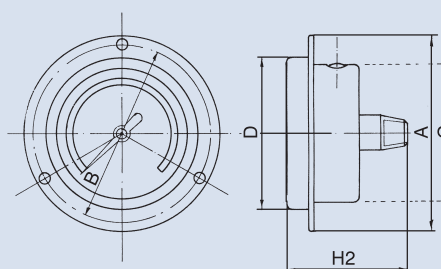
D-Type Dia. 2"



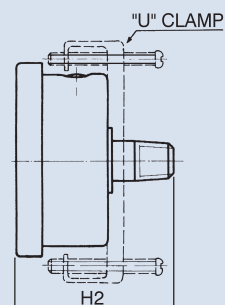
**A-Type
Dia. 2-1/2", 4"**



**BD-Type
Dia. 2-1/2", 4"**



AD-Type
Unit: mm



Type	Dia	D	A	B	C	Connector	
						H1	H2
A	2- 1/2"	70	11	33	-	58	-
	4"	107	11	33	-	80	-
BD	2- 1/2"	70	88	-	62	-	63
	4"	107	128	-	99	-	63

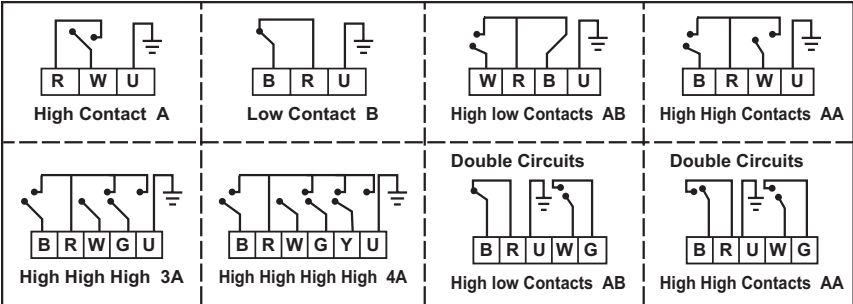
PRESSURE GAUGE WITH ELECTRIC CONTACT



How to order

EPG - 75 - A - ✖ - ✖ - ✖ - ✖									
1	2	3	4	5	6	7			
1	Model EPG: Electrical contact type			IPG: Explode-proof type		EEPG: No-contact type, Sensor control type			
	Model: EPG, IPG				Model: EEPG				
	Operating voltag	DC24~AC250	Carrying current	0.6 A max.		Operating voltag	DC24~AC250	Operating time	1.0 millisecond
	Switching power	30W~50VA max.	Contact pin material	Ag80 Ni20		Switching power	50VA	Releasing time	0.2 millisecond
	Making current	1.0 A max.	Ambient temp.	-20 °C to +70 °C		Breaking current	0.7A DC/AC	Operating Temperature	-40 °C to +125 °C
	Breaking current	1.0 A max.			Carrying current	1.5A DC/AC	Storage Temperature	-50 °C to +155 °C	
2	Dial diameter	75: 3" with 1/4" connect thread		100: 4" with 1/2" connect thread					
3	Mounting type	A: Bottom connection		A1: Bottom connection with PC case cover		B: Bottom connection with flange		D: Low back connection with flange	
4	Pressure range (kg/cm²)								
	76cmHg~0	76cmHg~6	0~1		0~10	0~50	0~350		
	76cmHg~1	76cmHg~10	0~2		0~15	0~70	0~400		
	76cmHg~2	76cmHg~15	0~3		0~20	0~100	0~500		
	76cmHg~3	76cmHg~20	0~4		0~25	0~150	0~700		
	76cmHg~4		0~7		0~35	0~250	0~1000		
5	Contact type	A: High contact-normal open		B: Low contact-normal closed					
6	Thread type	PT, NPT, PF							
7	Voltage	DC24~AC250V							

Circuit diagrams of contact devices



Coloring system of electric wires

B: Black
W: White
G: Green
Y: Yellow
R: Red (common)
U: Gray (earth)

Contact wires

A: W & R
B: B & R
AB: W (A), B (B) & R
AA: B (A1), W (A2) & R
3A: B (A1), W (A2), G (A3) & R
4A: B (A1), W (A2), G (A3), Y (A4) & R

Specifications

Gauge type: Pressure gauge, Vacuum gauge, Compound gauge

Scale: kg/cm², bar, kpa, mpa, psi

Case: chrome-plated steel

Lens: Acrylic

Pointer: Aluminum

Tubing: Brass or stainless steel AISI 316

Movement: Stainless steel AISI 304

Connection: Brass or stainless steel 304, 316

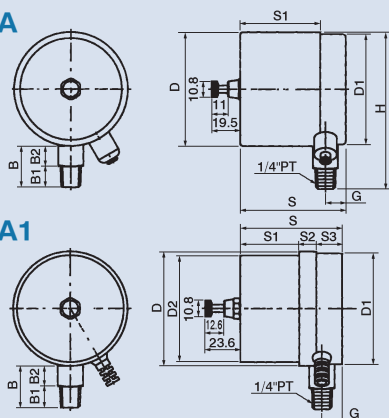
Accuracy: ±1.5% F.S

PRESSURE GAUGE WITH ELECTRIC CONTACT

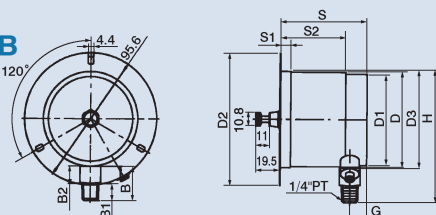
Dimensions

K

EPG-75-A

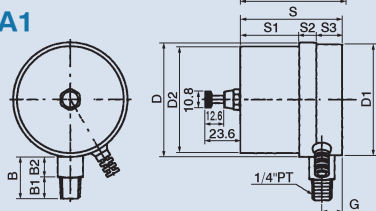


EPG-75-B

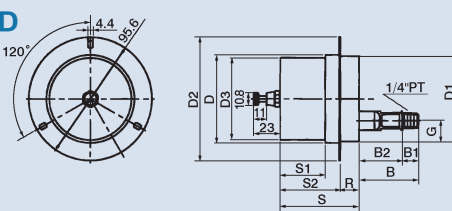


Unit: mm

EPG-75-A1

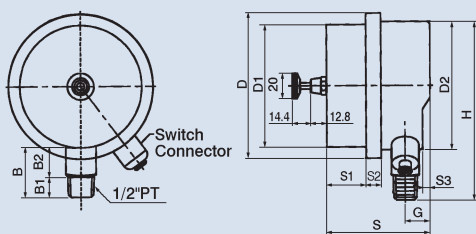


EPG-75-D

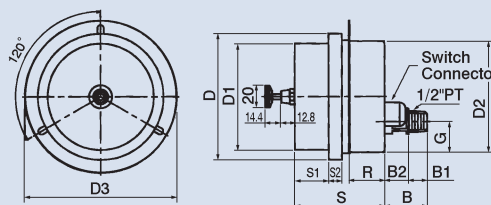


Model	D	D1	D2	D3	B	B1	B2	S	S1	S2	S3	R	G	H	Weight (kg)
EPG-75-A	77.6	74.8	-	-	28	14	14	71.5	54.1	-	-	-	13.8	106.2	0.5
EPG-75-A1	77.2	74.8	71.6	-	28	14	14	69.4	39.5	11.5	17.4	18.0	13.7	-	0.6
EPG-75-B	77.6	74.8	108	78.6	28.2	14	14.2	71	8.2	53	-	-	13.8	106.2	0.6
EPG-75-D	77.6	74.8	108	72	46	14	32.5	69.3	39.5	52.7	-	16.6	18.2	-	0.6

EPG
IPG-100-A

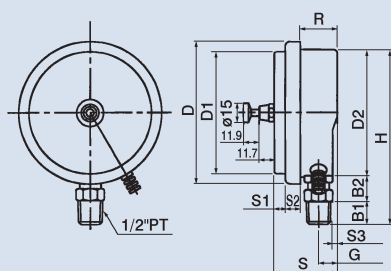


EPG
IPG-100-D

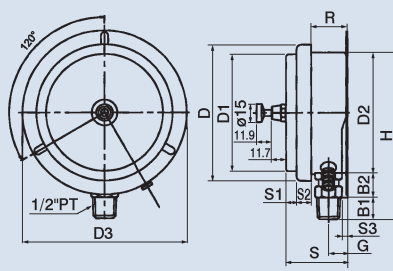


Model	D	D1	D2	D3	B	B1	B2	S	S1	S2	S3	R	G	H	Weight (kg)
EPG-100-A	115	97	101.6	-	34	16	18	82	31	12	6	-	20	141.5	0.86
IPG-100-A															
EPG-100-D	115	97	101.6	138.8	39	17	22	82	31	12	-	31.8	28	-	1
IPG-100-D															

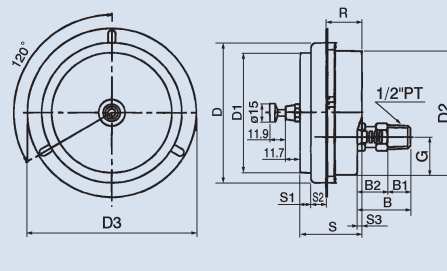
EEPG-100-A



EEPG-100-B



EEPG-100-D



Model	D	D1	D2	D3	B	B1	B2	S	S1	S2	S3	R	G	H	Weight(kg)
EEPG-100-A	111	95.2	98.4	-	-	18	24	49	8.5	12	3.5	28.5	14.5	136	0.8
EEPG-100-B	111	95.2	98.4	133.8	-	18	24	49	8.5	12	3.5	28.5	14.5	136	0.8
EEPG-100-D	111	95.2	98.4	133.8	42	18	24	49	8.5	12	3.5	28.5	30	-	0.8

DIGITAL PRESSURE GAUGE / SWITCH / TRANSDUCER



How to order

DPG - 75 - A120 - (200) or 15 - N - L - N - B - 1(DPS/PT) - 1(DPS only)

1	2	3	4	5	6	7	8	9	10
1	Model	DPG: Digital pressure gauge	DPS: Digital pressure switch	PT: Pressure transducer / transmitter (using D24 power only)					
2	Dial diameter	75: 3"							
3	Power	D24: 5~24 Volts DC input (2-wire wiring / 1.5 meters) A120: 100~120 Volts AC adapter (included) + D24 A240: 220~240 Volts AC adapter (included) + D24							
4	Pressure ranges (psi) / kg/cm ²	V: Vacuum							
	0~15: (15) / 1	0~30: (30) / 2	0~40: (40) / 3	0~60: (60) / 4	0~100: (100) / 7	0~140: (140) / 10			
	0~200: (200) / 15	0~280: (280) / 20	0~350: (350) / 25	0~500: (500) / 35	0~570: (570) / 40	0~700: (700) / 50			
	0~1000: (1.0K) / 70	0~1400: (1.4K) / 100	0~2100: (2.1K) / 150	0~2800: (2.8K) / 200	0~3500: (3.5K) / 250	0~4200: (4.2K) / 300			
	0~5000: (5.0K) / 350	0~5700: (5.7K) / 400	0~7000: (7.0K) / 500	0~8500: (8.5K) / 600	0~10000: (10K) / 700	0~15000: (15K) / 1000			
5	Type of connection	Standard: PT1/4"	N: NPT	P: PT (BSPT)	B: BSP (PF)				
6	Type of mounting	L: Lower mount	B: Lower back mount						
7	Flange	N: Without front flange	F: With front flange						
8	Default engineering unit	B: bar P: psi K: kg/cm ² M: MPa A: kPa 1: "Hg 2: cmHg 3: mmHg							
9	Output signal (PT only)	High setting points/contacts (DPS only)							
	1: 4~20 mA	2: 0~5 VDC	0: None	1: 1 High	2: 2 Highs				
	3: 0~10 VDC		3: 3 Highs	4: 4 Highs					
10	Low setting points/contacts (DPS only)								
	0: None	1: 1 Low	2: 2 Lows	3: 3 Lows	4: 4 Lows				

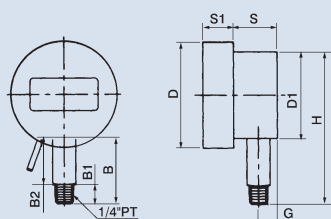
DIGITAL PRESSURE GAUGE / SWITCH / TRANSDUCER

Specifications

Model	DPG-75	DPS-75	PT-75
Accuracy	±1% Full scale		
Diameter	3 inches (78mm)		
Temperature Ranges	Operating/Medium: 14° ~ 392 °F / -10°~200 °C Storage: 14° ~ 122 °F / -10° ~ 50 °C Ambient: 14° ~ 167 °F / -10° ~ 75 °C		
Pressure Ranges	Negative (Vacuum) and Positive through 0~15000PSI		
Burst Pressure	30% Full scale		
Engineering Units	Vacuum bar, "Hg, cmHg, mmHg Positive bar, psi, kg/cm², MPa, kPa		
LCD Display	5-1/2 Digits LCD, Blue backlit-0.5 inches high		
Connection	Standard 1/4" PT		
Power Requirement	1.Input 100~120 VAC Adapter @ 60 Hz with output 5 VDC @ 1000 mA (included), or 2.Input 220~240 VAC Adapter @ 50 Hz with output 5 VDC @ 1000 mA (included), or 3.Input 5~24 VDC 2-wire wiring (1.5 meters)		Input 24 VDC 3-wire
Wetted parts	Standard brass or optional stainless steel AISI 304/316		
Case Material	ABS Plastic with black lacquered		
High Pressure Capture	Standard		
Face Membrane	Tactile feedback raised buttons		
Field Calibration	Zero adjustment		
Output Signal	N / A	5 VDC, 3~9 wires wiring (1.5 meters) depending on numbers of setting points/contacts purchased	1. Analog 4~20mA, 3-wire, or 2. 0~5 VDC, 3-wire, or 3. 0~10 VDC, 3-wire
Functional Relay	N / A	1~8 Setting points/contacts depending on numbers of setting points/contacts purchased input 24 VDC required	N / A
Pressure Setting Points Contacts	N / A	1~4 Highs 1~4 Lows Standard 1 High or low	N / A

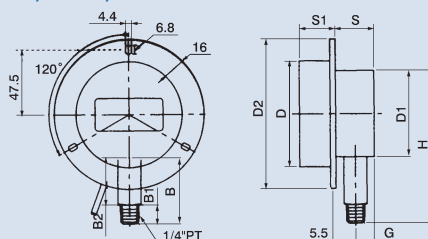
Dimensions

DPG/DPS/PT-75 Lower Mount

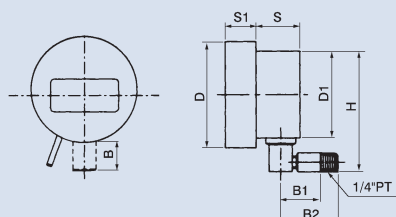


DPG/DPS/PT-75 Lower Mount With Flange

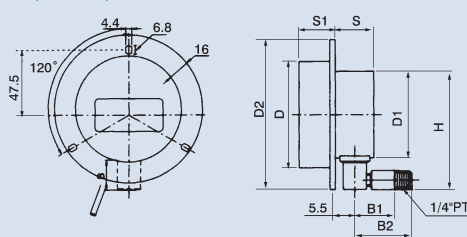
Unit: mm



DPG/DPS/PT-75 Lower Back Mount



DPG/DPS/PT-75 Lower Back Mount With Flange



Model	D	D1	D2	B	B1	B2	S	S1	G	H	Weight (kg)		
											DPG-75	DPS-75	PT-75
DPG/DPS/PT-75 Lower Mount	78	63.7	-	49	14	35	32.2	22.6	14	112.4	0.4	0.5	0.4
DPG/DPS/PT-75 Lower Mount With Flange	78	63.5	110	49	14	35	28.3	26.7	14	112.3	0.41	0.51	0.41
DPG/DPS/PT-75 Lower Back Mount	78	63.5	-	22	29.5	42	32.2	22.6	14	112.4	0.4	0.5	0.4
DPG/DPS/PT-75 Lower Back Mount With Flange	78	63.5	110	22	29.5	42	28.3	26.7	14	112.3	0.41	0.51	0.41