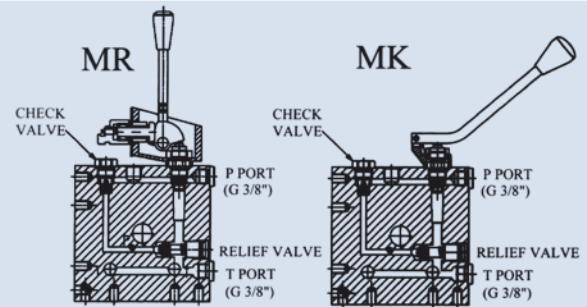
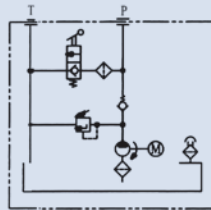
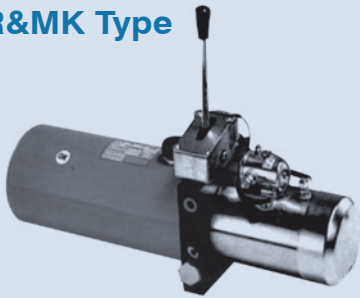


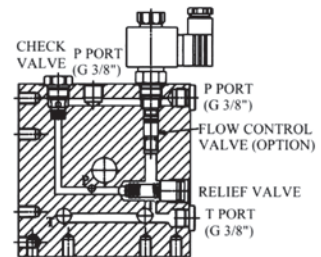
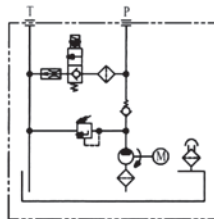
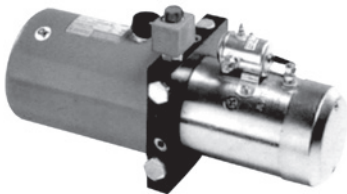
# POWER PACK

## Manifold functions

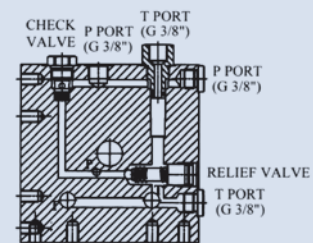
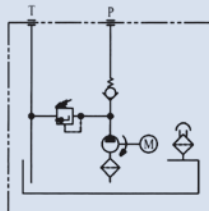
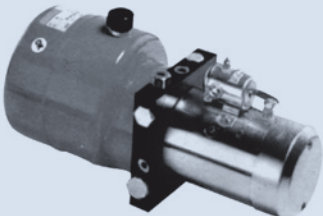
### MR&MK Type



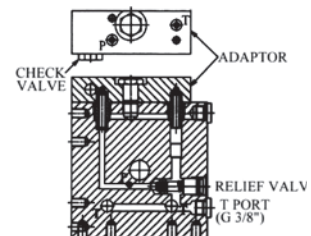
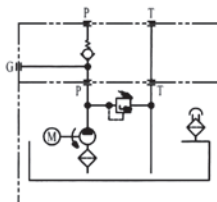
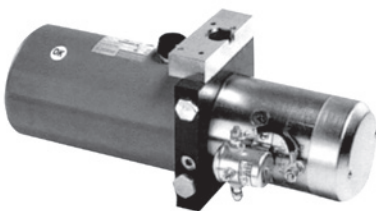
### "S" Type



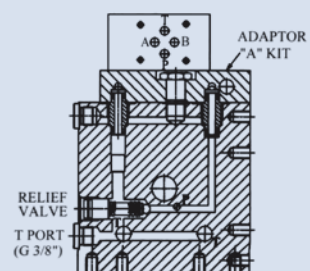
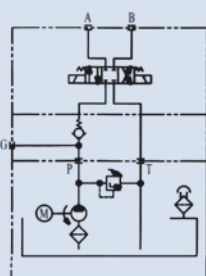
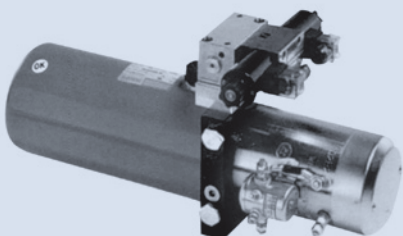
### "N" Type



### "A" Type



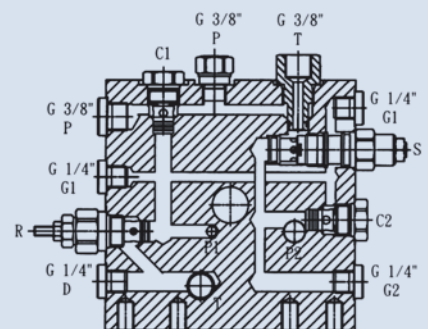
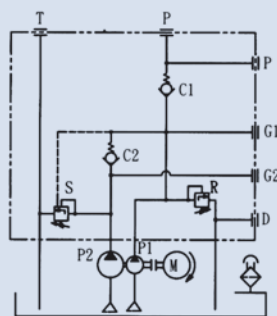
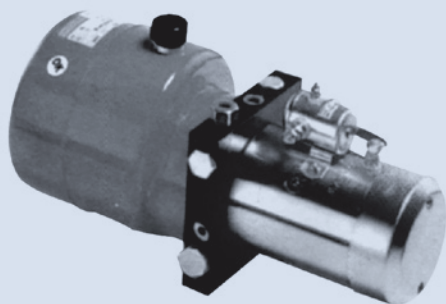
### "A" Type+Cetop 03



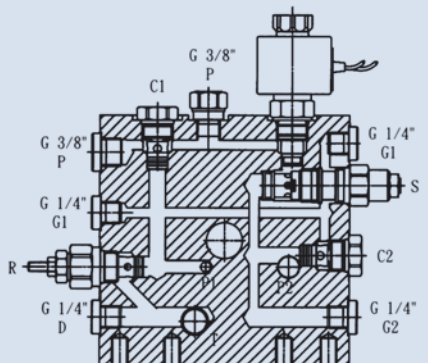
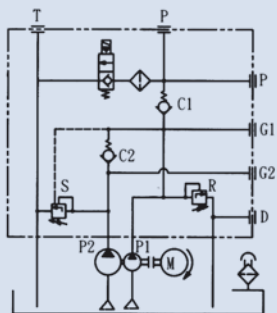
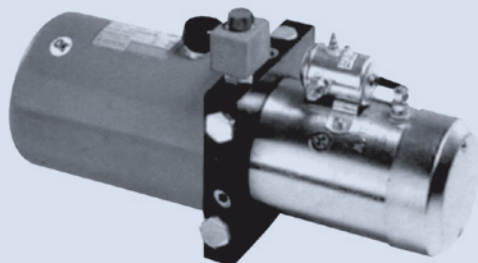
# POWER PACK

## Manifold functions Hi-Lo pressure

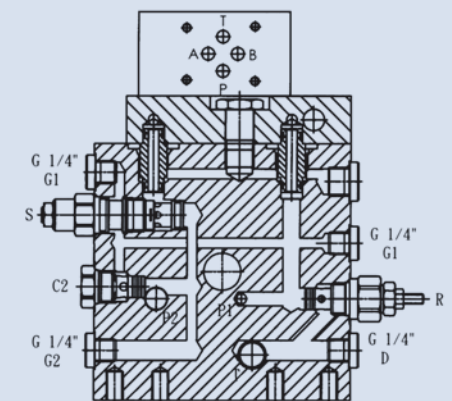
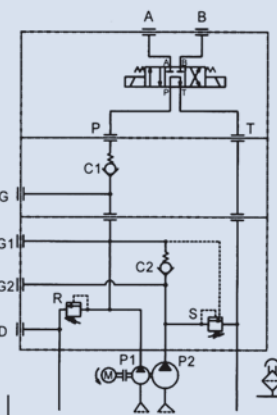
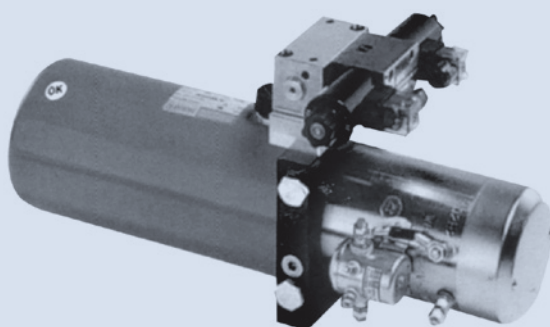
### "N" Type



### "S" Type



### "A" Type+ Cetop 03



## How to order

1      2      3      4      5      6      7      8      9      10

P158

# POWER PACK AC MOTORS

## How to order

**MF** - **□** - **01** - **H** - **10** - **S** - **10** - **※** - **A** - **A** - **N** - **D** **※※※**

1 2 3 4 5 6 7 8 9 10 11 12

### 1 AC motor

Motor dimension

Ø110	MSN	Motor without fan	Only 1/4HP
Ø140	MFS	Motor with fan	From 1/2HP to 1HP
	MSS	Motor without fan	

XX: Special

Motor dimension

Ø125	MSM	Motor without fan	From 1/2HP to 1HP
Ø160	MF	Motor with fan	From 1HP to 3HP
	MS	Motor without fan	

### 2 AC motor

Standard voltages and hertz (refer to below)

A-ZZ Special voltages and hertz on request

### 3 AC motor

Motor	Power	Phase	Voltages	Hertz	Rpm	Motor	Power	Phase	Voltages	Hertz	Rpm
01	1HP 4P	3	220/380	50/60	1420/1720	10	3HP 2P	3	220/380	50/60	2850/3450
02	1HP 2P	3	220/380	50/60	2850/3450	11	1/2HP 4P	1	110/220	50/60	1420/1720
03	1HP 4P	1	110/220	50/60	1420/1720	12	1/2HP 2P	1	110/220	50/60	2850/3450
04	1HP 2P	1	110/220	50/60	2850/3450	13	3/4HP 4P	1	110/220	50/60	1420/1720
05	2HP 4P	3	220/380	50/60	1420/1720	14					
06	2HP 2P	3	220/380	50/60	2850/3450	15	1/2HP 4P	3	220/380	50/60	1420/1720
07	2HP 4P	1	110/220	50/60	1420/1720	16	1/2HP 6P	3	220/380	50/60	940/1140
08	2HP 2P	1	110/220	50/60	2850/3450	17	1/4HP 4P	1	110/220	50/60	1420/1720
09	3HP 4P	3	220/380	50/60	1420/1720	18	1/4HP 4P	3	220/380	50/60	1420/1720

### 4 Mounting type

H: Horizontally mounted V: Vertically mounted X: Special mounting

HN: Horizontally mounted without tank VN: Vertically mounted without tank

### 5 Tank size

ø140 mm Dia				ø180 mm Dia				XX: Special NN: None (working volume)
10	1.0 Liters	24	2.4 Liters	30	3.0 Liters	60	6.0 Liters	
16	1.6 Liters	28	2.8 Liters	40	4.0 Liters	80	8.0 Liters	
20	2.0 Liters	42	4.2 Liters	50	5.0 Liters			

### 6 Lowering valve

S: Solenoid operated (normally closed) T: Solenoid operated (normally open)

U: Solenoid operated (normally closed with manual) V: Solenoid operated (normally open with manual)

MR: Manual operated MK: Manual operated (without switch) N: None X: Special operated A: Adaptor for other manifold

### 7 Pump capacity

05: 0.5 cc/rev 07: 0.7 cc/rev 10: 1.0 cc/rev 15: 1.5 cc/rev 19: 1.9 cc/rev 23: 2.3 cc/rev  
27: 2.7 cc/rev 30: 3.0 cc/rev 35: 3.5 cc/rev 40: 4.0 cc/rev 51: 5.1 cc/rev 62: 6.2 cc/rev 73: 7.3 cc/rev

### 8 Hand pump

None: Without hand pump P: With hand pump (7.4 cc/stroke) X: Special hand pump assembly

### 9 Wire box positions A: Same side as check valve B: Same side as relief valve C: The side opposite A D: The side opposite B N: None

### 10 Breather cap positions A: Same side as check valve B: Same side as relief valve C: The side opposite A D: The side opposite B N: None

### 11 Flow control valve

N: None 2: 2 lpm 4: 4 lpm 6: 6 lpm 8: 8 lpm 10: 10 lpm (rated flows)

### 12 Unique code

Manifold function A-Z	
	Standard manifold
D	Standard manifold
	With low noise relief valve