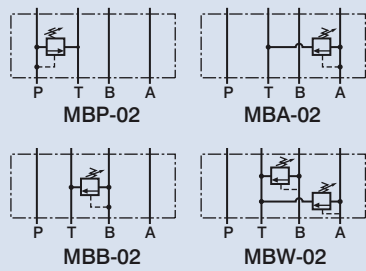


MODULAR RELIEF VALVE

FEATURES:

- Back pressure in tank port should be as low as possible. (under 5 bar)
- In case the valves are used as safety valves, pressure setting should be higher than max. circuit pressure by 10~15 bar.



How to order

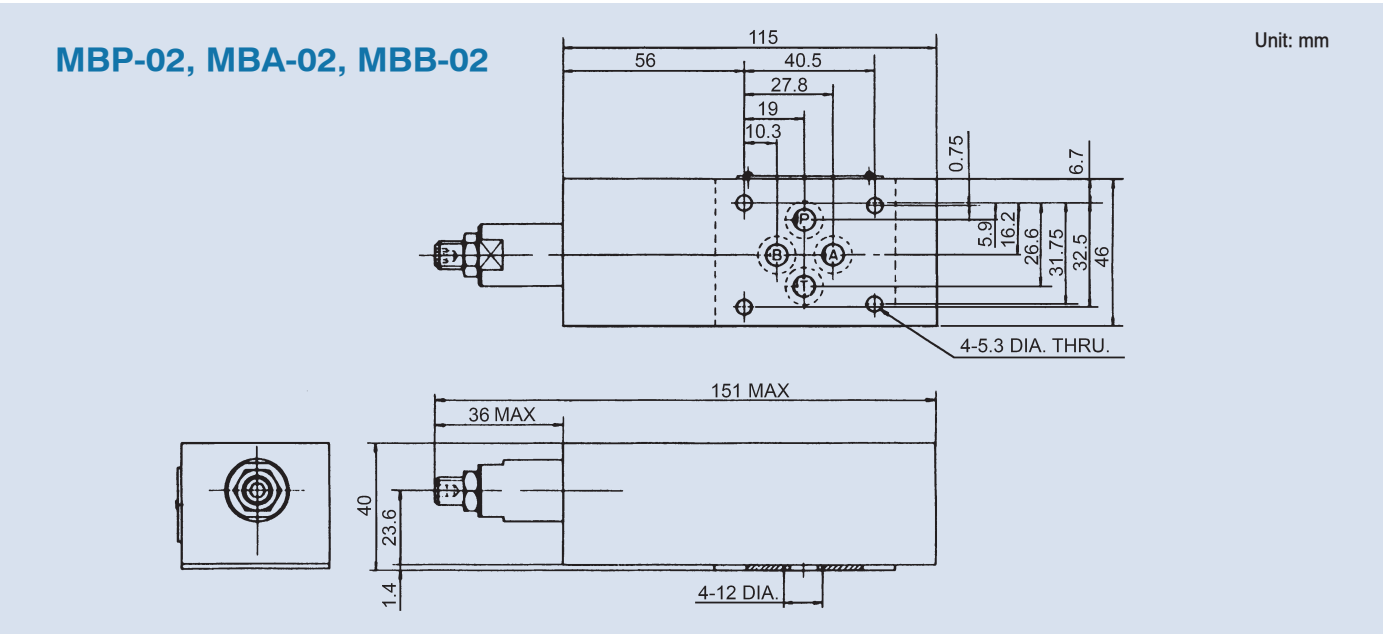
MB P - 02 - ✖ - ✖

1	2	3	4	5
1	Model			
2	Control port P: P port A: A port B: B port W: A and B ports			
3	Nominal valve size 02: 1/4" (ISO CETOP 3, NFPA D03, DIN NG 6)			
4	Pressure adjusting range B: 7~70 bar C: 7~140 bar H: 10~230 bar			
5	Adjustment option None: Tool adjustment K: Hand-bar adjustment			

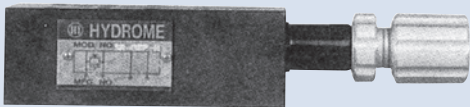
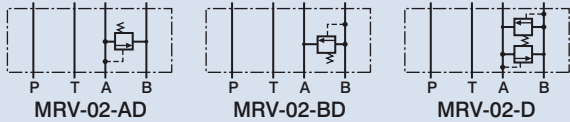
Specifications

Model	Max. Operating Pressure (bar)	Pressure Adj. Range (bar)	Max. Flow (lpm)	Weight (kg)
MBP-02	250	B: 7~70	35	1.4
MBA-02		C: 7~140		1.4
MBB-02		H: 10~230		1.4
MBW-02				2

Dimensions



MODULAR BRAKE VALVE



D

How to order

MRV - 02 - AD - ✖ - ✖

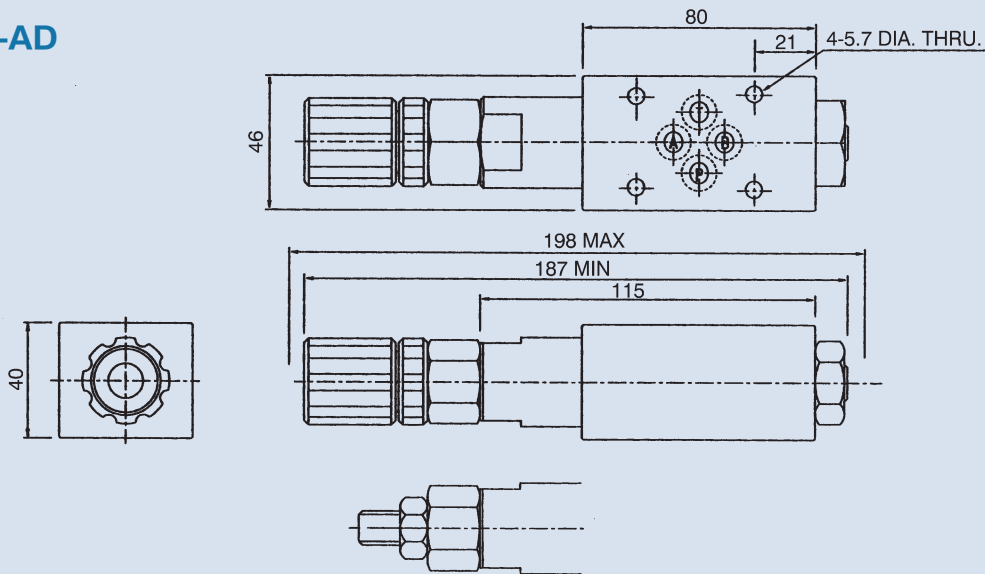
1	2	3	4	5
1	Model			
2	Nominal valve size 02: 1/4" (ISO CETOP 3, NFPA D03, DIN NG 6)			
3	Control port			
4	Pressure adjusting range B: 10~70 bar H: 10~210 bar			
5	Adjustment option None: Tool adjustment K: Hand-bar adjustment			

Specifications

Model	Max. Operating Pressure (bar)	Pressure Adj. Range (bar)	Max. Flow (lpm)	Weight (kg)
MRV-02-AD	315	B: 10~70	30	1.8
MRV-02-BD				1.8
MRV-02-D		H: 10~210		2.0

Dimensions

MRV-02-AD

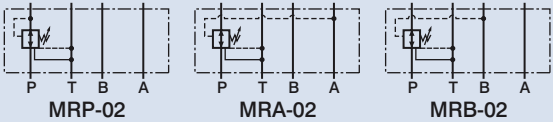
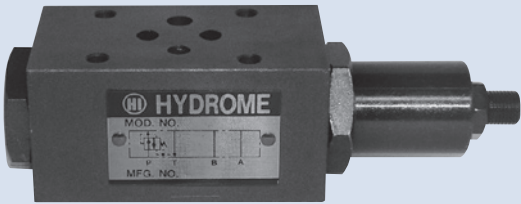


Unit: mm

MODULAR PRESSURE REDUCING VALVE

FEATURES:

- Drain port should be connected to tank.
- Pressure difference between primary pressure and secondary pressure should be maintained over 10 bar for good pressure reduction.
- Pressure cannot be adjusted if a certain flow rate cannot be obtained.



How to order

MR P - 02 - ✖ - ✖

1 2 3 4 5

1	Model
2	Control port P: P port A: A port B: B port
3	Nominal valve size 02: 1/4" (ISO CETOP 3, NFPA D03, DIN NG 6)
4	Pressure adjustment range S: 3~35 bar B: 7~70 bar C: 35~140 bar
5	Adjustment option None: Tool adjustment K: Hand-bar adjustment

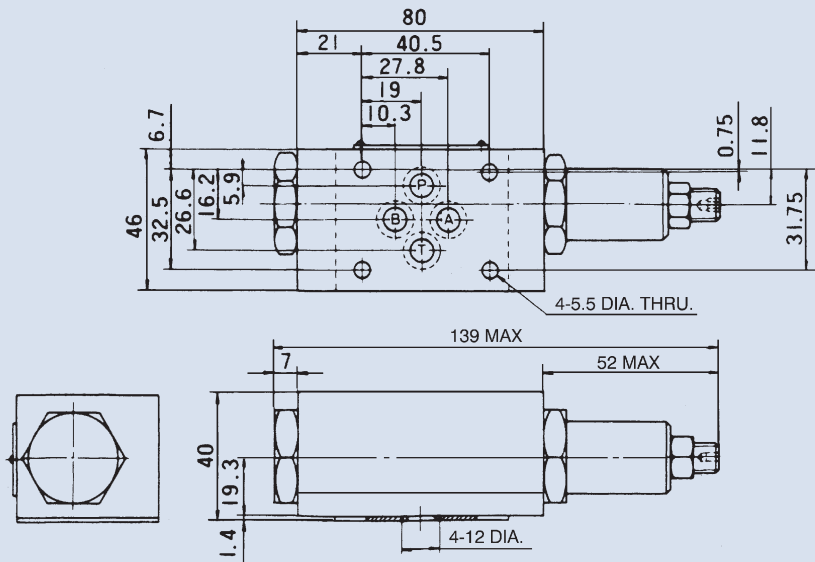
Specifications

Model	Max. Operating Pressure (bar)	Pressure Adj. Range (bar)	Max. Flow (lpm)	Weight (kg)
MRP-02	210	S: 3~35	35	1.1
MRA-02		B: 7~70		1.1
MRB-02		C: 35~140		1.1

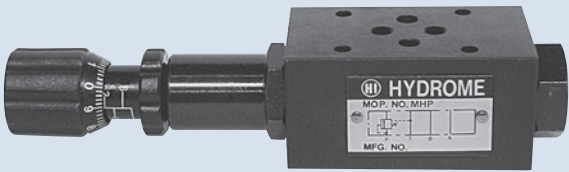
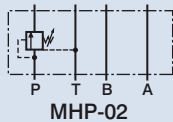
Dimensions

MRB-02

Unit: mm



MODULAR SEQUENCE VALVE



D

How to order

MH P - 02 - ✖ - ✖

1 2 3 4 5

- 1 Model
- 2 Control port P: P port
- 3 Nominal valve size 02: 1/4" (ISO CETOP 3, NFPA D03, DIN NG 6)
- 4 Pressure adjusting range C: 8~140 bar H: 10~210 bar
- 5 Adjustment option None: Tool adjustment K: Hand-bar adjustment

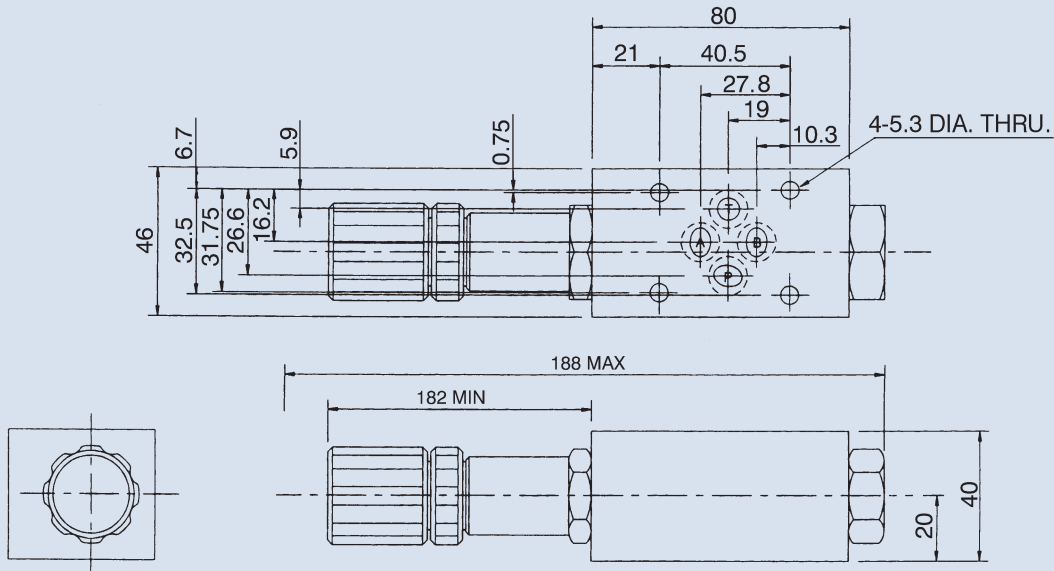
Specifications

Model	Max. Operating Pressure (bar)	Pressure Adj. Range (bar)	Max. Flow (lpm)	Weight (kg)
MHP-02	230	C: 8~140 H: 10~210	40	1.2

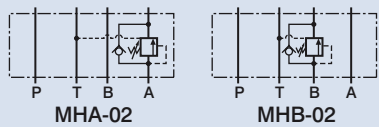
Dimensions

MHP-02

Unit: mm



MODULAR COUNTERBALANCE VALVE



How to order

MH A - 02 - ✖ - ✖

1	2	3	4	5
1	Model			
2	Control port A: A port B: B port			
3	Nominal valve size 02: 1/4" (ISO CETOP 3, NFPA D03, DIN NG 6)			
4	Pressure adjusting range C: 7~140 bar H: 10~210 bar			
5	Adjustment option None: Tool adjustment K: Hand-bar adjustment			

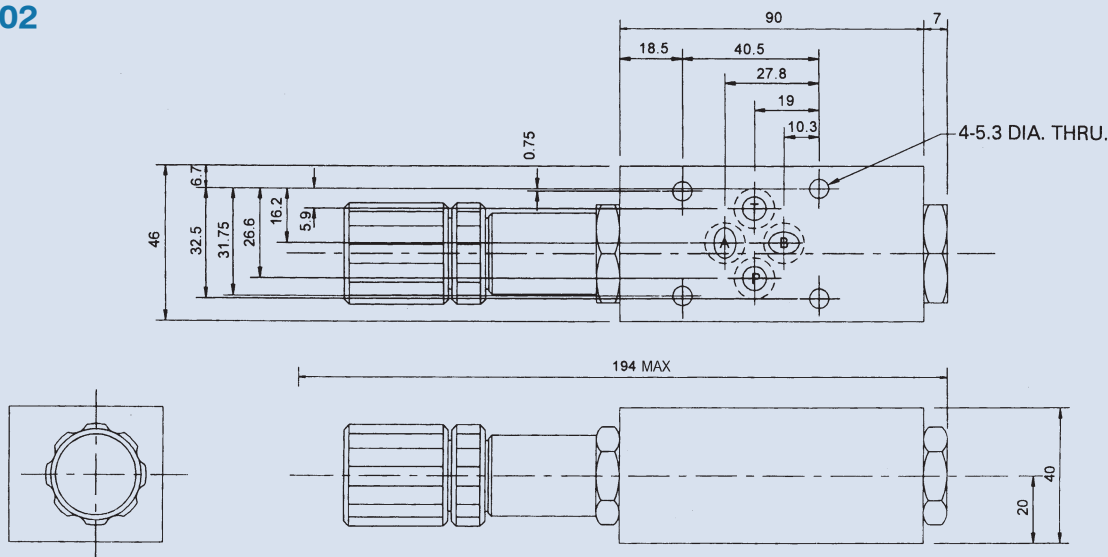
Specifications

Model	Max. Operating Pressure (bar)	Pressure Adj. Range (bar)	Max. Flow (lpm)	Weight (kg)
MHA-02	230	C: 7~140	40	1.4
MHB-02		H: 10~210		1.4

Dimensions

MHB-02

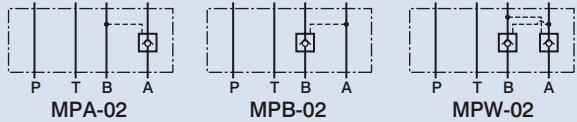
Unit: mm



MODULAR PILOT OPERATED CHECK VALVE

FEATURES:

- Area ratio: 2.5:1
- Cracking pressure of check valve is 2 bar.
- The valve is the internal drain type.



D

How to order

MP W - 02

1	2	3
1	Model	
2	Control port A: A port B: B port W: A and B ports	
3	Nominal valve size 02: 1/4" (ISO CETOP 3, NFPA D03, DIN NG 6)	

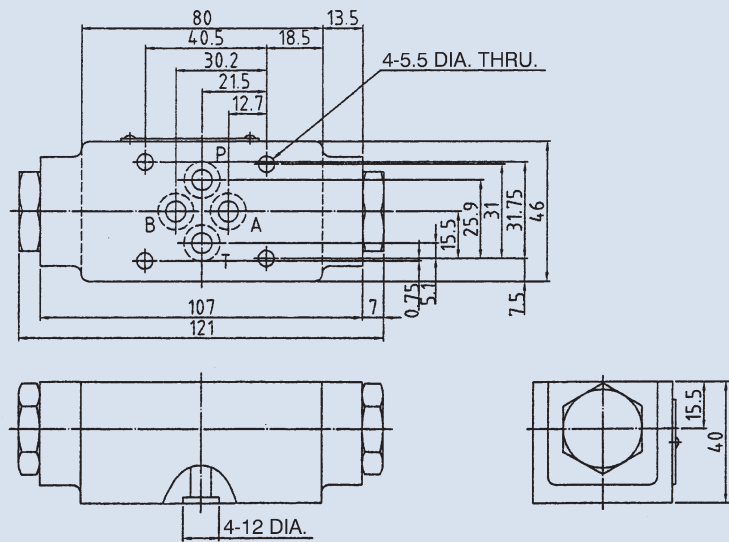
Specifications

Model	Max. Operating Pressure (bar)	Cracking Pressure (bar)	Max. Flow (lpm)	Weight (kg)
MPA-02	280	2: 2	35	1.0
MPB-02		4: 4		1.0
MPW-02				1.1

Dimensions

MPW-02

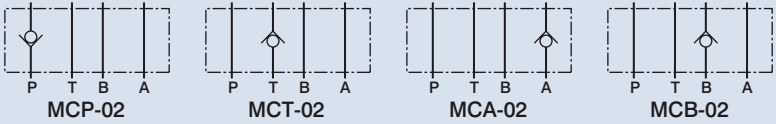
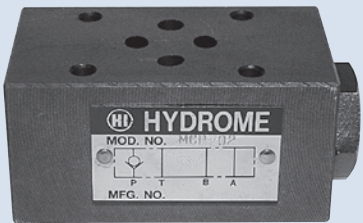
Unit: mm



MODULAR CHECK VALVE

FEATURES:

- When the valve is installed upside down by means of the gasket plate, P port check type is changed to T port check type and T port check type to P port check type.



How to order

MC P - 02 - ✖

1	2	3	4
1	Model		
2	Control port	P: P port	T: T port
3	Nominal valve size	02: 1/4" (ISO CETOP 3, NFPA D03, DIN NG 6)	
4	Cracking pressure	0: 0.35 bar	2: 2 bar

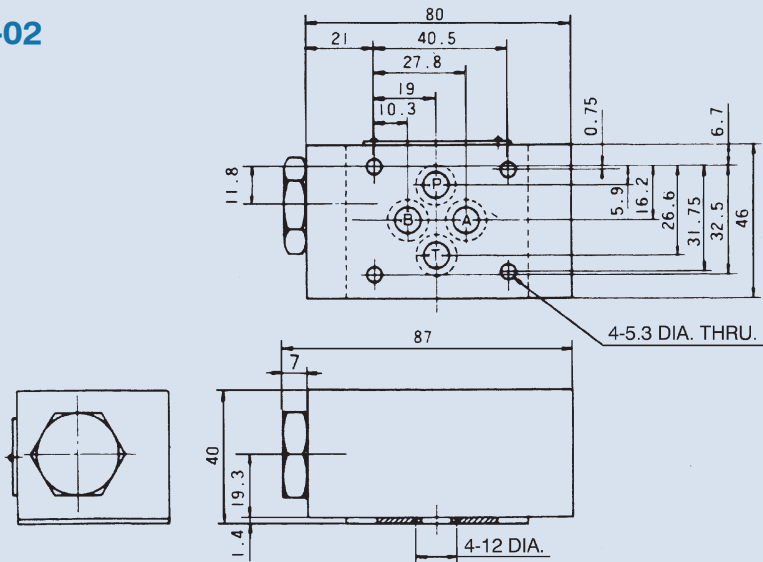
Specifications

Model	Max. Operating Pressure (bar)	Cracking Pressure (bar)	Max. Flow (lpm)	Weight (kg)
MCP-02	280	0: 0.35 2: 2	35	0.9
MCT-02				0.9
MCA-02				1.0
MCB-02				1.0

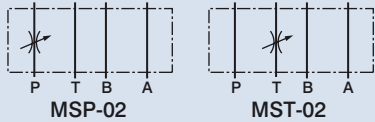
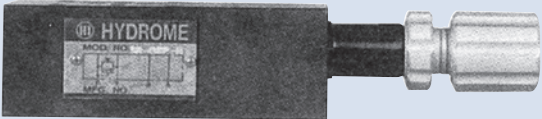
Dimensions

MCP-02, MCT-02

Unit: mm



MODULAR THROTTLE VALVE



D

How to order

MS P - 02 - ✱

1	2	3	4
1	Model		
2	Control port P: P port T: T port		
3	Nominal valve size 02: 1/4" (ISO CETOP 3, NFPA D03, DIN NG 6)		
4	Adjustment option None: Tool adjustment K: Hand-bar adjustment		

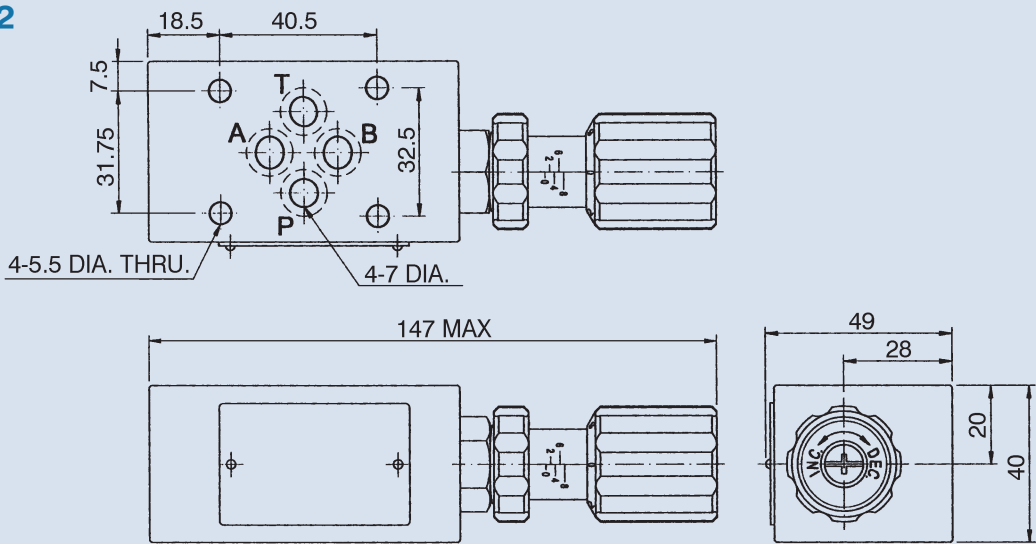
Specifications

Model	Max. Operating Pressure (bar)	Flow Adj. Range (lpm)	Max. Flow (lpm)	Weight (kg)
MSP-02	280	0.3~25	50	1.2
MST-02				1.2

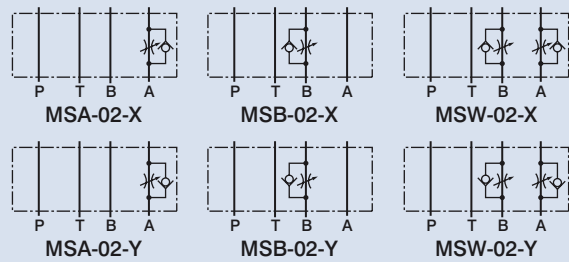
Dimensions

MSP-02

Unit: mm



MODULAR THROTTLE AND CHECK VALVE



How to order

MS W - 02 - ✖ - ✖

1 2 3 4 5

- 1 Model
- 2 Control port A: A port B: B port W: A and B ports
- 3 Nominal valve size 02: 1/4" (ISO CETOP 3, NFPA D03, DIN NG 6)
- 4 Control type X: Meter-out Y: Meter-in
- 5 Adjustment option None: Tool adjustment K: Hand-bar adjustment

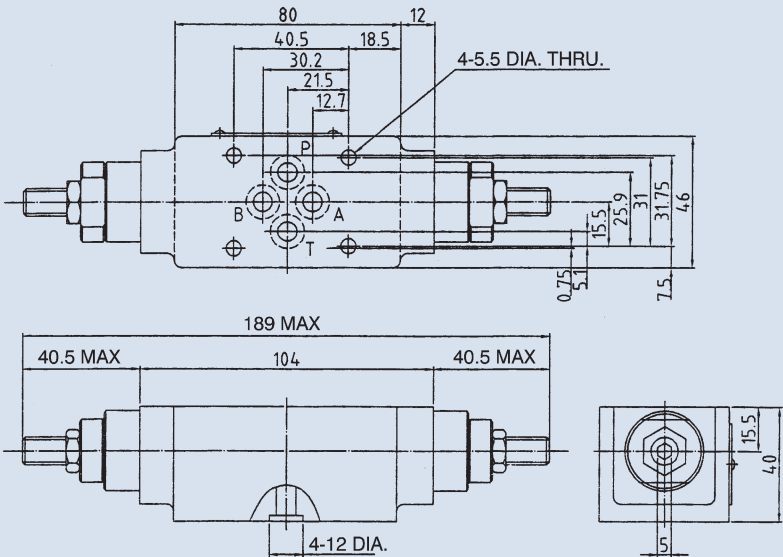
Specifications

Model	Max. Operating Pressure (bar)	Flow Adj. Range (lpm)	Max. Flow (lpm)	Weight (kg)
MSA-02	280	0.3~25	50	1.1
MSB-02				1.1
MSW-02				1.3

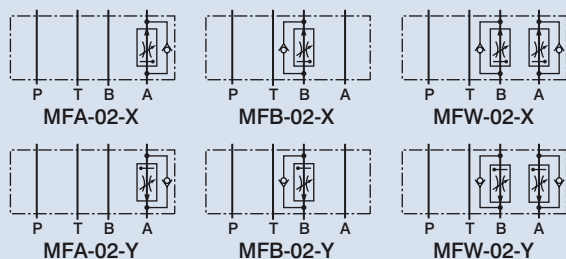
Dimensions

MSW-02

Unit: mm



MODULAR PRESSURE AND TEMPERATURE COMPENSATED FLOW CONTROL VALVE



D

How to order

MF W - 02 - ✖

1 2 3 4

1	Model
2	Control port A: A port B: B port W: A and B ports
3	Nominal valve size 02: 1/4" (ISO CETOP 3, NFPA D03, DIN NG 6)
4	Control type X: Meter-out Y: Meter-in

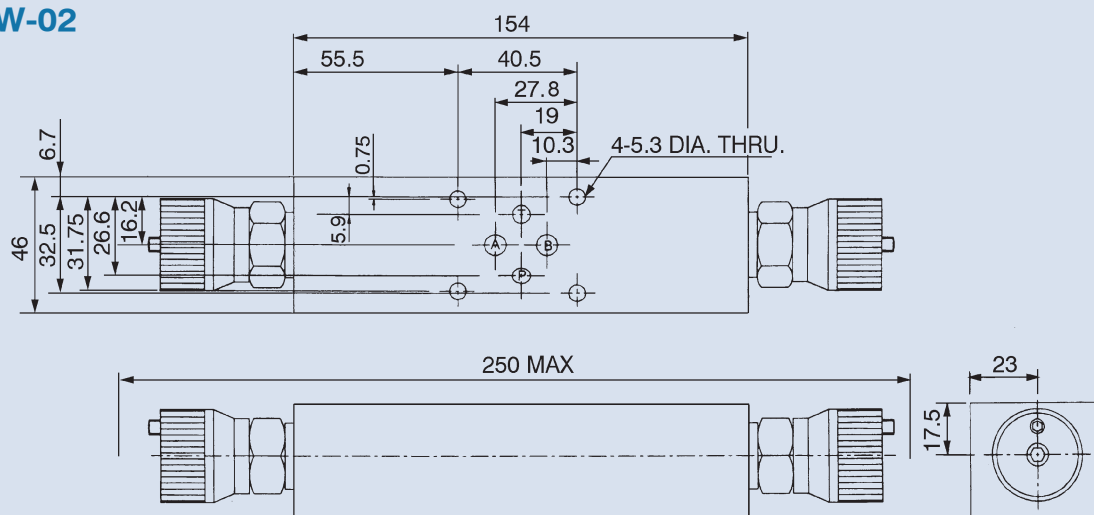
Specifications

Model	Max. Operating Pressure (bar)	Max. Flow (lpm)	Weight (kg)
MFA-02	210	35	2.0
MFB-02			2.0
MFW-02			2.2

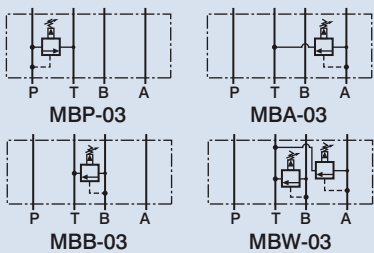
Dimensions

MFW-02

Unit: mm



MODULAR RELIEF VALVE



How to order

MB P - 03 - ✖ - ✖

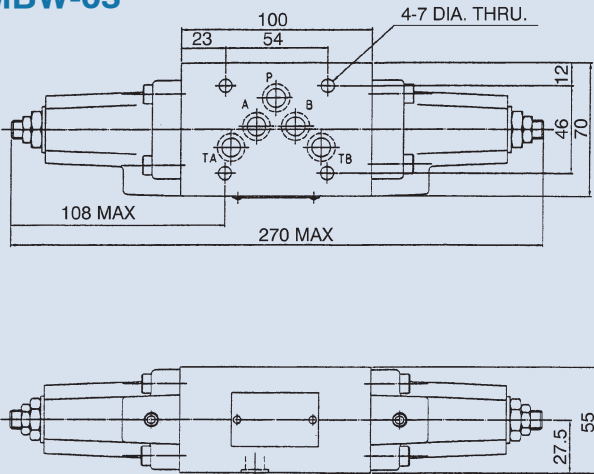
1	2	3	4	5
1	Model			
2	Control port P: P port A: A port B: B port W: A and B ports			
3	Nominal valve size 03: 3/8" (ISO CETOP 5, NFPA D05, DIN NG 10)			
4	Pressure adjusting range B: 7~70 bar H: 10~230 bar			
5	Adjustment option None: Tool adjustment K: Hand-bar adjustment			

Specifications

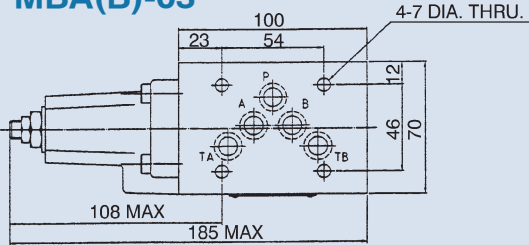
Model	Max. Operating Pressure (bar)	Pressure Adj. Range (bar)	Max. Flow (lpm)	Weight (kg)
MBP-03	250	B: 7~70 H: 10~230	70	3.5
MBA-03				3.5
MBB-03				3.5
MBW-03				4.3

Dimensions

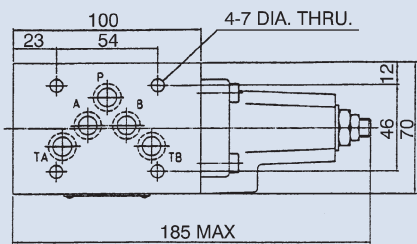
MBW-03



MBA(B)-03



MBP-03

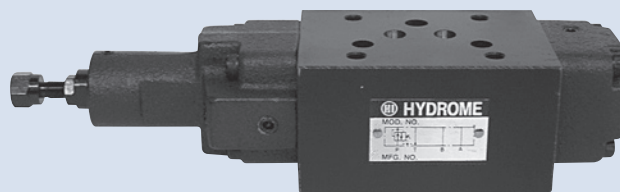


Unit: mm

MODULAR PRESSURE REDUCING VALVE

FEATURES:

- Drain port should be connected to tank.
- Pressure difference between primary pressure and secondary pressure should be maintained over 10 bar for good pressure reduction.



D

How to order

MR P - 03 - ✖ - ✖

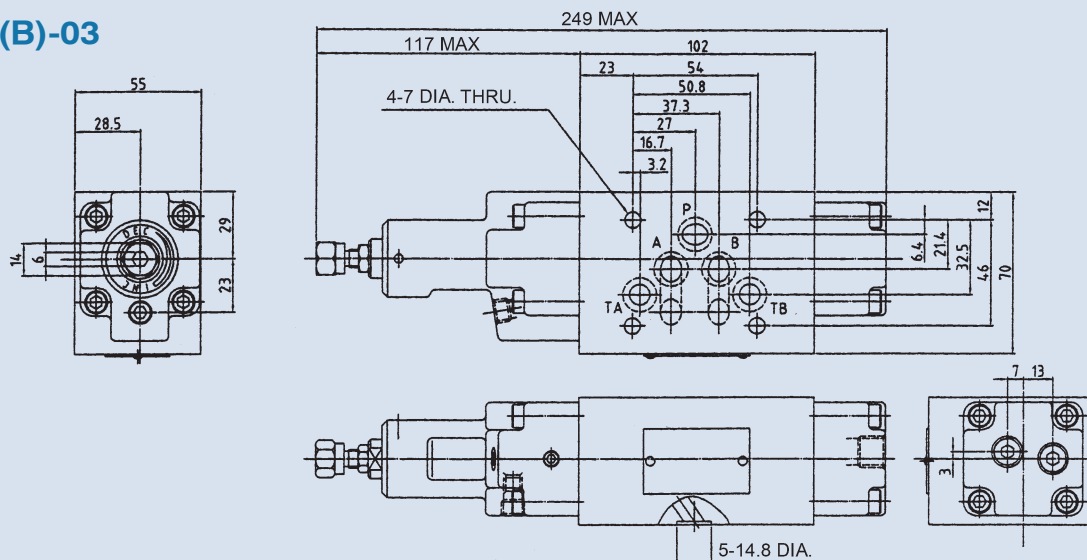
1	2	3	4	5
1	Model			
2	Control port P: P port A: A port B: B port			
3	Nominal valve size 03: 3/8" (ISO CETOP 5, NFPA D05, DIN NG 10)			
4	Pressure adjusting range S: 3~35 bar B: 7~70 bar C: 35~140 bar			
5	Adjustment option None: Tool adjustment K: Hand-bar adjustment			

Specifications

Model	Max. Operating Pressure (bar)	Pressure Adj. Range (bar)	Max. Flow (lpm)	Weight (kg)
MRP-03	210	S: 3~35	70	4.0
MRA-03		B: 7~70		4.0
MRB-03		C: 35~140		4.0

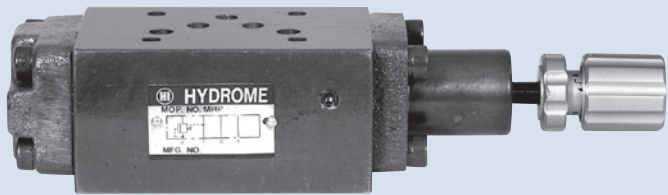
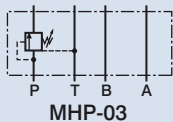
Dimensions

MRP(B)-03



Unit: mm

MODULAR SEQUENCE VALVE



How to order

MHP - 03 - ✖ - ✖

1 2 3 4

1	Model
2	Nominal valve size 03: 3/8" (ISO CETOP 5, NFPA D05, DIN NG 10)
3	Pressure adjusting range B: 10~70 bar H: 20~210 bar
4	Adjustment option None: Tool adjustment K: Hand-bar adjustment

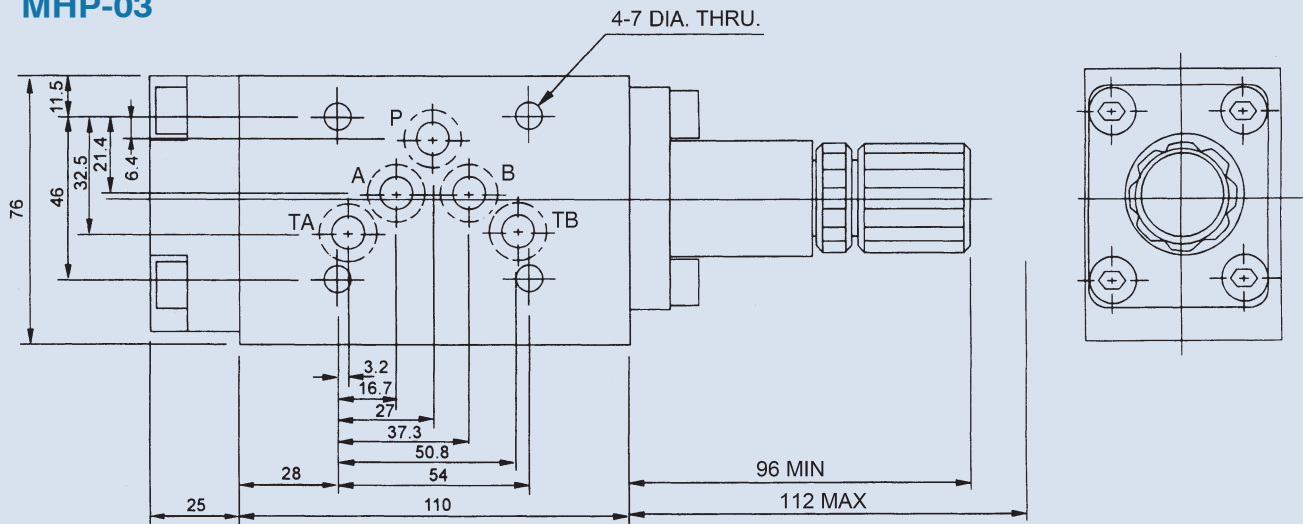
Specifications

Model	Max. Operating Pressure (bar)	Pressure Adj. Range (bar)	Max. Flow (lpm)	Weight (kg)
MHP-03	230	B: 10~70 H: 20~210	80	4.2

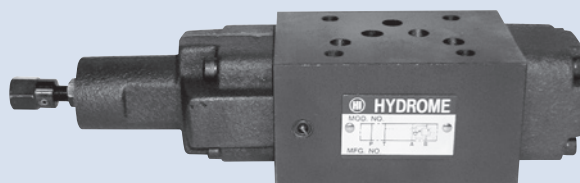
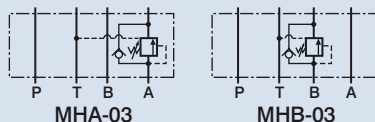
Dimensions

MHP-03

Unit: mm



MODULAR COUNTERBALANCE VALVE



D

How to order

MH A - 03 - ✱ - ✱

1 2 3 4 5

- 1 Model
- 2 Control port A: A port B: B port
- 3 Nominal valve size 03: 3/8" (ISO CETOP 5, NFPA D05, DIN NG 10)
- 4 Pressure adjustment range B: 8~70 bar H: 20~210 bar
- 5 Adjustment option None: Tool adjustment K: Hand-bar adjustment

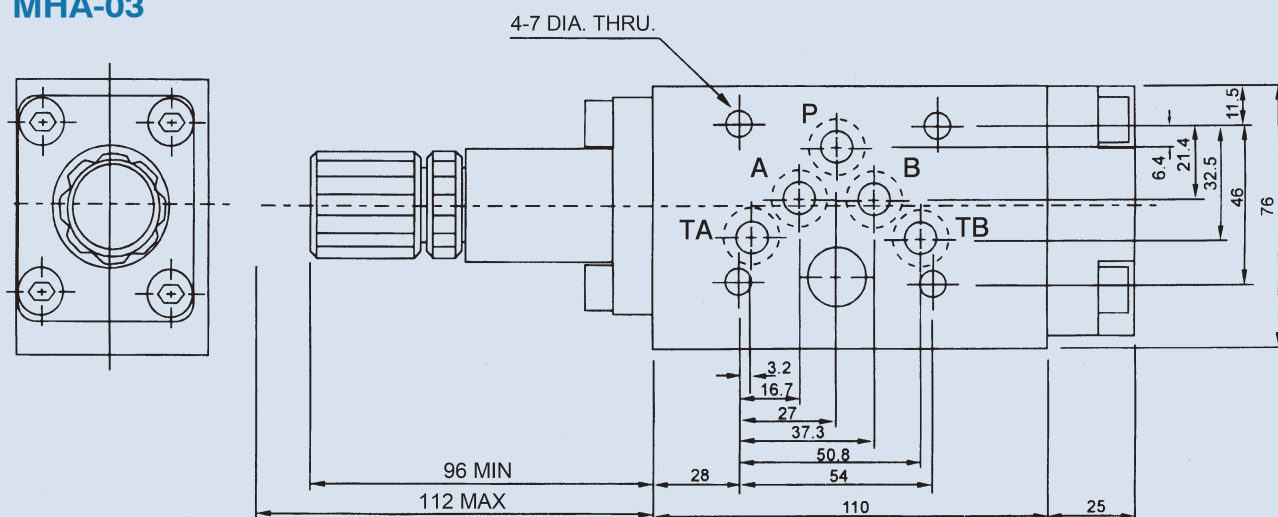
Specifications

Model	Max. Operating Pressure (bar)	Pressure Adj. Range (bar)	Max. Flow (lpm)	Weight (kg)
MHA-03	230	B: 8~70	70	4.2
MHB-03		H: 20~210		4.2

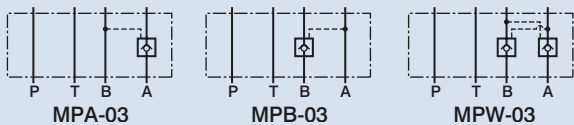
Dimensions

MHA-03

Unit: mm



MODULAR PILOT OPERATED CHECK VALVE



How to order

MP W - 03

1	2	3
1	Model	
2	Control port	A: A port B: B port W: A and B ports
3	Nominal valve size 03: 3/8" (ISO CETOP 5, NFPA D05, DIN NG 10)	

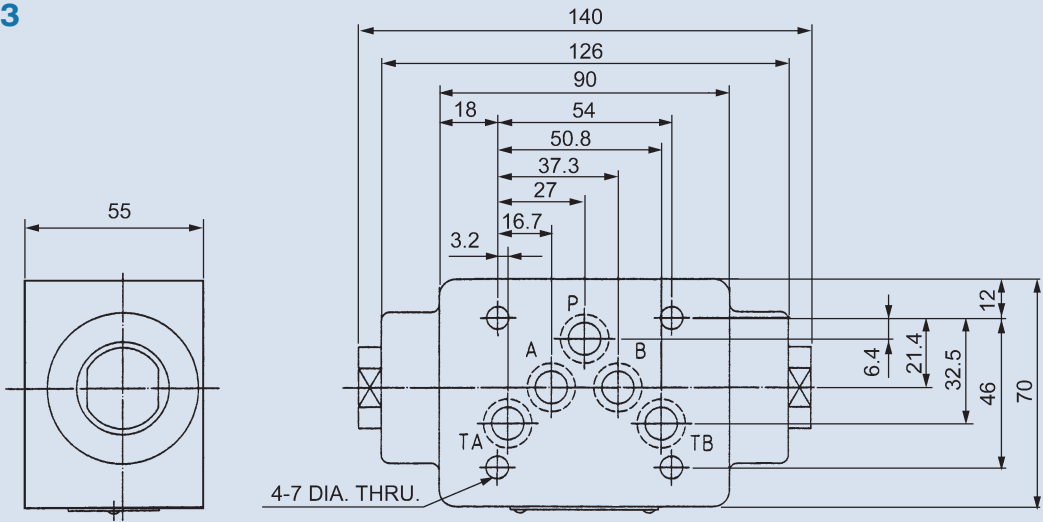
Specifications

Model	Max. Operating Pressure (bar)	Cracking Pressure (bar)	Max. Flow (lpm)	Weight (kg)
MPA-03	250	2: 2	70	3.0
MPB-03		4: 4		3.0
MPW-03				3.2

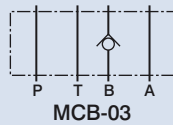
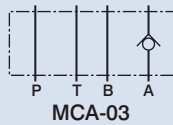
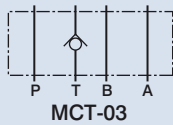
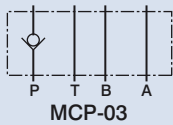
Dimensions

MPW-03

Unit: mm



MODULAR CHECK VALVE



D

How to order

MC P - 03 - ✱

1	2	3	4
1	Model		
2	Control port P: P port T: T port A: A port B: B port		
3	Nominal valve size 03: 3/8" (ISO CETOP 5, NFPA D05, DIN NG 10)		
4	Cracking pressure 0: 0.35 bar 2: 2 bar		

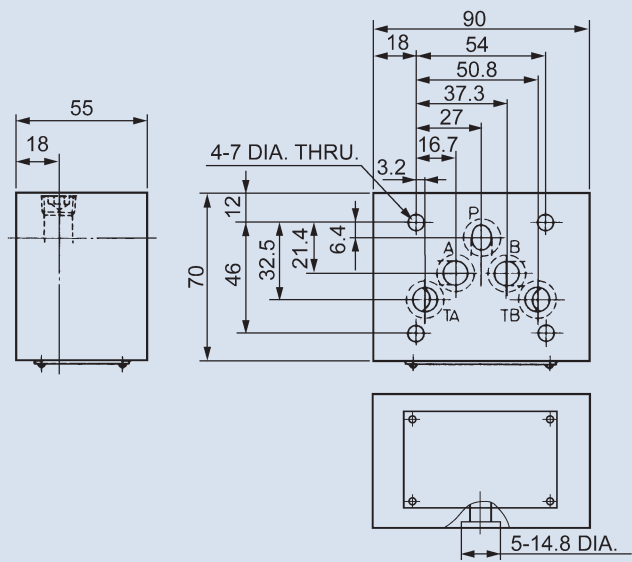
Specifications

Model	Max. Operating Pressure (bar)	Cracking Pressure (bar)	Max. Flow (lpm)	Weight (kg)
MCP-03	250	0: 0.35 2: 2	70	2.1
MCT-03				2.1
MCA-03				2.8
MCB-03				2.8

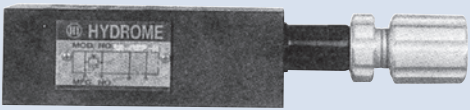
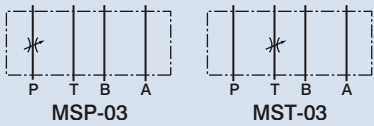
Dimensions

MCP-03

Unit: mm



MODULAR THROTTLE VALVE



How to order

MS P - 03 - ✱

1	2	3	4
1	Model		
2	Control port P: P port T: T port		
3	Nominal valve size 03: 3/8" (ISO CETOP 5, NFPA D05, DIN NG 10)		
4	Adjustment option None: Tool adjustment K: Hand-bar adjustment		

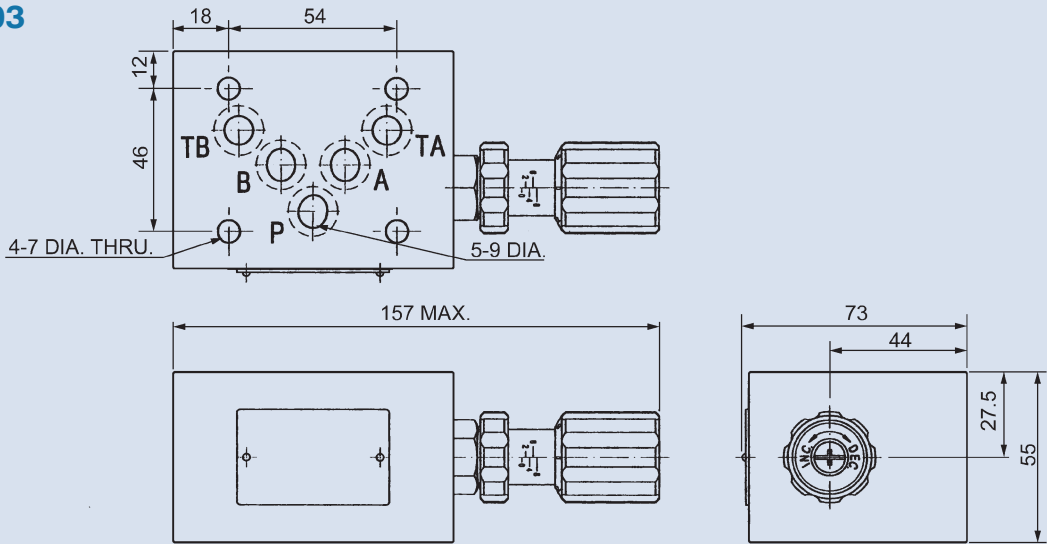
Specifications

Model	Max. Operating Pressure (bar)	Flow Adj. Range (lpm)	Max. Flow (lpm)	Weight (kg)
MSP-03	250	0.5~60	70	2.5
MST-03				2.5

Dimensions

MSP-03

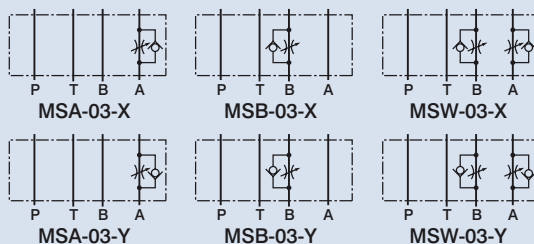
Unit: mm



MODULAR THROTTLE AND CHECK VALVE

FEATURES:

- Clockwise rotation of the adjusting screw reduces flow rate and counterclockwise rotation increases it.
- Since the valve is of the spool type, oil flow cannot be shut off completely.



D

How to order

MS W - 03 - ✖ - ✖

1	Model
2	Control port A: A port B: B port W: A and B ports
3	Nominal valve size 03: 3/8" (ISO CETOP 5, NFPA D05, DIN NG 10)
4	Control type X: Meter-out Y: Meter-in
5	Adjustment option None: Tool adjustment K: Hand-bar adjustment

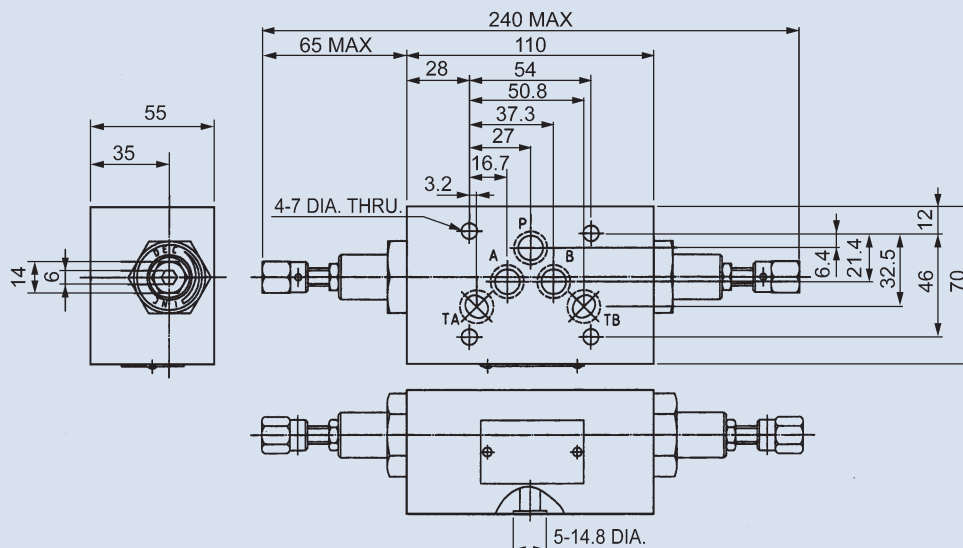
Specifications

Model	Max. Operating Pressure (bar)	Flow Adj. Range (lpm)	Max. Flow (lpm)	Weight (kg)
MSA-03	250	0.5~60	70	2.3
MSB-03				2.3
MSW-03				3.1

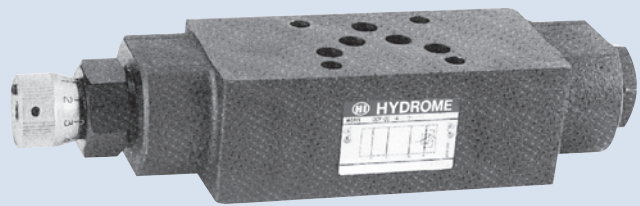
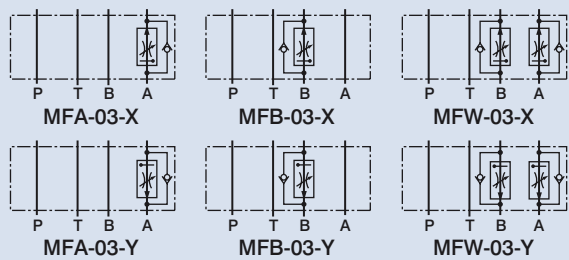
Dimensions

MSA-03

Unit: mm



MODULAR PRESSURE AND TEMPERATURE COMPENSATED FLOW CONTROL VALVE



How to order

MF W - 03 - ✱

- | | |
|---|---|
| 1 | Model |
| 2 | Control port A: A port B: B port W: A and B ports |
| 3 | Nominal valve size 03: 3/8" (ISO CETOP 5, NFPA D05, DIN NG 10) |
| 4 | Control type X: Meter-out Y: Meter-in |

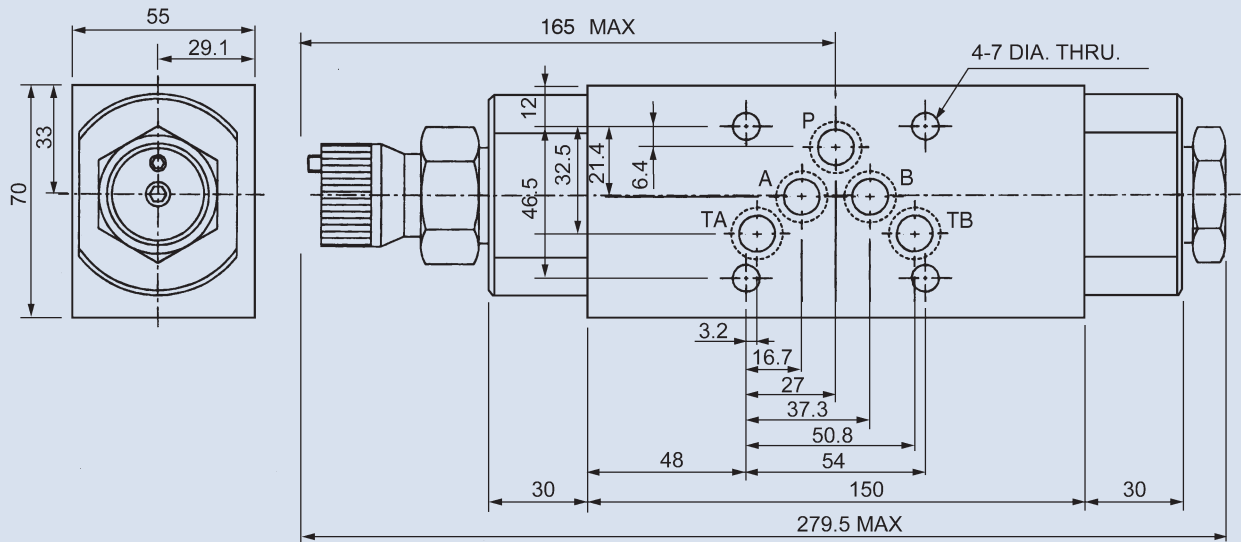
Specifications

Model	Max. Operating Pressure (bar)	Max. Flow (lpm)	Weight (kg)
MFA-03	210	80	5.0
MFB-03			5.0
MFW-03			5.5

Dimensions

MFA-03

Unit: mm

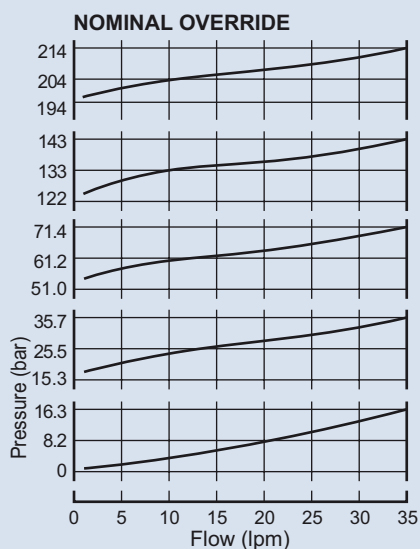
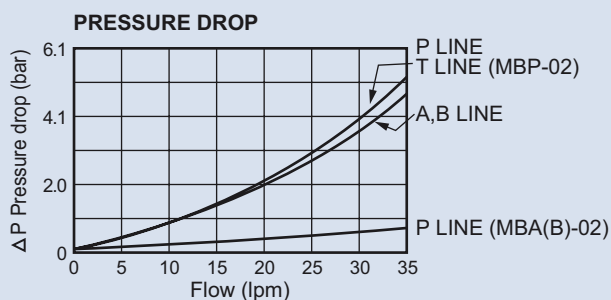
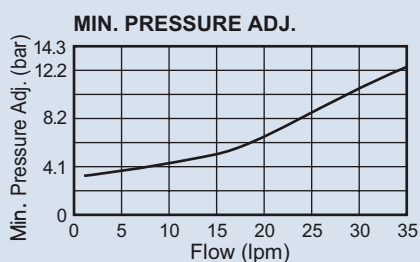


PERFORMANCE CURVES FOR MODULAR VALVES- MBP(A,B)-02, MRP(A,B)-02, MHA(B)-02

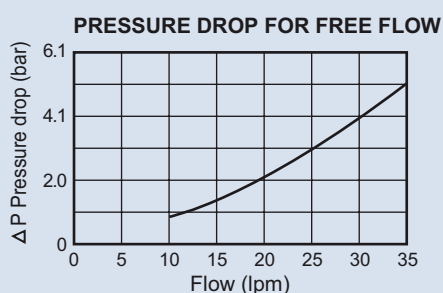
Performance curves

Test fluid viscosity: 35 cst
Test temperature: 50 °C

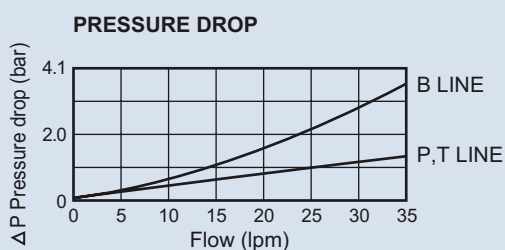
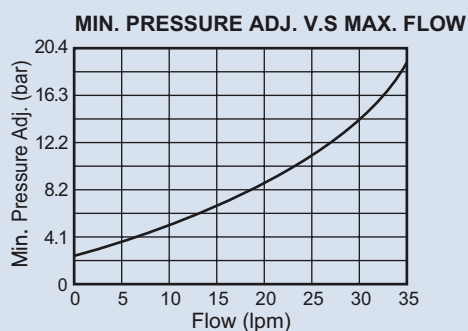
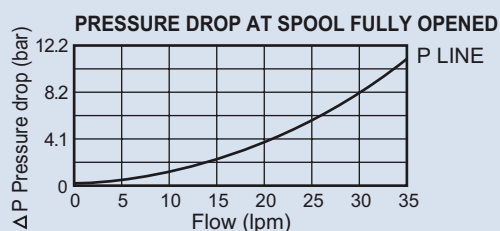
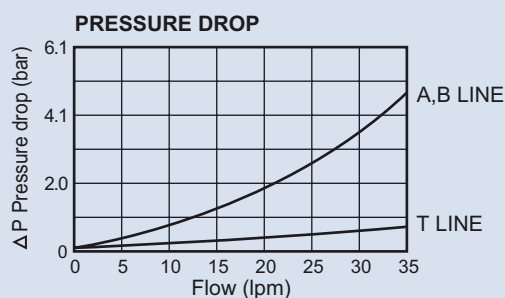
MBP(A,B)-02



MHA(B)-02



MRP(A,B)-02



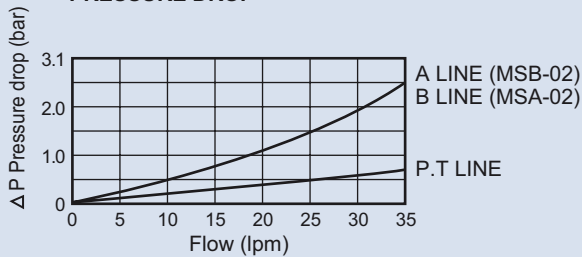
PERFORMANCE CURVES FOR MODULAR VALVES- MSW(A,B)-02, MPW(A,B)-02, MCP(T,A,B)-02

Performance curves

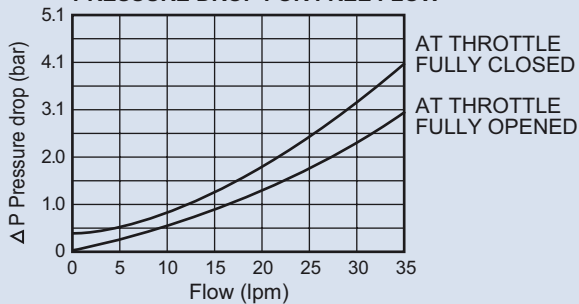
Test fluid viscosity: 35 cst
Test temperature: 50 °C

MSW(A,B)-02

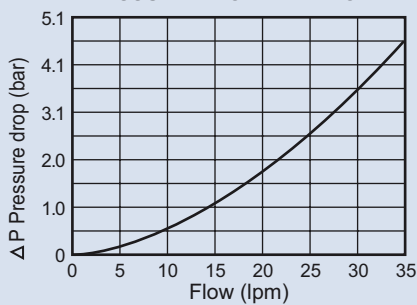
PRESSURE DROP



PRESSURE DROP FOR FREE FLOW

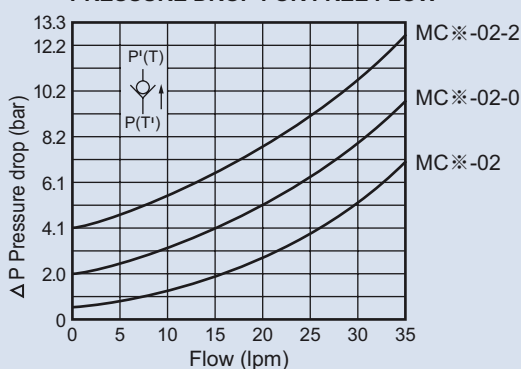


PRESSURE DROP AT THROTTLE FULLY OPENED



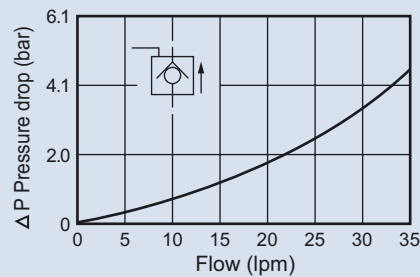
MCP(T,A,B)-02

PRESSURE DROP FOR FREE FLOW

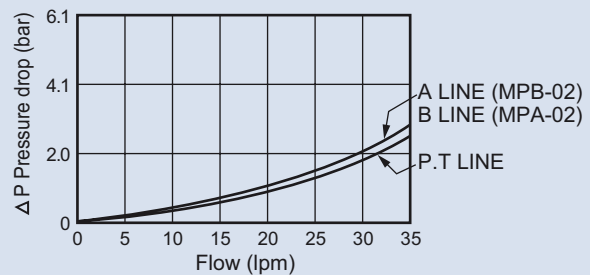


MPW(A,B)-02

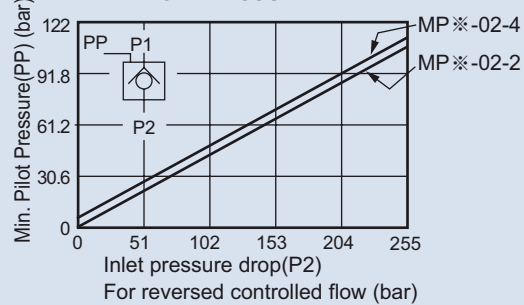
PRESSURE DROP FOR REVERSE CONTROLLED FLOW



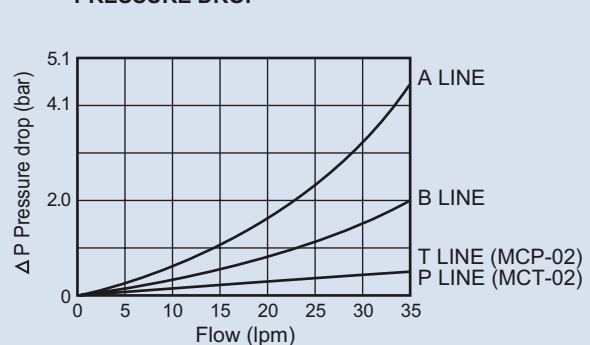
PRESSURE DROP



MIN. PILOT PRESSURE



PRESSURE DROP



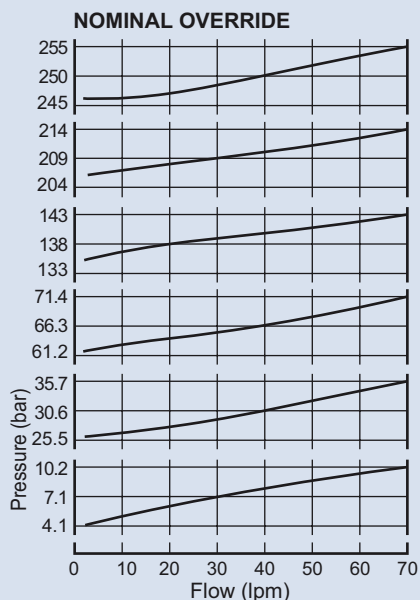
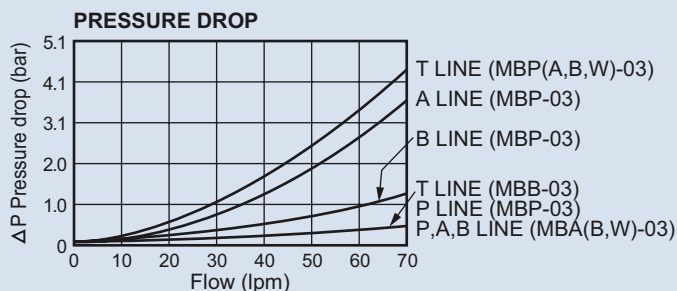
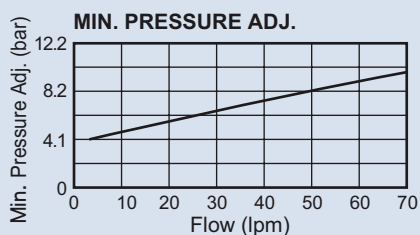
PERFORMANCE CURVES FOR MODULAR VALVES- MBP(A,B)-03, MRP(A,B)-03, MHA(B)-03

Performance curves

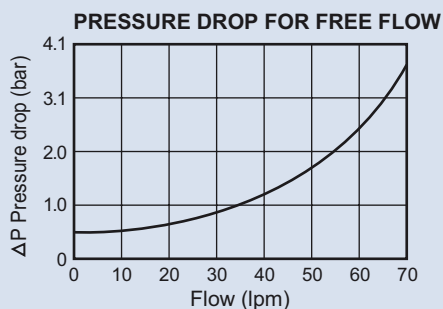
Test fluid viscosity: 35 cst
Test temperature: 50 °C

D

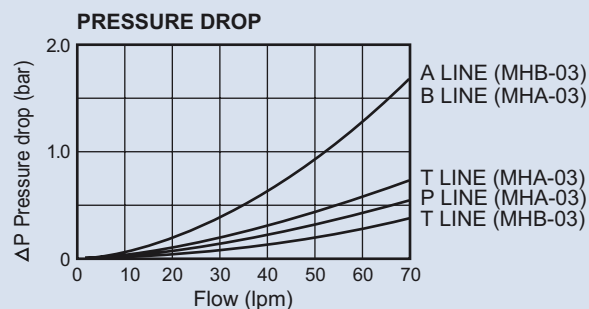
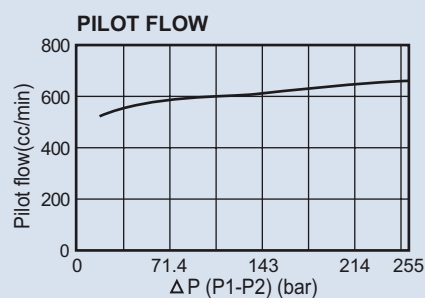
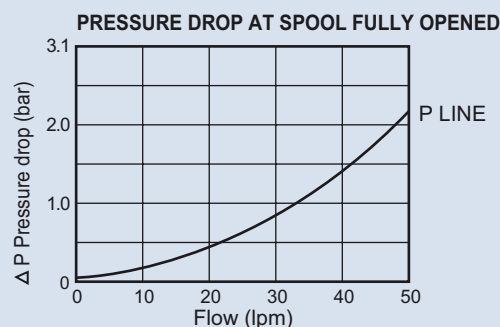
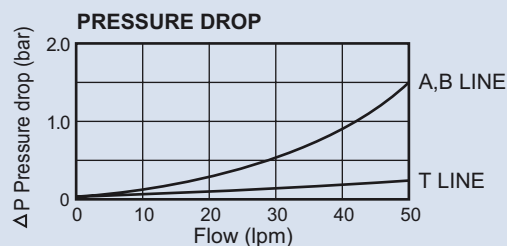
MBP(A,B)-03



MHA(B)-03



MRP(A,B)-03

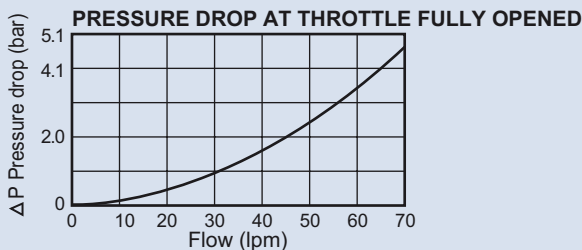
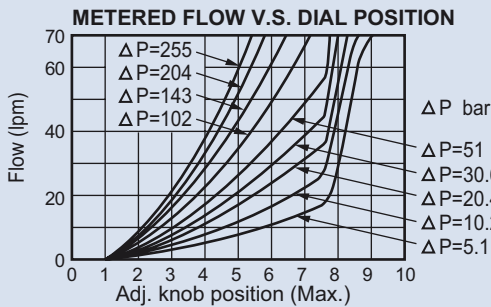
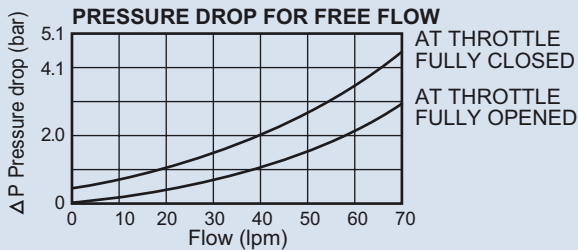
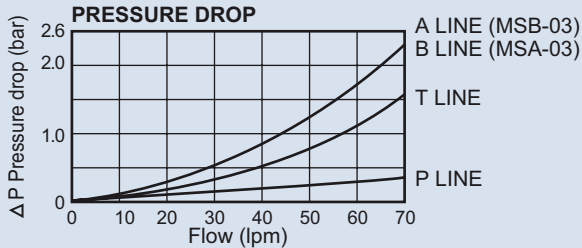


PERFORMANCE CURVES FOR MODULAR VALVES- MSW(A,B)-03, MPW(A,B)-03, MCP(T,A,B)-03

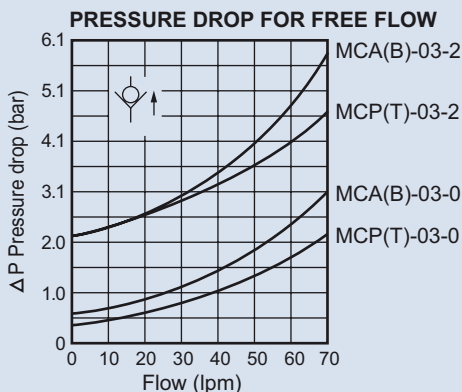
Performance curves

Test fluid viscosity: 35 cst
Test temperature: 50 °C

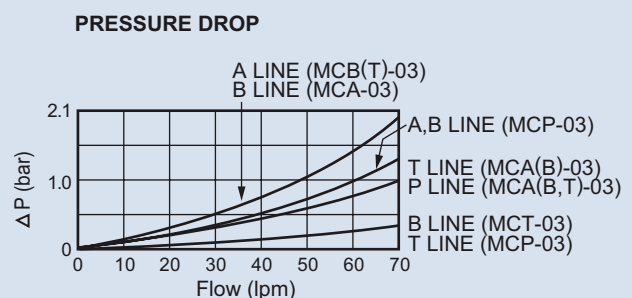
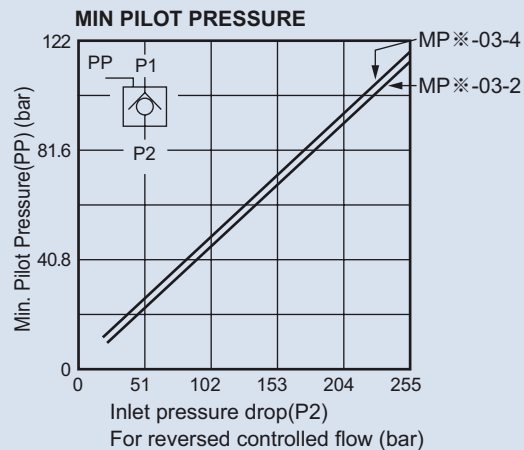
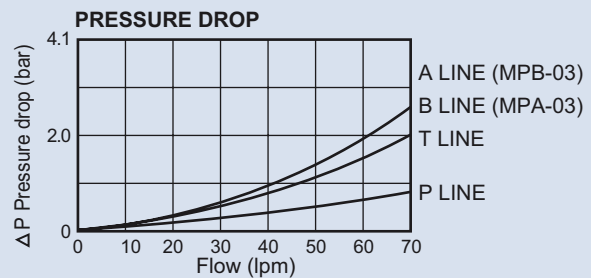
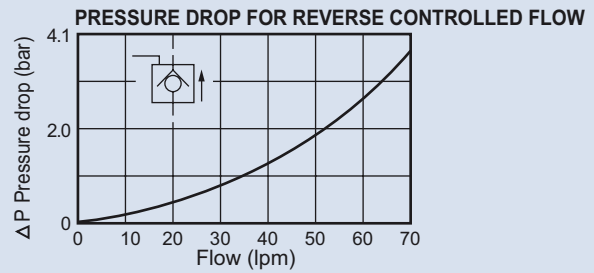
MSW(A,B)-03



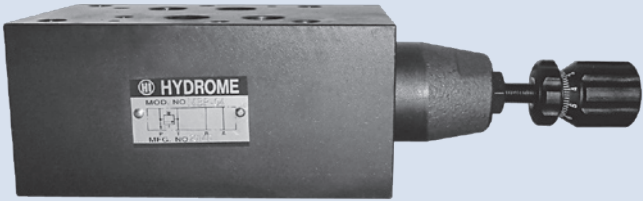
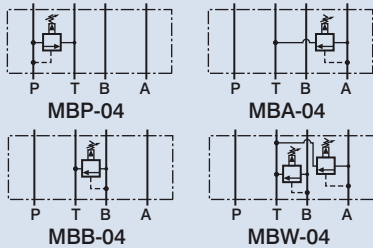
MCP(T,A,B)-03



MPW(A,B)-03



MODULAR RELIEF VALVE



D

How to order

MB P - 04 - ✖ - ✖

1 2 3 4 5

- Model
- Control port P: P port A: A port B: B port W: A and B ports
- Nominal valve size 04: 1/2" (ISO CETOP 7, NFPA D07, DIN NG 16)
- Pressure adjusting range B: 3~100 bar H: 7~315 bar
- Adjustment option None: Tool adjustment K: Hand-bar adjustment

Specifications

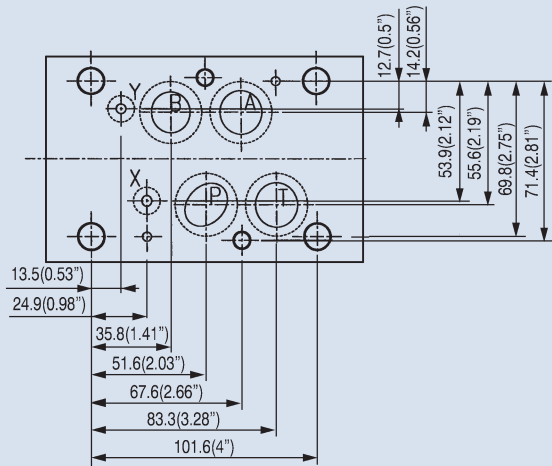
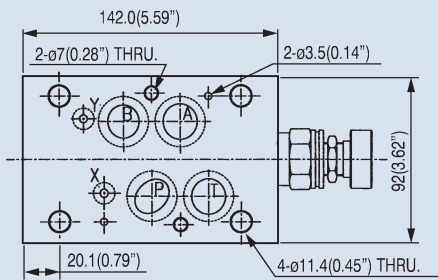
Model	Max. Operating Pressure (bar)	Pressure Adj. Range (bar)	Max. Flow (lpm)	Weight (kg)
MBP-04	315	B: 3~100 H: 7~315	200	6.0
MBA-04				6.0
MBB-04				6.0
MBW-04				7.0

Dimensions

MBP-04

Mounting interface
ISO 4401-AD-07-4-A

Unit: mm
(inch)



MODULAR PRESSURE REDUCING VALVE



How to order

MR P - 04 - ✖ - ✖

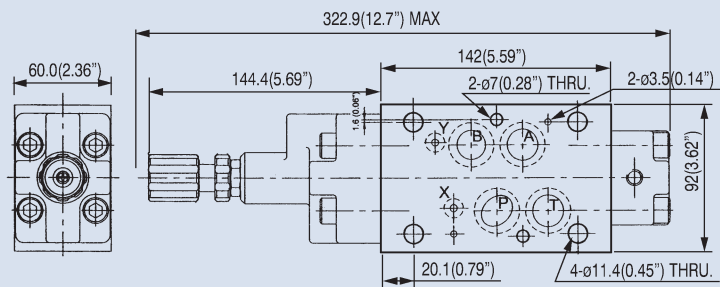
- | | |
|---|---|
| 1 | Model |
| 2 | Control port P: P port A: A port B: B port |
| 3 | Nominal valve size 04: 1/2" (ISO CETOP 7, NFPA D07, DIN NG 16) |
| 4 | Pressure adjusting range B: 8~70 bar C: 8~140 bar H: 10~250 bar |
| 5 | Adjustment option None: Tool adjustment K: Hand-bar adjustment |

Specifications

Model	Max. Operating Pressure (bar)	Pressure Adj. Range (bar)	Max. Flow (lpm)	Weight (kg)
MRP-04	350	B: 8~70	300	7.5
MRA-04		C: 8~140		7.5
MRB-04		H: 10~250		7.5

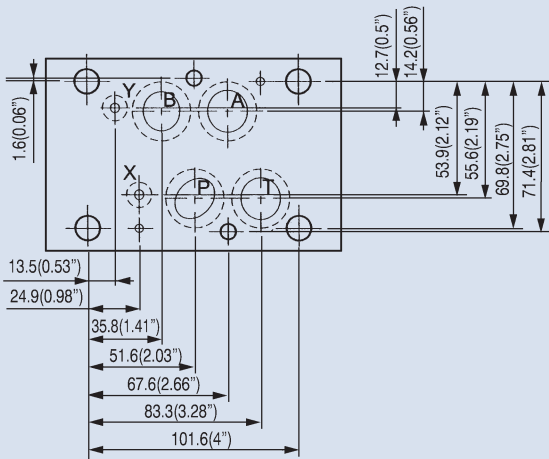
Dimensions

MRP-04

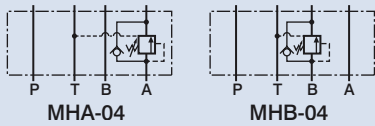


Mounting interface ISO 4401-AD-07-4-A

Unit: mm
(inch)



MODULAR COUNTERBALANCE VALVE



D

How to order

MH A - 04 - ✖ - ✖

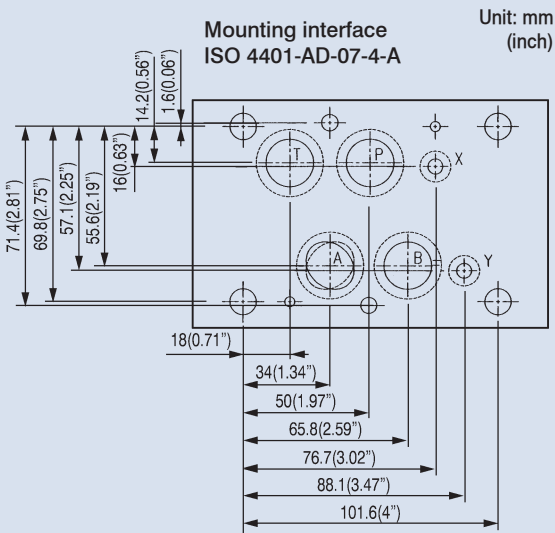
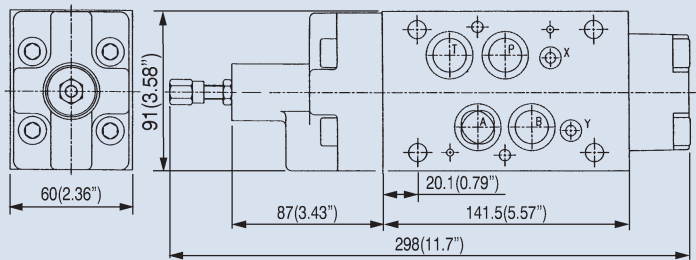
- | | |
|---|--|
| 1 | Model |
| 2 | Control port A: A port B: B port |
| 3 | Nominal valve size 04: 1/2" (ISO CETOP 7, NFPA D07, DIN NG 16) |
| 4 | Pressure adjusting range B: 8~70 bar C: 10~140 bar |
| 5 | Adjustment option None: Tool adjustment K: Hand-bar adjustment |

Specifications

Model	Max. Operating Pressure (bar)	Pressure Adj. Range (bar)	Max. Flow (lpm)	Weight (kg)
MHA-04	315	B: 8~70	300	7.5
MHB-04		C: 10~140		7.5

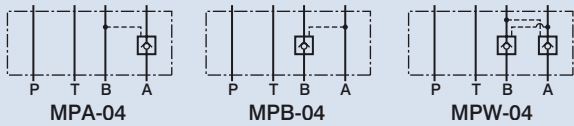
Dimensions

MHA-04



Unit: mm
(inch)

MODULAR PILOT OPERATED CHECK VALVE



How to order

MP W - 04

1	2	3
1	Model	
2	Control port A: A port B: B port W: A and B ports	
3	Nominal valve size 04: 1/2" (ISO CETOP 7, NFPA D07, DIN NG 16)	

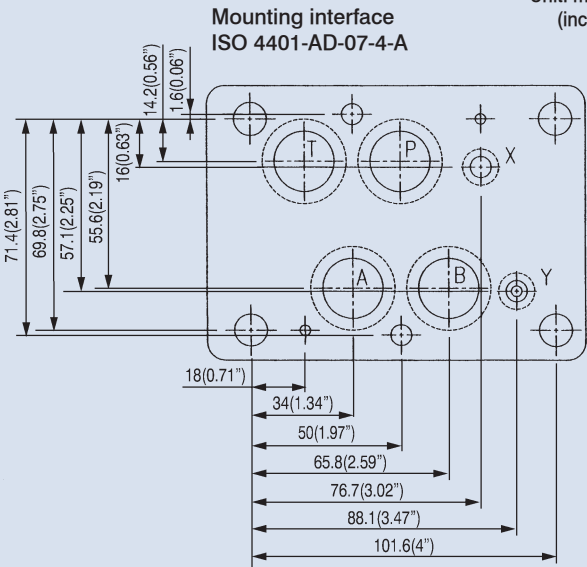
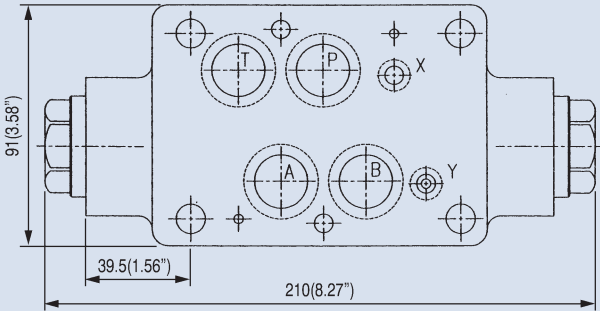
Specifications

Model	Max. Operating Pressure (bar)	Cracking Pressure (bar)	Max. Flow (lpm)	Weight (kg)
MPA-04	315	2	300	5.0
MPB-04				5.0
MPW-04				5.5

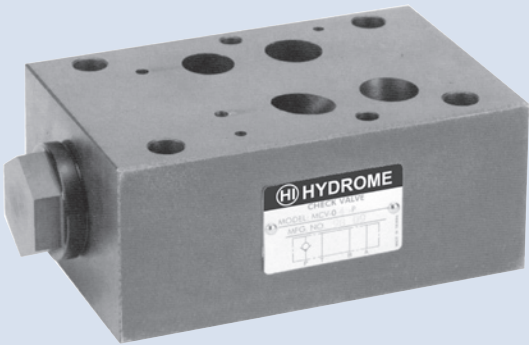
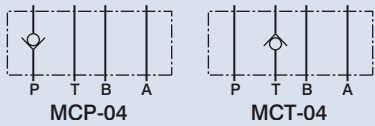
Dimensions

MPW-04

Unit: mm
(inch)



MODULAR CHECK VALVE



D

How to order

MC P - 04 - ✖

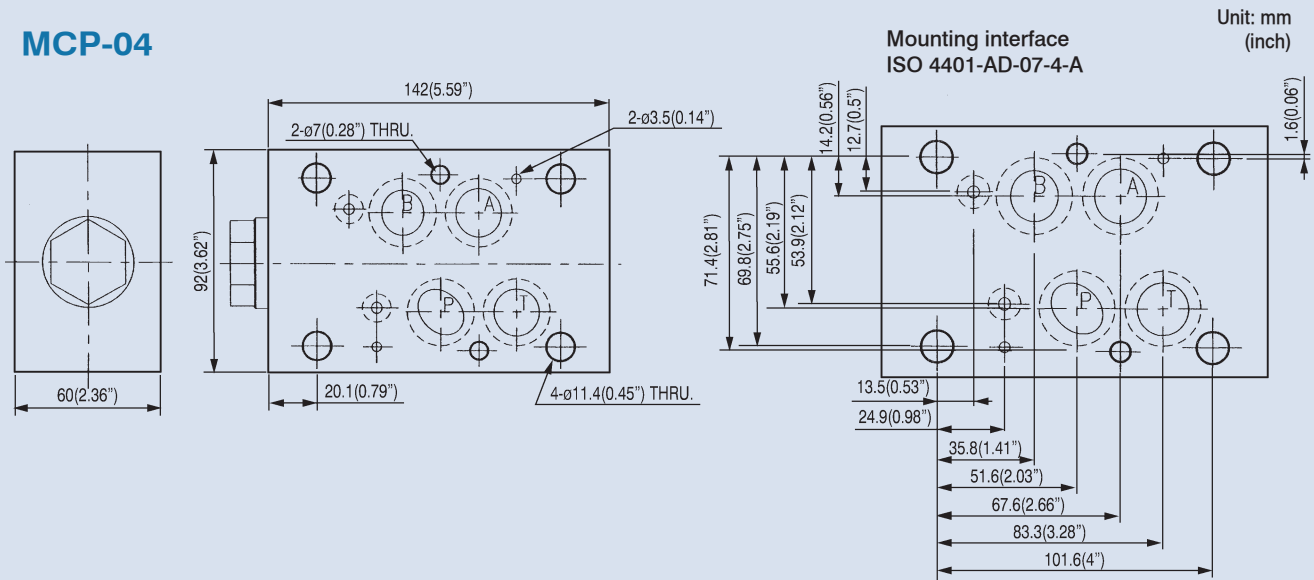
1	2	3	4
1	Model		
2	Control port P: P port T: T port		
3	Nominal valve size 04: 1/2" (ISO CETOP 7, NFPA D07, DIN NG 16)		
4	Cracking pressure 0: 0.5 bar 5: 5 bar		

Specifications

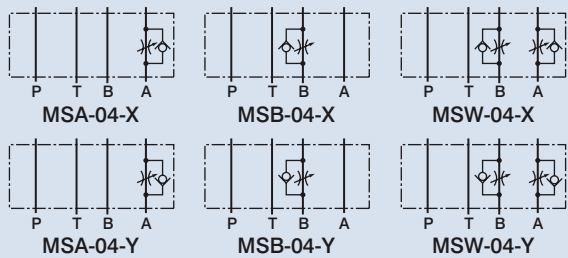
Model	Max. Operating Pressure (bar)	Cracking Pressure (bar)	Max. Flow (lpm)	Weight (kg)
MCP-04	315	0: 0.5	300	4.8
MCT-04		5: 5		4.8

Dimensions

MCP-04



MODULAR THROTTLE AND CHECK VALVE



How to order

MS W - 04 - ✖ - ✖

1 2 3 4 5

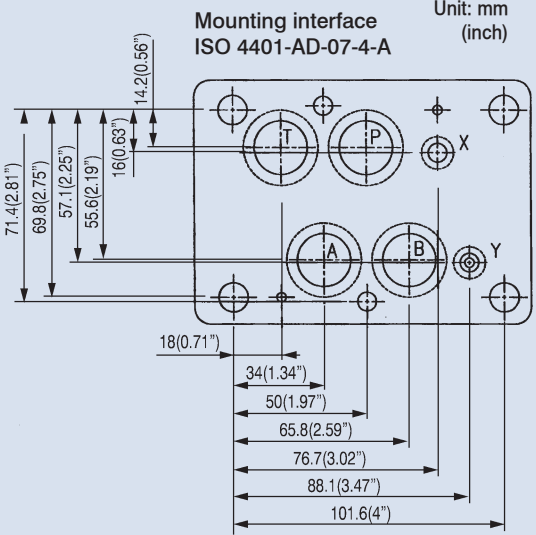
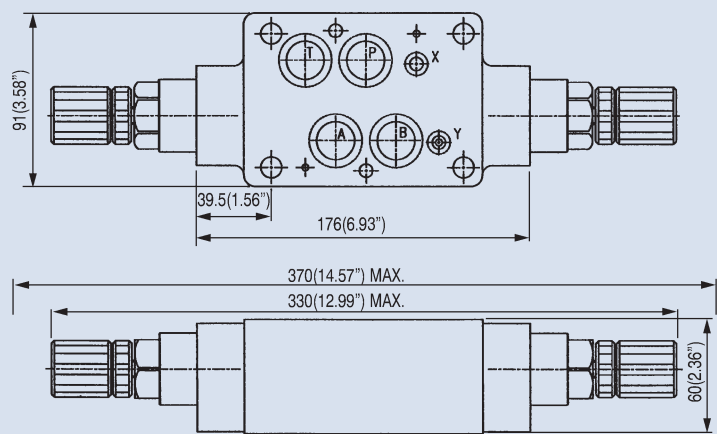
1	Model			
2	Control port	A: A port	B: B port	W: A and B ports
3	Nominal valve size 04: 1/2" (ISO CETOP 7, NFPA D07, DIN NG 16)			
4	Control type	X: Meter-out	Y: Meter-in	
5	Adjustment option None: Tool adjustment K: Hand-bar adjustment			

Specifications

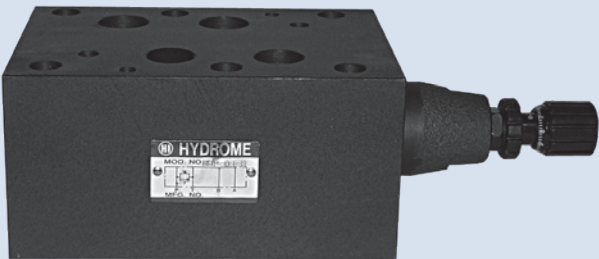
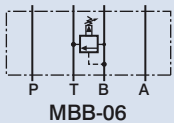
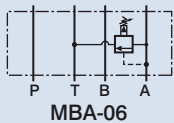
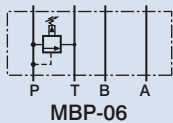
Model	Max. Operating Pressure (bar)	Flow Adj. Range (lpm)	Max. Flow (lpm)	Weight (kg)
MSA-04	315	0.8~300	320	5.0
MSB-04				5.0
MSW-04				5.5

Dimensions

MSW-04



MODULAR RELIEF VALVE



D

How to order

MB P - 06 - ✖ - ✖

1 2 3 4 5

- 1 Model
- 2 Control port P: P port A: A port B: B port
- 3 Nominal valve size 06: 3/4" (ISO CETOP 8, NFPA D08, DIN NG 25)
- 4 Pressure adjusting range B: 7~70 bar H: 10~230 bar
- 5 Adjustment option None: Tool adjustment K: Hand-bar adjustment

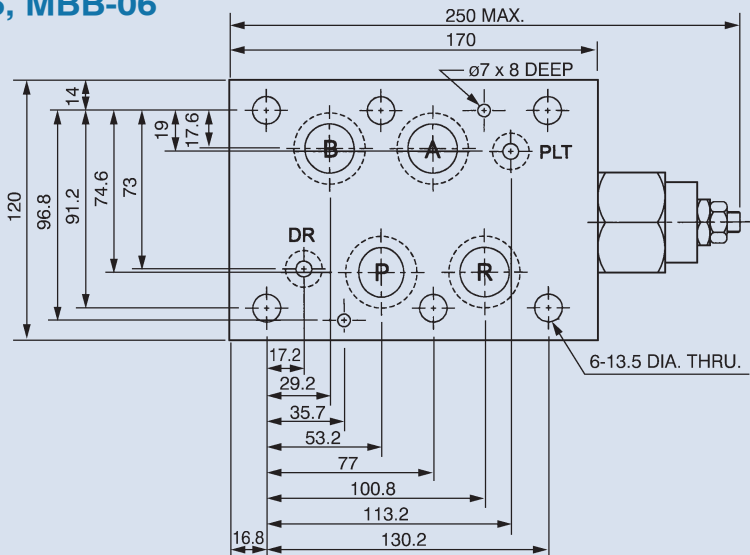
Specifications

Model	Max. Operating Pressure (bar)	Pressure Adj. Range (bar)	Max. Flow (lpm)	Weight (kg)
MBP-06	250	B: 7~70 H: 10~230	250	11.5
MBA-06				11.5
MBB-06				11.5

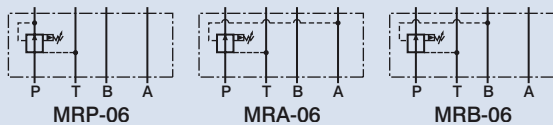
Dimensions

MBP-06, MBA-06, MBB-06

Unit: mm



MODULAR PRESSURE REDUCING VALVE



How to order

MR P - 06 - ✖ - ✖

1 2 3 4 5

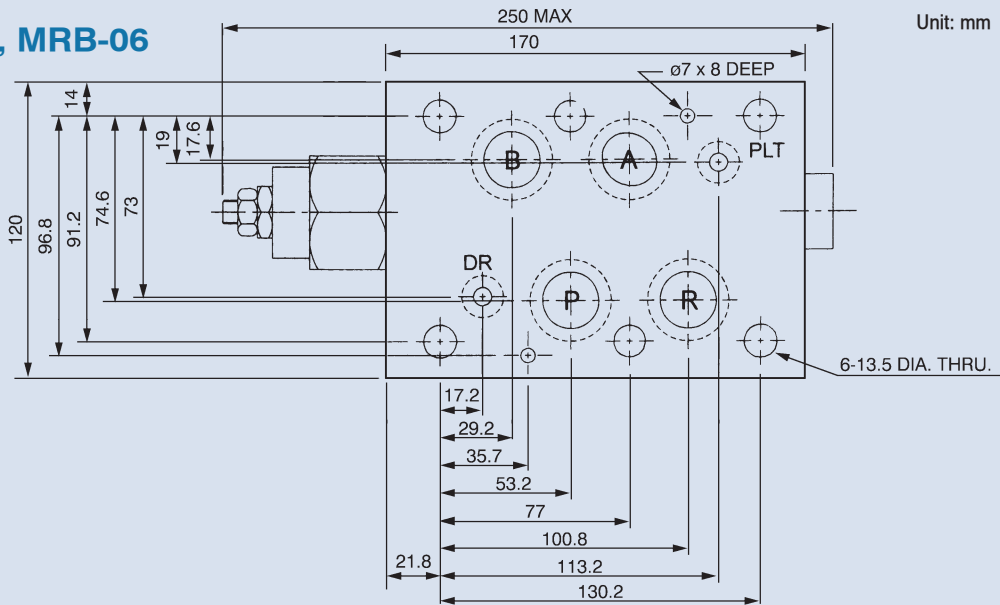
- | | |
|---|--|
| 1 | Model |
| 2 | Control port P: P port A: A port B: B port |
| 3 | Nominal valve size 06: 3/4" (ISO CETOP 8, NFPA D08, DIN NG 25) |
| 4 | Pressure adjusting range B: 7~70 bar H: 10~230 bar |
| 5 | Adjustment option None: Tool adjustment K: Hand-bar adjustment |

Specifications

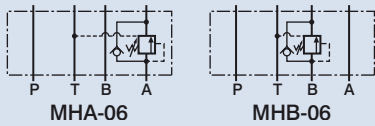
Model	Max. Operating Pressure (bar)	Pressure Adj. Range (bar)	Max. Flow (lpm)	Weight (kg)
MRP-06	250	B: 7~70 H: 10~230	250	11.6
MRA-06				11.6
MRB-06				11.6

Dimensions

MRP-06, MRA-06, MRB-06



MODULAR COUNTERBALANCE VALVE



D

How to order

MH A - 06 - ✖ - ✖

1 2 3 4 5

- | | |
|---|--|
| 1 | Model |
| 2 | Control port A: A port B: B port |
| 3 | Nominal valve size 06: 3/4" (ISO CETOP 8, NFPA D08, DIN NG 25) |
| 4 | Pressure adjusting range B: 7~70 bar H: 10~230 bar |
| 5 | Adjustment option None: Tool adjustment K: Hand-bar adjustment |

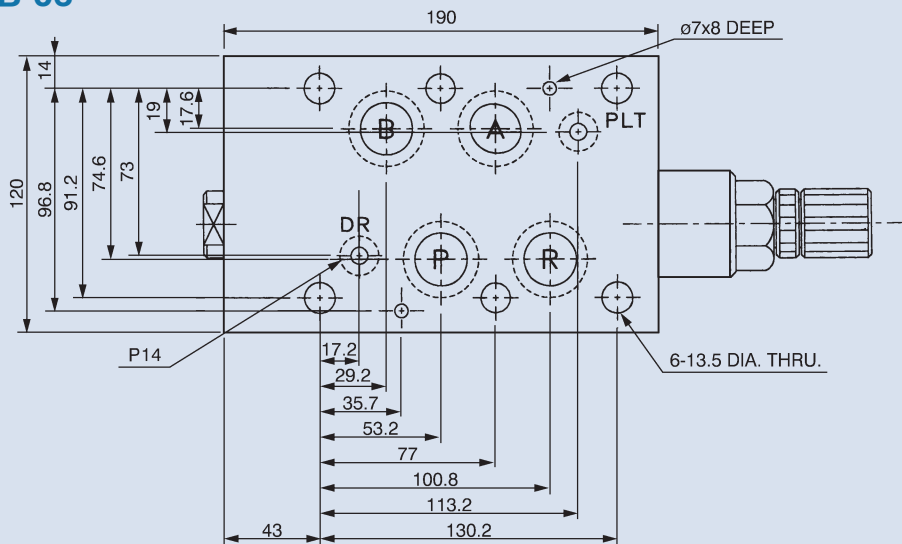
Specifications

Model	Max. Operating Pressure (bar)	Pressure Adj. Range (bar)	Max. Flow (lpm)	Weight (kg)
MHA-06	250	B: 7~70	250	12.5
MHB-06		H: 10~230		12.5

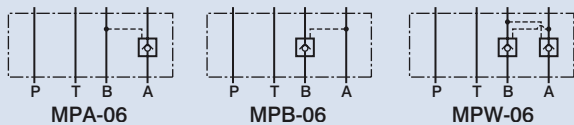
Dimensions

MHA-06, MHB-06

Unit: mm



MODULAR PILOT OPERATED CHECK VALVE



How to order

MP W - 06

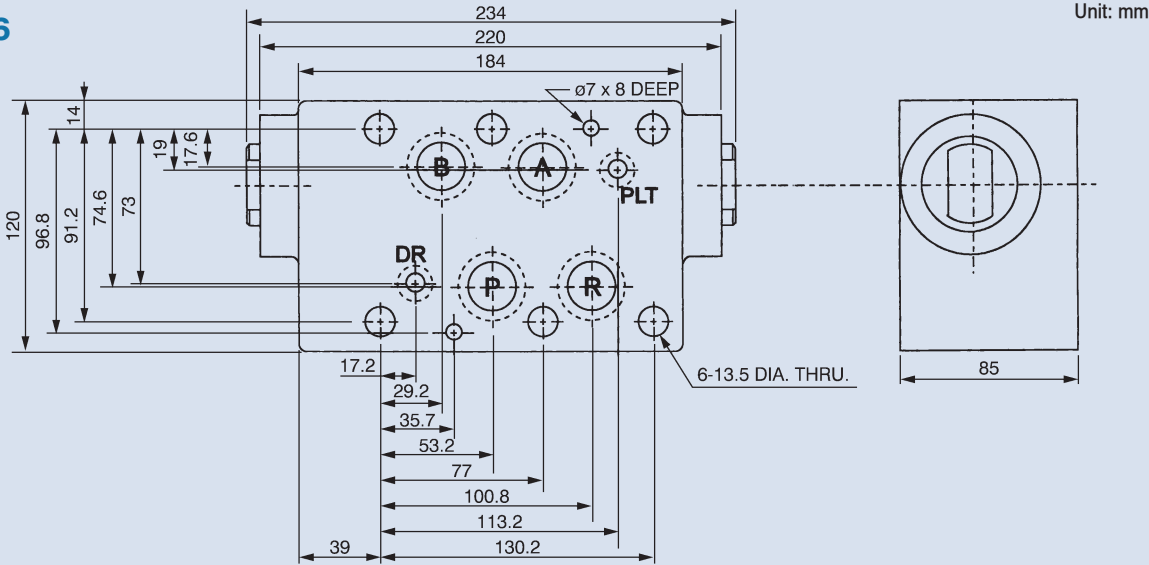
- | 1 | 2 | 3 |
|---|---|---|
| 1 | Model | |
| 2 | Control port A: A port B: B port W: A and B ports | |
| 3 | Nominal valve size 06: 3/4" (ISO CETOP 8, NFPA D08, DIN NG 25) | |

Specifications

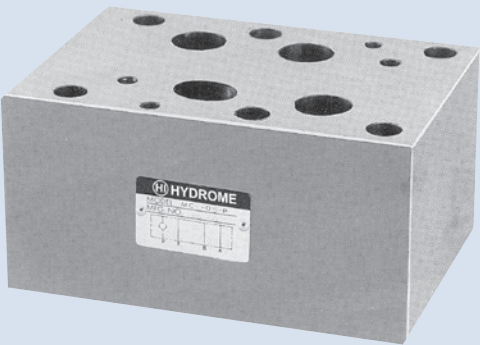
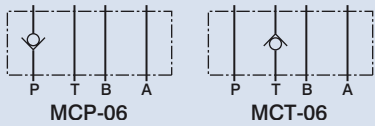
Model	Max. Operating Pressure (bar)	Cracking Pressure (bar)	Max. Flow (lpm)	Weight (kg)
MPA-06	250	2	250	12.6
MPB-06				12.6
MPW-06				13

Dimensions

MPW-06



MODULAR CHECK VALVE



D

How to order

MC P - 06 - ✖

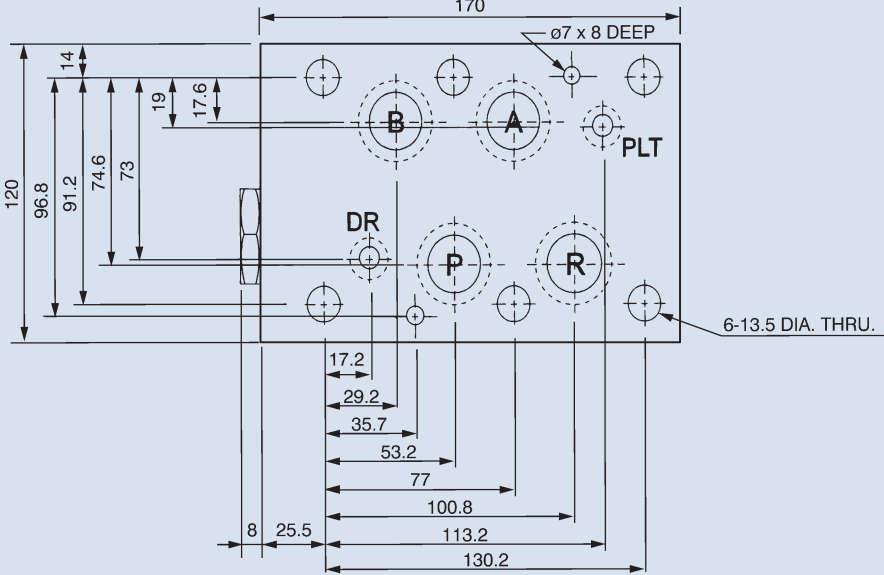
1	2	3	4
1	Model		
2	Control port P: P port T: T port		
3	Nominal valve size 06: 3/4" (ISO CETOP 8, NFPA D08, DIN NG 25)		
4	Cracking pressure 0: 0.5 bar 5: 5 bar		

Specifications

Model	Max. Operating Pressure (bar)	Cracking Pressure (bar)	Max. Flow (lpm)	Weight (kg)
MCP-06	250	0: 0.5	250	10.5
MCT-06		5: 5		10.5

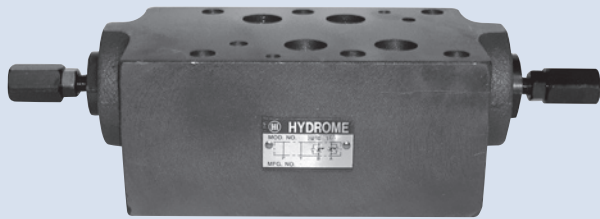
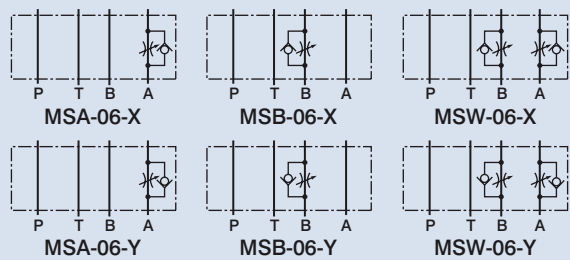
Dimensions

MCP-06



Unit: mm

MODULAR THROTTLE AND CHECK VALVE



How to order

MS W - 06 - ✖ - ✖

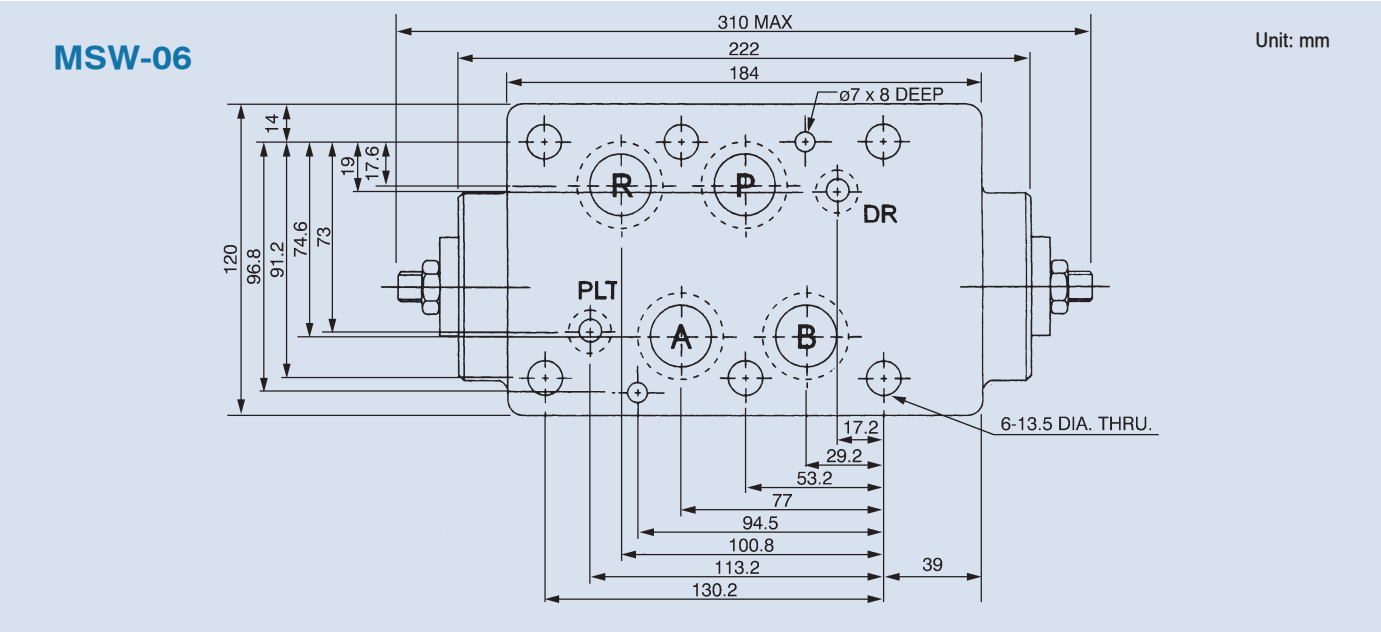
1 2 3 4 5

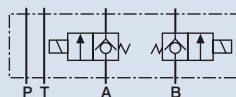
1	Model
2	Control port A: A port B: B port W: A and B ports
3	Nominal valve size 06: 3/4" (ISO CETOP 8, NFPA D08, DIN NG 25)
4	Control type X: Meter-out Y: Meter-in
5	Adjustment option None: Tool adjustment

Specifications

Model	Max. Operating Pressure (bar)	Flow Adj. Range (lpm)	Max. Flow (lpm)	Weight (kg)
MSA-06	250	0.8~200	250	12.2
MSB-06				12.2
MSW-06				12.6

Dimensions





1

2

3

4

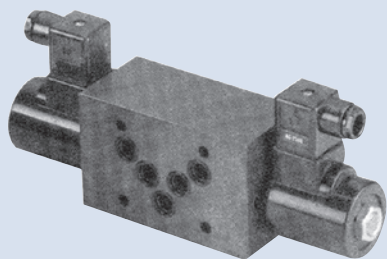
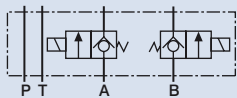
5

1	Model			
2	Control port	A: A port	B: B port	W: A and B ports
3	Nominal valve size	02: 1/4" (ISO CETOP 3, NFPA D03, DIN NG 6)		
4	NC: Normal closed	NO: Normal open		
5	A11: AC110V (50/60HZ)	A22: AC220V (50/60HZ)	D1: DC12V	D2: DC24V

Model	Max. Operating Pressure (bar)	Rated Flow (lpm)	Weight (kg)
SMCA-02	250	20	1.08
SMCB-02			1.08
SMCW-02			1.15

[illegible]

MODULAR SOLENOID CHECK VALVE



How to order

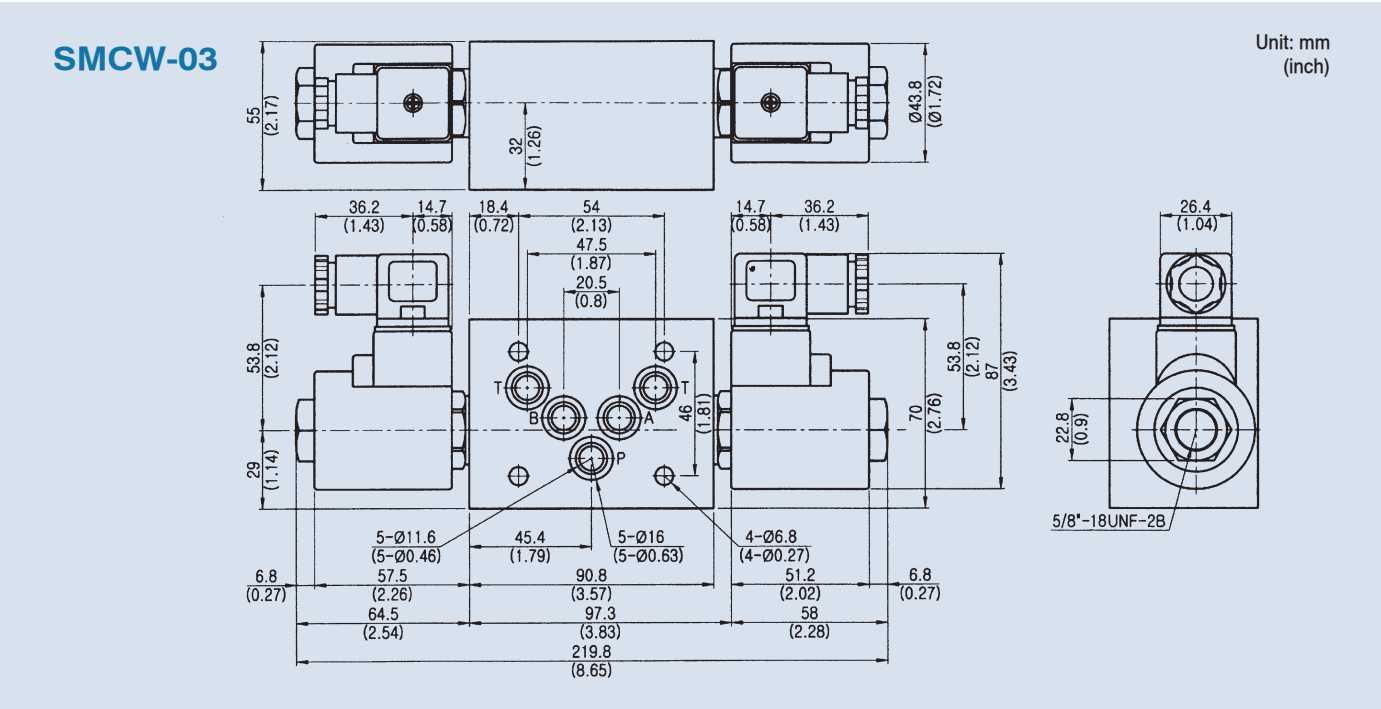
SMC W - 03 - NC - A11

1	2	3	4	5
1	Model			
2	Control port A: A port B: B port W: A and B ports			
3	Nominal valve size 03: 3/8" (ISO CETOP 5, NFPA D05, DIN NG 10)			
4	NC: Normal closed NO: Normal open			
5	A11: AC110V (50/60HZ) A22: AC220V (50/60HZ) D1: 12V D2: 24V			

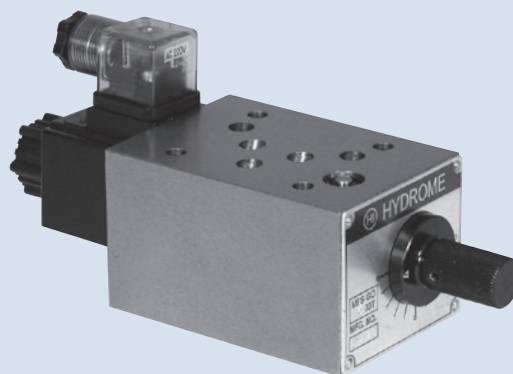
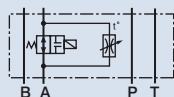
Specifications

Model	Max. Operating Pressure (bar)	Rated Flow (lpm)	Weight (kg)
SMCA-03	250	40	2.8
SMCB-03			2.8
SMCW-03			3.0

Dimensions



MODULAR SOLENOID FLOW CONTROL VALVE



D

How to order

MFS - GO - 02 - 02 - T - A1

1 2 3 4 5

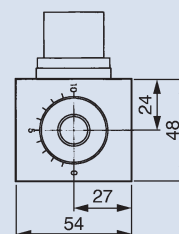
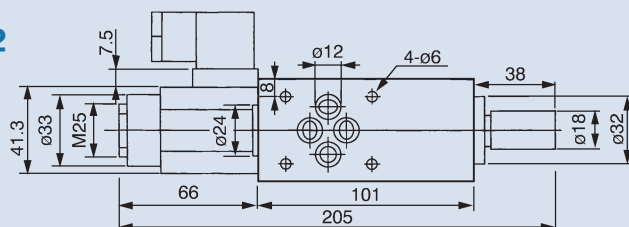
1	Model
2	Flow adjusting range
3	Nominal valve size 02: 1/4" (ISO CETOP 3, NFPA D03, DIN NG 6) 03: 3/8" (ISO CETOP 5, NFPA D05, DIN NG 10)
4	Control port P: P port T: T port A: A port
5	A1: AC110V (60HZ) A2: AC220V (60HZ) A3: AC110V (50HZ) A4: AC220V (50HZ) D1: DC12V D2: DC24V

Specifications

Model	Flow Rate Adj. (l/min)	Free Flow (l/min)	Max. Pressure (bar)	Weight (kg)
MFS-GO-02-02	0.1~2	20	140	2.42
MFS-GO-04-02	0.1~4			
MFS-GO-06-02	0.1~6			
MFS-GO-02-03	0.1~2	30~60		3.3
MFS-GO-04-03	0.1~4			
MFS-GO-08-03	0.1~8			
MFS-GO-12-03	0.1~12			

Dimensions

MFS-GO-02



Unit: mm

MFS-GO-03

