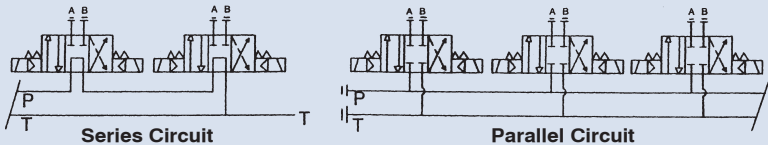
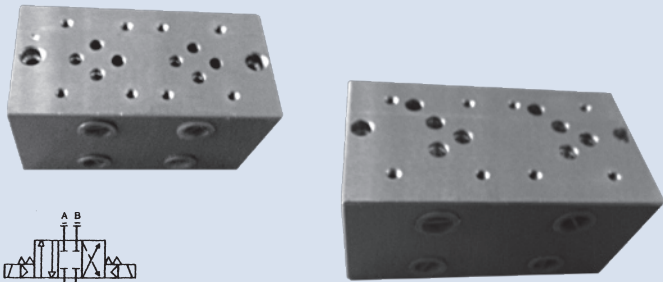


BASE PLATE FOR MODULAR VALVE



How to order

MMC - 02 - 3W - 1 - 03 - P

| | 1 | 2 | 3 | 4 | 5 | 6 |
|---|--|---|---|---|---|---|
| 1 | Model | | | | | |
| 2 | Norminal valve size 02: Size 1/4" (ISO CETOP 3, NFPA D03, DIN NG 6) 03: Size 3/8" (ISO CETOP 5, NFPA D05, DIN NG 10) 04: Size 1/2" (ISO CETOP 7, NFPA D07, DIN NG 16) 06: Size 3/4" (ISO CETOP 8, NFPA D08, DIN NG 25) | | | | | |
| 3 | Quantity of valve station | | | | | |
| 4 | Code of port thread 1: PT 2: NPT | | | | | |
| 5 | Port size For MMC-02 02: 1/4" 03: 3/8" (normal) For MMC-03 03: 3/8" 04: 1/2" (normal) For MMC-04 04: 1/2" 06: 3/4" For MMC-06 06: 3/4" 08: 1" | | | | | |
| 6 | Hydraulic circuit P: Parallel circuit (normal) S: Series circuit | | | | | |

Specifications

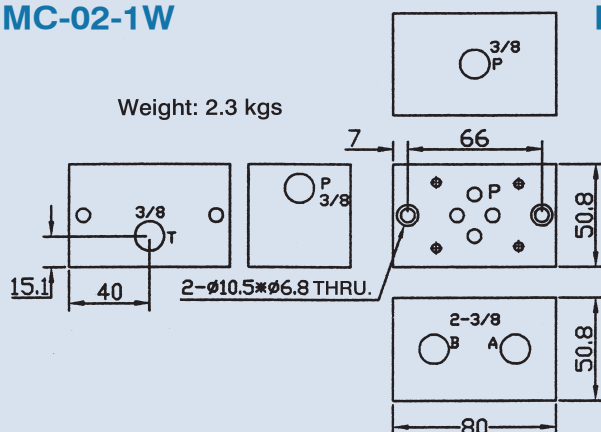
| Model | Quantity Of Valve Station | Code Of Port Thread | Port Size | Tie Bolt | Dimensions | | | Weight (kg) |
|-----------|---------------------------|---------------------|-----------|-----------|------------|-----|-----|-------------|
| | | | | | L1 | L2 | L3 | |
| MMC-02-2W | 2 | 1 | PT 3/8" | M5 x 0.8P | 130 | 110 | 65 | 4.1 |
| | | 2 | NPT 3/8" | #10-24UNC | | | | |
| MMC-02-3W | 3 | 1 | PT 3/8" | M5 x 0.8P | 180 | 160 | 65 | 5.9 |
| | | 2 | NPT 3/8" | #10-24UNC | | | | |
| MMC-02-4W | 4 | 1 | PT 3/8" | M5 x 0.8P | 230 | 210 | 115 | 7.7 |
| | | 2 | NPT 3/8" | #10-24UNC | | | | |
| MMC-02-5W | 5 | 1 | PT 3/8" | M5 x 0.8P | 280 | 260 | 115 | 9.5 |
| | | 2 | NPT 3/8" | #10-24UNC | | | | |
| MMC-02-6W | 6 | 1 | PT 3/8" | M5 x 0.8P | 330 | 310 | 165 | 11.3 |
| | | 2 | NPT 3/8" | #10-24UNC | | | | |
| MMC-03-2W | 2 | 1 | PT 1/2" | M6 x 1P | 170 | 156 | 85 | 7.3 |
| | | 2 | NPT 1/2" | 1/4-20UNC | | | | |
| MMC-03-3W | 3 | 1 | PT 1/2" | M6 x 1P | 245 | 231 | 85 | 11 |
| | | 2 | NPT 1/2" | 1/4-20UNC | | | | |
| MMC-03-4W | 4 | 1 | PT 1/2" | M6 x 1P | 320 | 306 | 160 | 14.7 |
| | | 2 | NPT 1/2" | 1/4-20UNC | | | | |
| MMC-03-5W | 5 | 1 | PT 1/2" | M6 x 1P | 395 | 381 | 160 | 18.4 |
| | | 2 | NPT 1/2" | 1/4-20UNC | | | | |
| MMC-03-6W | 6 | 1 | PT 1/2" | M6 x 1P | 470 | 456 | 235 | 22.1 |
| | | 2 | NPT 1/2" | 1/4-20UNC | | | | |

BASE PLATE FOR MODULAR VALVE

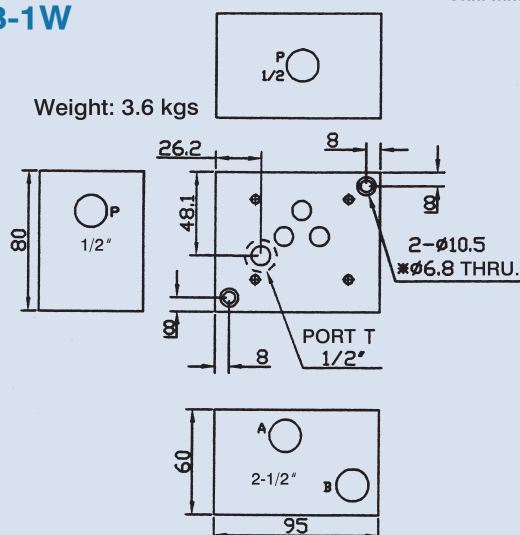
Dimensions

Unit: mm

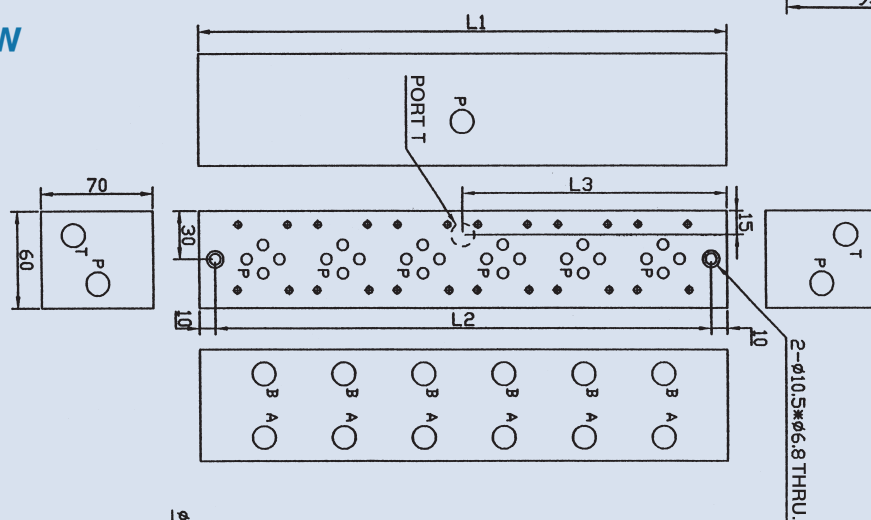
MMC-02-1W



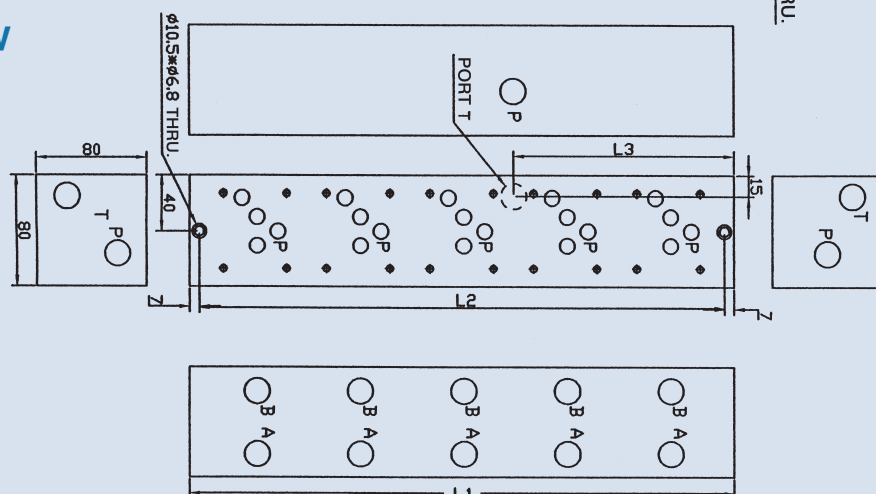
MMC-03-1W



MMC-02-6W



MMC-03-5W



MANIFOLD FOR CARTRIDGE VALVE

Specifications

| Ordering Code | Ports | Weight kg (lbs) |
|---------------|-------|--------------------|
| CS08-2N-3G-A | G 1/4 | 0.2 |
| CS08-2N-3G-B | G 3/8 | (0.44) |
| CS10-2N-3G-A | G 1/2 | 0.37 |
| CS10-2N-3G-B | G 3/8 | (0.82) |
| CS12-2N-3G-A | G 1/2 | 0.66 |
| CS12-2N-3G-B | G 3/4 | (1.46) |

Cavity CS08-2N / CS10-2N / CS12-2N

Piping Threads

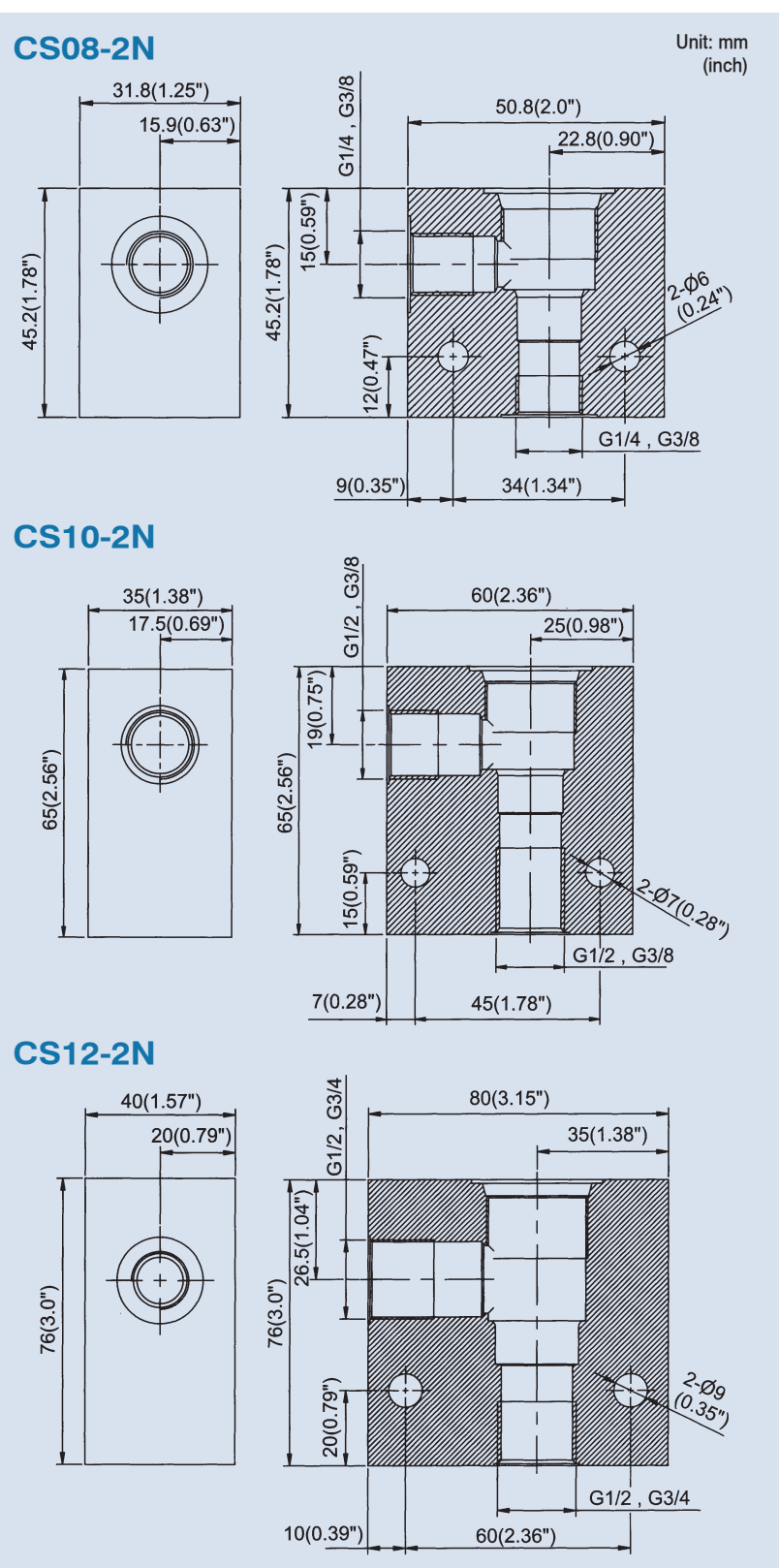
1P: PT 2N: NPT 3G: PF (G) 4A: SAE 5B: BSP

Max. Pressure 3600 psi (250 bar)

Features

Note: The maximum allowable pressure for the standard aluminum-alloy bodies is 250 bar; we also supply the ductile iron and steel bodies for higher pressure need.

Dimensions

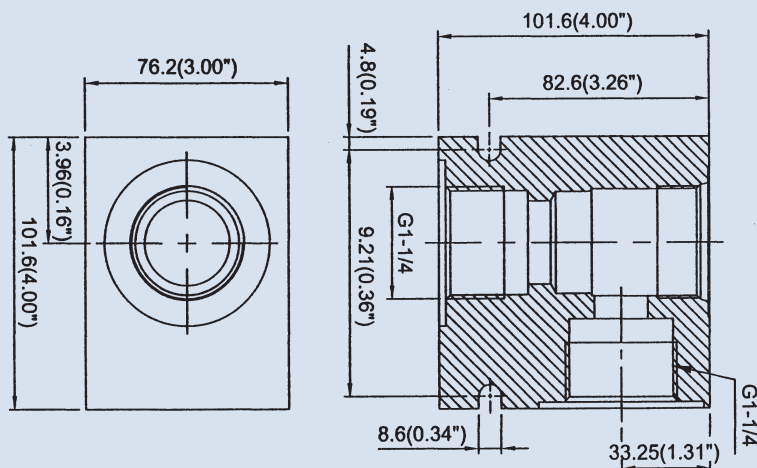


Dimensions

1P: PT 2N: NPT 3G: PF (G) 4A: SAE 5B: BSP

Note: The maximum allowable pressure for the standard aluminum-alloy bodies is 250 bar; we also supply the ductile iron and steel bodies for higher pressure need.

Unit: mm
(inch)



MANIFOLD FOR CARTRIDGE VALVE

Specifications

| Ordering Code | Ports | Weight kg (lbs) |
|---------------|-------|--------------------|
| CS08-3N-3G-A | G 3/8 | 0.35 (0.77) |
| CS10-3N-3G-A | G 3/8 | 0.40 (0.88) |
| CS12-3N-3G-A | G 1/2 | 0.81 (1.79) |

Cavity CS08-3N / CS10-3N / CS12-3N

Piping Threads

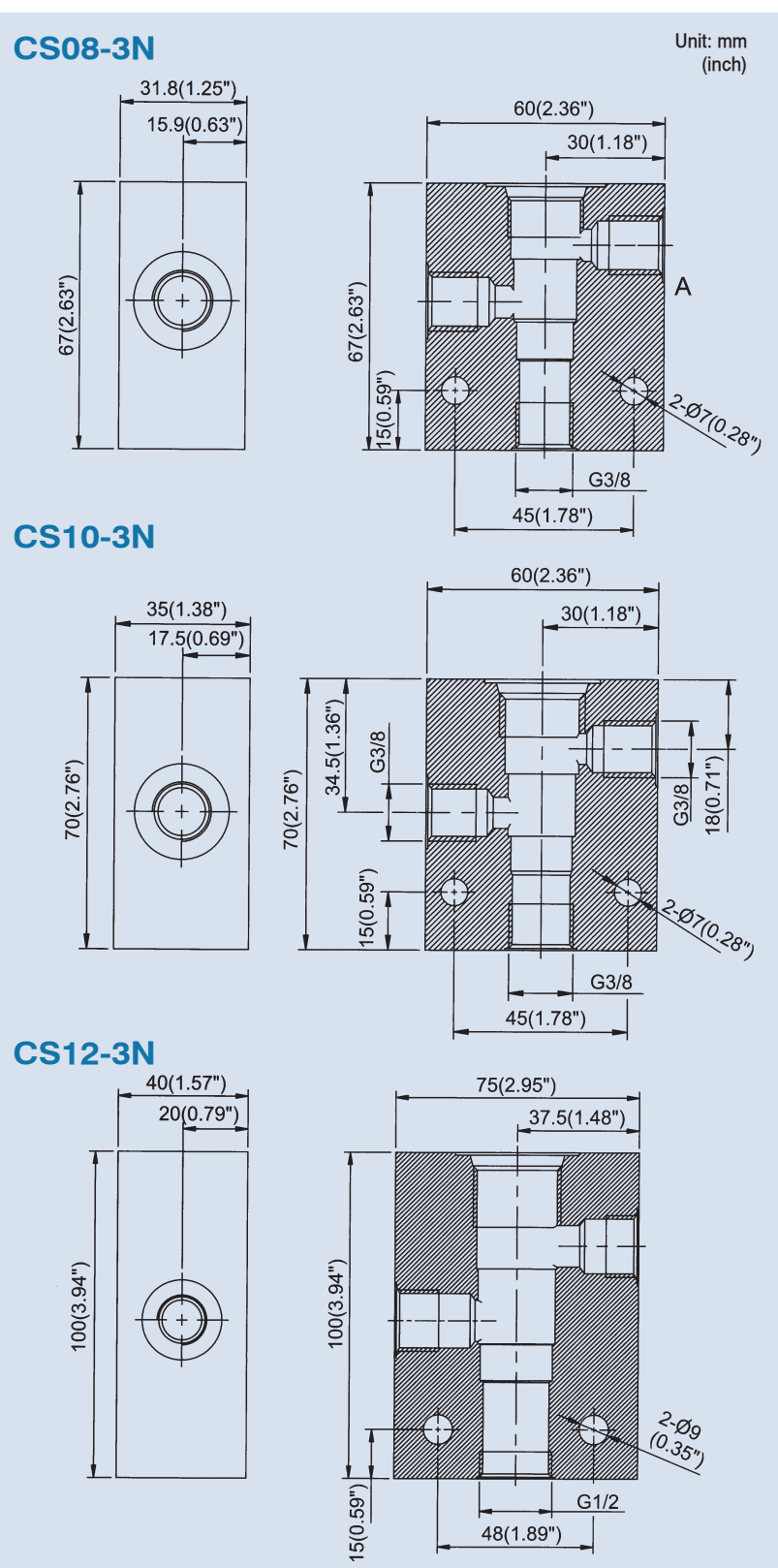
1P: PT 2N: NPT 3G: PF (G) 4A: SAE 5B: BSP

Max. Pressure 3600 psi (250 bar)

Features

Note: The maximum allowable pressure for the standard aluminum-alloy bodies is 250 bar; we also supply the ductile iron and steel bodies for higher pressure need.

Dimensions



MANIFOLD FOR CARTRIDGE VALVE

Specifications

| Ordering Code | Ports | Weight kg (lbs) |
|---------------|-------|--------------------|
| CS08-3S-3G-A | G 3/8 | 0.31 (0.68) |
| CS10-3S-3G-A | G 1/2 | 0.40 (0.88) |
| CS12-3S-3G-A | G 3/4 | 0.81 (1.79) |

Cavity CS08-3S / CS10-3S / CS12-3S

Piping Threads

1P: PT 2N: NPT 3G: PF (G) 4A: SAE 5B: BSP

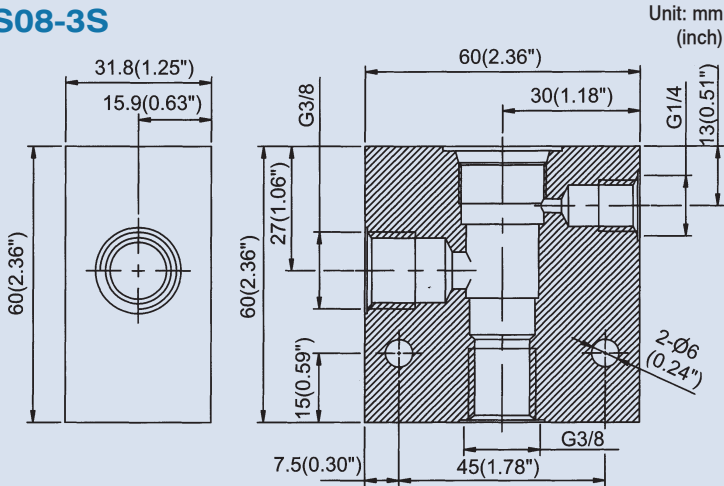
Max. Pressure 3600 psi (250 bar)

Features

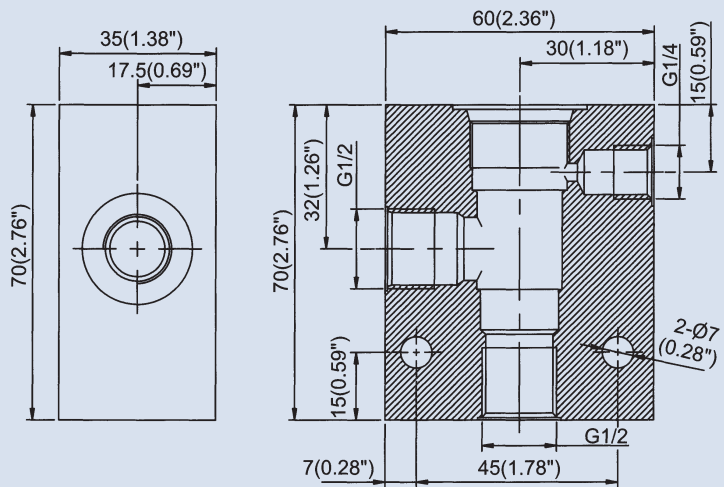
Note: The maximum allowable pressure for the standard aluminum-alloy bodies is 250 bar; we also supply the ductile iron and steel bodies for higher pressure need.

Dimensions

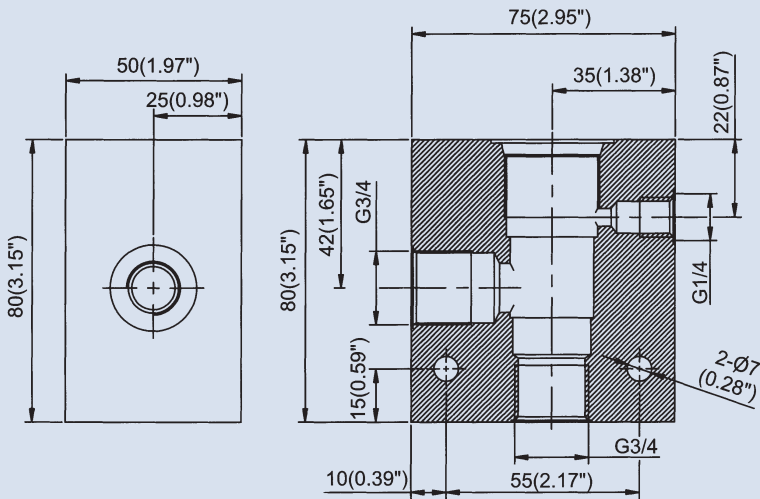
CS08-3S



CS10-3S



CS12-3S



MANIFOLD FOR CARTRIDGE VALVE

Specifications

| Ordering Code | Ports | Weight kg (lbs) |
|---------------|-------|--------------------|
| CS08-4N-3G-A | G 3/8 | 0.42 (0.93) |
| CS10-4N-3G-A | G 1/2 | 0.48 (1.06) |
| CS10-4N-3G-B | G 3/8 | |
| CS12-4N-3G-A | G 3/4 | 1.78 (3.92) |

Cavity CS08-4N / CS10-4N / CS12-4N

Piping Threads

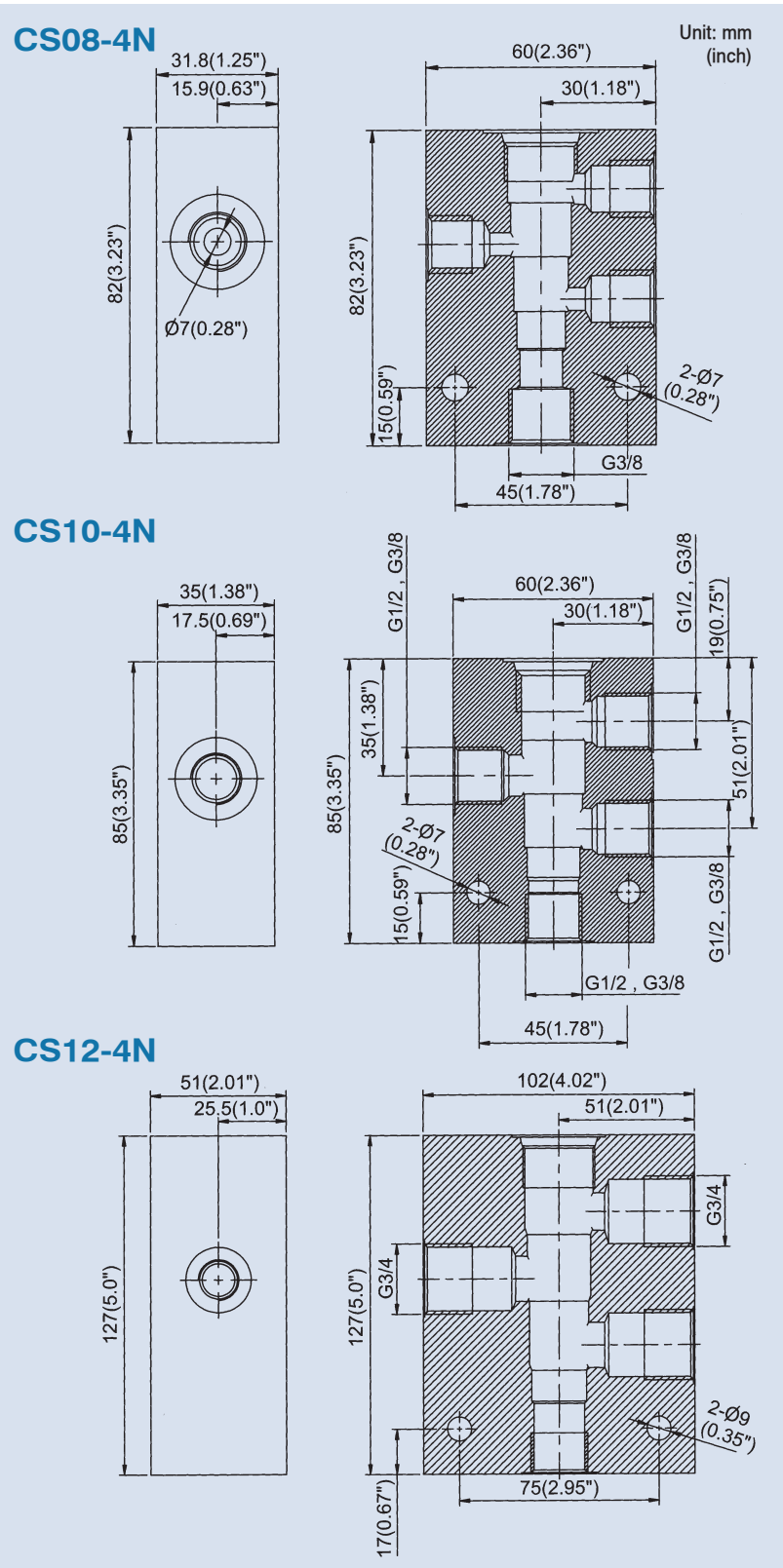
1P: PT 2N: NPT 3G: PF (G) 4A: SAE 5B: BSP

Max. Pressure 3600 psi (250 bar)

Features

Note: The maximum allowable pressure for the standard aluminum-alloy bodies is 250 bar; we also supply the ductile iron and steel bodies for higher pressure need.

Dimensions



MANIFOLD FOR CARTRIDGE VALVE

Specifications

| Ordering Code | Ports | Weight kg (lbs) |
|---------------|-------|--------------------|
| CST-2A-3G-A | G 3/8 | 0.65 |
| CST-2A-3G-B | G 1/2 | (1.43) |
| CST-3A-3G-A | G 3/8 | 0.40 |
| CST-3A-3G-B | G 1/2 | (0.88) |
| CST-3A-3G-C | G 3/4 | |
| CST-5A-3G-A | G 3/8 | 0.35 |
| CST-5A-3G-B | G 1/2 | (0.77) |

Cavity CST-2A / CST-3A / CST-5A

Piping Threads

1P: PT 2N: NPT 3G: PF (G) 4A: SAE 5B: BSP

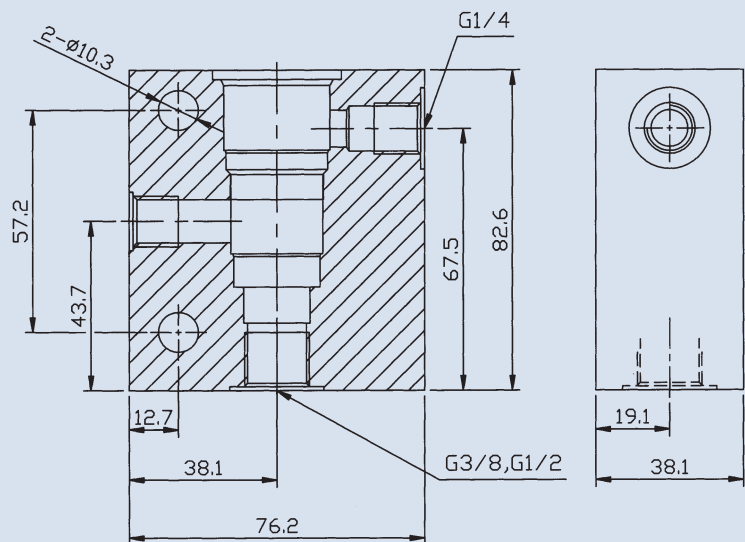
Max. Pressure 3600 psi (250 bar)

Features

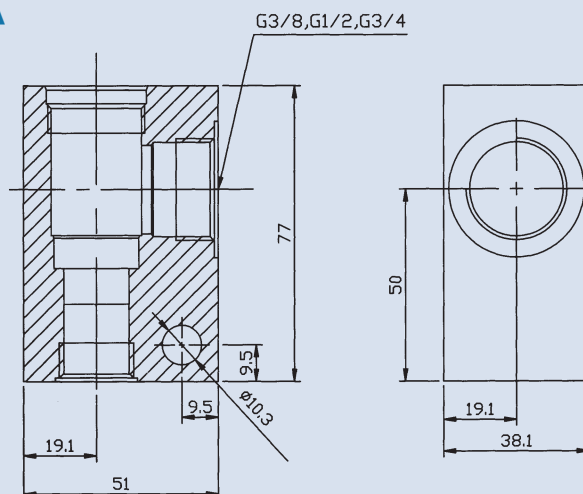
Note: The maximum allowable pressure for the standard aluminum-alloy bodies is 250 bar; we also supply the ductile iron and steel bodies for higher pressure need.

Dimensions

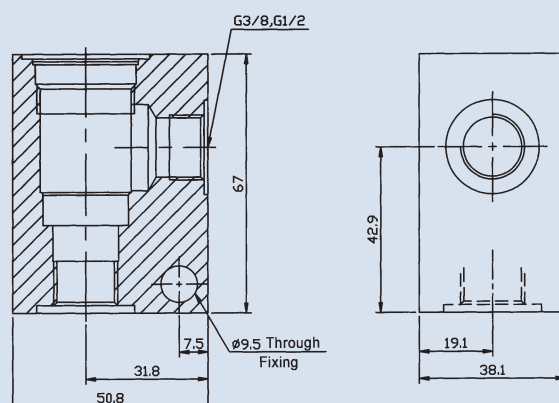
CST-2A



CST-3A



CST-5A



MANIFOLD FOR CARTRIDGE VALVE

Specifications

| Ordering Code | Ports | Weight kg (lbs) |
|---------------|-------|--------------------|
| CST-10A-3G-A | G 3/8 | 0.27 |
| CST-10A-3G-B | G 1/2 | (0.60) |
| CST-11A-3G-A | G 1/4 | 0.50 |
| CST-11A-3G-B | G 3/8 | (1.10) |
| CST-13A-3G-A | G 1/4 | 0.23 |
| CST-13A-3G-B | G 3/8 | (0.51) |

Cavity CST-10A / CST-11A / CST-13A

Piping Threads

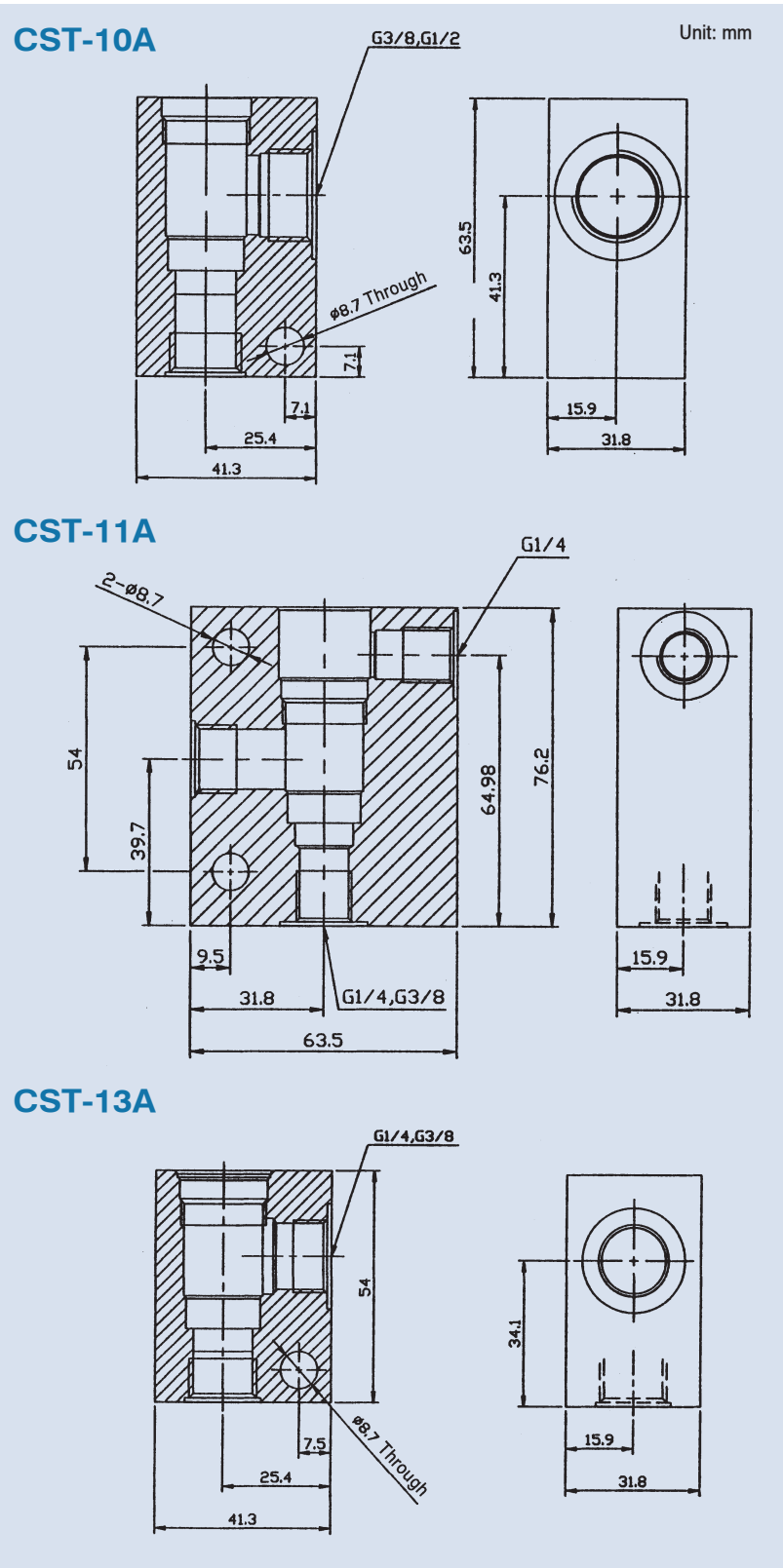
1P: PT 2N: NPT 3G: PF (G) 4A: SAE 5B: BSP

Max. Pressure 3600 psi (250 bar)

Features

Note: The maximum allowable pressure for the standard aluminum-alloy bodies is 250 bar; we also supply the ductile iron and steel bodies for higher pressure need.

Dimensions



MANIFOLD FOR CARTRIDGE VALVE

Specifications

| Ordering Code | Ports | Weight kg (lbs) |
|---------------|-------|--------------------|
| CST-16A-3G-A | G 3/4 | 1.21 |
| CST-16A-3G-B | G 1 | (2.67) |
| CST-17A-3G-A | G 3/4 | 1.69 |
| CST-17A-3G-B | G 1 | (3.73) |
| CST-18A-3G-A | G 1/4 | 2.83 |
| CST-18A-3G-B | G 3/8 | (6.24) |

Cavity CST-16A / CST-17A / CST-18A

Piping Threads

1P: PT 2N: NPT 3G: PF (G) 4A: SAE 5B: BSP

Max. Pressure 3600 psi (250 bar)

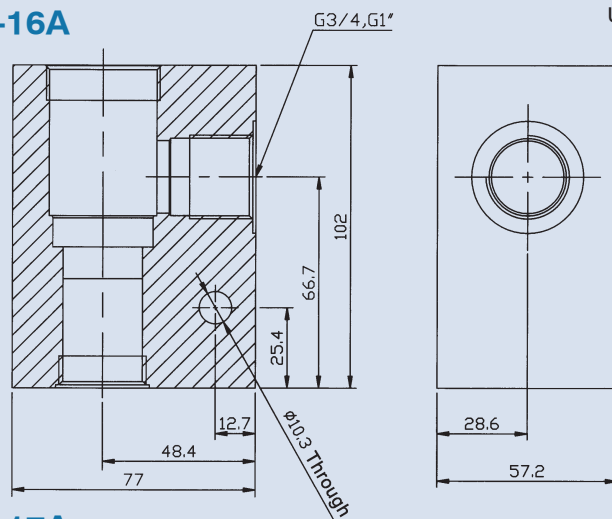
Features

Note: The maximum allowable pressure for the standard aluminum-alloy bodies is 250 bar; we also supply the ductile iron and steel bodies for higher pressure need.

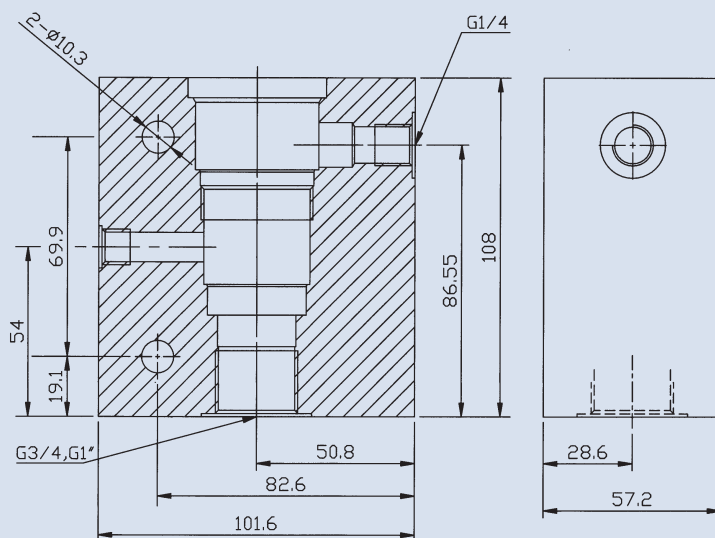
Dimensions

CST-16A

Unit: mm



CST-17A



CST-18A

