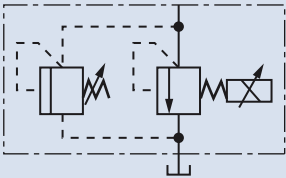
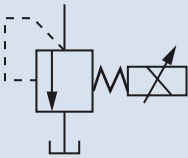


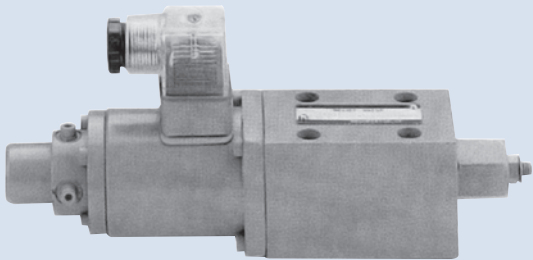
PROPORTIONAL ELECTRO-HYDRAULIC PILOT RELIEF VALVE



With Safety valve



Without Safety valve



How to order

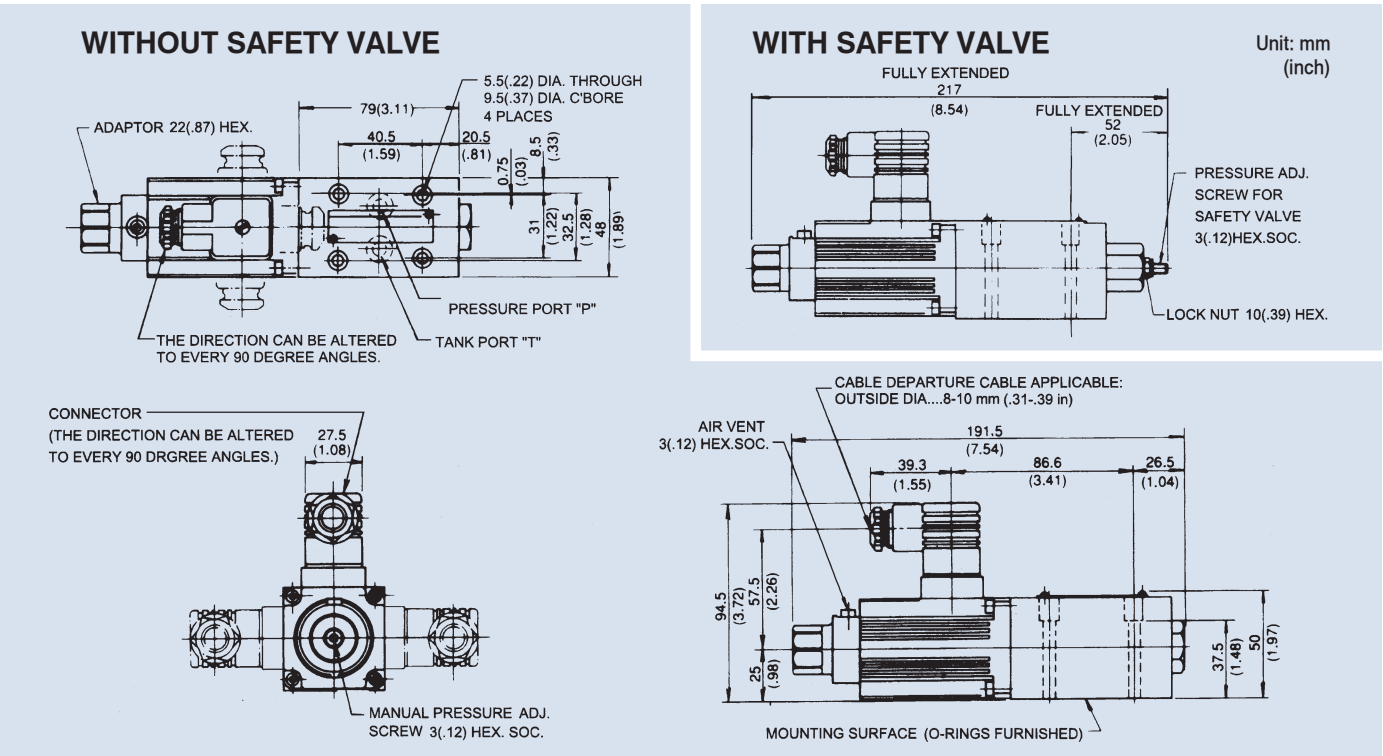
ED G - 01 V - H - ✖

1	2	3	4	5	6
1	Model				
2	Mounting type G: Sub-plate mounting				
3	Valve size 01				
4	Omit: General use V: Vent control of relief valve				
5	Pressure adjusting range B: 5~70 bar C: 10~160 bar H: 12~250 bar				
6	Omit: Without safety valve (general use) 1: With safety valve				

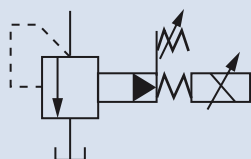
Specifications

Model	Max. Pressure (bar)	Flow (lpm)		Pressure Adj. Range (bar)	Rated current (mA)	Coil Resistance (Ω)	Weight (kg)
		Max.	Min.				
EDG-01	250	2	0.3	B: 5~70 C: 10~160 H: 12~250	B: 800 C: 900 H: 950	10	2

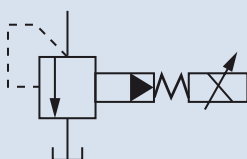
Dimensions



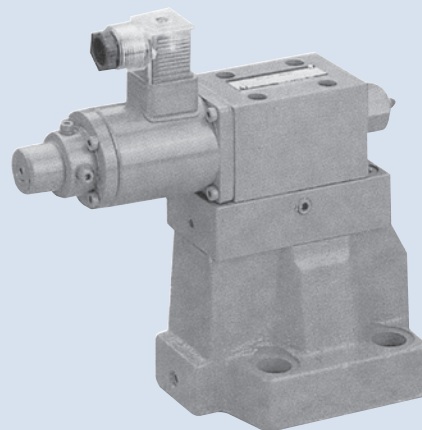
PROPORTIONAL ELECTRO-HYDRAULIC RELIEF VALVE



With Safety valve



Without Safety valve



How to order

EB G - 03 - C - T

1 2 3 4 5

- 1 Model
- 2 Mounting type G: Sub-plate mounting
- 3 Valve size 03, 06
- 4 Pressure adjusting range C: 10~160 bar H: 12~250 bar
- 5 T: Without safety valve (general use) Omit: With safety valve

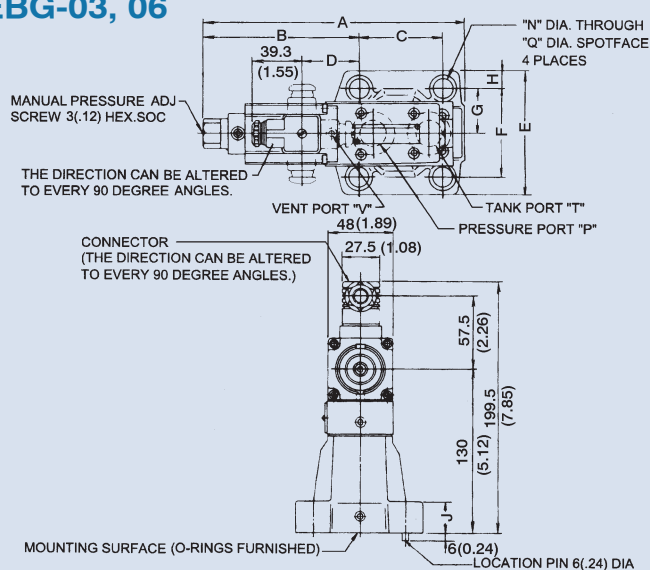
Specifications

Model	Max. Pressure (bar)	Flow (lpm)		Pressure Adj. Range (bar)	Rated current (mA)	Coil Resistance (Ω)	Weight (kg)
		Max.	Min.				
EBG-03	250	100	3	C: 10~160	C: 770 H: 820	10	7.1
EBG-06		200	3	H: 12~250	C: 750 H: 800		8.3

Dimensions

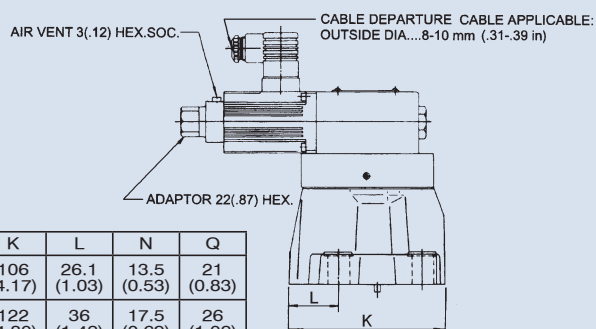
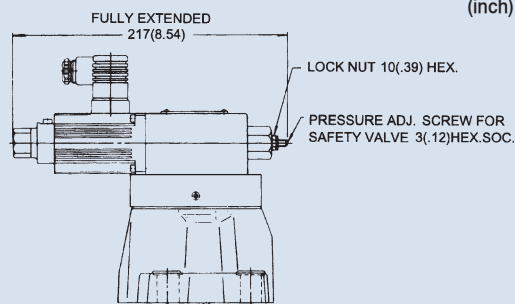
EBG-03, 06

WITHOUT SAFETY VALVE



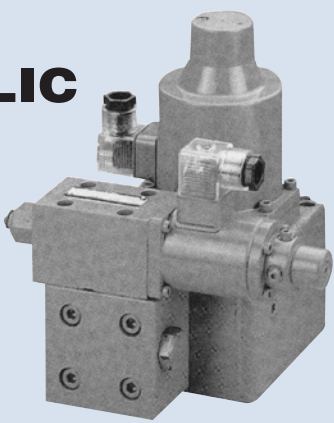
WITH SAFETY VALVE

Unit: mm (inch)



Model	A	B	C	D	E	F	G	H	J	K	L	N	Q
EBG-03	198.5 (7.81)	118.6 (4.67)	53.8 (2.12)	40.2 (1.58)	76 (2.99)	53.8 (2.12)	26.9 (1.06)	11.1 (0.44)	21.5 (0.85)	106 (4.17)	26.1 (1.03)	13.5 (0.53)	21 (0.83)
EBG-06	206.5 (8.13)	120.5 (4.74)	66.7 (2.63)	42.1 (1.66)	98 (3.86)	70 (2.76)	35 (1.38)	14 (0.55)	26 (1.02)	122 (4.80)	36 (1.42)	17.5 (0.69)	26 (1.02)

PROPORTIONAL ELECTRO-HYDRAULIC RELIEF AND FLOW CONTROL VALVE



FEATURES:

This relief and flow control valve is an energy-saving valve that supplies the minimum pressure and flow necessary for actuator drive.

Since this valve controls the pump pressure by following the load pressure while keeping the differential pressure minimized, it serves as a low power-consumption energy-saving, metre-in, controlled flow control valve.

Further, since a temperature compensation function is incorporated, this valve provides consistent flow control without respect to the fluid temperature.

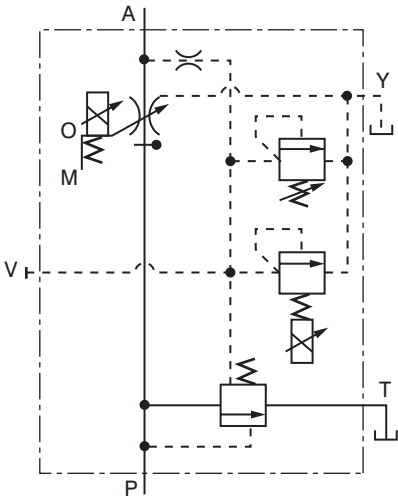
How to order

EFB G - 03 - 125 - C

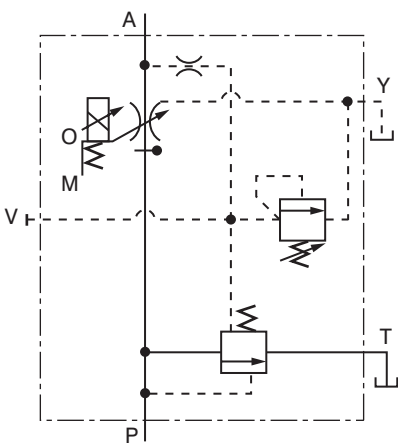
	1	2	3	4	5
1	Model				
2	Mounting type G: Sub-plate mounting				
3	Valve size 03, 06, 10				
4	Flow Adj. range (lpm) 03: 1~60, 1~125 (standard), 1~160 06: 2.5~250 (standard), 2.5~320, 2.5~350 10: 5~500				
5	With proportional relief valve pressure adjusting range C: 14~140 bar H: 14~210 bar Omit: Without proportional relief valve				

Specifications

Model	Flow Adj. Range (lpm)	Flow Controls			Pressure Controls			Weight (kg)
		Rated current (mA)	Coil Res. (Ω)	Diff. Press (bar)	Pressure Adj. Range (bar)	Rated current (mA)	Coil Res. (Ω)	
EFBG-03	1~60 1~125 1~160	680	43.5	6	C: 14~140 H: 14~210	C: 710 H: 770	10	18
EFBG-06	2.5~250 2.5~320 2.5~350	580		7	C: 15~140 H: 15~210	C: 690 H: 730		33
EFBG-10	5~500	700		9	C: 16~140 H: 16~210	C: 690 H: 690		58



WITH PROPORTIONAL PILOT RELIEF VALVE



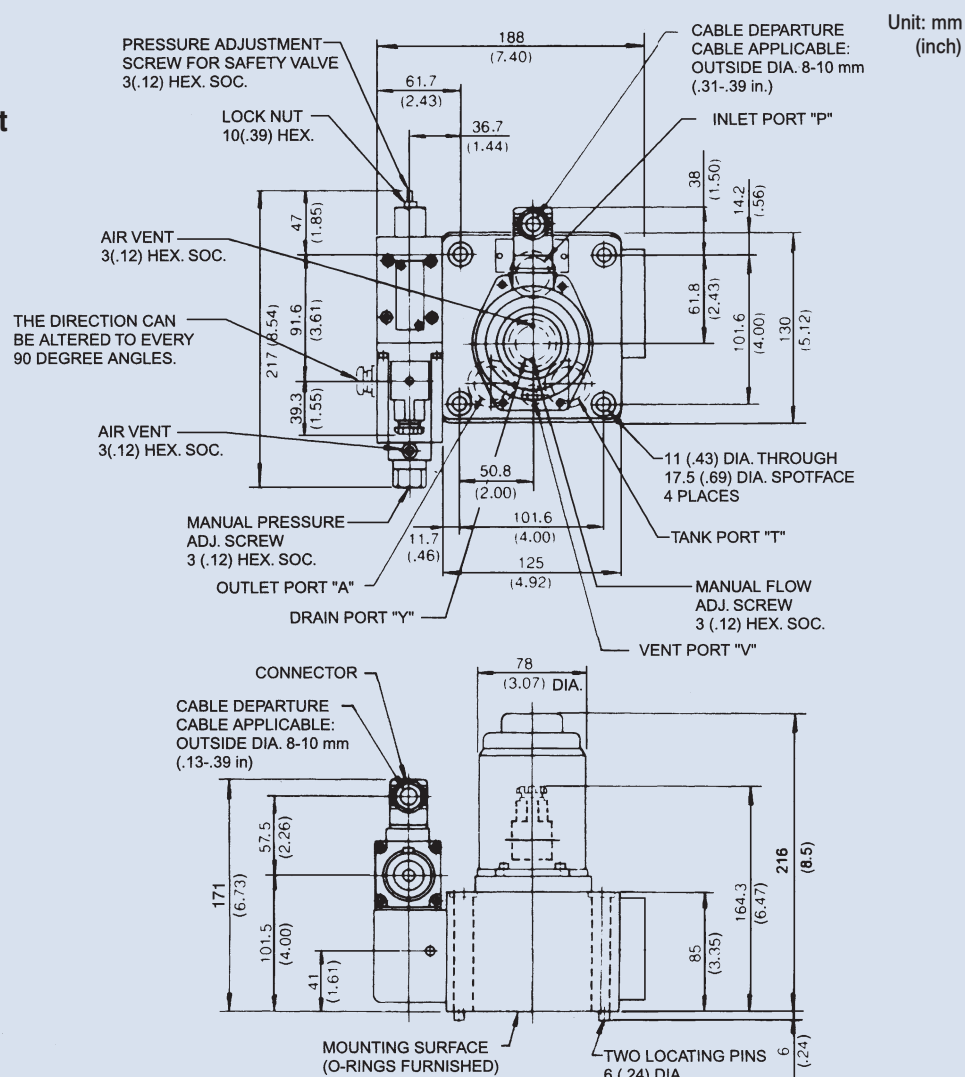
WITHOUT PROPORTIONAL PILOT RELIEF VALVE

PROPORTIONAL ELECTRO-HYDRAULIC RELIEF AND FLOW CONTROL VALVE

Dimensions

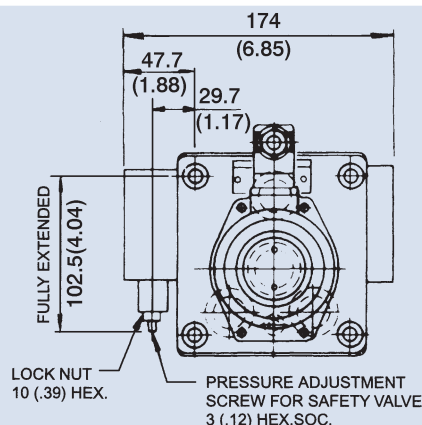
EFBG-03-125-CH

(With proportional pilot relief valve)
WEIGHT: 16 kg



EFBG-03-125

(Without proportional pilot relief valve)
WEIGHT: 14 kg



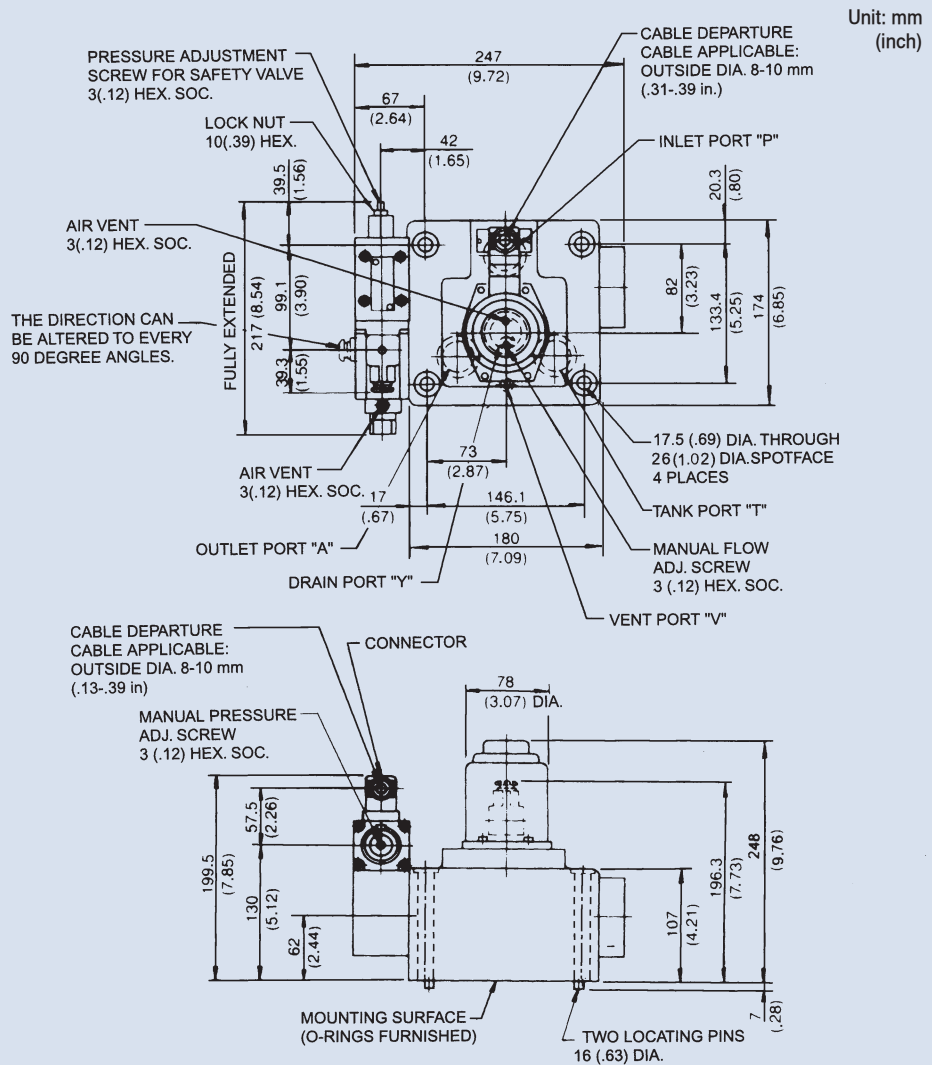
For other dimensions, please refer to the model above.

PROPORTIONAL ELECTRO-HYDRAULIC RELIEF AND FLOW CONTROL VALVE

Dimensions

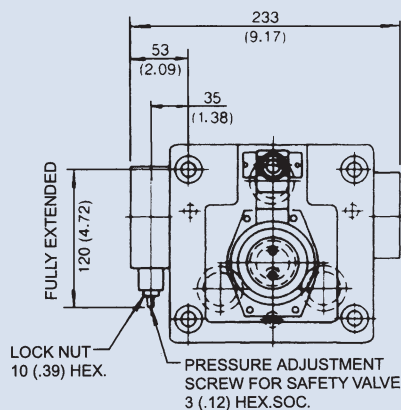
EFBG-06-250-^C_H

(With proportional pilot relief valve)
WEIGHT: 30 kg



EFBG-06-250

(Without proportional pilot relief valve)
WEIGHT: 28 kg



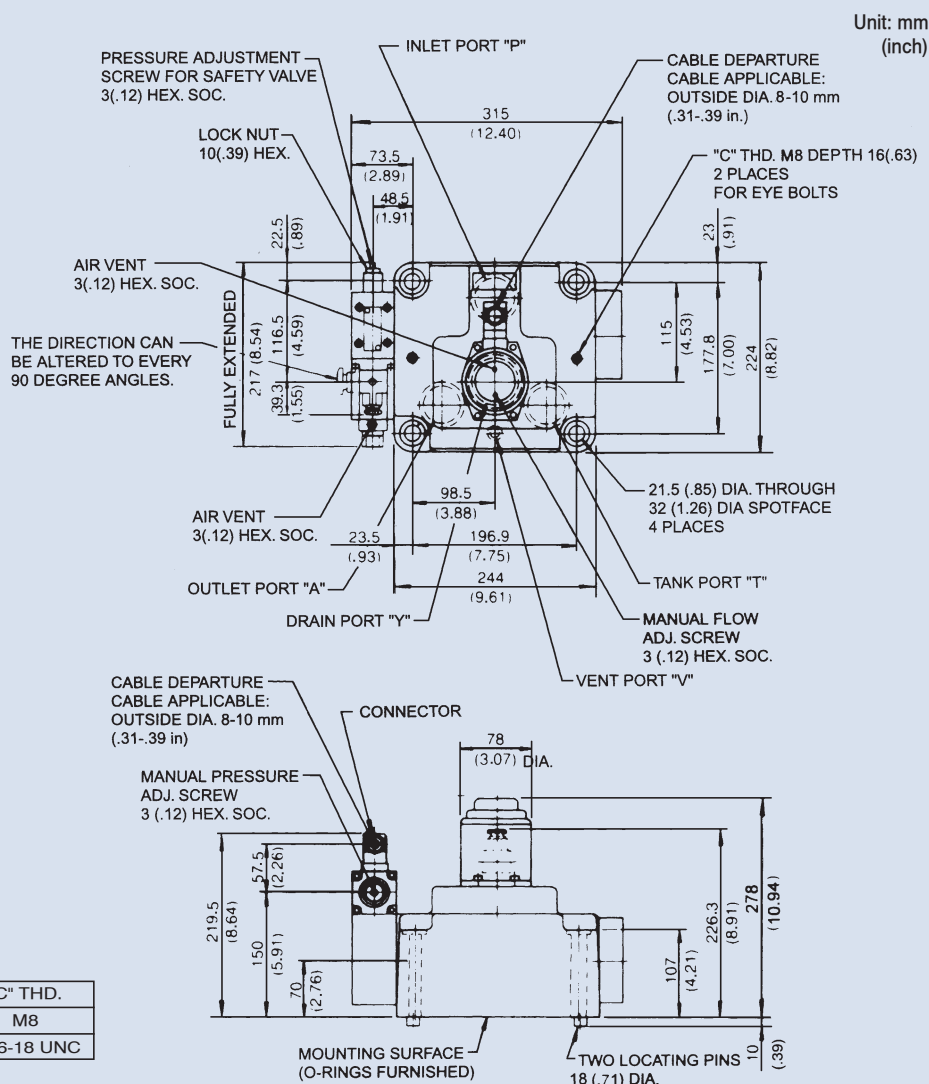
For other dimensions, please refer to the model above.

PROPORTIONAL ELECTRO-HYDRAULIC RELIEF AND FLOW CONTROL VALVE

Dimensions

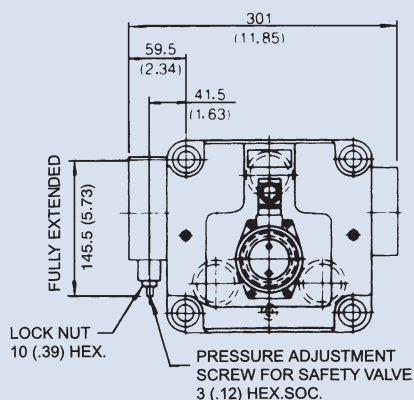
EFBG-10-500-CH

(With proportional pilot relief valve)
WEIGHT: 60 kg



EFBG-10-500

(Without proportional pilot relief valve)
WEIGHT: 58 kg

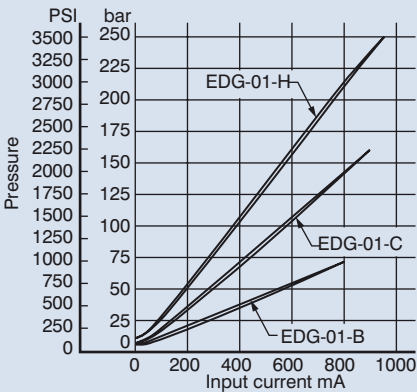


For other dimensions, please refer to the model above.

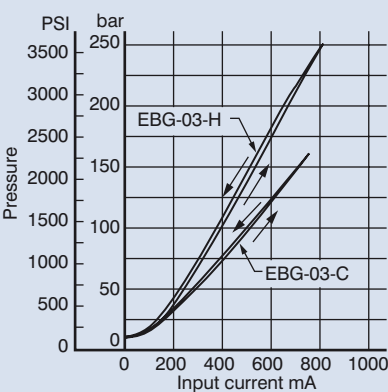
PROPORTIONAL ELECTRO-HYDRAULIC RELIEF VALVE, RELIEF AND FLOW CONTROL VALVE

Performance curves

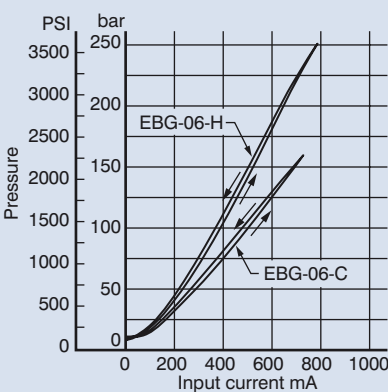
EDG-01



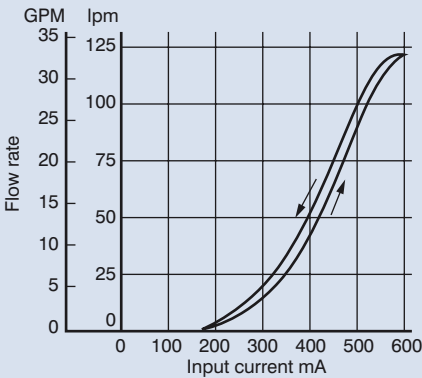
EBG-03



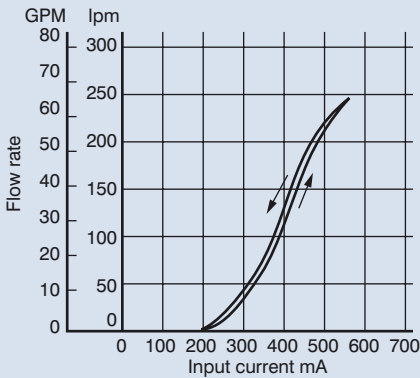
EBG-06



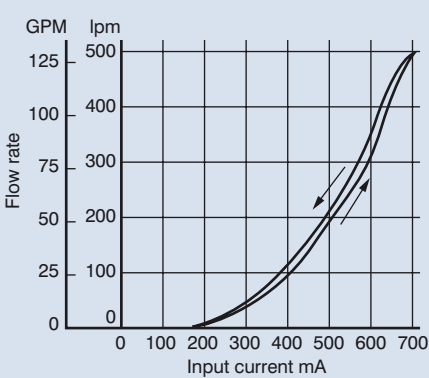
EFBG-03



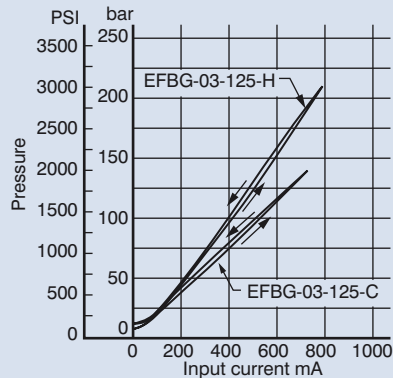
EFBG-06



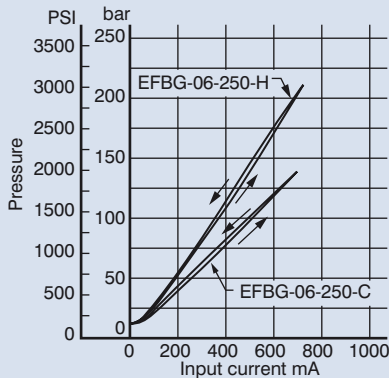
EFBG-10



EFBG-03



EFBG-06



EFBG-10

