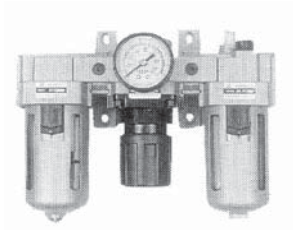
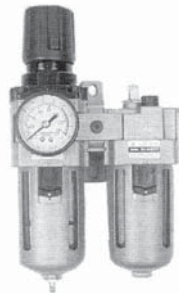


# MODULAR TYPE AIR COMBINATION SET

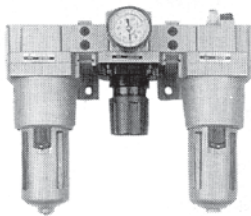
**YAC3000  
YAC4000**



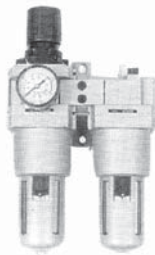
**YAC3010  
YAC4010**



**YAC5000**

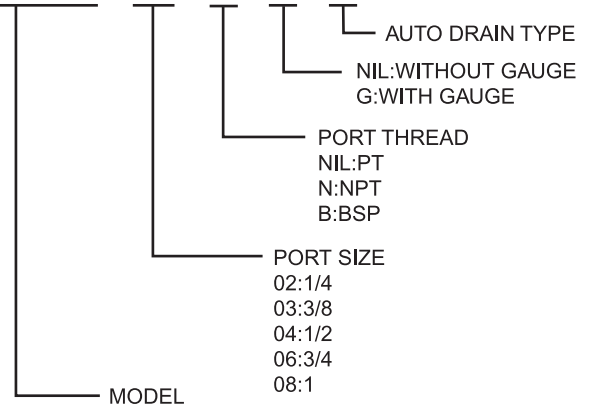


**YAC5010**

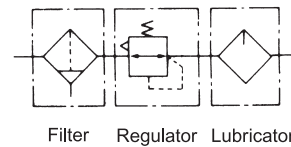


## HOW TO ORDER

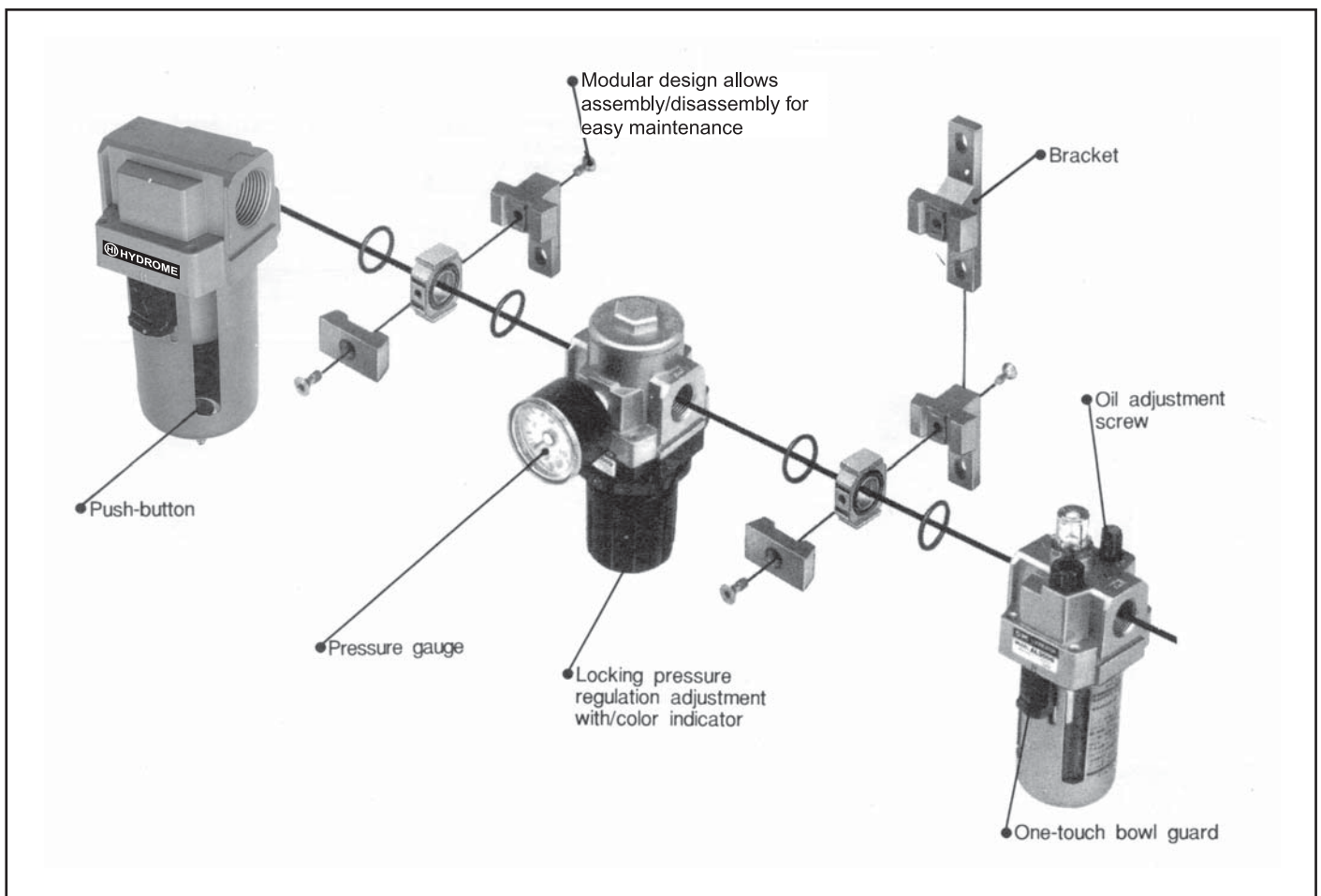
**YAC3000 - 03 - N - G - D**



## Symbol



## DECOMPOSITION



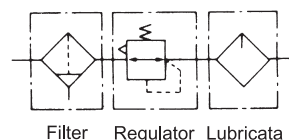
# MODULAR TYPE AIR COMBINATION SET

## SPECIFICATIONS

| MODEL                                       |            | YAC 3000                               | YAC 4000  | YAC 5000              |
|---|------------|--|---|-----------------------|
| Combination                                 | Air filter | YAF 3000                               | YAF 4000  | YAF 5000              |
|   | Regulator  | YAR 3000                               | YAR 4000  | YAR 5000              |
|   | Lubricator | YAL 3000                               | YAL 4000  | YAL 5000              |
| Port size                                   |            | $\frac{1}{4} \cdot \frac{3}{8}$        | $\frac{3}{8} \cdot \frac{1}{2} \cdot \frac{3}{4}$ | $\frac{3}{4} \cdot 1$ |
| Port size for pressure gauge                |            | $\frac{1}{8}$                          | $\frac{1}{4}$                                     | $\frac{1}{4}$         |
| Max. supply pressure kgf/cm <sup>2</sup>    |            | 15                                     |   |                       |
| Max. operating pressure kgf/cm <sup>2</sup> |            | 9.9                                    |   |                       |
| Regulating range kgf/cm <sup>2</sup>        |            | 0.5-8.5                                |   |                       |
| Max.Flow rate NI/min                        |            | 2000                                   | 4000  | 5000                  |
| Ambient and media temperature               |            | -5~60°C                                |   |                       |
| Filtration                                  |            | Standard:5 μ m, Option: 2,10,20,40 μ m |   |                       |
| Recommended oil                             |            | Turbin oil ISO VG32                    |   |                       |
| Bowl material                               |            | Polycarbonate                          |   |                       |
| Construction/Regulator                      |            | Relieving type                         |   |                       |
| Weight kg                                   |            | 1.27                                   | 2.52  | 4.36                  |
| Accessories (standard)                      | Bowl guard | •                                      | •   | •                     |
|   | Bracket    | B310L                                  | B410L   | B610L                 |

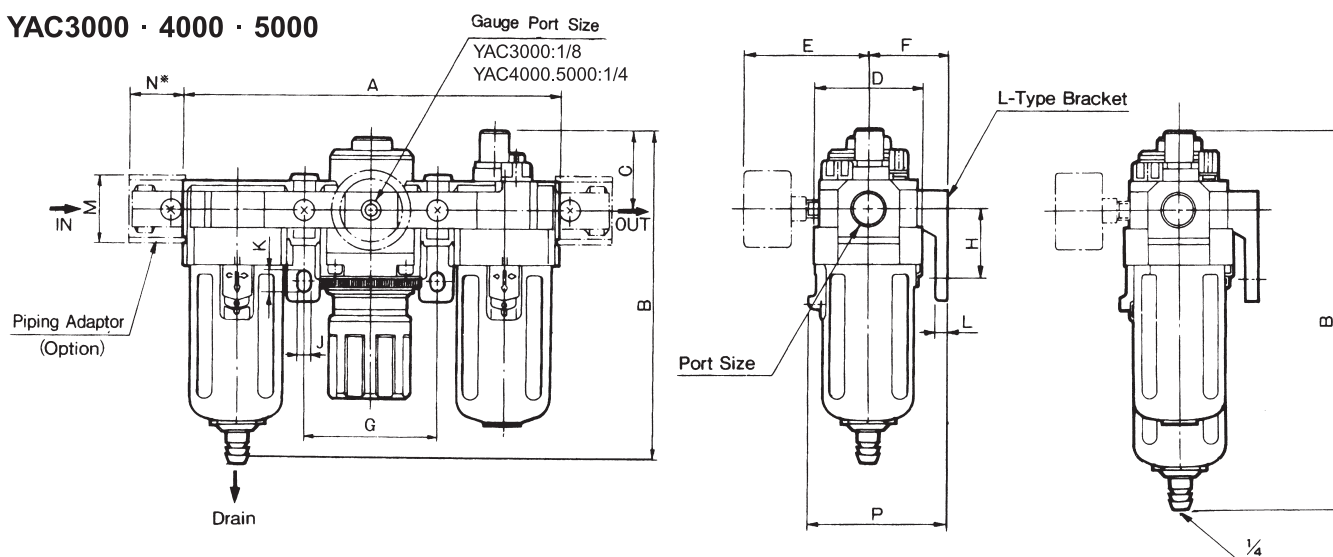
\*Conditions: Supply pressure 7kgf/cm<sup>2</sup>, setting pressure:5kgf/cm<sup>2</sup>

Symbol



## DIMENSIONS (mm)

### YAC3000 · 4000 · 5000



| MODEL    | PORT SIZE   | A   | B     | C  | D  | E    | F  | G   | H  | J  | K    | L  | M    | N   | P    |
|----------|---|-----|-------|----|----|------|----|-----|----|----|------|----|------|-----|------|
| YAC 3000 | $\frac{1}{4} \cdot \frac{3}{8}$                   | 181 | 156.5 | 38 | 53 | 60.8 | 41 | 64  | 34 | 7  | 11   | 7  | 34.2 | 26* | 70.5 |
| YAC 4000 | $\frac{3}{8} \cdot \frac{1}{2} \cdot \frac{3}{4}$ | 238 | 191.5 | 41 | 70 | 65.5 | 50 | 84  | 40 | 9  | 13   | 7  | 42.2 | 33* | 88   |
| YAC 5000 | $\frac{3}{4} \cdot 1$                             | 300 | 267   | 45 | 90 | 75   | 70 | 105 | 50 | 12 | 15.5 | 10 | 55.2 | 40* | 115  |

\*Pressure Gauge 40 mm for YAC3000. 50mm for YAC4000.5000

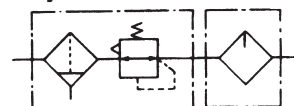
# MODULAR TYPE AIR COMBINATION SET

## SPECIFICATIONS

| MODEL                                       |                  | YAC 3010                               | YAC 4010  | YAC 5010              |
|---|------------------|--|---|-----------------------|
| Combination                                 | Filter Regulator | YAW 3000                               | YAW 4000  | YAW 5000              |
|   | Lubricator       | YAL 3000                               | YAL 4000  | YAL 5000              |
| Port size                                   |                  | $\frac{1}{4} \cdot \frac{3}{8}$        | $\frac{3}{8} \cdot \frac{1}{2} \cdot \frac{3}{4}$ | $\frac{3}{4} \cdot 1$ |
| Port size for pressure gauge                |                  | $\frac{1}{8}$                          | $\frac{1}{4}$                                     | $\frac{1}{4}$         |
| Max. supply pressure kgf/cm <sup>2</sup>    |                  | 15                                     |   |                       |
| Max. operating pressure kgf/cm <sup>2</sup> |                  | 9.9                                    |   |                       |
| Regulating range kgf/cm <sup>2</sup>        |                  | 0.5-8.5                                |   |                       |
| Max.Flow rate NI/min                        |                  | 1700                                   | 3000  | 5000                  |
| Ambient and media temperature               |                  | -5~60°C                                |   |                       |
| Filtration                                  |                  | Standard:5 μ m, Option: 2,10,20,40 μ m |   |                       |
| Recommended oil                             |                  | Turbin oil ISO VG32                    |   |                       |
| Bowl material                               |                  | Polycarbonate                          |   |                       |
| Construction/Regulator                      |                  | Relieving type                         |   |                       |
| Weight kg                                   |                  | 0.98                                   | 1.93  | 3.56                  |
| Accessories (standard)                      | Bowl guard       | •                                      | •   | •                     |
|   | Bracket          | B310T                                  | B410T   | B610T                 |

\*Conditions: Supply pressure 7kgf/cm<sup>2</sup>, setting pressure:5kgf/cm<sup>2</sup>

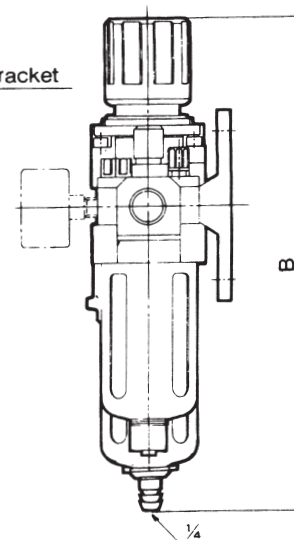
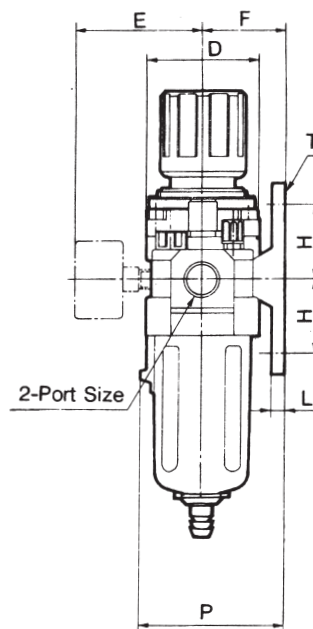
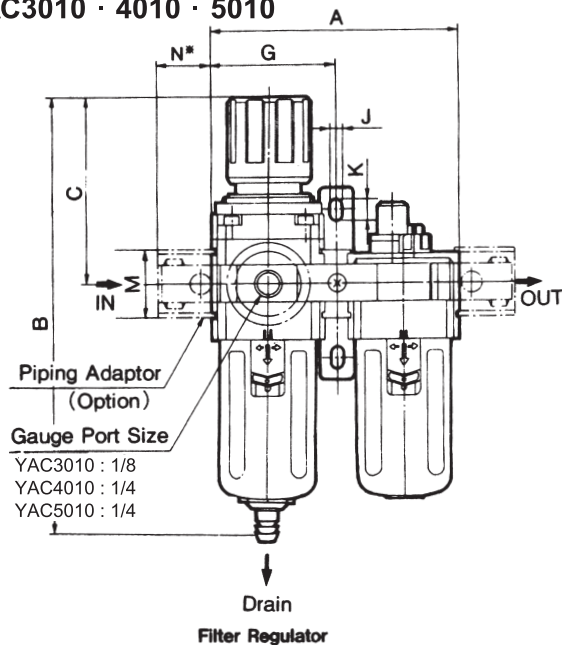
Symbol



Filter Regulator Lubricator

## DIMENSIONS (mm)

YAC3010 · 4010 · 5010



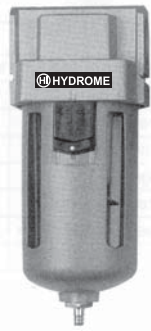
With Auto Drain (Float type)

| MODEL    | PORT SIZE   | A   | B     | C    | D  | E    | F  | G    | H  | J  | K    | L  | M    | N   | P    |
|----------|---|-----|-------|------|----|------|----|------|----|----|------|----|------|-----|------|
| YAC 3010 | $\frac{1}{4} \cdot \frac{3}{8}$                   | 117 | 211   | 92.5 | 53 | 60.8 | 41 | 58.5 | 35 | 7  | 11   | 7  | 34.2 | 26* | 70.5 |
| YAC 4010 | $\frac{3}{8} \cdot \frac{1}{2} \cdot \frac{3}{4}$ | 154 | 262.5 | 112  | 70 | 70.5 | 50 | 77   | 40 | 9  | 13   | 7  | 42.2 | 33* | 88   |
| YAC 5010 | $\frac{3}{4} \cdot 1$                             | 195 | 330   | 120  | 90 | 75   | 70 | 97.5 | 50 | 12 | 15.5 | 10 | 55.2 | 40* | 115  |

\*Pressure Gauge 40 mm for YAC3010. 50mm for YAC4010.5010

# AIR FILTER

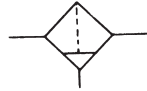
YAF3000  
YAF4000



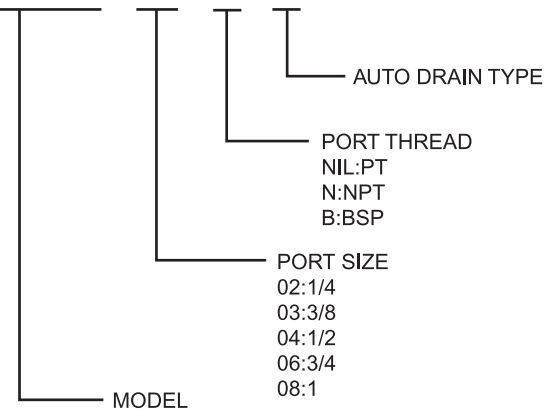
YAF5000



Symbol



## HOW TO ORDER YAF3000 - 03 - N - D



## SPECIFICATIONS

| MODEL                                       | YAF 3000                                    | YAF 4000  | YAF 5000              |
|---|---|---|-----------------------|
| Port size                                   | $\frac{1}{4} \cdot \frac{3}{8}$             | $\frac{3}{8} \cdot \frac{1}{2} \cdot \frac{3}{4}$ | $\frac{3}{4} \cdot 1$ |
| Max. supply pressure kgf/cm <sup>2</sup>    | 15  |   |                       |
| Max. operating pressure kgf/cm <sup>2</sup> | 9.9   |   |                       |
| Ambient and media temperature               | -5~60°C                                     |   |                       |
| Filtration                                  | Standard:5 μm, Option: 2,10,20,40,70,100 μm |   |                       |
| Bowl material                               | Polycarbonate                               |   |                       |
| Bowl capacity cm <sup>3</sup>               | 20  | 45  | 130                   |
| Weight kg                                   | 0.24  | 0.45  | 0.99                  |
| Accessory(standard)                         | Bowl guard                                  | •   | •                     |

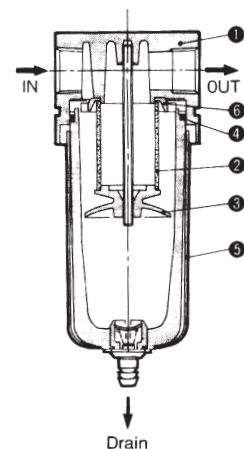
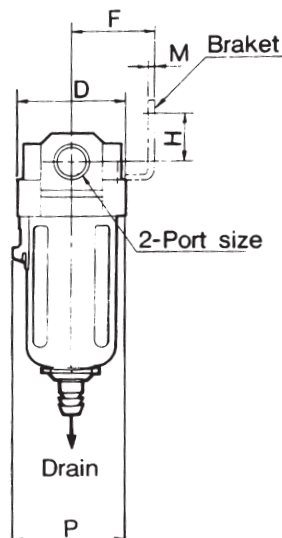
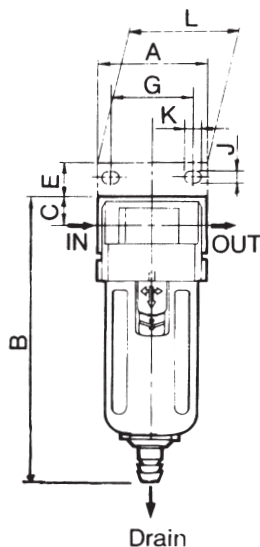
## MAIN PARTS

| NO. | NAME | MATERIAL             | NOTE                     |
|-----|------|----------------------|--------------------------|
|     |      | YAF3000,4000,5000    |                          |
| ①   | Body | Aluminum die casting | Platinum silver Painting |

## PARTS LIST

| NO. | PART NAME      | MATERIAL      | PART NO.  |          |          |
|-----|----------------|---------------|-----------|----------|----------|
|     |                |               | YAF3000   | YAF4000  | YAF5000  |
| ②   | Filter element | Polyrex       | 111511-5B | 11104-5B | 11173-5B |
| ③   | Baffle         | ABS           | 111522    | 111622   | 11175    |
| ④   | O-ring         | NBR           | 111512    | 111636   | 111636   |
| ⑤   | Bowl assembly  | Polycarbonate | C300F     | C400F    | C400F    |
| ⑥   | Deflector      | ABS           | 11158     | 11167    | 11176    |

## DIMENSIONS (mm)



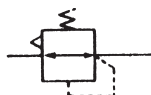
| MODEL    | PORT SIZE   | A  | B     | C  | D  | E  | F  | G  | H  | J   | K    | L  | M   | P  |
|----------|---|----|-------|----|----|----|----|----|----|-----|------|----|-----|----|
| YAF 3000 | $\frac{1}{4} \cdot \frac{3}{8}$                   | 53 | 132.5 | 14 | 53 | 16 | 41 | 40 | 23 | 6.5 | 8    | 53 | 2.3 | 56 |
| YAF 4000 | $\frac{3}{8} \cdot \frac{1}{2} \cdot \frac{3}{4}$ | 70 | 168.5 | 18 | 70 | 17 | 50 | 54 | 26 | 8.5 | 10.5 | 70 | 2.3 | 73 |
| YAF 5000 | $\frac{3}{4} \cdot 1$                             | 90 | 247   | 24 | 90 | 23 | 70 | 66 | 35 | 11  | 13   | 90 | 3.2 | 90 |

# AIR REGULATOR

YAR3000,4000,5000



Symbol



## HOW TO ORDER

YAR3000 - 03 - N - G

NIL:WITHOUT GAUGE  
G:WITH GAUGE

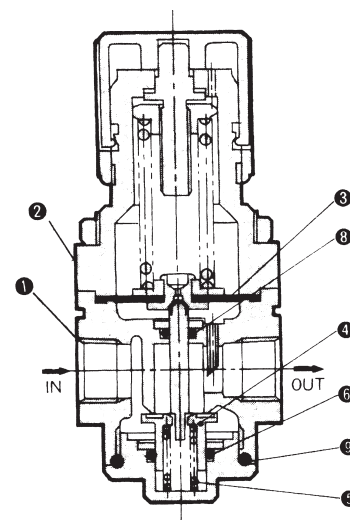
PORT THREAD  
NIL:PT  
N:NPT  
B:BSP

PORT SIZE  
02:1/4  
03:3/8  
04:1/2  
06:3/4  
08:1

MODEL

## SPECIFICATIONS

| MODEL                                       | YAR 3000  | YAR 4000        | YAR 5000 |
|---|-----------|-----------------|----------|
| Port size                                   | 1/4 · 3/8 | 3/8 · 1/2 · 3/4 | 3/4 · 1  |
| Max. supply pressure kgf/cm <sup>2</sup>    | 15        |                 |          |
| Max. operating pressure kgf/cm <sup>2</sup> | 9.9       |                 |          |
| Regulating range kgf/cm <sup>2</sup>        | 0.5~8.5   |                 |          |
| Port size for pressure gauge                | 1/8       | 1/4             | 1/4      |
| Ambient and media temperature               | -5~60°C   |                 |          |
| Weight kg                                   | 0.44      | 0.92            | 1.4      |



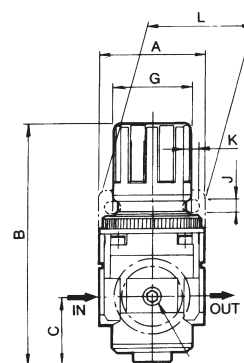
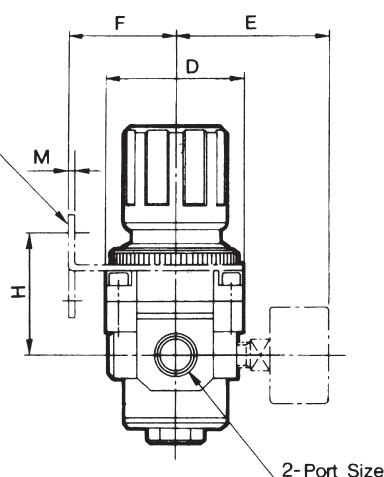
## MAIN PARTS

| NO. | NAME   | MATERIAL             | NOTE                     |
|-----|--------|----------------------|--------------------------|
|     |        | YAR3000,4000,5000    |                          |
| ①   | Body   | Aluminum die casting | Platinum silver Painting |
| ②   | Bonnet | Polyacetal           | Black painting           |

## PARTS LIST

| NO. | PART NAME             | MATERIAL        | PART NO.    |            |             |
|-----|-----------------------|-----------------|-------------|------------|-------------|
|     |                       |                 | YAR3000     | YAR4000    | YAR5000     |
| ③   | Diaphragm ass'y       | NBR             | 131515A     | 131614A    | 131614A     |
| ④   | Valve ass'y           | Brass. NBR      | 13154A      | 13164A     | 13173A      |
| ⑤   | Valve spring          | Stainless steel | 131558      | 131613     | 13174       |
| ⑥   | Valve O-ring          | NBR             | JISB2401P14 | 131643     | 131710      |
| ⑦   | Piston mini Y packing | NBR             | -           | -          | -           |
| ⑧   | O-ring                | NBR             | JISB2401P5  | JISB2401P5 | JISB2401P5  |
| ⑨   | O-ring                | NBR             | 131545      | 131647     | JISB2401P50 |

Bracket



Gauge Port

YAR3000:1/8  
YAR4000:1/4  
YAR5000:1/4

## DIMENSIONS (mm)

| MODEL    | PORT SIZE       | A  | B     | C    | D  | E    | F  | G  | H  | J   | K    | L  | M   |
|----------|-----------------|----|-------|------|----|------|----|----|----|-----|------|----|-----|
| YAR 3000 | 1/4 · 3/8       | 53 | 127.5 | 35   | 53 | 60.8 | 41 | 40 | 46 | 6.5 | 8    | 53 | 2.3 |
| YAR 4000 | 3/8 · 1/2 · 3/4 | 70 | 149.5 | 37.5 | 70 | 65.5 | 50 | 54 | 54 | 8.5 | 10.5 | 70 | 2.3 |
| YAR 5000 | 3/4 · 1         | 90 | 164   | 48   | 90 | 75   | 47 | 42 | 63 | 85  | 10.5 | 65 | 2.3 |

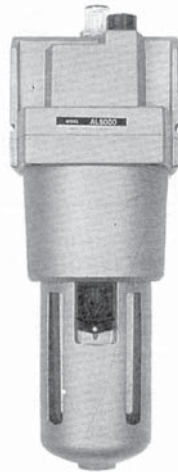


# AIR LUBRICATOR

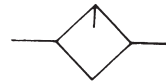
YAL3000,4000



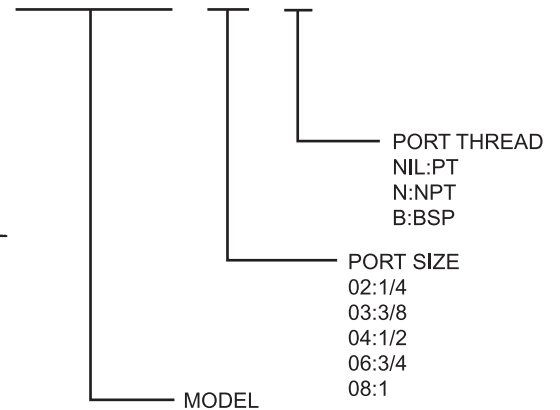
YAL5000



Symbol



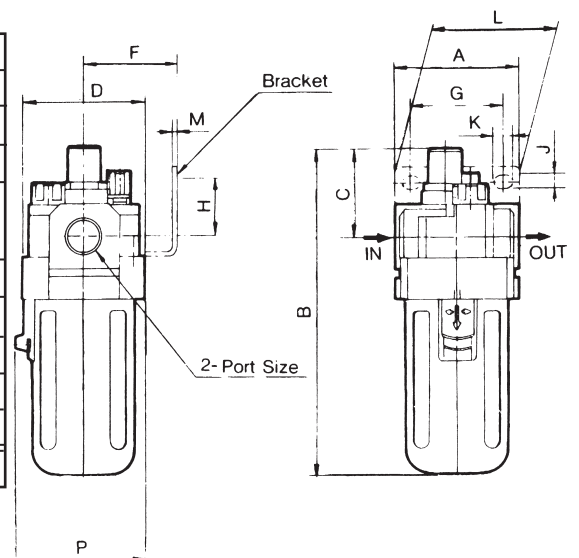
## HOW TO ORDER YAL3000 - 03 - N



## SPECIFICATIONS

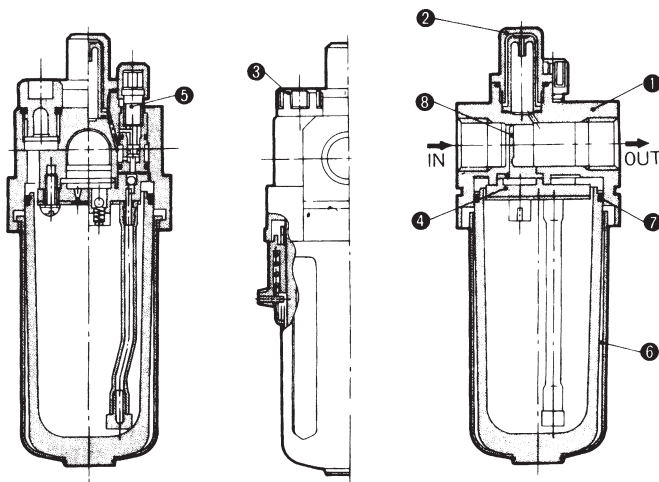
| MODEL                                       | YAL 3000             | YAL 4000             | YAL 5000 |
|---|----------------------|----------------------|----------|
| Port size                                   | 1/4 · 3/8            | 3/8 · 1/2 · 3/4      | 3/4 · 1  |
| Max. supply pressure kgf/cm <sup>2</sup>    | 15                   |                      |          |
| Max. operating pressure kgf/cm <sup>2</sup> | 9.9                  |                      |          |
| Min operating flow*NI/min                   | 1/4 : 30<br>3/8 : 40 | 3/8 : 40<br>1/2 : 50 | 190      |
| Bowl capacity cm <sup>3</sup>               | 50                   | 130                  | 130      |
| Recommended oil                             | ISO VG32             |                      |          |
| Ambient and media temperature               | -5~60°C              |                      |          |
| Bowl material                               | Polycarbonate        |                      |          |
| Weight kg                                   | 0.27                 | 0.49                 | 1.08     |
| Accessory(standard)                         | Bowl guard           | •                    | •        |

\*Conditions: Supply pressure;5kg/cm<sup>2</sup>, Number of drop;5 drops/min,ISOVG32.



## MAIN PARTS

| NO. | NAME | MATERIAL             | NOTE                     |
|-----|------|----------------------|--------------------------|
|     |      | YAL3000,4000,5000    |                          |
| ①   | Body | Aluminum die casting | Platinum silver Painting |



## PARTS LIST

| NO. | PART NAME          | MATERIAL        | PART NO.               |                        |         |
|-----|--------------------|-----------------|------------------------|------------------------|---------|
|     |                    |                 | YAL3000                | YAL4000                | YAL5000 |
| ②   | Sight dome ass'y   | Polycarbonate   | 12155A                 | 12155A                 | 12155A  |
| ③   | Filler cap ass'y   | -               | 12159A                 | 12164A                 | 12164A  |
| ④   | Damper guide ass'y | -               | 121521A                | 121611A                | 12325A  |
| ⑤   | Needle valve ass'y | -               | 121522A                | 121522A                | 121616A |
| ⑥   | Bowl ass'y*        | -               | C300L                  | C400L                  | C400L   |
| ⑦   | O-ring             | NBR             | 111512                 | 111636                 | 111636  |
| ⑧   | Damper             | Synthetic resin | 12158 -2(03)<br>-1(02) | 12165 -2(04)<br>-1(03) | 123210A |

\*Bowl Assemblies of AL3000, AL4000 and AL5000 are fitted with bowl guard.

| MODEL    | PORT SIZE       | A  | B   | C  | D  | F  | G  | H  | J   | K    | L  | M   | P  |
|----------|-----------------|----|-----|----|----|----|----|----|-----|------|----|-----|----|
| YAL 3000 | 1/4 · 3/8       | 53 | 142 | 38 | 53 | 41 | 40 | 23 | 6.5 | 8    | 53 | 2.3 | 56 |
| YAL 4000 | 3/8 · 1/2 · 3/4 | 70 | 177 | 41 | 70 | 50 | 54 | 26 | 8.5 | 10.5 | 70 | 2.3 | 73 |
| YAL 5000 | 3/4 · 1         | 90 | 254 | 45 | 90 | 70 | 66 | 35 | 11  | 13   | 90 | 3.2 | 90 |

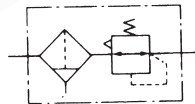
# AIR FILTER REGULATOR

YAW3000  
YAW4000

YAW5000



Symbol



## HOW TO ORDER

YAW3000 - 03 - N - G - D

AUTO DRAIN

NIL:WITHOUT GAUGE  
G:WITH GAUGE

PORT THREAD

NIL:PT  
N:NPT  
B:BSP

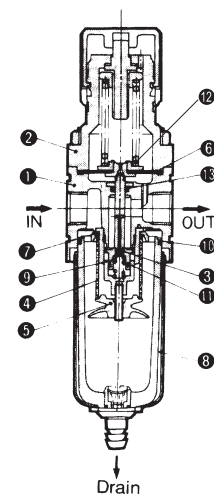
PORT SIZE

02:1/4  
03:3/8  
04:1/2  
06:3/4  
08:1

MODEL

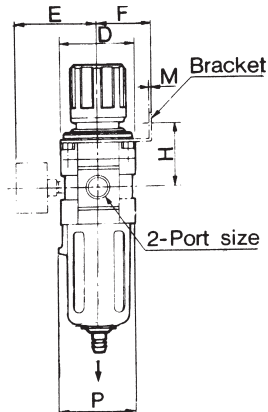
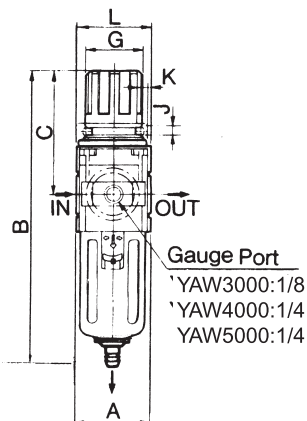
## SPECIFICATIONS

| MODEL                                       | YAW 3000                             | YAW 4000  | YAW 5000              |
|---|--------------------------------------|---|-----------------------|
| Port size                                   | $\frac{1}{4} \cdot \frac{3}{8}$      | $\frac{3}{8} \cdot \frac{1}{2} \cdot \frac{3}{4}$ | $\frac{3}{4} \cdot 1$ |
| Max. supply pressure kgf/cm <sup>2</sup>    | 15                                   |   |                       |
| Max. operating pressure kgf/cm <sup>2</sup> | 9.9                                  |   |                       |
| Regulating range kgf/cm <sup>2</sup>        | 0.5 - 8.5                            |   |                       |
| Port size for pressure gauge                | $\frac{1}{8}$                        | $\frac{1}{4}$                                     | $\frac{1}{4}$         |
| Ambient and media temperature               | -5~60°C                              |   |                       |
| Filtration                                  | Standard:5 μm, Option: 2,10,20,40 μm |   |                       |
| Bowl capacity cm <sup>3</sup>               | 20                                   | 45  | 130                   |
| Bowl material                               | Polycarbonate                        |   |                       |
| Weight kg                                   | 0.53                                 | 1.15  | 2.037                 |
| Accessory(standard)                         | Bowl guard                           | •   | •                     |



## MAIN PARTS

| NO. | NAME   | MATERIAL             |                      |         | NOTE                     |
|-----|--------|----------------------|----------------------|---------|--------------------------|
|     |        | YAW3000              | YAW4000              | YAW5000 |                          |
| ①   | Body   | Aluminum die casting |                      |         | Platinum silver Painting |
| ②   | Bonnet | Polyacetal           | Aluminum Die casting |         | Black painting           |



## PARTS LIST

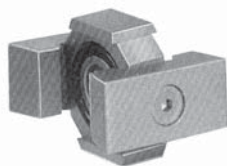
| NO. | PART NAME       | MATERIAL        | PART NO.   |            |            |
|-----|-----------------|-----------------|------------|------------|------------|
|     |                 |                 | YAW3000    | YAW4000    | YAW5000    |
| ③   | Valve ass'y     | Brass. NBR      | 131523A    | 131623A    | 131723A    |
| ④   | Filter element  | Polyrex         | 111511-5B  | 11104-5B   | 11173-5B   |
| ⑤   | Baffle          | ABS             | 111522     | 111622     | 11175      |
| ⑥   | Diaphragm ass'y | NBR             | 131515A    | 131614A    | 131614A    |
| ⑦   | Deflector       | ABS             | 11158      | 11167      | 11176      |
| ⑧   | Bowl ass'y      | Polycarbonate   | C300F      | C400F      | C500F      |
| ⑨   | Valve spring    | Stainless steel | 131525     | 131625     | 131725     |
| ⑩   | Case O-ring     | NBR             | 111512     | 111636     | 111636     |
| ⑪   | Valve O-ring    | NBR             | 131544     | 131645     | 131745     |
| ⑫   | Seal            | NBR             | -          | -          | -          |
| ⑬   | O-ring          | NBR             | JISB2401P5 | JISB2401P5 | JISB2401P5 |

Condition: Bowl assemblies of AW3000, AW4000, AW5000 are fitted with bowl guard.

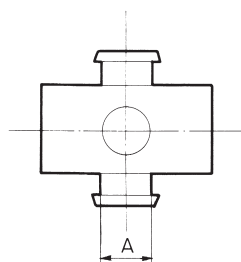
| MODEL    | PORT SIZE   | A  | B     | C    | φD | E    | F  | G  | H  | J   | K    | L  | M   | P  |
|----------|---|----|-------|------|----|------|----|----|----|-----|------|----|-----|----|
| YAW 3000 | $\frac{1}{4} \cdot \frac{3}{8}$                   | 53 | 211   | 92.5 | 53 | 60.8 | 41 | 40 | 46 | 6.5 | 8    | 53 | 2.3 | 56 |
| YAW 4000 | $\frac{3}{8} \cdot \frac{1}{2} \cdot \frac{3}{4}$ | 70 | 262.5 | 112  | 70 | 70.5 | 50 | 54 | 54 | 8.5 | 10.5 | 70 | 2.3 | 73 |
| YAW 5000 | $\frac{3}{4} \cdot 1$                             | 90 | 330   | 120  | 90 | 75   | 70 | 66 | 63 | 11  | 13   | 90 | 3.2 | 90 |

# ACCESSORIES OF AIR COMBINATION SET

## SPACER

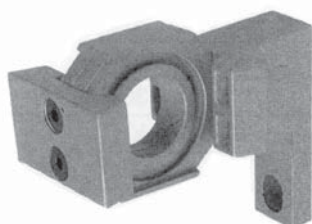


**Y30  
Y40  
Y60**



| MODEL | A  | APPLICABLE MODEL |
|-------|----|------------------|
| Y30   | 11 | AC3000           |
| Y40   | 14 | AC4000           |
| Y60   | 15 | AC5000           |

## SPACER WITH L-TYPE BRACKET

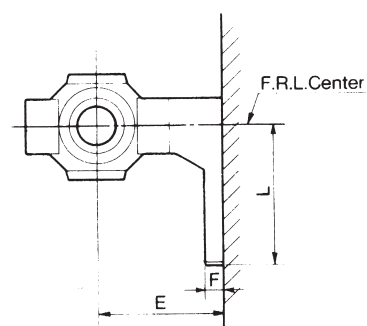
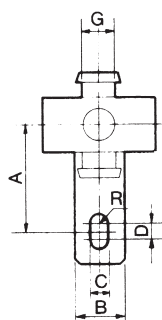


**Y30L  
Y40L  
Y60L**

### L-TYPE BRACKET

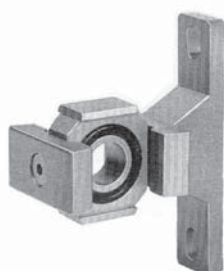


**B310L  
B410L  
B610L**



| L-TYPE BRACKET | SPACER WITH L-TYPE BRACKET | A  | B  | C  | D | E  | F  | G  | R   | L    | APPLICABLE MODEL |
|----------------|----------------------------|----|----|----|---|----|----|----|-----|------|------------------|
| B310L          | Y30L                       | 35 | 16 | 7  | 4 | 41 | 7  | 11 | 3.5 | 45   | AC3000           |
| B410L          | Y40L                       | 40 | 22 | 9  | 4 | 50 | 7  | 14 | 4.5 | 50   | AC4000           |
| B610L          | Y60L                       | 50 | 24 | 12 | 4 | 70 | 10 | 15 | 6   | 62.5 | AC5000           |

## SPACER WITH T-TYPE BRACKET

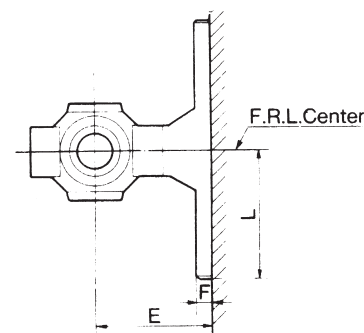
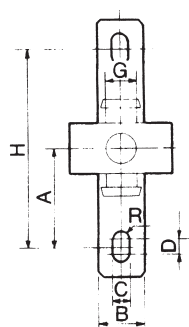


**Y30T  
Y40T  
Y60T**

### T-TYPE BRACKET



**B310T  
B410T  
B610T**

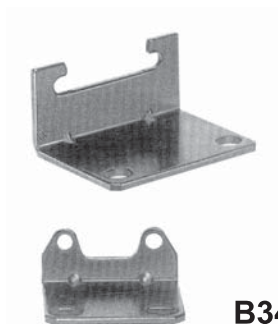


| T-TYPE BRACKET | SPACER WITH T-TYPE BRACKET | A  | B  | C  | D | E  | F  | G  | H   | R   | L    | APPLICABLE MODEL |
|----------------|----------------------------|----|----|----|---|----|----|----|-----|-----|------|------------------|
| B310T          | Y30T                       | 35 | 16 | 7  | 4 | 41 | 7  | 11 | 70  | 3.5 | 45   | AC3010           |
| B410T          | Y40T                       | 40 | 22 | 9  | 4 | 50 | 7  | 14 | 80  | 4.5 | 50   | AC4010           |
| B610T          | Y60T                       | 50 | 24 | 12 | 4 | 70 | 10 | 15 | 100 | 6   | 62.5 | AC5010           |



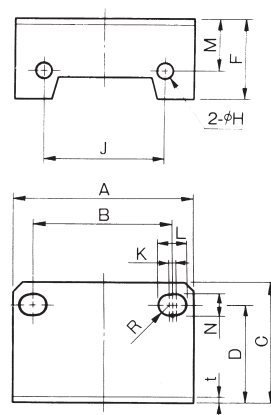
# ACCESSORIES OF AIR COMBINATION SET

## BRACKET FOR AF AL



**B440**

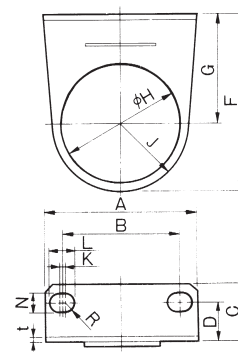
**B340**



## DIMENSIONS (mm)

| MODEL | A  | B  | C  | D  | F    | φH  | J  | K   | L    | M  | N   | R    | t   | MOUNTING SCREW<br>(HEAD CAP SCREW) | APPLICABLE<br>MODEL |
|-------|----|----|----|----|------|-----|----|-----|------|----|-----|------|-----|------------------------------------|---------------------|
| B340  | 53 | 40 | 39 | 32 | 22.5 | 4.5 | 35 | 1.5 | 8    | 19 | 6.5 | 3.25 | 2.3 | M4X8l (Hexagon socket)             | AF3000,AL3000       |
| B440  | 70 | 54 | 47 | 38 | 31.5 | 5.5 | 47 | 2   | 10.5 | 20 | 8.5 | 4.25 | 2.3 | M5X10l (Hexagon socket)            | AF4000,AL4000       |
| B640  | 90 | 66 | 64 | 52 | 43   | 6.5 | 65 | 2   | 13   | 30 | 11  | 5.5  | 3.2 | M6X10l (Hexagon socket)            | AF5000,AL5000       |

## FOR AR AW



## DIMENSIONS (mm)

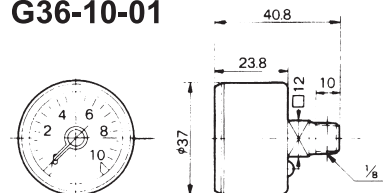
| MODEL | A  | B  | C  | D    | F  | G  | φH   | J  | K   | L    | N   | R    | t   | APPLICABLE MODEL |
|-------|----|----|----|------|----|----|------|----|-----|------|-----|------|-----|------------------|
| B320  | 53 | 40 | 21 | 13.5 | 66 | 41 | 42.5 | 25 | 1.5 | 8    | 6.5 | 3.25 | 2.3 | AR3000,AW3000    |
| B420  | 70 | 54 | 27 | 18   | 80 | 50 | 52.5 | 30 | 2   | 10.5 | 8.5 | 4.25 | 2.3 | AR4000,AW4000    |

## PRESSURE GAUGE

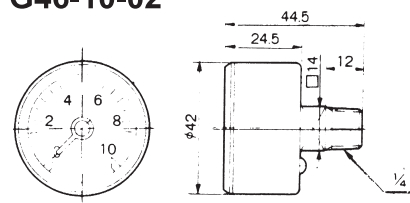
| MODEL     | APPLICABLE MODEL                      |
|-----------|---------------------------------------|
| G36-10-01 | YAR3000 . YAW3000 . YAC3000 . YAC3010 |
| G46-10-02 | YAR4000 . YAW4000 . YAC4000 . YAC4010 |
| G46-10-02 | YAR5000 . YAW5000 . YAC5000 . YAC5010 |



**G36-10-01**



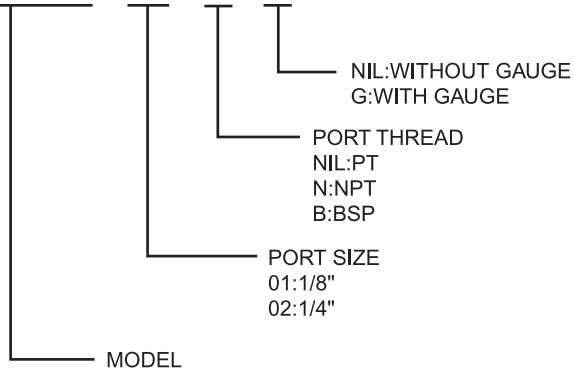
**G46-10-02**



# MINI TYPE F.R.L COMBINATION

## HOW TO ORDER

**YAC2000 - 01 - N - G**



**YAR2000**



**YAW2000**



**YAF2000**



**YAL2000**



**YAC2000**



**YAC2010**

# MINI TYPE F.R.L COMBINATION

| MODEL                | YAC2000                     |      | YAC2010 |      | YAW2000 |      | YAR2000 |      | YAF2000 |      | YAL2000 |      |
|----------------------|-----------------------------|------|---------|------|---------|------|---------|------|---------|------|---------|------|
| Port Size            | 1/8"                        | 1/4" | 1/8"    | 1/4" | 1/8"    | 1/4" | 1/8"    | 1/4" | 1/8"    | 1/4" | 1/8"    | 1/4" |
| Max. Flow l/min.     | 1000                        | 1100 | 1000    | 1100 | 1000    | 1100 | 1000    | 1100 | 1000    | 1100 | 1000    | 1100 |
| Max. Supply pressure | 10.5 kgf/cm <sup>2</sup>    |      |         |      |         |      |         |      |         |      |         |      |
| Adj. Pressure Range  | 0.5-9.9 kgf/cm <sup>2</sup> |      |         |      |         |      |         |      |         |      |         |      |
| Ambient Temperature  | -5~60°C                     |      |         |      |         |      |         |      |         |      |         |      |
| Filtration           | 20 μ                        |      |         |      |         |      |         |      |         |      |         |      |
| Recommended Oil      | ISO VG32                    |      |         |      |         |      |         |      |         |      |         |      |
| Weight kg            | 0.92                        |      | 0.63    |      | 0.44    |      | 0.26    |      | 0.23    |      | 0.26    |      |

## DIMENSIONS (mm)

